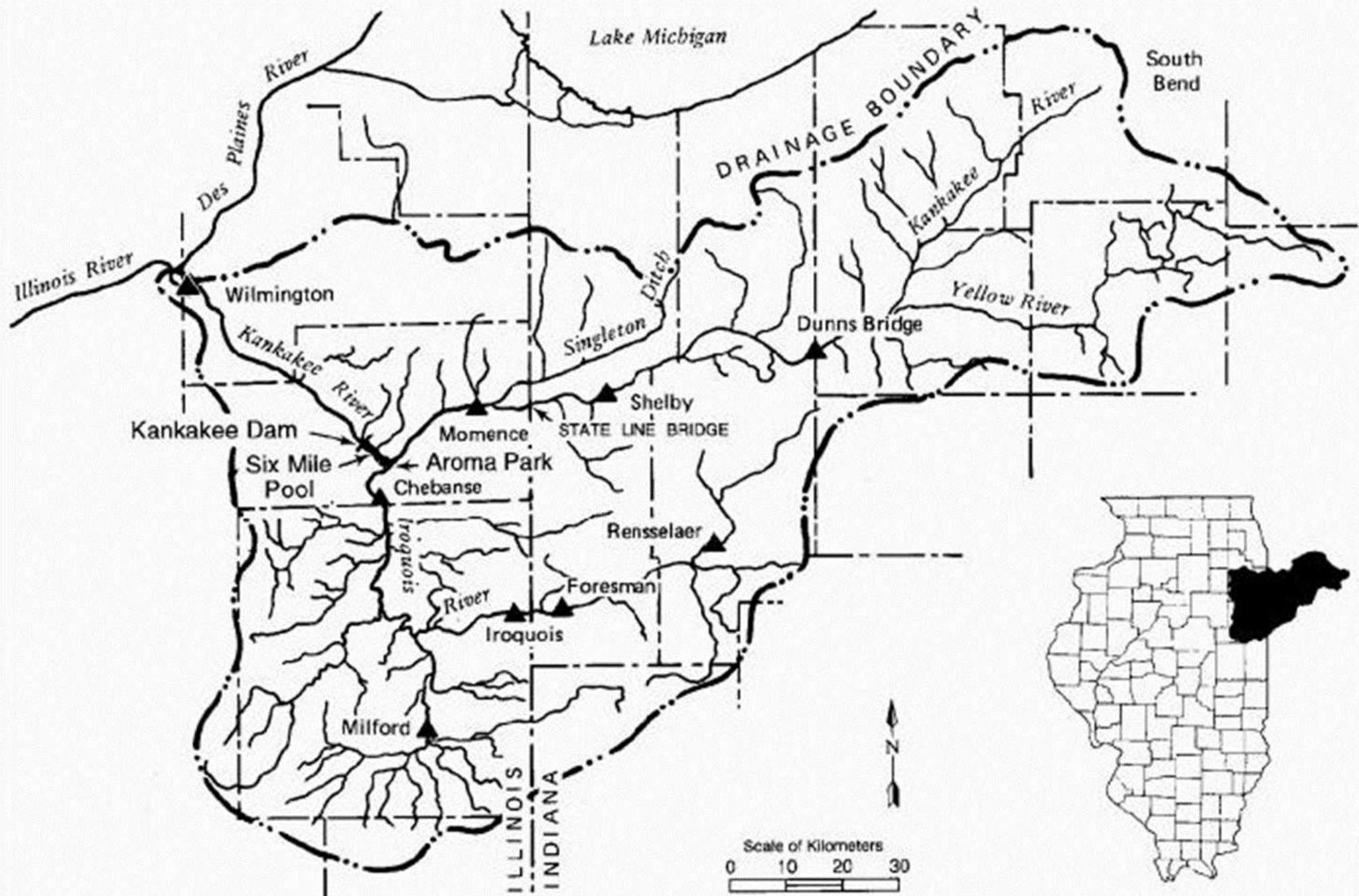
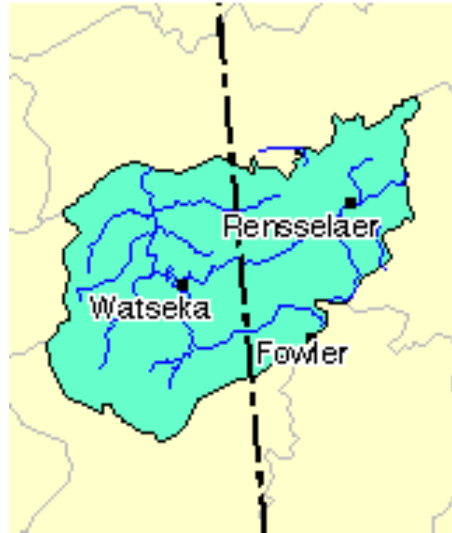


KANKAKEE RIVER BASIN

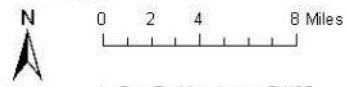
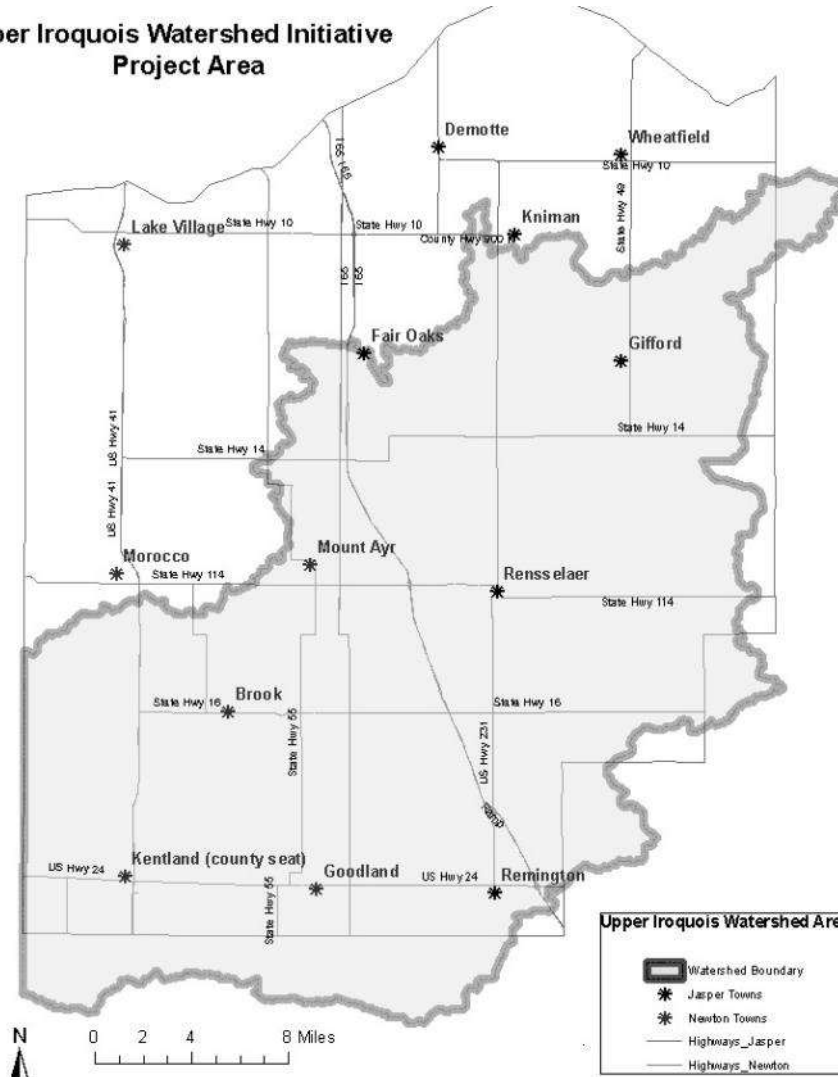


UPPER IROQUOIS WATERSHED INITIATIVE

CONNECTING PEOPLE FOR WATERSHED IMPROVEMENT



Upper Iroquois Watershed Initiative Project Area



by Dan Perkins Jasper SWCD

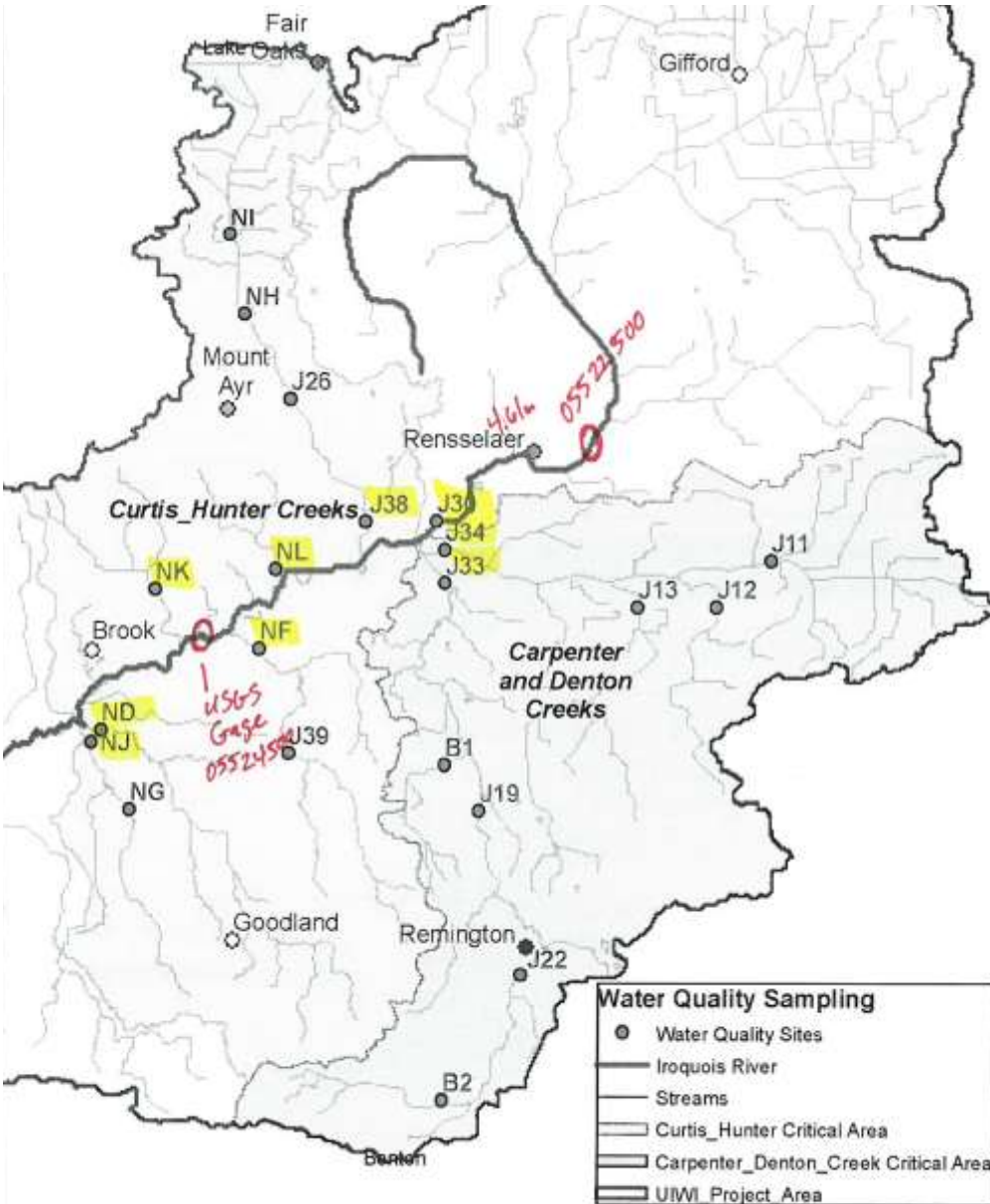
- 651 sq. miles
- 438,332 acres
- 84% Ag land
- 6 % Forested land
- 10 % Other/Urban Land
- 208 miles of streams

Upper Iroquois Watershed Initiative

Utilizing Iroquois River Super Gage with local data.

Integrator of tributary sites

1. 5 years of monthly discrete water quality data.
2. Flow percentage from tributary
 - I. Constituent percentage from tributary
3. Guide watershed efforts.



0 1.25 2.5 5 Miles

by Dan Perkins Jasper SWCD



What can we do about this. . .



- **Nutrient management, no-till, crop rotation and cover crops were implemented as a **SYSTEM!****
- **Annual Nitrate concentrations in tile water dropped from over 30 mg/l to under 10 mg/l**

- *Dr. Eileen Klavivko*
Purdue University
- **Soil loss rates cut by 95%**

How are the farmer's benefiting?

“Produces a bushel of corn on ½ pound of nitrogen”

“Reduced application by half of herbicide”

“10 bushel increase of soybeans after cereal rye cover crop”

“Increased uniform emergence, better soil tilth, nitrogen scavenged”

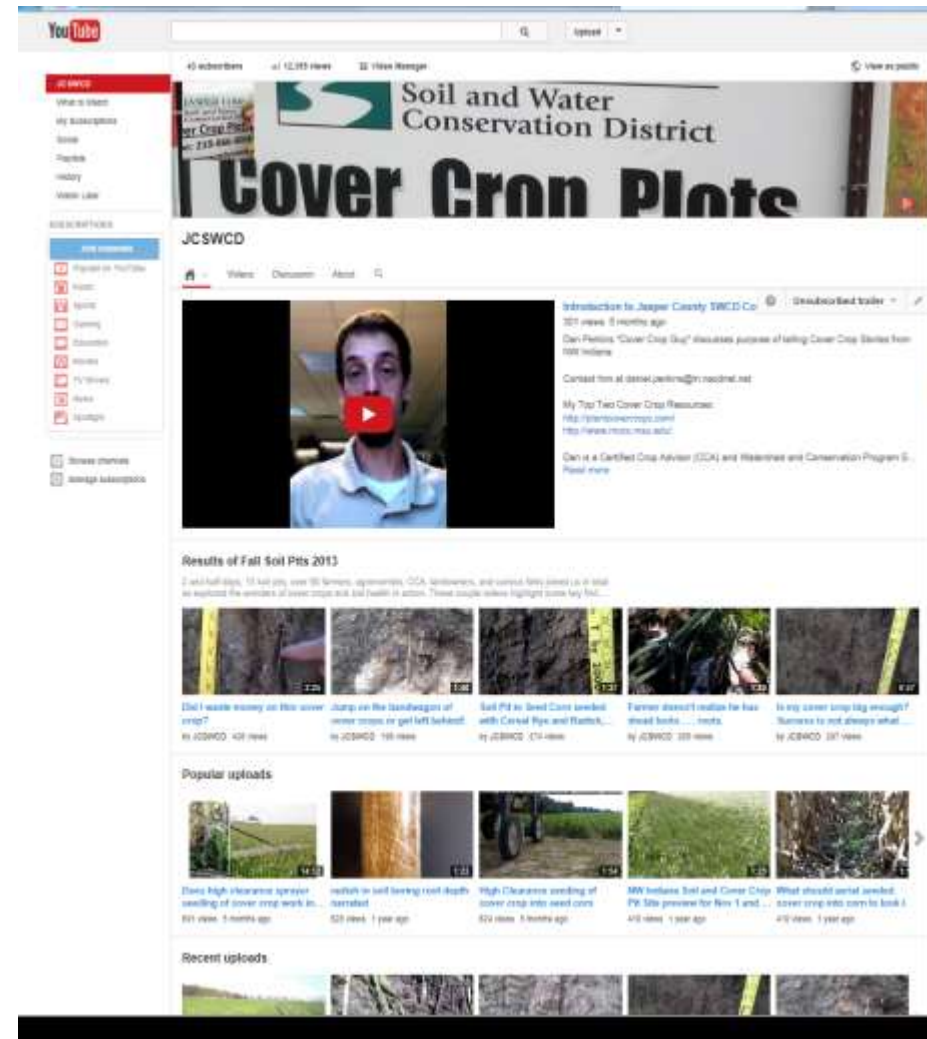
Yet, adoption of cover crops is a growing but small minority. A lot of work has yet to be done . . .

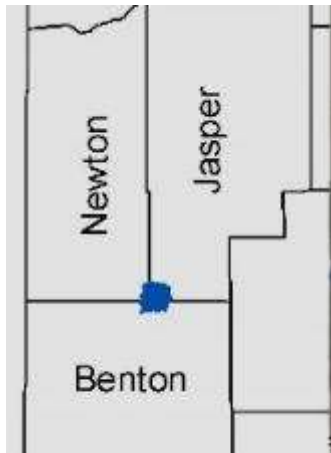


“Cover Crop Guy”

You Tube Channel

- JCSWCD
- 131 total videos in 2016
- 54,483 Views in 2016





Notre Dame Research Project.

2 year complete . . . 40% of watershed in cover crop ..

- 6, 000 Acres Watershed
- 4 year study
- 2x month sampling
- All Tile outlets
- All Surface water

INDIANA WATERSHED INITIATIVE

HOME OVERVIEW TEAM OUTPUTS LATEST NEWS RESOURCES



PREVENTING NUTRIENT LOSS FROM INDIANA FARMS
WITH WATERSHED-SCALE PAIRING OF COVER CROPS
AND THE TWO-STAGE DITCH

www.indianaiwatershedinitiative.com