

Olivet Nazarene University

## Digital Commons @ Olivet

---

President's Dinner Programs

President's Office

---

8-27-2010

### 2010: The President's dinner for Faculty and Staff

Olivet Nazarene University

Follow this and additional works at: [https://digitalcommons.olivet.edu/pres\\_dinn](https://digitalcommons.olivet.edu/pres_dinn)



Part of the [Higher Education Commons](#)

---

#### Recommended Citation

Olivet Nazarene University, "2010: The President's dinner for Faculty and Staff" (2010). *President's Dinner Programs*. 10.

[https://digitalcommons.olivet.edu/pres\\_dinn/10](https://digitalcommons.olivet.edu/pres_dinn/10)

This Booklet is brought to you for free and open access by the President's Office at Digital Commons @ Olivet. It has been accepted for inclusion in President's Dinner Programs by an authorized administrator of Digital Commons @ Olivet. For more information, please contact [digitalcommons@olivet.edu](mailto:digitalcommons@olivet.edu).



# *The President's Dinner For Faculty and Staff*

AUGUST 27, 2010

6:30 P.M.

CHALFANT HALL

OLIVET NAZARENE UNIVERSITY

HOSTED BY DR. AND MRS. JOHN C. BOWLING



# Seeing the Future in 3-D

Oliver Nazarene University | 2010-2011

## OUR MISSION

Olivet Nazarene University, a denominational university in the Wesleyan tradition, exists to provide a university-level liberal arts “Education with a Christian Purpose.”

Our mission is to provide high-quality academic instruction for the purpose of personal development, career and professional readiness, and the preparation of individuals for lives of service to God and humanity.

“We seek the strongest scholarship and the deepest piety, knowing that they are compatible [and] ... a Christian environment ... where not only knowledge but character is sought.” (The quotation is taken from the Olivet *Catalog*, 1915.)

This mission provides the common ground for us as we blend our various gifts and interests together to impact each student. You will have many opportunities this year to live out this mission. Watch for those occasions, for they are moments of great possibility and reward. Through our mission, we transform lives for eternity.

## WELCOME

GOOD EVENING, EVERYONE.

The rhythms and cycles of the University calendar bring us renewal and new opportunities. We now look forward with a strong sense of assurance that “He who began a good work in us” will continue to guide and direct our work during the coming 2010–2011 year.

Let us remember and rejoice that our work is God’s work. We touch eternity every day as we work together to provide an “Education with a Christian Purpose” to a new generation.

Please take a moment during the dinner to review the program, which chronicles many of the fine accomplishments of your colleagues and friends. Others will be recognized for reaching significant milestones of service to Olivet. We also welcome a fine group of new members to the faculty and staff.

We hope you have a wonderful evening, followed by a rich and rewarding new academic year. God bless you!

Sincerely,

Jill and John Bowling

## MENU

### HORS D’OEUVRES

*Garlic and Herb Grilled Pita Wedges  
with Spinach and Artichoke Dip*

### ANTIPASTO PLATE

*Fresh Romaine tossed with Asiago Cheese, Salami,  
Pepperoni, Mild Banana Peppers and Sun-Dried Tomatoes*

### MARINATED SUMMER VEGETABLE SALAD

*Seasoned Asparagus tips mixed in a Citrus Vinaigrette  
with Cherry Tomatoes, Yellow Bell Peppers,  
Baby Carrots and Cucumber*

*Yeast Rolls and Butter*

### ENTRÉE

*Beef Wellington with a Thyme Reduction Demi-Glaze  
Roasted Red Skin Mashed Potatoes  
Green Beans with Red Peppers  
Parmesan Crumb Garlic Roasted Tomatoes*

### DESSERT

*Black Diamond Cheesecake*

*Iced Tea ♦ Coffee*

# THE PRESIDENT’S DINNER

WELCOME .....	DR. DARCEL BRADY Professor, Department of Education
INVOCATION .....	DR. MIKE PYLE Professor, Biological Sciences
RECOGNITION OF SPECIAL GUESTS, NEW FACULTY AND STAFF .....	DR. DARCEL BRADY
DINNER	
DINNER MUSIC — The Don Reddick Trio Eric Penrod, Don Reddick, Brad Zehr	
YEARS OF SERVICE AWARDS AND RECOGNITIONS .....	MR. DAVID PICKERING Director of Business Services
PRESIDENTIAL RECOGNITIONS .....	DR. JOHN C. BOWLING President of the University
Staff Member of the Year Faculty Member of the Year <i>Funded by a gift from V. Aline and Richard H. McHie</i>	
MUSICAL PRESENTATION .....	CONCERT SINGERS DR. NEAL WOODRUFF Director, Concert Singers
ADDRESS: “Seeing the Future ... in 3-D” .....	PRESIDENT BOWLING
ALMA MATER* .....	DR. JEFF BELL, Directing Professor, Department of Music  DR. DON REDDICK, Accompanying Chairman, Department of Music
BENEDICTION .....	DR. MARY MARGARET REED Resident Director, McClain Hall

## \*ALMA MATER, OLIVET

Byron M. Carmony '39

To Alma Mater, Olivet, We lift our voice in praise  
For noble standards which we'll hold  
'til ending of our days.

The time we spent within these halls will ne'er  
forgotten be,  
For here we learned to know of truth,  
and truth will make us free.

My Olivet, Our Olivet! Tho' life may lead us  
far apart,  
I'll still revere you in my heart.

My Olivet, Our Olivet. I'll love the Christ  
you gave first part,  
And you, old Olivet!

# 2010 FACULTY MEMBER OF THE YEAR

## Don Daake

*Business Professor, Director of Weber Leadership Center*



Olivet Nazarene University was not a long-term plan for Don Daake. After completing his Ph.D. at Florida State University, he knew he wanted to teach at a Christian school ... for a couple of years. But 15 years later, Don is still glad to be here.

"I just wanted to give it a try. We thought for sure it would be two or three years; we really didn't have any definite plans," he remembers. "But Olivet has been good to me and things worked out. ... And I'm still here!"

After beginning his career in market research, Don moved to the administrative side of education, developing training programs for companies and organizations. While earning his Ph.D., he learned he enjoyed the opportunity to work with students.

Today, that chance to influence the next generation is just as exciting.

"What I really like about teaching at Olivet is that you get to see freshmen come in and you watch them progress all the way up to becoming seniors. You watch them mature, and you have an influence," he says. "Teaching is about the investment you make in students' lives, and it's a very rewarding thing to do."

In addition to his role as a professor, Don became the first director of the Weber Leadership Center in 2001. Under his guidance, the Center has strengthened ties to Olivet's surrounding area. With special guest speakers, seminars and workshops, the Leadership Center has become a valuable resource to students and community members alike.

"So much of what the Leadership Center does is community involvement," he explains. "So much of what we envision it being is a place to help us make connections to the community and to help the community make connections to our students."

Back in the classroom, Don has one lesson he hopes his students learn and practice in the business world: Commit yourself to being excellent as an expression of your Christianity. "When you go out into the world as a Christian, people expect more from you," he explains. "To be salt and light, you have to be as good as you can possibly be."

Don, himself, has shown that commitment to excellence. He has previously served on the Kankakee River Valley and Bradley-Bourbonnais chamber boards and regularly makes presentations to community groups. He also currently coauthors a business column for The Daily Journal.

Whether serving in the community or the classroom, he sees his life as a true testament to his parents' faithfulness. "They were people of strong values and faith," he says. "They lived a life that, later in my own life, I've tried to emulate."

Don and his wife, Barbara, a 1974 graduate of Olivet, attend College Church of the Nazarene. They have one daughter, Michelle.

Don, for your diligent efforts to connect Olivet with the surrounding community and for your dedication to excellence in all you do, we salute you as the 2010 Faculty Member of the Year.



# 2010 STAFF MEMBER OF THE YEAR

## Donnie Johnson

*Director of Graphic Design*



**H**ad you met Donnie Johnson while he was growing up, you might have guessed he would find a career in the creative arts. With an interest in drawing and photography, filling up sketch pads and developing rolls of 35 mm film were a regular part of his youth. By high school, he began to think long term.

"Working on the yearbook staff in high school was when I started to realize how I could pull those creative interests together in a finished layout," he remembers. "It was a feeling of satisfaction to hold that first yearbook I had helped design and photograph. The reward of creating a hardcover book that could last a lifetime seemed like a great way to make a living."

Two years after graduating from the University of Illinois at Urbana-Champaign, Donnie took a job as a graphic designer at G&G Studios/Broadway Printing in Bradley. There, he began to work with Gordon Wickersham, who was Olivet's director of public relations at the time, on projects for the University.

The relationship with Olivet continued to develop and he eventually learned of a graphic design position at the University. He expressed his interest and was offered the job in 1996.

Now serving as director of graphic design, Donnie oversees the production of marketing and informational pieces for the University. In his work, he seeks to create compelling, relevant and readable designs that capture the spirit and character of the institution.

Whether designing pieces to be used on campus or to be sent out to prospective students or alumni, his work is often what sparks an interest in Olivet from those outside of the University.

"I've always prided myself on playing a supporting role, a behind-the-scenes role, with the goal of telling the University's story in an interesting way," he says. "I've done my job well if the face of Olivet shines through and mine is transparent."

While the job often means tight deadlines and late nights, the finished projects are worth the extra effort. In fact, the most challenging pieces are frequently the most rewarding ones.

"The Olivetian continues to be my most rewarding project," he says. "Creating consistency from issue to issue yet reinventing the layout from page to page is always a challenge."

As he continues to create the look of Olivet, Donnie is grateful to be where he is, surrounded by people working for a higher purpose. "I enjoy the people I work with and the people I serve," he says. "It is a privilege and a blessing to be a part of Olivet, to have the opportunity to contribute to something bigger than myself."

Donnie and his wife, Tammy, are long-time residents of Bourbonnais. Their son, Logan, will be a sophomore at Olivet this fall.

Donnie, for your incredible commitment to your craft and for helping others see the Olivet story, we salute you as the 2010 Staff Member of the Year.



# NEW FACULTY FOR 2010–2011

**Nicole Enzinger**

*Assistant Professor,  
Department of Mathematics*  
B.S., 2005, Olivet Nazarene University  
M.A., 2009, DePaul University

**Rachel Guimond**

*Assistant Professor,  
Department of Social Work  
and Criminal Justice*  
B.A., 2002, Point Loma Nazarene University  
M.A., 2004, University of Chicago

**Sandra Horton**

*Assistant Professor,  
School of Graduate and  
Continuing Studies*  
B.S., 1987, Olivet Nazarene University  
M.S.N., 1999, University of Phoenix

**Patricia Krohmer**

*Associate Professor,  
School of Graduate and  
Continuing Studies*  
B.A., 1975, Fontbonne University  
M.B.A., 2004, Saint Xavier University  
Ph.D. Candidate, Capella University

**Joseph Makarewicz**

(One-year appointment)  
*Department of Engineering*  
B.S., 2007, Olivet Nazarene University  
M.S., 2009, University of Kansas

**Jason Robertson**

*Assistant Professor,  
School of Theology and  
Christian Ministry*  
B.A., 1999, Mount Vernon Nazarene University  
M.A. Candidate, George Fox Evangelical  
Seminary

**Kari Sandouka**

(One-year appointment)  
*Department of Computer Science*  
B.S., 2004, Olivet Nazarene University  
M.A., 2007, Webster University

**Jeffrey Williamson**

*Associate Professor/Dean,  
School of Graduate and  
Continuing Studies*  
B.A., 1984, Olivet Nazarene University  
M.A., 1987, Ball State University  
Ed.D., 2002, University of Sarasota

# NEW ATHLETIC STAFF FOR 2010–2011

**Javaris “Deon” Bates**  
*Football*

**Torrance Gaumer**  
*Track & Field*

# NEW STAFF

## FOR 2010-2011

**Bradley Arthur**

*Office of Admissions*

**Timothy Ascher**

*Physical Plant*

**Darren Blair**

*Department of Public Safety*

**Katherine Burkey**

*School of Graduate and  
Continuing Studies*

**Lincoln Butler**

*Office of Student Development*

**Robyn Callwood**

*School of Graduate and  
Continuing Studies*

**Nicole Carroll**

*School of Graduate and  
Continuing Studies*

**Joseph Cash**

*Office of Admissions*

**Teresa Choate**

*School of Graduate and  
Continuing Studies*

**Spencer Cook**

*Office of Student Development*

**Brandon Davey**

*Office of Student Development*

**Brandon Doty**

*School of Graduate and  
Continuing Studies*

**Joseph Ekhoﬀ**

*Physical Plant*

**Elizabeth Eschker**

*School of Graduate and  
Continuing Studies*

**J. Jesus Garcia**

*Physical Plant*

**Chelsie Geasa**

*School of Graduate and  
Continuing Studies*

**Andrew Guenette**

*Physical Plant*

**Joy Guffey**

*Office of Student Development*

**Morgan Haley**

*Office of Admissions*

**Charles Heller**

*Department of Public Safety*

**Douglas Hewett**

*Information Technology*

**Sarah Hobbs**

*Information Technology*

**Dustin Hogan**

*Office of Student Development*

**Callie Ivey**

*Office of Student Development*

**Kenneth Jones**

*Department of Public Safety*

**Sarah Kirkland**

*Benner Library*

**Jennifer Lalumendre**

*Office of Financial Aid*

**Andrew Langlois**

*Physical Plant*

**Cynthia Laughlin**

*Physical Plant*

**Kristen Lewis**

*Switchboard/Shine.fm*

**Troy Lovell**

*Physical Plant*

**Deborah Marshall**

*Physical Plant*

**Justin Marshall**

*Department of Public Safety*

**Stacey May**

*School of Graduate and  
Continuing Studies*

**Nathan Merki**

*Office of Advancement Services*

**Sara Miller**

*Office of Financial Aid*

**Lynn Nogoda**

*Physical Plant*

**Amy Nuxoll**

*Information Technology*

**Adam Ollervidez**

*Information Technology*

**Matthew Ostrom**

*Office of Financial Aid*

**Crystal Pribyl**

*Department of Public Safety*

**Donald Rantz**

*Physical Plant*

**Joseph Rojek**

*School of Graduate and  
Continuing Studies*

**Ryan Schultz**

*Department of Music*

**Mary Schweigert**

*Office of Counseling and  
Health Services*

**Megan Sherman**

*Office of Admissions*

**Matthew Slimmer**

*Information Technology*

**Megan Sterk**

*Military Sciences/ROTC*

**Philip Steward**

*Office of Student Development*

**Linda Stone**

*Office of Counseling and  
Health Services*

**Judson Strain**

*Benner Library*

**Malgorzata Szczech**

*Physical Plant*

**Mary Trimby**

*Department of  
Communications*

**Amanda Upshaw**

*Department of Music*

**Susan Vickers**

*School of Graduate and  
Continuing Studies*

**Joseph Weber**

*School of Graduate and  
Continuing Studies*

**Corrie Wessman**

*School of Graduate and  
Continuing Studies*

**Paul "Ben" White**

*Information Technology*

**Caleb Williams**

*Department of Public Safety*

# STAFF AND ADMINISTRATIVE FACULTY RECOGNITIONS FOR 2009–10

**Mary Anderson**

Elected 2010–11 president of the Illinois Small College Placement Association, a consortium of career professionals from 25 Illinois colleges and universities. Mary is a charter member of the Association, founded in 1988.

**Bradley Arthur**

Received district minister's license in the Church of the Nazarene from the Indianapolis District

**Dianne Dawson-Daniels**

Earned the designation of registered leadership coach from the Institute for Life Coach Training

**Tony Grimm**

Served as eligibility chairperson for Chicagoland Collegiate Athletic Conference (CCAC)

**C. William Heller**

Licensed EMT

**Craig Manes**

Volunteered and taught a Christian doctrine class at extension site of European Nazarene College in Lisbon, Portugal, from June 19–30, 2010, for students from Portugal and France who were being trained for ministry

**Bethany Mills**

Earned certification in Biblical Counseling for the Treatment of Sexual Addictions

Facilitated four sessions on parenting for Chicago Heights Church of the Nazarene "Family Matters" series

Completed external review of ONU's Counseling Services

Provided on-site consultation and counseling services for General Church of the Nazarene Pastors and Leaders Conference (PALCON) at Olivet and Mount Vernon Nazarene University

Working on research project analyzing communication patterns of students and technology

Two presentations at professional 5C Forum, "Mandated Counseling: Does it Work?" and "Online Social Networking and Campus Connectedness"

Co-presented "The Whole Story: A Holistic Approach to Student Development" at the Association of Christians in Student Development at Messiah College, Grantham, Pa.

**Dwayne Mills**

Presented with Bethany Mills and Craig Bishop at the Association of Christians in Student Development Annual Conference in June. Topic: "The Whole Story: A Holistic Approach to Collaboration in Action."

Served as Regional Nazarene Youth International (NYI) president for the Central USA Region

**Jordan Prewitt**

Licensed EMT

**Carol Reams**

Volunteer chaplain at Riverside Medical Center Retirement Facilities

**Jason Savage**

Licensed EMT

**Dianne Schaafsma**

Momence CUSD #1, Board President, Finance Committee

Kankakee Special Education Co-op, Board Member representing Momence

Hospice of Kankakee Valley, Treasurer and member of Finance and Executive Committees

Kappa Delta Sorority at Illinois Wesleyan, Treasurer and member of House Corporation

Provena St. Mary's Business and Finance Committee

Provena St. Mary's Foundation Investment Committee

**Carol Foor Watson**

Short story, "Even the Youngest," *Standard*, August 8, 2010, published by WORDACTION, a division of Nazarene Publishing Houses

Articles: "More Than Babysitting," *Holiness Today*, January/February 2010, published by Nazarene Publishing; "Planting Seeds for Jesus," *Online Holiness Today*, June 2, 2010, published by Nazarene Publishing House

# FACULTY RECOGNITIONS

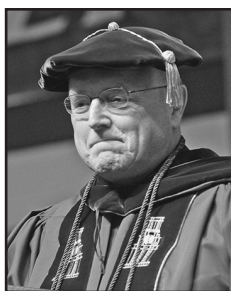
## FOR 2009-10

### I. PROFILES OF 2010 TEACHING AND SCHOLARSHIP AWARDS

#### **Stanton Tuttle**

##### *2010 Richard M. Jones Faculty Award for Teaching Excellence*

An anonymous author once wrote, “The best teachers teach from the heart, not from the book.” I have found this sentence to be very appropriate as I have grown in teaching. I have sought to grow in the content necessary to be effective, and also grow in establishing and maintaining relationships with students and fellow professors.



**TUTTLE**

The theme of Olivet’s Teacher Education program is “Professionals Influencing Lives.” Growth in teaching is being able to embrace this theme, both inside and outside the classroom. As a professor in this program at Olivet, I strive to grow daily, supporting this theme, in everything that I do, inside and outside the classroom.

As another anonymous author stated, “Teachers who influence realize there will always be rocks in the road ahead of us. They will be stumbling blocks or stepping stones; it all depends on how we use them.” One of my goals is to empower my students to see both the stumbling blocks and the stepping stones, so they can discern their own path, and make this path as smooth as possible.

As I grow as a teacher, I also try to remember the words of Karl Menninger, who said, “What the teacher is, is more important than what he teaches.” Each day, I try to be the model for what a professional who influences lives should be for those around me.

#### **Rebecca Belcher-Rankin**

##### *2010 Samuel L. Mayhugh Award for Scholarly Excellence*

I am engaged in scholarship projects to keep abreast of the new research in my discipline, to model for my students that research in the discipline matters, and to demonstrate to the administration that I am keeping fresh and up-to-date in my field. All of these are reasons that the pursuit of scholarship is important to me, but none of them express the most personal reason that scholarship is important to me: It makes me feel alive.

I am one of those professors who are perennial students. I’m always looking for the next bit of new knowledge. That search is one of the reasons I keep abreast of the new research in my discipline. Reading articles or listening to other professionals at conferences feeds that hunger for new knowledge. Hearing the new knowledge is never sufficient: I always want to share it with my students because it is too good to keep to myself.

Sharing new knowledge or new insights with my students, however, is never enough. I want to write my own articles with the new knowledge and insights in mind, because I discover even more insights and make new connections as I write. And such discoveries enliven the mind, enrich the soul, keep me alive.



**BELCHER-RANKIN**

## II. ACADEMIC EXCELLENCE AT OLIVET NAZARENE UNIVERSITY

Olivet's greatest resources are its people. Excellent faculty and staff members, working with motivated students, produce outstanding alumni. ONU alumni live in 60 world areas and accomplish much. They have: founded Ticketmaster, sung with Pavarotti on Broadway, written software for the CAT-scan, edited *U.S. News & World Report*, directed IRS field operations, led policy teams for the Department of Homeland Security, operated on Nancy Reagan, controlled product logistics for Kraft Foods, managed chemistry research for Proctor & Gamble, presided over Sears & Roebuck, supervised databases for the Space Shuttle Program, performed economic diplomacy for the U.S. government in Moscow, consulted Fortune 500 CEOs, sold the largest deal in AT&T history, regulated finances for the U.S. Departments of Defense and Agriculture, won national photography and art competitions, held public office, and, among others, superintended the Church of the Nazarene.

Alumni have completed graduate degrees at the Naval Aerospace Institute at Harvard University, Boston University, Wharton Business School at Penn, law degrees at Stanford, Notre Dame, and Ohio State, and medical programs at the University of Illinois, University of Chicago, University of Michigan, Wayne State University, Loyola, and more.

ONU students recently performed successfully on standardized industry and licensure exams, with pass rates such as:

- 100% on the state Fundamentals of Engineering test (national rate is 80%)
- 100% on the National Association of State Boards of Geology exam (national rate is 57%)
- 99% on the composite Teacher Education licensure test
- 97% on State of Illinois Nursing state boards (87% is state average)
- 93% on medical school acceptance (46% is national average)
- 66% on the first-year actuarial science test (30% pass rate nationally)

And compared to a large pool of students enrolled at other institutions of the Council of Christian Colleges and Universities, ONU students do significantly more:

- community volunteerism
- team-based coursework outside of class
- foreign language preparation and international service (e.g., Mission in Action or study abroad participation)
- faith-integration (i.e., applying Christian values to profession; discussing personal beliefs). Eighty-nine percent say their religious beliefs are strengthened by the completion of their first year (compared with 53% at other religiously affiliated schools).

## III. EXAMPLES OF GUEST LECTURERS TO CAMPUS 2009–2010

**Jeremie Kubicek**, President and CEO of GIANT Impact and Co-Founder of Giant

**John Blumberg**, Certified Speaking Professional and Author

**Haydn Shaw**, Speaker for FranklinCovey workshops

**Lamont Moon**, President, Courageous Leadership

**Diane Smith**, Owner, Irongate Fine Homes

**Shawn Spencer**, CEO, Blue Ocean Advisors, Underwriters Group

**Ryan Dobson**, Speaker and Author

**Bill and Pam Farrel**, Marriage Conference speakers and authors

**Stephen Butler**, CFO, Food and Nutrition Service Bureau, US Dept. of Agriculture

**Alison Morrison-Shetler**, Vice Provost, Dean of Undergraduate Studies, University of Central Florida

**Hugo Chan**, Attorney at Liao, Ho & Chan, Hong Kong, China

**Jay Stewart**, Special Counsel to Illinois Governor Pat Quinn

**Dr. Leland Ryken**, Professor of English, Wheaton College

**Dr. Robert Brabenec**, past Chair, Department of Mathematics, Wheaton College

**Dr. Kent Hill**, Vice President of Character Formation, John Templeton Foundation

**Dr. Owen Astrachan**, Professor of the Practice of Computer Science, Duke University

**Jim Leamer**, Wycliffe Bible Translators

**Dr. Juanita Sharpe**, Associate Professor, Department of Biological Sciences, Chicago State University

**Dr. Lee Sunderlin**, Associate Professor, Department of Chemistry and Biochemistry, Northern Illinois University

**Kristopher Kelley**, Founder/CEO, Kelley Green Biofuel

**Dr. Stephen McKenna**, Research Chemist, INEOS Technologies

**Dr. Eric Johnson**, ONU Alumnus, Principal Scientist, Proctor and Gamble

**Andrew Loftin**, ONU Alumnus, Quality Control Analyst, CSL Behring LLC

**Dr. Jeffrey Turk**, Assistant Professor of Chemistry, Alma College

**Dr. Boris Nemzer**, FutureCeuticals, Mommence, Ill.



## IV. SCHOLARSHIP PROJECTS

**T**he next section recognizes sample scholarship projects by ONU faculty members during the past year. (Administrative faculty, department heads, and coaches are not required to perform such work, though many do so. Also, doctoral projects count as the scholarship agenda for faculty engaged in that work). The University congratulates faculty members on this work! When done well, these projects intensify the effectiveness of the gospel.

Scholarship projects fulfill part of the ONU mission. As a denominational university in the Wesleyan tradition, the “strongest scholarship and deepest piety” are thoroughly compatible (Catalog 1915). Faculty members serve that great cause through spiritual modeling, course instruction, service roles (e.g., committees, student advising, etc.), and when maintaining an agenda for professional growth. The two most common forms of professional growth among faculty members include: (a) professional practice experiences (i.e., activities to stay current in one’s field, like reading, updating coursework, attending conferences, practicing the skills of the field), and (b) scholarship projects (i.e., learning projects, put in public form — a presentation, artifact, publication, DVD, CD, etc. — then evaluated by those credentialed to judge its quality).

*Scholarship projects are important to ONU for a variety of reasons:*

**Scholarship projects are teacher-friendly.** As a teaching university, we believe scholarship projects inform instruction. Teaching and scholarship are not mutually exclusive, but interdependent. Students receive with confidence the methods, techniques and ideas current scholarship affords.

**Scholarship projects are integrated.** As a Christian university, we believe faculty members should illustrate and articulate the impact of The Faith on our work. While secular faculty exhibit virtuous behaviors (e.g. respect, kindness), we focus on faith-cultivating behaviors. This influences syllabi, instructional content, assessment procedures, out-of-classroom initiatives, and more.

**Scholarship projects are a proportionate priority.** As stewards of time, a call for scholarship projects is not a call to add workload, but reconfigure it around our identity as a Christian, teaching-focused institution. ONU faculty work is typically comprised of 60%–70% in teaching-related activities, 10%–20% in university service roles (committees, advising, admissions, etc.), and 10%–20% dedicated to a scholarship project. This “tithe of time” in scholarship sharpens the saw, hones understanding, and improves the academic field.

**Scholarship projects are diverse.** Quality and format standards for scholarship projects vary widely between and within academic fields. A scholar is not limited to publishing, but participates in any combination of five scholarship domains: faith integration, teaching and learning, application, interdisciplinary integration, or discovery. Flexibility in scholarship domains recognizes legitimate differences between disciplines and reflects the breadth of university life.

**Scholarship projects are dynamic.** Individual interests widen and deepen fluidly over time. One may wish to focus on one domain of scholarship during an early phase in their career, then change focus later. Trials in new areas ensure students receive multiple dimensions to their education.

**Scholarship projects are rewarded.** While all faculty members perform similar kinds of work, particularly ambitious or effective scholars are recognized in a variety of ways: promotion in faculty rank, multi-year contracts, course releases, scholarship grants within the College/Schools, and an annual scholarship award alongside the annual teaching award.



## V. RECENT SCHOLARSHIP GRANT RECIPIENTS

**W**hile all faculty members engage in scholarship projects, some are particularly ambitious and available for supplemental support. The following were awarded grants by unit deans for the coming year:

### COLLEGE OF ARTS AND SCIENCES

**CHARLES CARRIGAN** | Research: "From Microscopic Minerals to Massive Mountains: Deciphering the history of the southern Appalachians through a study of the accessory mineral rutile." Plans are to present results at the annual Geological Society of America meeting.

**STEPHEN CASE** | Creation of a new planetarium show: "Planetarium Show Equipment and Production."

**REBECCA BELCHER-RANKIN** | Working on writing a book for publication: *The Diminished Life: A Memoir*.

**WILLA HARPER** | Research on "Studies of Molecules Related to Vision Loss" — a study of macular degeneration.

**MAX REAMS** | Field data for a book, *Geology of Illinois State Parks*.

**KRISTIAN VEIT** | Research: "Investigating the relationship between affect intensity and physiological responding" — a study of how people respond to stressful situations.

**KRISTY INGRAM, BETH OLNEY, SUE RATTIN, SUE WILLIAMS** | Research and data collection for an ONU Writing Center

and implementation of a pilot program.

### SCHOOL OF PROFESSIONAL STUDIES

**LARRY VAIL, CATHERINE BAREISS** | Study by the Department of Computer Science on effective ways to get faculty from other departments to discover and explore how technology has impacted their disciplines: "Faculty Engagement in the study of technological change on the discipline"

**JAN HOCKENSMITH** | "Community Based Service for the Aging" — research of a program introduced in Birmingham, England in 2006 called 'Direct Payment' which allows individuals 16 years of age and over who have a disability, and the aging, to select or buy services they have been assessed as needing.

### SCHOOL OF THEOLOGY AND CHRISTIAN MINISTRY

**LEON BLANCHETTE** | Working on publications in Christian Education — Spiritual Development of Children.

**EDDIE ELLIS** | Research project into ancient conception of addiction and implications for biblical studies.

**KEVIN LOWERY** | Working to complete "Religion Within the Boundaries of Morality and Reason" for submission to publisher.

**KEVIN MELLISH** | Working on Commentary in I & II Samuel for New Beacon Bible Commentary; Working on revision and publication of doctoral dissertation.

## VI. SCHOLARSHIP PROJECTS COMPLETED OR IN PROGRESS

### SCHOOL OF PROFESSIONAL STUDIES

**LYNDA ALLEN** | (*In progress*): Integration of service learning into the business curriculum and capstone leadership course.

**ROBERT ALLEN** | (*In progress*): Develop senior Baja projects in conjunction with other universities.

**CATHERINE ANSTROM** | (*In progress*): Doctoral studies, Capella University.

**CATHERINE BAREISS** | (*In progress*): NSF CCLI grant for \$196,000 to study "Computing Foundations for the Scientist."

**MARK BISHOP** | (*In progress*): A comprehensive literature review of changes within higher education mass communication curriculum and its influence of the ever-changing convergence of media.

**GREGG CHENOWETH** | (*Completed*): "Theocracy: Christian Universities and Muslim Students," *Forum on Public Policy*, January 2010 edition, <http://forumonpublicpolicy.com/summer09>; "Making it in the Mid-Years," *Holiness Today*, November 2009, pp. 22–23; "A Peek Behind the Veil," *Inside Higher Ed*, August 21, 2009; Presented at Oxford Round Table, the University of Oxford, "Theocracy: Theological and Democratic Opportunities with Muslim Students at U.S. Evangelical

CONTINUED >

# VI. RECENT SCHOLARSHIP PROJECTS COMPLETED OR IN PROGRESS — CONTINUED

Christian Universities,”  
London, England, July 2009;  
Session chairman, “Academic  
Planning: Keeping the Vision  
Moving Forward,” Council of  
Independent Colleges Institute  
for Chief Academic Officers,  
Santa Fe, N.M., November 2009.

(*In progress*): Project editor for a  
book on what a Nazarene higher  
education is for, involving 45 fac-  
ulty members from six countries.

**JERRY COHAGAN** | (*In progress*):  
The study of the Sanford Meisner  
approach toward teaching acting,  
leading toward certification  
in Meisner technique. To be  
implemented into acting courses  
and rehearsal process toward  
production.

**DON DAAKE** | (*Completed*):  
52 weekly articles published in  
*The Daily Journal* co-authored  
with Mr. Ed Piatt. Topics  
included ethics, company  
culture, creativity, emotional  
intelligence, decision making  
and management best practices;  
Paper presented at national  
CBFA conference in Rodgers,  
Ark., October 2009, “Teaching  
the Capstone Strategy Course:  
Innovative Techniques to Teach  
with Greater Relevancy in a  
Hyper-changing, Post-‘Melt  
Down’ World”; Professional  
presentation of “Ethics and  
Credibility” presented to the  
following groups: Bradley  
Bourbonnais Chamber of Com-  
merce Leadership Development  
Institute, Joliet Zonta Club,  
Kankakee Area of Society of  
Human Resources Managers,  
Kankakee Rotary Club, and  
Kankakee Kiwanis Club; Pre-  
sented to SCORE District Meet-  
ing (State Meeting) April 2010,  
“Educating the Next Generation  
of Business Leaders and Being  
Educated by Them!”

(*In progress*): Continue article in  
*The Daily Journal* and presenta-  
tions to local business groups.

(*Professional Leadership*):  
On editorial review Board for  
CBFA’s CBAR & JBIB Journals;  
Vice President Kankakee Area  
SCORE Chapter; Ad Hoc reviewer  
for Journal of Managerial Issues;  
Member of three-person Ethics  
Commission for Kankakee County  
and Kankakee Economic Alliance  
and Special Jobs Committee;  
Seven Years as Facilitator for  
Kankakee Area Community  
Advisory Board (Dow/R & H &  
Cognis Corporation) and newly  
appointed to be CAP facilitator  
for DOW Wilmington, January  
2010; Newly appointed to Board  
of Directors for Kankakee YMCA;  
Strategic planning and market  
research consultant to Kankakee  
Valley Symphony Orchestra;  
Moderated Kankakee Chamber  
of Commerce Town Hall meeting  
featuring national speakers such  
as Fox’s William Kristol and Farm  
Bureau’s Legislative Forum.

**LINDA DAVISON** | (*In progress*):  
Develop nursing research courses  
for nursing programs.

**SUSAN DAY** | (*In progress*): Research  
on virtual learning environments  
and development of Mission in  
Action projects in Argentina with  
Mike Morgan and Rosalie Tuttle.

**PAUL DILLINGER** | (*In progress*):  
Research on psychotropic  
medication instructional strategies.

**SUSAN DRAINE** | (*In progress*):  
Grant writing for nursing projects.

**CARL FLETCHER** | (*In progress*):  
Comprehensive literature review  
of changes within higher education  
mass communication curriculum  
and its influence of the ever-  
changing convergence of media.

**HEATHER GIBBS** | (*Completed*):  
Gibbs, H.D., Chapman-  
Novakofski, K.M. (2009). Attention  
to health literacy among nutrition  
educators [Abstract]. *Journal of  
the American Dietetic Association*,  
109 (9, Supplement): A22. Poster

Session for above abstract:  
“Attention to Health Literacy  
Among Nutrition Educators.”  
October 2009. Food & Nutrition  
Conference and Expo of the  
American Dietetic Association.

(*In progress*): Doctoral studies,  
University of Illinois.

**RALPH GOODWIN** | (*In progress*):  
Research and paper on faith  
integration in finance or  
accounting; ebook and Web links  
for principles of finance.

**LINDA GREENSTREET** |  
(*In progress*): Develop patient  
safety projects for nursing  
classes.

**TIFFANY GREER** | (*In progress*):  
Doctoral studies, Capella  
University.

**JAN HOCKENSMITH** | (*In progress*):  
Research grant on “Community-  
Based Services for the Aging.”

**PATRICIA KERSHAW** |  
(*In progress*): Doctoral Studies,  
Governors State University.

**PAUL KOCH** | (*Completed*):  
A presentation titled, “The Use  
of Biblical/Christian Metaphors  
in the Teaching of Economics,”  
as a part of the ONU Faculty  
Scholarship Symposium on  
April 10, 2010.

(*In progress*): A review of  
*Engaging Economics: New  
Testament Scenarios and Early  
Christian Reception*, edited by  
Bruce Longenecker and Kelly  
Liebengood, to be published  
in the Fall 2010 edition of the  
*Journal of Markets and Morality*.

**EMILY LAMB NORMAND** |  
(*In progress*): Publish Ph.D.  
dissertation in separate research  
articles for conference and  
publication submission.

**BARRY LEE** | (*In progress*):  
Doctoral studies, Adler School of  
Professional Psychology.

**PAMELA LEE** | (*In progress*): Research project on ACTS OF FAITH — health care needs of congregations — with researchers at the University of Chicago.

(*Professional Leadership*): Development of continuing education workshops for RNs in conjunction with Tinley Park Convention Center.

**IVOR NEWSHAM** | (*Professional Leadership*): Team chair of two comprehensive Higher Learning Commission visits: Maharishi University of Management, Fairfield, Iowa, and their international program in Beijing, China, October 2009; and Ohio Christian University, Circleville, Ohio, March 2010.

**PATRICIA NIELSEN** | (*In progress*): Publish articles from doctoral dissertation.

**BETH PATRICK-TRIPPEL** | (*In progress*): Studying the craft of storytelling (via a literature review) and integrating storytelling into two courses. Collect and organize stories of faith, particularly the radical impact that a local church can have on an individual.

**SUE RATTIN** | (*In progress*): Research and data collection for an ONU Writing Center and the implementation of a pilot program; “Introduction to Career Options” — Experimental course; Freshman Seminar: Connections — Revised.

(*Professional Leadership*): Pearson-Covey Summit: 7 Habits of Highly Effective College Students Product Retreat, Nov. 12–15, 2010, Park City, Utah; Editorial Review Board: 7 *Habits of Highly Effective College Students*; Off to College Editorial Review Board.

**GLEN REWERTS** | (*In progress*): Research and write book on personal/spiritual leadership as it relates to men from the ages of 18 to 35.

**YVETTE ROSE** | (*In progress*): Doctoral studies, Governors State University.

**JOSEPH SCHROEDER** | (*In progress*): Interdisciplinary instructional project with art department for freshman engineering students.

**THALYTA SWANEPOEL** | (*In progress*): Doctoral studies, North-West University, South Africa.

**AARON THOMPSON** | (*In progress*): Plan to co-present with Scott Armstrong a workshop at the annual School of Education “Teacher Day” in November

**HOUSTON THOMPSON** | (*Completed*): Research and presentation at the North American Association of Christians in Social Work Annual Conference, on the topic of restorative justice. Title: “Reframing Justice through Holistic Restoration.” Presentation was peer-reviewed before being accepted. This was co-presented with a 2009 graduate, Cynthia Suparman; Research and submitted for publication, a book chapter on “Managing Conflict in the Church.” This is being published (summer 2010) by Nazarene Publishing House in the book: Peterson, B., Thomas, E., & Whitesel, B. (Eds.). (2010). *Foundations of Church Administration*. Kansas City, MO: Beacon Hill Press of Kansas City.

(*In progress*): Using the research on managing conflict in the church, research and preparation is being completed to present at the North American Association of Christians in Social Work

Annual Conference, on the topic of “Managing Conflict in the Workplace.”

**ROSALIE TUTTLE** | (*In progress*): Integrating simulations utilizing “Noelle” throughout the curriculum of NURS 378 Childbearing Family Health Nursing; Working with professor Susan Day on a research project examining the attitudes of learners regarding the effectiveness of simulation.

**LARRY VAIL** | (*In progress*): NSF CCLI grant for \$196,000 to study “Computing Foundations for the Scientist.”

**DAVID VANCE** | (*In progress*): Research project on privacy.

**MARK WILLIAMS** | (*In progress*): Develop business-related missions trips.

**BRIAN WOODWORTH** | (*In progress*): Research on effectiveness of teaching using only online resources.

.....

## SCHOOL OF EDUCATION

**JONATHAN BARTLING** | (*In progress*): Bartling, J., Knowles, T., Tuttle, S., and Upchurch, J. (2010). “Quantitative Data on the Impact of Graduates of a Standards-Based Master’s Degree Program in Educational Leadership on Student Achievement.” Proposed presentation for the American Association of Colleges for Teacher Education Annual Meeting, San Diego, Calif., February 2011.

**DARCEL BRADY** | (*In progress*): Brady, D., Moore, S., & Reams, D., “Response to Intervention (RTI): A University and School

CONTINUED >

# VI. RECENT SCHOLARSHIP PROJECTS COMPLETED OR IN PROGRESS — CONTINUED

District Partnership” conference proposal for the 63<sup>rd</sup> AACTE Annual Meeting & Exhibits, Feb. 24–27, 2011, San Diego, Calif.

**KELLY BROWN** | (*Professional Leadership*): Appointed to a committee by the Illinois School Board of Education (ISBE) to be part of the 2010 validation to set guidelines and rubric for the State of Mathematics short response and extended response items.

(*Completed*): Assisted in the development of professional development opportunities for a south suburban school district’s faculty and students in ways to enhance the student’s learning. The educational target was on the delivery/donation of 600 grade appropriate books for the library and tutoring students at risk of academic failure.

(*In progress*): Future exploration of professional development opportunities for a south suburban school district will be determined on measuring any gains and providing training to the faculty.

**ROXANNE FORGRAVE** | (*Completed*): Doctoral Dissertation on “Relationship of Rebecca Caudill Young Readers’ Award Books on Students’ Reading Motivation in Three Illinois Rural Middle Schools: A Quantitative Study.”

(*In progress*): Integration and professional development training of faculty and staff at Shepherd Community Church Pre- K – Second Grade Academy with focus on providing activity brochures for individual books to be written in Spanish for use by students and parents.

**TOM KNOWLES** | (*In progress*): Bartling, J., Knowles, T., Tuttle, S., and Upchurch, J. (2010). “Quantitative Data

on the Impact of Graduates of a Standards-Based Master’s Degree Program in Educational Leadership on Student Achievement.” Proposed presentation for the American Association of Colleges for Teacher Education Annual Meeting, San Diego, Calif., February 2011.

**SUSAN MOORE** | (*Completed*): “Remaining Faithful: Understanding how Christian scholarship leaves a legacy through communicating and/or applying worldview” conference presentation at The Legacy of Christian Scholarship Conference, July 16–18, 2009, Kansas City, Mo.

(*In progress*): Brady, D., Moore, S., & Reams, D., “Response to Intervention (RTI): A University and School District Partnership” conference proposal for the 63<sup>rd</sup> AACTE Annual Meeting & Exhibits, Feb. 24–27, 2011, San Diego, Calif.

**DALE OSWALT** | (*Completed*): Presented at the 2010 Conference for the American Association of Colleges of Teacher Education (AACTE), “Teachers’ Attitudes Regarding Multiculturalism.”

(*In progress*): Workshops and training with three school districts’ faculty and students – Naperville, Bourbonnais Elementary, and Shepherd Community Pre-K – Second Grade Academy. Focus will be on the methodologies and teaching techniques of science methods as they relate to the impact of the student’s learning.

**DENA REAMS** | (*Completed*): Presentation, “The Miasma in Diversity,” 10<sup>th</sup> International Conference on Diversity in Organizations, Communities and Nations, Belfast, Ireland.

(*In progress*): AACTE 2010 Proposal: “Response to Intervention, A University School District Partnership;” International Reading Association 2010 Proposal: “Mentoring One Student Towards Success” Literacy Dissertation Presentation.

**SARA SPRUCE** | (*Completed*): Presentation, Illinois Reading Conference, March 19, 2010: “Energize Your Classroom with Writing.”

(*In progress*): A two-year study of our Elementary Reading Instruction students at Liberty Elementary School, Bourbonnais (Grades 5–6), regarding teaching strengths, assessment techniques, and literacy.

**STAN TUTTLE** | (*In progress*): Bartling, J., Knowles, T., Tuttle, S., and Upchurch, J. (2010). “Quantitative Data on the Impact of Graduates of a Standards-Based Master’s Degree Program in Educational Leadership on Student Achievement.” Proposed presentation for the American Association of Colleges for Teacher Education Annual Meeting, San Diego, Calif., February 2011.

**JAMES UPCHURCH** | (*In progress*): Bartling, J., Knowles, T., Tuttle, S., and Upchurch, J. (2010). “Quantitative Data on the Impact of Graduates of a Standards-Based Master’s Degree Program in Educational Leadership on Student Achievement.” Proposed presentation for the American Association of Colleges for Teacher Education Annual Meeting, San Diego, Calif., February 2011.

.....



## BENNER LIBRARY

### JASMINE CIESZYNSKI |

*(In progress)*: Research the role professional librarians play in cultivating best practices for inter-departmental work at the university-level, to be presented at the Illinois Association of College & Research Libraries (IACRL) conference.

### MARY ADA DILLINGER |

*(In progress)*: Using qualitative and quantitative measures, research the factors influencing the participation rate in academic honor societies among graduating college seniors, to be presented to the Olivet faculty and the Association of Christian Librarians Conference.

**PAM GREENLEE** | *(In progress)*: Research effective instructional methods that can be implemented by the professional librarian to encourage the use of scholarly sources among distance students at the university-level, to be presented at the Off-Campus Services Conference or the Illinois Association of College and Research Libraries Conference.

### CRAIGHTON HIPPENHAMMER

| *(Completed)*: Conference presentations: "Institutional Repository: the Olivet Experience," and "The Future of Library Technology," June 8, 2010, Association of Christian Librarians Conference, Northwestern College, St. Paul, Minn.

*(In progress)*: Research and develop initiatives that will lead toward an Open Access Policy for possible adoption by the faculty of Olivet for the purpose of committing to disseminating the fruits of its research and scholarship as widely as possible.

.....

## COLLEGE OF ARTS AND SCIENCES

### GERALD ANDERSON |

*(Completed)*: Sept. 20, 2009, Festival of Keyboards - Harrisburg, Pennsylvania Christ Lutheran Church. Piano Ensemble composed of Ovid Young, Stephen Nielson, Jeff Bennett, and Gerald Anderson; Dec. 5-6, 2009 Festival of Keyboards - Springfield, Missouri Ridgecrest Baptist Church (DVD available); Jan. 11, 2010 - Chicago, Illinois, Moody Bible Institute Chamber Concert, with Rachel Jacklin, ONU violin professor (CD available); March 12, 2010 - Melbourne, Florida, Atlantic Music Company Piano Recital Series, program of solo piano music by American composers; March 13, 2010 - Melbourne, Florida, Master Class for piano students of local teachers sponsored by the local chapter of the Florida Music Teachers Association.

*(In progress)*: Integration of music with liberal arts disciplines, involving a longer-term study of the usefulness of this integration in learning both music and the associated discipline.

### DOUGLAS ARMSTRONG |

*(Completed)*: "Progress Toward the Synthesis of Pentafluorosulfanyl - and Gem - Difluoro-Cyclic Compounds, Including Microwave Assistance," Poster #260 at the 19<sup>th</sup> International Symposium on Fluorine Chemistry, Jackson Hole, Wyo., August 2009; "Progress Toward the Synthesis of Complex Fused-Ring Mesoionic Heterocycles, Including Microwave Assistance," Poster PO-22 at the 22<sup>nd</sup> International Congress on Heterocyclic Chemistry, St. John's, Newfoundland and Labrador, Canada, August 2009; "Undergraduate Students Research in Microwave-Promoted Organic Syntheses" presented at the 21<sup>st</sup>

Biennial Conference on Chemical Education, University of North Texas, Aug. 1-5, 2010, and at the 239<sup>th</sup> American Chemical Society National Meeting, San Francisco, March 21-25, 2010. Awarded a travel grant from the "Center for Workshops, in the Chemical Sciences" (CWCS) for these presentations.

### DAVID ATKINSON |

*(Completed)*: The problem "Chances of a Cruise Ship Birthday Match" was published in "The Playground," the problem section of *Math Horizons* in the September 2009 issue.

**KAREN BALL** | *(Professional Leadership)*: Presented a lecture/demonstration on piano technique for the Kankakee chapter of MTNA; Judged for the National Piano Guild at Wheaton College and at St. Francis College; Acted as clinician for the annual Kankakee Valley Piano Camp, summer 2009.

*(Completed)*: Participated in faculty recital with Dr. Jeff Bell, September 2009; Participated in a faculty recital with professor Martha Dalton, April 2010; Premiered a new piano work titled "Wind Devil" in the annual Composers of Olivet Concert, spring 2010; Recorded a second piano CD of ten original piano hymn arrangements as part of the ONU Presents series.

### REBECCA BELCHER-RANKIN |

*(Completed)*: "White Trash or Plain Folks: Pictures of Poverty in Connie May Fowler's *Before Women Had Wings*," presented at the Southern Women Writer's Conference, Berry College, Roma, Ga., September 2009; "Bakhtin's Heteroglossia and Hawthorne's *The Scarlet Letter*," presented at the Tennessee Philological Association, Lee University, Cleveland, Tenn., February 2010.

CONTINUED >

# VI. RECENT SCHOLARSHIP PROJECTS COMPLETED OR IN PROGRESS — CONTINUED

**JEFFERY BELL** | (*Professional Leadership*): November 2009: Adjudicator for National Association of Teachers of Singing Illinois State Auditions at Augustana College; December: Conducted Orpheus Choir in a 30-minute performance of Christmas music at the Art Institute of Chicago; January, 2010: Adjudicator for National Association of Teachers of Singing Artists Auditions for State of Illinois; March 2010: Accompanist for high school choir division at Association of Christian Schools International regional music festival at ONU.

(*Completed*): September 2009: Presented *Music of the Knight*, a lecture-recital on songs of Don Quixote by Maurice Ravel and Jacques Ibert, at ONU; February 2010: Guest conductor with the Kankakee Valley Symphony Orchestra and Chorus, with Orpheus Choir in *Choruses from Great Operas*; May 2010: Collaborative pianist with Katherine Benson (flute) in a recital for the Lakeview Musical Society in Chicago.

(*In progress*): Research and presentation of a series of Lecture-Recitals of voice music that is not part of the traditional major repertoire.

**NANCY BONILLA** | (*In progress*): Study of the Smart Board as a learning tool in the foreign language classroom, especially in its relation to student engagement.

**RAY BOWER** | (*In progress*): For fall, a series of experiments on the Stimulus Prefix Effect in human memory, and for spring, an experiment on the Suffix Effect in human memory.

**KEVIN BREWER** | (*Professional Leadership*): Served on the Geoenvironmental Engineering Panel Review for the Division of

Civil Mechanical and Manufacturing Innovation of the National Science Foundation, December 2009.

(*In progress*): Develop an integrated Historical/Cultural/Geologic/Geographic extended summer Western U.S. field trip/course; Develop a pre-freshman Geology summer trip/course; Investigation of optimal techniques using current simulation and computer technologies to quantify uncertainty in transient groundwater flow and transport model results due to parameter and conceptual model uncertainties; Development of a web-based flexible system to allow individuals or teams of students to interact (and compete) in a timed simulation environment such as oil and gas exploration, environmental contamination/remediation, and/or geophysical exploration.

**JUSTIN BROWN** | (*Completed*): “Wahl’s Conjecture for a Minuscule G/P” (co-authored with V. Lakshmibai). Proceedings of the Indian Academy of Sciences (Mathematical Sciences), Vol. 119, No. 5, November 2009, pp. 571–592.

(*In progress*): A standard monomial theory for the defining ideal of a tangent cone at a singular point of a Schubert variety.

**STEPHEN BROWN** | (*Professional Leadership*): Proofread the questions and helped judge the Oral Contest Questions for the Mathematics Teams at the Annual River Valley Mathematics Contest, held at the Illiana Lutheran Schools in Crete, Ill., on March 17, 2010.

(*Completed*): “A ‘Founders of Mathematics’ Project, More Than a Biographical Listing,” presented at the Annual Meeting of the National Council of

Teachers of Mathematics in San Diego, Calif., on April 23, 2010.

**WILFREDO CANALES** | (*Professional Leadership*): Appointed as a member of the 2009–2013 Hispanic Strategic Readiness Team (HSRT) of the Church of the Nazarene in the United States and Canada. This Team has a consulting role on development of the Hispanic churches in this region; Appointed to serve on the 2009–2013 USA Regional Course of Study Advisory Committee (RCOSAC). The broad task of RCOSAC is to resource our USA Church of the Nazarene in the development of our clergy, including oversight of the validation process for our ministerial course of study.

**CHARLES CARRIGAN** | (*Completed*): Carrigan, C.W., & Skalac, P.F., 2009, Integrating upper level content with introductory material for better learning, with an example from mineralogy. *Geol. Soc. Am. Abstr. Prog.*, 41 (7), 714. Presented at the Geological Society of America Annual Meeting in Portland, Ore., Fall 2009; Carrigan, C.W., 2010, Teaching mineralogy in the context of the rock cycle. *Geochim. Cosmochim. Acta*, 74 (11), A146 Presented at the 2010 Goldschmidt geochemistry conference in Knoxville, Tenn., July 2010.

(*In progress*): Constraints on southern Appalachian tectonic history through a geochemical study of rutile; Continued explorations into how to be more effective in teaching geology.

**STEPHEN CASE** | (*Completed*): “Insufferably Stupid and Miserably Out of Place,” F.A.P. Banard and His Scientific Instrument Collection in the Antebellum South. *Historical Studies in the Natural Sciences*, Vol. 39:4 (Fall 2009) pp. 418–444.

**JOHN CHANG** | (*in progress*): Work on articles in Shakespeare, 19<sup>th</sup> Century British Literature, and ESL.

**DAVID CLABORN** | (*In progress*): A study of "Approaches to Measuring State Attempts to Increase Religious Freedom."

**MARTHA DALTON** | (*Completed*): Performed a joint faculty recital with professor Katherine Benson, April 6, 2010.

**WILLIAM DEAN** | (*Professional Leadership*): Taught a church history course for Caribbean Nazarene College in the DTS program in Mandeville, Jamaica in May 2010.

(*Completed*): Completed the book "Walking Together: Relationships that Transform" that is awaiting publication.

**SCOTT DOMBROWSKI** | (*Professional Leadership*): Gave small photography workshop to KCHE home school students, October 2009; Was invited guest lecturer for the Art Career Symposium at Taylor University, March 2010.

(*Completed*): Exhibited and presented recent art work at the ONU Faculty Exhibit, fall 2009, and Small Works Exhibit, spring 2010.

**LARRY FERREN** | (*In progress*): Collaborating with Dr. Willa Harper to assist her research efforts with A2E – cyclic voltammetry on purified A2E; Plans to conduct studies on the fluorescence of proteins that will model the age-related browning reaction of human collagen.

**LEO FINKENBINDER** | (*Completed*): "The significance of the historical Mayan and Aztec Icon, the Resplendant Quetzal, to Modern Societies," "Concerning methodologies in the development of Field Research Stations and the

History of the Development of the Quetzal Education Research Center, Costa Rica," which he founded in 1986. Both invited lectures were presented at the University of Costa Rica, San Jose, CR and the Quetzal Education Research Center, San Gerardo de Dota, CR. The lectures were part of "The Year of the Quetzal Jubilee, 2010" being celebrated throughout Central America.

(*In progress*): Collecting permits have been obtained to allow for student research on wild populations of vertebrates in Illinois, small mammal populations now being analyzed on ONU campus.

**JULIENE FORRESTAL** | (*Completed*): "Becoming More Human through Reading Literature" presented at the Faith in Literature Symposium, ONU, 13 April 2010.

(*In progress*): "Designing Gen Ed Lit for Survival" article with Rebecca Belcher-Rankin, to submit to the College English Association's online journal, *Forum*.

**LISA GASSIN** | (*Professional Leadership*): Newsletter committee for the Illinois Association of Play Therapy; Conducted 4.5 hour CEU course, "Interpersonal Forgiveness: Learning How to Forgive Others," for mental health providers through Associates for Counseling and Psychotherapy in Crest Hill, Ill., Nov. 7, 2009.

(*Completed*): Gassin, E. A. (2010, March 1). Playing their way into the kingdom. *Epworth Pulpit*; Gassin, E. A. (2010). Cultural variations in the link between attachment and bereavement. In P. Erdman & K.M. Ng (Eds.), *Attachment: Expanding the cultural connections* (pp. 71–87). New York, NY: Routledge/Taylor & Francis; Gassin, E. A. (2010 Spring/Summer). Parental

ethnotheories in the playroom. *Illinois Association for Play Therapy Newsletter*, pp. 5–6.

**ANDY GIBBS** | (*Professional Leadership*): Illinois Association of Teachers of English, Co-District Leader, East Central District.

(*Completed*): "Postmodern Prayer in Contemporary Literature, or did he really just pray using baseball" – Presented at the Faith and Literature Symposium, Center for Faith and Culture, Olivet Nazarene University, April 13, 2010.

**DWIGHT GINN** | (*In progress*): "Development of a DNA Cloning Procedure for the Advanced Genetics laboratory: Cloning of the *Vibrio fischeri* Bioluminescence (*Lux*) Gene Using Long Distance Polymerase Chain Reaction." This project will use existing scientific methodology and modify it to work appropriately in a teaching laboratory.

**DAN GREEN** | (*In progress*): Developing study guide materials to help actuarial science majors understand financial derivatives in preparation for the Society of Actuaries FM Exam.

**BILL GREINER** | (*Professional Leadership*): Judge for the First Baptist Church Art Contest, March 2010; Consultant for Provena Hospital on interior designing and lettering, November–May, 2010; Restoration work on a mural at Provena Hospital, March 2010.

(*Completed*): "Awaking the Senses to Art and Music," third edition of the Fine Arts textbook, published by Pearson; Painted the cover *Awakening the Senses to Art and Music*.

CONTINUED >



# VI. RECENT SCHOLARSHIP PROJECTS COMPLETED OR IN PROGRESS — CONTINUED

**DALE HATHAWAY** | (*Professional Leadership*): Served as a referee for an article titled, “Random Numbers Demonstrate the Frequency of Type I Errors: Three Spreadsheets for Class Instruction,” for the *Journal of Statistics Education*, September 2009.

(*Completed*): Problem Solution Published: Problem 1212, Problem Department of *The IIME Journal*, Vol. 13, No. 2, Spring 2010, p. 125–126. The proposed problem was solved including proof of a generalization of the problem. (Note: *IIME* stands for Pi Mu Epsilon)

**WILLA HARPER** | (*Professional Leadership*): Judged oral presentations at the Women Chemists Committee of the East Central Illinois chapter of the American Chemical Society Undergraduate Research Symposium.

(*Completed*): “Computational Studies of the Nucleotide Binding Domains of ABCR” poster presented at the Women Chemists Committee of the East Central Illinois chapter of the American Chemical Society Undergraduate Research Symposium.

(*In progress*): We will be working on experiments to synthesize, purify, and analyze molecules that form in the eye during the progression of diseases.

**KRIS INGRAM** | (*Completed*): *Bigger Thomas: A Rolling Stone. The Essence of Existential Crisis in Existence*. Lambert Academic Publishing, 2009.

(*In progress*): Conduct a pilot study for a writing center at Olivet Nazarene University.

**DAVID JOHNSON** | (*Completed*): “The Interplay of Faith and Doubt in Contemporary Literature” presented at the Faith in Literature Symposium, ONU,

April 13, 2010, sponsored by the Center for Faith and Culture.

**PATRICK KIRK** | (*Professional Leadership*): Judge for the First Baptist Church Art Contest, March, 2010; Cherry Street Art Fair judge, Watseka, Ill.; Prepared publicity and posters for Marriage Incorporated; Developed T-shirt illustrations for Dr. Joe Schroeder for Bradley/Bourbonnais District swimming competition.

(*Completed*): Exhibited and presented recent art work at the ONU Faculty Exhibit, fall 2009, and Small Works Exhibit Spring 2010; “Communication Design for Trade and Commerce,” presented at the Spring Scholarship Symposium at ONU, April 2010.

**KAREN KNUDSON** | (*In progress*): Dissertation project: “King Solomon in Medieval Literature: *Sir Gawain and the Green Knight*, Malory’s *The Tale of the Holy Grail*, and Chaucer’s *The Merchant’s Tale*.”

**GREG LONG** | (*In progress*): Participating in the NSF grant to the computer science department to develop a course and “pull-out” modules. Two modules: 1) use of genetic information to construct and interpret phylogenetic tree structures, and 2) use of appropriate software tools for gene sequence alignment and interpretation of genetic data, as part of an experimental course.

**STEPHEN LOWE** | (*In progress*): Doing a study on the history of golf in the Progressive Era.

**KASHAMA MULAMBA** | (*Professional Leadership*): Chaired the Applied Linguistics Section of the 2009 Midwest Modern Language Association Convention in St. Louis, Mo.

(*Completed*): “Social Beliefs for the Realization of the Speech Act of Apology and Complaint

as Defined in Ciluba, French and English” in the December 2009 International Pragmatics Association (IPrA) *Quarterly*.

**NEAL MCMULLIAN** | (*Professional Leadership*): Presented music in-service to the Flossmoor District 161 music teachers on Technology in the Music Classroom; Beginning 6th year as conductor of the Kankakee Municipal Band; Served as contest judge of four different events for the IESA (Illinois Elementary School Association) and the IGSMA (Illinois Grade School Music Association).

(*In progress*): Preparing for a recital in October 2010.

**TIM NELSON** | (*In progress*): *Positive Psychology in the classroom*.

**KENT OLNEY** | (*Professional Leadership*): Reviewed article, “Deaf America and the Second Great Awakening,” for the Disability Studies Quarterly, in August 2009; Keynote speaker for the Northeastern Indiana District, Church of the Nazarene, Sunday School Spirit Rallies, February, 2010.

(*Completed*): Presentation to Kankakee County Clergy, “Marriage and Divorce in Kankakee County: A Statistical Overview,” Sept. 15, 2009; Presentation to Olivet faculty, “Making the most of an Oxymoron: How a Christian Integrates Faith into the Study of Sociology,” April 12, 2010.

**CHARLES PERABEAU** | (*Professional Leadership*): Member, Academic Advising Board, *Taking Sides: Global Issues* text, McGraw Hill Publishing.

(*In progress*): Book chapter, “Strangers in the World: Sociological Implications for Holy Living;” Dissertation: “The Church of the Nazarene, 1895–1985: Race, Class, and

Gender in the Struggle with Pentecostalism.”

**AGGIE POSTHUMUS |**

*(In progress):* Perform a study of student perception of relevance of biology for non-majors in everyday life.

**MICHAEL PYLE |** *(In progress):*

Evaluation of a condition called biliary dyskinesia. There is relatively little in the literature about long-term outcome after surgery for this condition, particularly the hyperactive variant. Fall will involve completion of the data collection portion of the study.

**MAX REAMS |** *(Completed):*

“Visualizing surface processes through geologic time by repeat photography, revisited,” presented orally at the North-Central and South-Central Sections joint meeting of the Geological Society of America, Branson, Mo., April 12, 2010.

**BETH SCHURMAN |** *(Completed):*

“Teaching in a Third Space: Eliminating the Mind/Body Dichotomy in the Classroom” (Fall 2009). Presented at the National Conference for Teachers of English.

**PRISCILLA SKALAC |**

*(Professional Leadership):* Served on the Bias Committee, Item Review Conference, Illinois Certification Testing System, February 2010, Springfield, Ill.

*(Completed):* “An Interactive Presentation on the Role of Rubrics,” presented at the October 2009 ONU faculty meeting; “Rubrics as a way to Measure Learning,” presented at the February 2010 ONU faculty meeting; “The Traveling Science Circus: Developing Pre-K – 12 Geoscience Educators Through Public Outreach Opportunities.” Presented at the Geological Society of America North Central/South Central

Joint Meeting, April 12, 2010, Branson, Mo.

*(In progress):* Currently working with Dr. Kevin Brewer to write a series of devotions on character.

**DALE SMITH |** *(Completed):*

Presented at the Annual Meeting of the Psychonomic Society in Boston on “Recollection and the Testing Effect: The Role of Intervening Test Performance and Delay.”

*(In progress):* Completing two manuscripts for publication on research in recognition memory and teaching evaluation completed in collaboration with three undergraduate students.

**GARY THOMAS |** *(Professional Leadership):*

Complete mural with local artist and ONU student at Schuyler Ave. Majestic Center, Kankakee, Ill., in October 2009. Presents work in the Majestic Center hallway.

*(Completed):* Exhibited at Union Street Gallery in Chicago Heights, juried exhibition, July 2009; One-person exhibition at Watseka court house museum, August 2009; Exhibited and presented recent art work at the ONU Faculty Exhibit, fall 2009, and Small Works Exhibit, spring, 2010; Printmaking workshop for Gretchen Charlton Gallery, April 2010; Exhibited in three-person exhibition in August 2010, Union Street Gallery, Chicago Heights, Ill., August 2010; juried exhibition.

**VICKI TRYLONG |** *(In progress):*

Developing power points to teach French vocabulary and Quebecois culture using roads and advertising signs.

**DAVID VAN HEEMST |**

*(In progress):* Completing manuscript, “Connecting with her Heart: Becoming the Dad your Daughter Needs.”

**KRISTIAN VEIT |** *(Completed):*

Mentored the first place recipient (John Adams) of the 2010 Harold Young Research Award (presented by the Association of Nazarene Sociologists and Researchers); Mentored and supervised 11 students who presented their research on April 10, 2010, at the 2010 Associated Colleges of the Chicago Area symposium.

*(In progress):* Poster presentation titled “Examining relationships between work family conflict, sunset fatigue, and personality” was accepted for the 2010 American Psychological Association convention to be held in San Diego, August 12–15.

**SUE WILLIAMS |** *(In progress):*

Conduct a pilot study for a writing center at Olivet Nazarene University.

**NEAL WOODRUFF |** *(Professional Leadership):*

Guest Conductor/Clinician, River Valley Conference High School Honor Choir.

*(Completed):* Three reviews of new choral music, published in the June edition of the American Choral Director’s Association - Choral Journal; Tenor Soloist-Kankakee Valley Symphony Orchestra Opera Gala; Conductor of ONU Concert Singers’ musical missions tour to South Korea and Hong Kong.

*(In progress):* Voice Pedagogy session to be presented to the Illinois Music Educator’s conference for January 2011. Planned study: “How Do I Sing That? Choral Director as Voice Teaching Professional: Helping Students Safely Navigate the Waters of Style.” In collaboration with voice faculty at Bradley University and Augustana College.

.....

CONTINUED >

# VI. RECENT SCHOLARSHIP PROJECTS COMPLETED OR IN PROGRESS — CONTINUED

## SCHOOL OF THEOLOGY AND CHRISTIAN MINISTRY

### **LEON BLANCHETTE** | (*Completed*):

Chapter in *A Theology of Family Ministry* - "Biblical Milestones in the Life of a Child;" Two chapters in *The Teaching Church: An Introduction to Christian Education from a Wesleyan Holiness Perspective* - "Jesus the Master Teacher" and "Do As I Do and As I Say: Intentional Discipleship;" "Reaching Children in Today's World"-workshop for General Assembly, Church of the Nazarene; "Spiritual Formation of Children" - workshop for Pastor Appreciation Day, fall 2009; "How to Disciple so Children will be Faithful to God," "Ministering to the Unique Needs of Preteens," and "Recruiting Volunteers and Keeping Them," - workshops presented at Northwest Indiana Discipleship Conference.

(*Professional Leadership*): Serving on a "Preventing Sexual Abuse" committee that is part of an initiative by the General Church of the Nazarene.

(*In progress*): Study on "Experiencing God in the Dark" — explores the impact of darkness and silence on a child's interaction with God.

### **RON DALTON** | (*In progress*):

Requested to submit commentary for publication.

### **EDDIE ELLIS** | (*In progress*):

"Experiencing God's Victory: A New Testament Perspective on Sexual Abuse" for *The Long Journey Home*, an edited volume on sexual abuse to be published by Wipf & Stock. In final editing.

### **MARK FRISIUS** | (*In progress*):

Dissertation on "Tertullian's Biblical Exegesis" has been accepted for publication by

Peter Lang; Submitted article on "Tertullian's Understanding of the Paradox between Justice and Mercy in God," Spring 2011, *Journal of Early Christian Studies*.

### **CARL LETH** | (*Completed*):

"Speaking the Truth in Love," *Holiness Today*, June/July 2010.

"Prophezei – A Reformation Model for Interpretation of Scripture," Paper presentation -Wesleyan Theological Society, March 4–6, 2010; "Emerging Church 101," workshop presented with Mark Holcomb for Church of the Nazarene Pastors & Leaders Conference (PALCON), May 17–19, 2010, Olivet Nazarene University; "Creating a One-Year Plan of Ministry," workshop for CCD Team Day, October 2009.

### **KEVIN LOWERY** | (*Completed*):

"Where Should Wesleyan Ethics Go from Here? A Response to Eric Manchester," *Conversations in Religion and Theology* 8, no. 1 (May 2010):54-9; "Empiricism and Wesleyan Ethics," Paper Presentation - Wesleyan Theological Society, 6 March 2010.

(*In progress*) "Religion within the Boundaries of Morality and Reason," - in process of completion in preparation for submission in the summer of 2011; "Empiricism and Wesleyan Ethics." *Wesleyan Theological Journal* 46, no. 1 (Spring 2011): TBD. (forthcoming).

### **KEVIN MELLISH** | (*Completed*):

"The King of the Beasts," *Illustrated Bible Life* 33:2 (2009–10): 22–23; "The Book of Deuteronomy," *Adult* 33:4 (2010): 5; "King Saul: Tragic Hero or Just Tragic," Paper presented at the annual meeting Midwestern Regional AOS/ASOR/SBL, Valparaiso, Ind., Feb. 14, 2010.

(*In progress*): "Baker's Street," "Calneh," "Camp," and "Canneh," articles submitted to *Encyclopedia of the Bible and Its Reception*; "Temple," "Lament," "Devil/Satan," and "Legalism," articles submitted to *Global Wesleyan Dictionary of Theology*; *1 and 2 Samuel* (New Beacon Bible Commentary), due in 2010.

### **FRANK MOORE** | (*Completed*):

"Living with Unanswered Prayer," *Holiness Today*, July 2010.

*Breaking Free from Sin's Grip* translated into Russian, 2010; *Coffee Shop Theology*, translated into Arabic & Spanish, 2009 and Vietnamese, 2010; *More Coffee Shop Theology* translated into Arabic and Spanish, 2009 and Vietnamese, 2010; *Rendezvous* translated into Spanish, 2009; "Remaining Faithful: Understanding how Christian scholarship leaves a legacy through communicating and/or applying a Christian worldview," conference presentation at The Legacy of Christian Scholarship Conference, July 16–18, 2009, Kansas City, Mo.; "21<sup>st</sup> Century Trends in Theology," conference presentation at Church of the Nazarene Pastors & Leaders Conference (PALCON), May 17–19, 2010, Olivet Nazarene University.

(*Professional Leadership*): Speaker for Capital Area Holiness Crusade hosted by five denominations, Jan. 31–Feb. 3, 2010, Lansing, Mich.

(*In progress*): *Jesus is Lord*, a new book on applying the lordship of Christ to daily life. To be published by Beacon Hill Press of Kansas City, Spring 2011.

### **LARRY MURPHY** | (*In progress*):

Entries for the upcoming *Global Wesleyan Dictionary of Theology*, to be published by Nazarene Publishing House. Submitted in June 2010.

**MARK QUANSTROM** |

*(Completed):* Holiness/ ecclesiology seminar for Church of the Nazarene Pastors & Leaders Conference (PALCON), May 17–19, 2010, Olivet Nazarene University.

*(Professional Leadership):* Bible Teacher/Preacher at Eastern Michigan District Campmeeting, July 19–26, 2009; Speaker - British Columbia Preacher's Retreat Jan. 22–24, 2010; Speaker - Michigan Holiness Summit March 15–16, 2010.

*(In progress):* *From Grace to Grace*, submitted and in process of publication by Beacon Hill press of Kansas City.

**ROBERT SMITH** | *(In progress):* "Funding the Global Mission," a writing project that is an outcome of sabbatical research.

**DAVID WINE** | *(Completed):* "The Great Omission-Revitalizing Discipleship in Our Lives and In Our Congregations," workshop presented for Pastor Appreciation Days, fall 2009.

*(In progress):* Interested in exploring the role of accountability in the spiritual development of a disciple of Jesus Christ.

## VII. ADVANCED DEGREES EARNED

**SUSAN DRAINE**, Ed.D.,  
Nova Southeastern University

**ROXANNE FORGRAVE**, Ed.D.,  
Argosy University

**EMILY LAMB NORMAND**, Ph.D.,  
University of Nebraska-Lincoln

**MARK MOUNTAIN**, Ed.D.,  
University of Nebraska-Lincoln

**PATRICIA NIELSEN**, D.N.P.,  
Valparaiso University

**ROSALIE TUTTLE**, Ph.D.,  
Capella University

**BRIAN WOODWORTH**, M.A.,  
Olivet Nazarene University

## VIII. RECOGNITIONS AWARDED

**DAVID ATKINSON** | Inducted as an honorary member in the Olivet chapter of Phi Delta Lambda, the honor society for Nazarene Colleges and Universities, at their annual induction banquet on May 7, 2010.

**REBECCA BELCHER-RANKIN** | Received the Samuel L. Mayhugh Award for Scholarly Excellence, May 2010.

**MARK BISHOP** | Granted the American Meteorological Society's Seal of Approval for weathercasting.

**CHARLES CARRIGAN** | Elected president of the Affiliation of Christian Geologists for 2010–2012.

**STEPHEN CASE** | Awarded a fellowship in the History and Philosophy of Science program at Notre Dame, where he will be pursuing his Ph.D.

**GREGG CHENOWETH** | Appointed to the Consultant-Evaluator Corps for the Higher Learning Commission of the North Central Association of Colleges and Universities.

**LEO FINKENBINDER** | The "Leo Finkenbinder Ecology Fund" was established at Southern Nazarene University in recognition of Dr. Finkenbinder's work with students. This fund is supported by alumni and friends of Southern Nazarene University and is to be used for scholarships of students interested in wildlife careers and support of field research at SNU.

**HEATHER GIBBS** | Received the American Dietetic Association Foundation's Dora E. Culver Award for 2009–2010 academic year; Received the Alice and Charlotte Biester Graduate Fellowship Merit Award (2009–2010), Food Science and Human Nutrition Department, University of Illinois.

**BILL GREINER** | Accepted into the Who's Who in American Art, October 2009.

**DALE HATHAWAY** | Elected chair-elect for the Illinois Section of the Mathematical Association of America (ISMAA); Appointed table leader and question team member for the June 2010 AP Calculus Reading in Kansas City, Mo.

**JAN HOCKENSMITH** | National Association of Social Workers, Illinois Chapter, Calumet District, Lifetime Achievement Award.

**KASHAMA MULAMBA** | Received the 2010 J. Williams Fulbright-Hays Seminar Abroad Program to China Award.

**STAN TUTTLE** | Received the Richard M. Jones Faculty Award for Teaching Excellence, May 2010.

**JAMES UPCHURCH** | Served on Illinois State Educators Code of Ethics Committee in the development and implementation of a State-Wide Standard for a Code of Ethics for all Educators.

**NEAL WOODRUFF** | Illinois Governor for the National Association of Teachers of Singing; Associate Artistic Director for the Sugar Creek Opera.

# IX. RECOGNITION FOR YEARS OF SERVICE

## *Administrative Faculty*

### **35 YEARS**

Jim Knight  
Douglas Perry

## *Faculty*

### **40 YEARS**

David Atkinson

### **25 YEARS**

Douglas Armstrong  
Diane Richardson

### **20 YEARS**

Mary Ada Dillinger  
Paul Koch  
Sue Rattin

### **15 YEARS**

Donald Daake  
Gregory Long  
Kent Olney  
David Wine

### **10 YEARS**

Neal Woodruff

### **5 YEARS**

Susan Day  
Heather Gibbs  
Tiffany Greer  
Willa Harper  
Patricia Krohmer  
Bethany Mills  
Charles Perabeau  
Agnes Posthumus  
Mark Quanstrom  
Nathaniel Reiss  
Priscilla Skalac  
Rosalie Tuttle

## *Staff*

### **25 YEARS**

Keith Reel  
Freda Wolfe

### **20 YEARS**

Ann Atkinson  
J. Patrick Whalen

### **15 YEARS**

Obie Coomer  
Dan Ferris  
Matthew Foor  
Marc Harris  
Brenda Kirby  
De Ann Motz  
Susan Turner  
Elica Wilson

### **10 YEARS**

Mary Haskins  
Jean Milton  
Dawn Waldron  
Marlin Wallace

### **5 YEARS**

Jeremy Alderson  
Michael Bretzlaff  
Patricia Campbell  
Craig Ellis  
Johnathon Eltrevoog  
Jordan Fish  
Lorna Guimond  
Heather Hathaway  
Donna Hoebet  
David LaMontagne  
Tiffany McCann  
Patrick McConnell  
Pamali Meadows  
Matthew Moore  
Emmanuel Musyoka  
Faith Newman  
Raymond Reiplinger  
Ann Marie Turner  
Llewellyn "Mike"  
Williams  
Joshua Williams



# FACULTY/STAFF

## MEMBER OF THE YEAR 1954–2009

### 2009

All Faculty and Staff

### 2008

Dr. Jeff Bell

Mrs. Dianne Schaafsma

### 2007

Dr. Bob Wright

Mrs. Kathy Steinacker

### 2006

Dr. Don Reddick

Mr. Greg Bruner

### 2005

Dr. Shirlee A. McGuire

Mr. Brian Parker

### 2004

Dr. Carol Maxson

Mr. Matt Whitis

### 2003

Dr. Diane Richardson

Mr. Dan Ferris

### 2002

Dr. Sara Spruce

Rev. Walter “Woody” Webb

### 2001

Professor Amy Golyshko

Mrs. Mary Anderson

### 2000

Dr. Richard Colling

Mr. Brian Allen

### 1999

Dr. Judith Whitis

Mr. Wendy Parsons

### 1998

Mrs. Kathy Boyens

Mrs. Phyllis Harris

### 1997

Mr. Larry Watson

Mr. Gary Griffin

### 1996

Professor Mike LaReau

Mrs. Betty Elliott

### 1995

Dr. Henry L. Smith

Mr. David J. Pickering

### 1994

Dr. Randal D. Johnson

Mr. Darrell W. Bellomy

### 1993

Rev. William Foote

Mrs. Joyce Muhm

### 1992

Professor Charlotte Keck

Mr. Donald Keck

### 1991

Dr. Harlow Hopkins

Mrs. Mary Gates

### 1990

Mr. Allan Wiens

Mrs. Thelma Collins

### 1989

Dr. Gerald Anderson

Mrs. Connie Skinner

### 1988

Mr. Frank Garton

Mr. Dennis Seymour

### 1987

Mr. Don Toland

Mr. Jim Knight

### 1986

Dr. Gary Streit

Mr. Doug Perry

### 1985

Dr. William Ellwanger

Rev. John Mongerson

### 1984

Dr. Harry Westfall

Mr. Phil Richardson

### 1983

Dr. Carolyn Sechrist

Mr. Clifford Hayman

Mrs. June Hayman

### 1982

Dr. David Atkinson

Rev. Gordon Wickersham

### 1981

Mrs. Gunnell Jorden

Mr. Pat Duncan

### 1980

Dr. George Dunbar

Mr. Richard Matheny

### 1979

Dr. Joseph Nielson

Mr. James Tripp

### 1978

Dr. Harvey Collins

Mr. Linford Marquart

### 1977

Mr. C.W. Ward

Dr. Richard Wirt

Dr. William Hodges

Ms. Judy King

### 1976

Dr. Max Reams

Dr. Ted Lee

### 1975

Dr. Harry Fulton

Mr. Efton Elliott

### 1974

Dr. Joseph Nielson

Mr. James Tripp

### 1973

Dr. William Bell

Dr. L.A. Marquart

### 1972

Dr. Otho Jennings

Rev. Norman Moore

### 1971

Dr. Ralph Perry

Dr. Mervyn Goins

### 1970

Professor Naomi Larsen

Mr. Roy Brown

### 1969

Dr. Mary Shaffer

Ms. Esther Tripp

### 1968

Professor Elbert Pence

Mr. Charles Beatty

### 1967

Dr. Vernal Carmichael

Mr. William Bennett

### 1966

Dr. John Hanson

Mrs. Ruth Lane

### 1965

Dr. Fordyce Bennett

Dr. John Cotner

### 1964

Dr. David Jones

Mr. Charles Henderson

### 1963

Dr. Vernon Groves

Mrs. Gladys Corbett

### 1962

Dr. Billy Hobbs

Mrs. Dorothy Swearengen

### 1961

Professor Gardner Walmsley

Mr. Albert Bloom

### 1960

Professor Rockwell Brank

Mr. Harlan Milby

### 1959

Dr. Coral Demaray

Mrs. Emily Reeves

### 1958

Mr. Leonard Anderson

Dr. Willis Snowbarger

### 1957

Dr. Walter Larsen

Dr. R.L. Lunsford

### 1956

Dr. Clarence Grothaus

Mr. Ed Brodien

### 1955

Professor Leo Slagg

Dr. Paul Schwada

### 1954

Dr. D.J. Strickler

Mr. Alyn Fletcher

# A BRIEF HISTORY OF OLIVET

**O**livet Nazarene University's origins can be traced to the first decade of the last century and to the resolve of several families in east central Illinois who were committed to providing a Christian education for their children. In 1907, classes began in a home in the community of Georgetown, Illinois, and a year later, the founders acquired several acres of land in the nearby village called Olivet. There, they raised a modest building and added the secondary level of instruction. A College of Liberal Arts followed in 1909, along with the first name for this fledgling, but ambitious, institution: "Illinois Holiness University."

By 1912, the founders and trustees were aware of the school's need for a wider constituency and offered to give their educational work to the Church of the Nazarene. This young denomination accepted the school with a pledge to support and promote its ministry of Christian higher education. That early church commitment is still being perpetuated by the more than 800 Nazarene congregations throughout Illinois, Indiana, Michigan, and Wisconsin.

The school grew slowly during the next decade. There were several acting and short-term presidents; the campus of 18 acres contained only a few small buildings; the first yearbook, the *Aurora*, was published in 1914; and a new school name followed in 1915: "Olivet University." In 1923, the name was changed to "Olivet College."

As was the case with many small church colleges in the 1920s, Olivet's financial base eroded significantly, forcing the trustees to declare bankruptcy in 1926. Then-college treasurer Dr. T.W. Willingham bought the school back at a public auction, outlined a new plan for solvency, and was elected that night to serve as president.

A devastating fire destroyed the main campus building in November 1938, prompting the newly

elected president, A.L. Parrott, and the trustees to consider locating a new campus as an alternative to rebuilding at their rural site. They found and purchased the present campus in Bourbonnais in 1939 and moved the college in the summer of 1940. "Nazarene" was added to the college's name that same year.

At the time of Olivet's move to Bourbonnais, the campus consisted of 42 acres, which had been the site of St. Viator's College from 1868 until it closed in 1938. Four of the buildings purchased then are still in use today.

Receiving formal recognition and accreditation by the University of Illinois in 1939 was a major academic milestone for Olivet. The college catalogs of the 1940s reflected a School of Liberal Arts, a School of Music, a School of Religion, and a high school Academy. In 1953, under the skillful leadership of Dr. Harold W. Reed, president, and Dr. Willis Snowbarger, newly appointed dean, all areas of study were grouped into curricular divisions, still the model for Olivet's academic organization.

Dr. Harold W. Reed, president from 1949–1975, led Olivet through a period of remarkable growth, including the construction of 20 major buildings to

keep pace with swelling student enrollments.

Dr. Leslie Parrott continued this focus on campus expansion, development and beautification during his 16-year tenure with a specific interest in the elevation of Olivet to university status.

In 1986, the school's name was changed to "Olivet Nazarene University" to reflect the diversity of academic programs and graduate studies.

In 1991, Dr. John C. Bowling became president and has led the University in continued growth and effective ministry.

During the decade of the 1990s, Olivet expanded and strengthened both its undergraduate and graduate programs. The University established a formal development program including planned giving and major gifts, an annual fund program known as Friends of Olivet, renewed grant writing, a comprehensive program of donor relations, and the "In Word and Deed" capital campaign. In 1994, a full-time chaplaincy program was established to give direction to chapel, student spiritual life activities, small-group ministries, missions, and compassionate ministry experiences.

Chalfant Hall was renovated; the Harlow E. Hopkins Alumni Center was established; Milby Clock Tower was reconstructed; Ludwig Dining Room, the Red Room, and the bookstore were renovated; the coffee shop, Common Grounds, was established; the Olivet computer, media, and communications network was created; the campus entrance was completed; and the Admissions Center was constructed.

In recent years, the Weber Center has been constructed, two parcels of land south of the Admissions Center have been purchased,



Larsen Fine Arts Center has been renovated, and significant improvements to the athletic fields have been completed.

In the summer of 2003, the University continued to upgrade and expand its facilities. Olivet purchased from Provena Healthcare the former Fortin Villa property of 25 acres of land along Main Street, just south and west of the main campus.

On the main campus, in Birchard Gymnasium, the University turned the fitness center into a new varsity weight room, and the pool area into a new fitness center for students, faculty and staff. In Snowbarger Athletic Park, additional seating and a new press box were installed at Larry Watson Baseball Field; tennis courts were resurfaced and new nets and posts were installed; Ward Field was renovated to include a larger running track, a new entry building, fencing, refurbished bleachers, a new larger press box and an enhanced facade. Electric service was improved throughout Snowbarger Athletic Park.

In 2004, President Bowling introduced the theme “Promises to Keep” to students, faculty, churches and alumni. These “promises” included plans for a Centennial Chapel to seat about 3,000 for chapel and other events.

Information Technology expanded wireless access throughout the campus, including wired access to every classroom and residence hall room. In the academic realm, the radio station WONU-FM and broadcasting classes moved from the north wing of Benner Library to a former restaurant building next to the Admissions Center on Main Street. The Department of Communication and some art classes moved into the library space, including new television,

graphic arts and photo studios. Campus athletic fields were improved with new sod, and lighting was added to Ward Field.

The School of Graduate and Continuing Studies established a Chicago Regional Center in Rolling Meadows, Illinois.

In 2005, North Central Association granted ONU continued accreditation for the maximum of ten years without conditions. A major reorganization of academic divisions, departments and schools was approved to begin in the fall semester.

The new plan includes the College of Arts and Sciences, School of Education, School of Professional Studies, School of Theology and Christian Ministry, and School of Graduate and Continuing Studies.

The top three floors of Burke Administration Building were remodeled for use by the Department of English and Modern Languages on the fourth floor, School of Theology and Christian Ministry on the third floor, and Institutional Advancement on the second floor. Offices for the academic vice president and the registrar are being expanded on the main floor. The Department of Mathematics joined the Career and Counseling Center on the ground floor.

The Bourbonnais offices for the School of Graduate and Continuing Studies moved to 21 Heritage Drive, north of the main campus. The former Fortin Villa property was readied for ROTC classes and intramural sports fields.

In preparation for the fall 2006 semester, campus improvements continued to take place with major renovations in Williams Hall, Chapman Hall, Common Grounds coffee shop, first floor Burke, and the Decker Quadrangle. A new student hangout, Jazzman’s, was

added to Benner Library.

During the summer of 2007, the Hardy C. Powers President’s House was renovated to house the Olivet Center for Student Success. A new residence for the president of Olivet was established at Reedy House on Olde Oak Drive. A major renovation of student housing was begun and new classrooms were established on the lower level of Burke Administration Building.

Improvement highlights for 2007–2008 included the expansion and remodeling of Ludwig Dining Hall, the remodeling of Benner Library and Resource Center, and the addition of a recreation center and additional parking to the Olde Oak Apartments.

In 2009 and then following again in 2010 for the fourth and fifth consecutive years, the University was commended for the pursuit of excellence and ongoing Christian witness to the world by the Best Christian Workplaces Institute. Olivet Nazarene University qualified for certification as “A Best Christian Workplace” in the United States.

For six consecutive years, *U.S. News and World Report* selected Olivet Nazarene University as a Top-Tier University-Master’s in its report, “America’s Best Colleges.”

Construction is nearing completion on the Hawkins Centennial Chapel and the Reedy Missionary House has been established.

With the summer of 2010 came more projects, including a major overhaul of the innercampus landscape and walkways along with renovation of the Milby clock tower. Hills Hall was significantly upgraded and the process of sprinkling system installation in residence halls continued.

# DEVELOPMENT OF BUILDINGS AND AREAS OF THE CAMPUS

<b>1906</b>	Burke Administration Building	<b>1982</b>	Hardy C. Powers President's House
<b>1906</b>	Chapman Hall for Men	<b>1983</b>	Decker Quadrangle
<b>1926</b>	Birchard Field House	<b>1984</b>	Mary Scott House for Missionaries
<b>1926</b>	Miller Business Center built as dining hall, remodeled in 1968	<b>1985</b>	Warming House and Ice Rink
<b>1951</b>	Williams Hall for Women	<b>1986</b>	WONU radio tower and new transmitter
<b>1954</b>	College Church of the Nazarene	<b>1987</b>	Gibson-Ide Athletic Service Center
<b>1956</b>	Memorial Library	<b>1987</b>	Gazebo south of McClain Hall
<b>1959</b>	Nesbitt Hall for Women	<b>1988</b>	Marquart House
<b>1962</b>	Hills Hall for Men	<b>1988</b>	Purinton House
<b>1963</b>	Chalfant Auditorium	<b>1988</b>	Tripp Maintenance Center
<b>1963</b>	Burke Administration Building restored after tornado	<b>1990</b>	Leslie Parrott Convocation/ Athletic Center
<b>1966</b>	Ludwig Center	<b>1990</b>	McHie Arena
<b>1966</b>	Reed Hall of Science	<b>1994</b>	Harlow E. Hopkins Alumni Center
<b>1966</b>	Strickler Planetarium	<b>1996</b>	Renovation of Milby Clock Tower
<b>1967</b>	WKOC radio station began broadcasting	<b>1999</b>	Campus Entrance and Admissions Center
<b>1967</b>	McClain Hall for Women, Howe Hall and Gibson Hall	<b>2001</b>	Weber Center
<b>1969</b>	Brodien Power Plant	<b>2002</b>	Larsen renovation Expansion of Gibson-Ide
<b>1970</b>	A. L. Parrott Hall for Women	<b>2003</b>	Acquisition of the Provena Fortin Villa property
<b>1971</b>	Wisner Hall for Nursing Education	<b>2004</b>	Establishment of the Olivet Nazarene University Broadcast/Learning Center, home of Shine.fm, WONU, 89.7
<b>1975</b>	Benner Library and Learning Resource Center		
<b>1977</b>	Entrance Plaza and flags		
<b>1980</b>	Kelley Prayer Chapel		
<b>1982</b>	Snowbarger Athletic Park and Ward Field		
<b>1982</b>	Larsen Fine Arts Center		

	Establishment of the School of Graduate and Adult Studies Chicago Regional Center in Rolling Meadows, Illinois		
<b>2005</b>	Renovation of top three floors of Burke Administration Building	<b>2008</b>	Benner Library remodeling and redecorating; Ludwig Center expansion and remodeling; Olde Oak recreation center and parking lots
<b>2006</b>	Renovation of Williams Hall, Chapman Hall, Common Grounds coffee shop, first floor Burke, and Decker Quadrangle	<b>2009</b>	Construction began on the Hawkins Centennial Chapel  Rev. and Mrs. J. C. Reedy's home at 449 S. Bresee Avenue, Bourbonnais, was donated to Olivet to be used as a place of short-term welcome and rest for missionary families. It is named the Reedy Missionary House.
<b>2007</b>	The Center for Student Success was established in the Hardy C. Powers building. A new residence for the president of the University was created at Reedy House on Olde Oak Drive.	<b>2010</b>	Innercampus beautification Renovation of Hills Hall Renovation of Milby Clock Tower

## DATES TO REMEMBER

### 2010

#### **Back-to-School Events**

Block Party and Ollies Follies  
September 3–4, 11

#### **Jump Start**

#### **New Student Conference**

August 29–31

#### **Fall Revival**

Jim Diehl  
September 19–22

#### **Prime Time at ONU**

September 24

#### **Red Carpet Days**

October 1–2

#### **Fall Break**

October 11–12

#### **Homecoming**

October 29–31

#### **Fall Play**

November 18–20

#### **Messiah**

75th Annual Presentation  
December 3–4

#### **President's Christmas Gathering**

December 9

#### **Sounds of the Season**

December 9–10

#### **Final Day of Classes**

December 17

### 2011

#### **Winter Revival**

January 30–February 2

#### **Winter Break**

February 11

#### **Spring Musical**

February 24–26

#### **Spring Break**

March 7–11

#### **Easter Break**

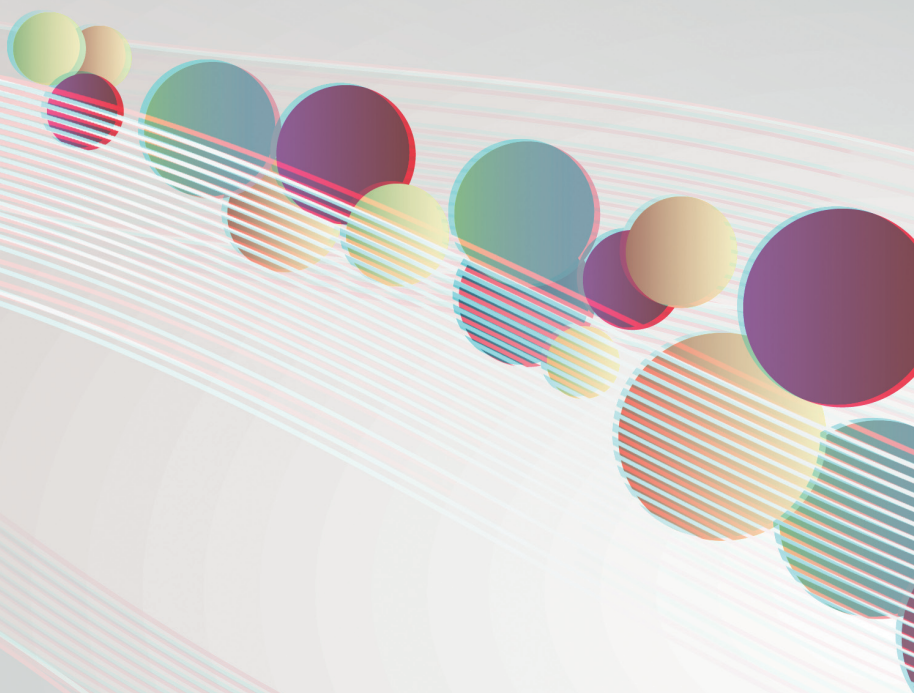
April 22–25

#### **Commencement Weekend**

May 6–7







OLIVET  
NAZARENE  
UNIVERSITY





