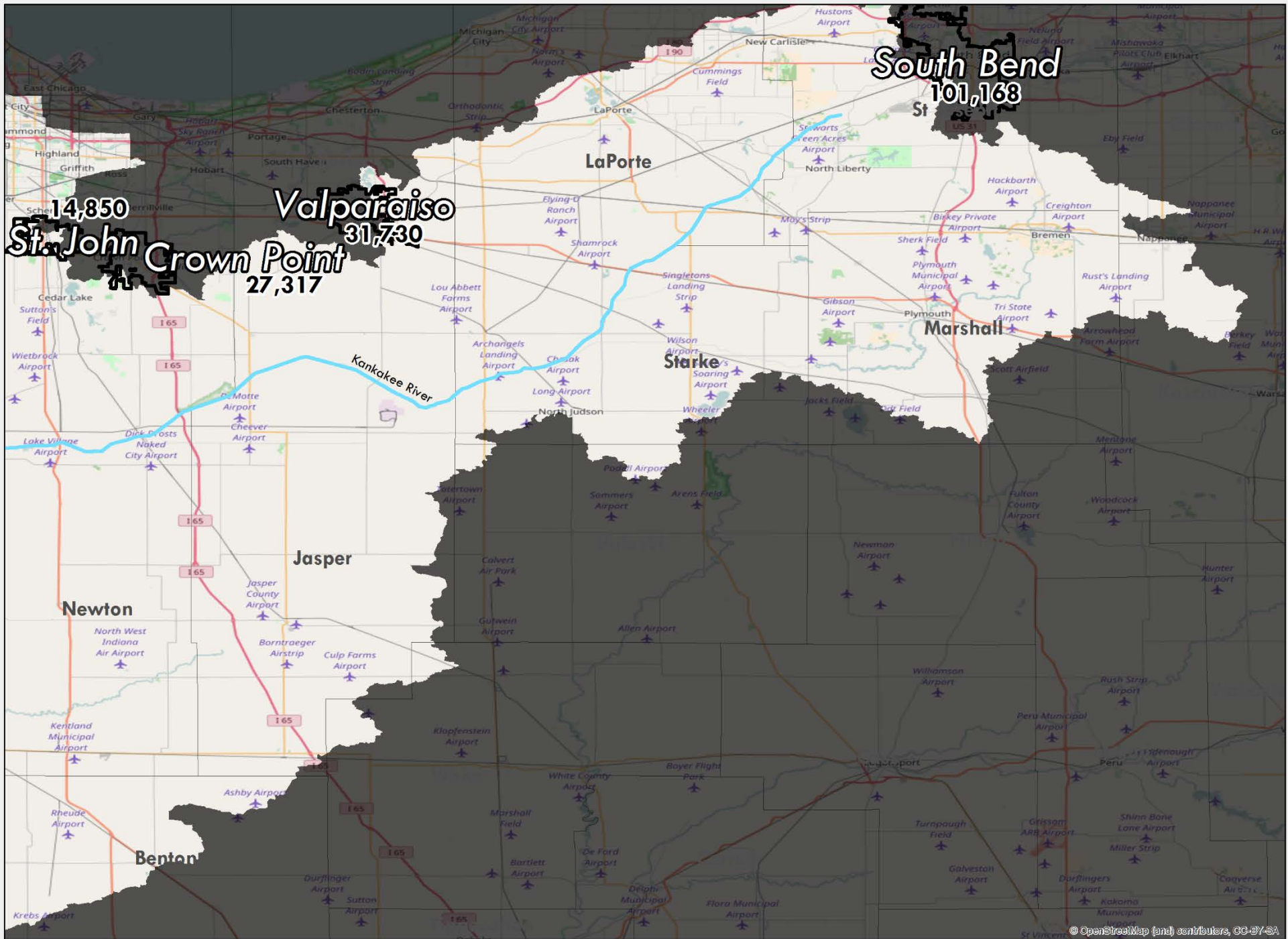
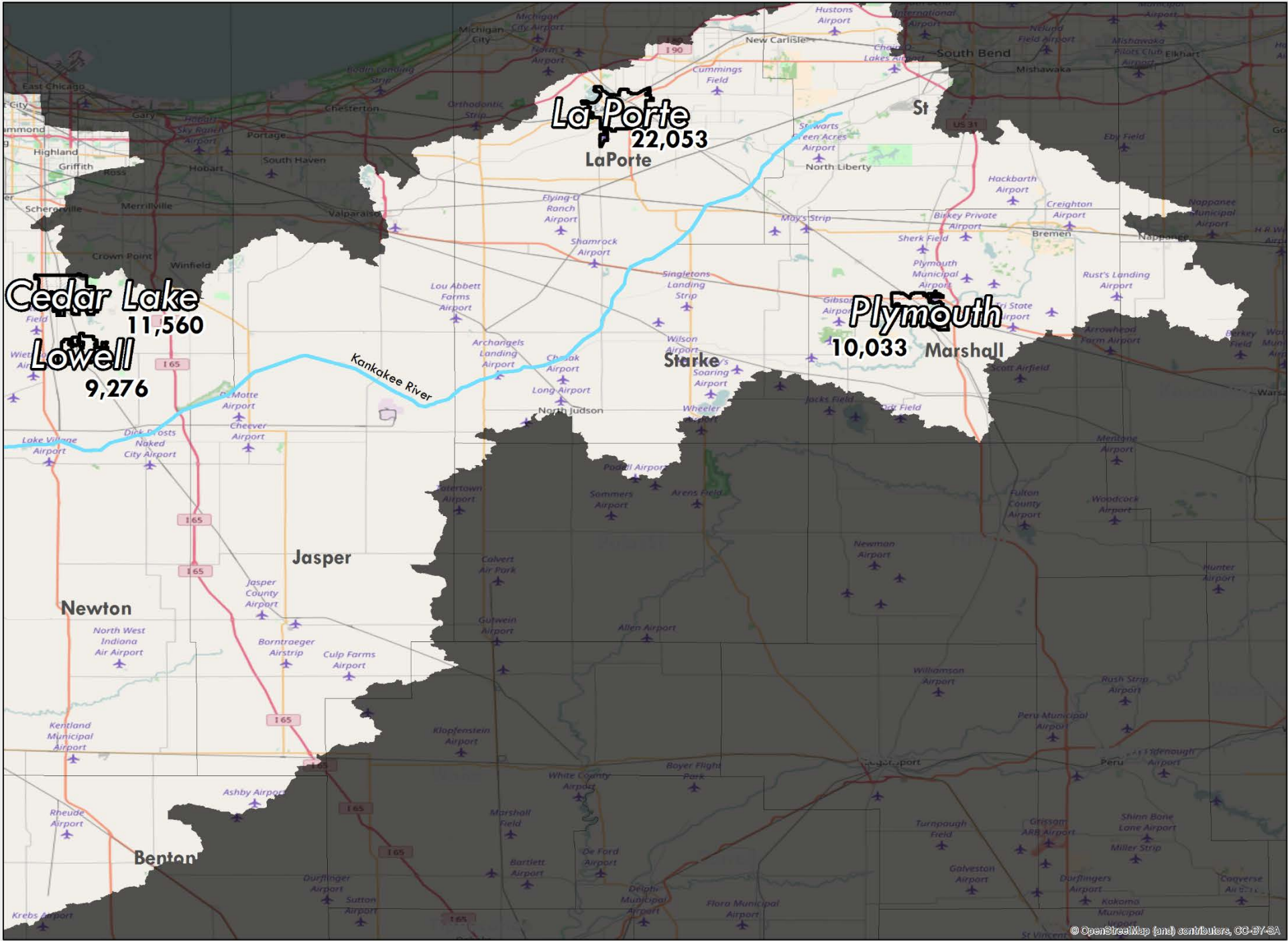


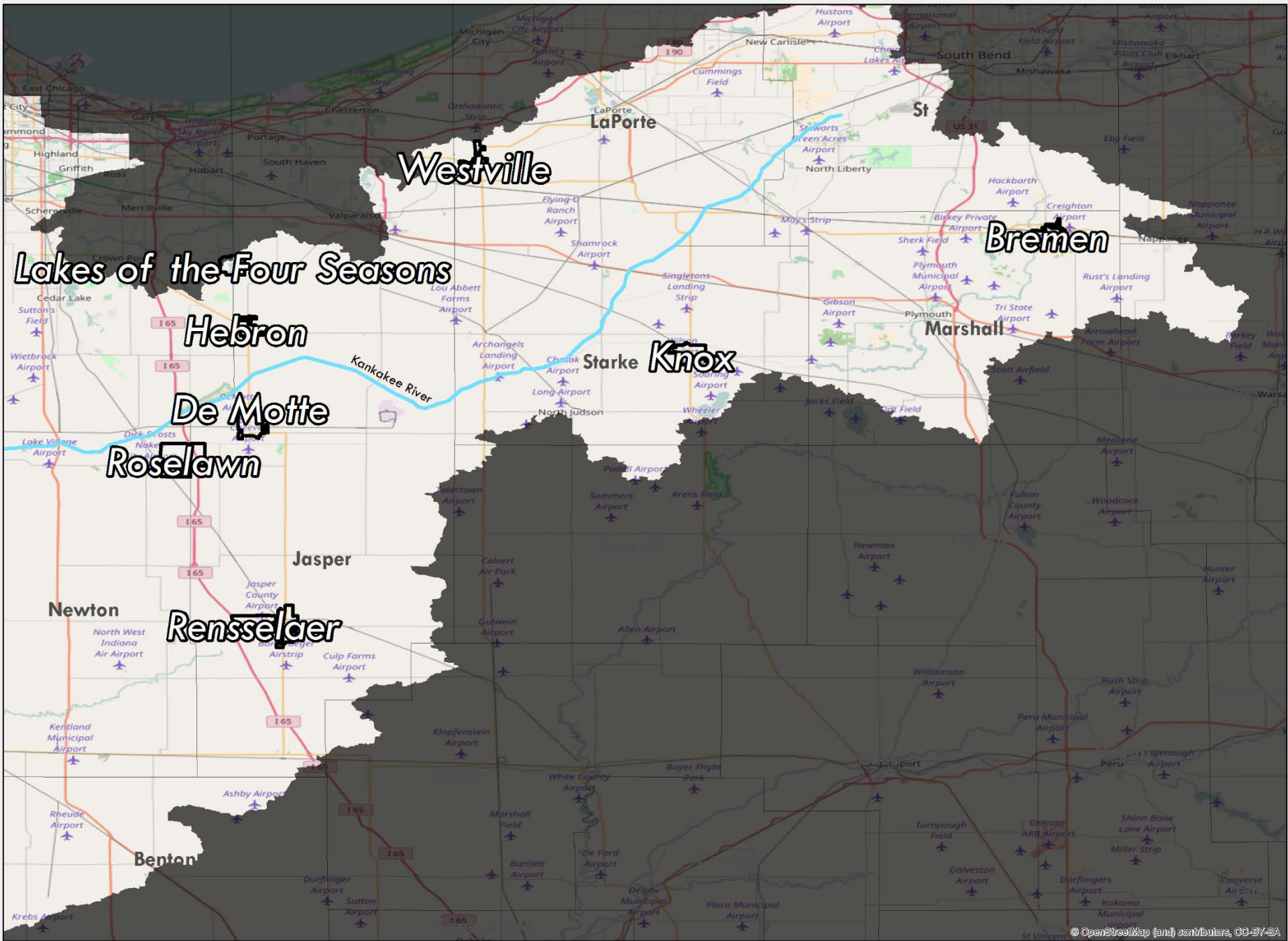
# Current and Future Economic Value of the Kankakee River to Indiana

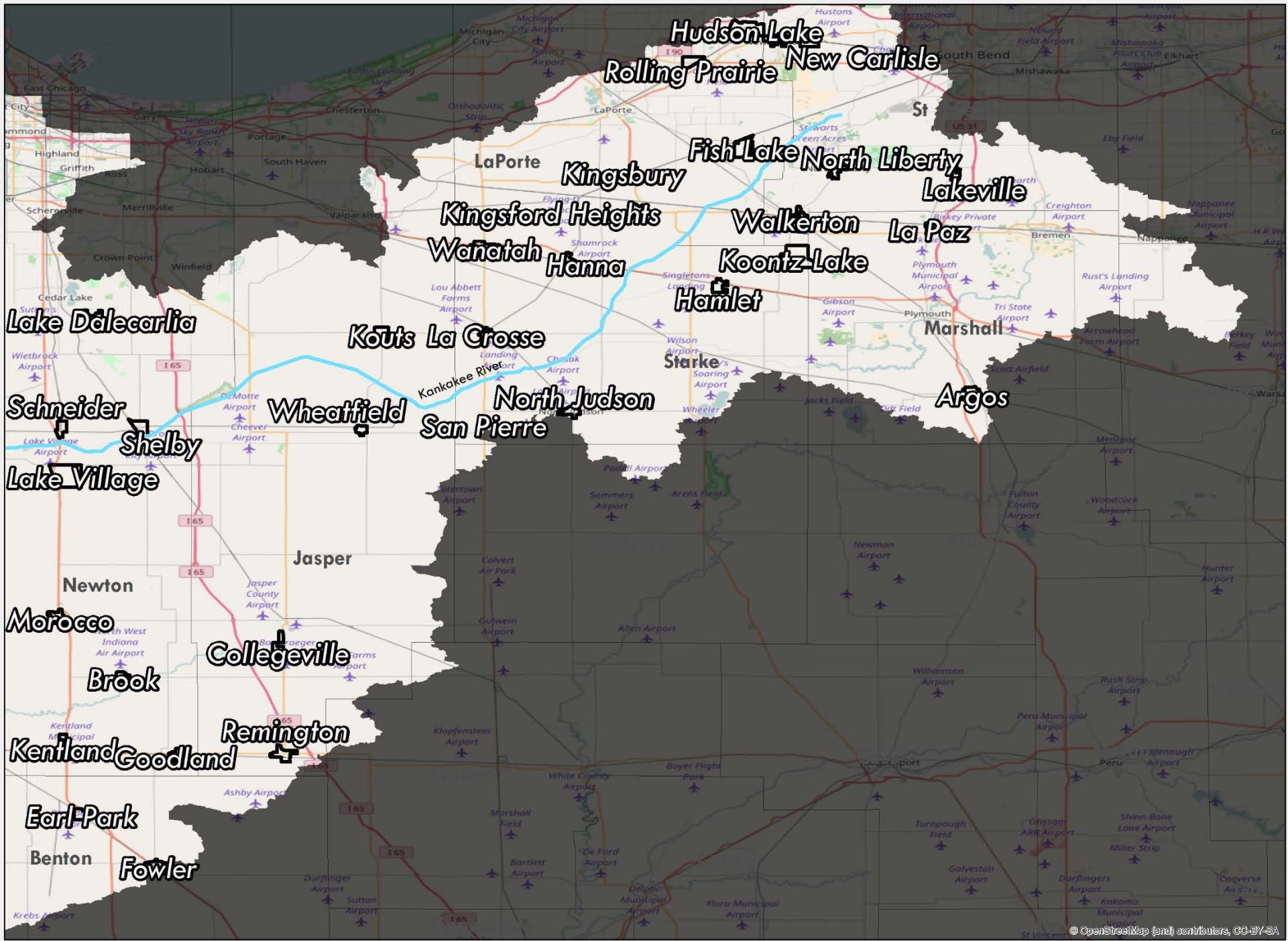
Dr. Derek Bjonback  
Purdue University Northwest  
Westville, Indiana



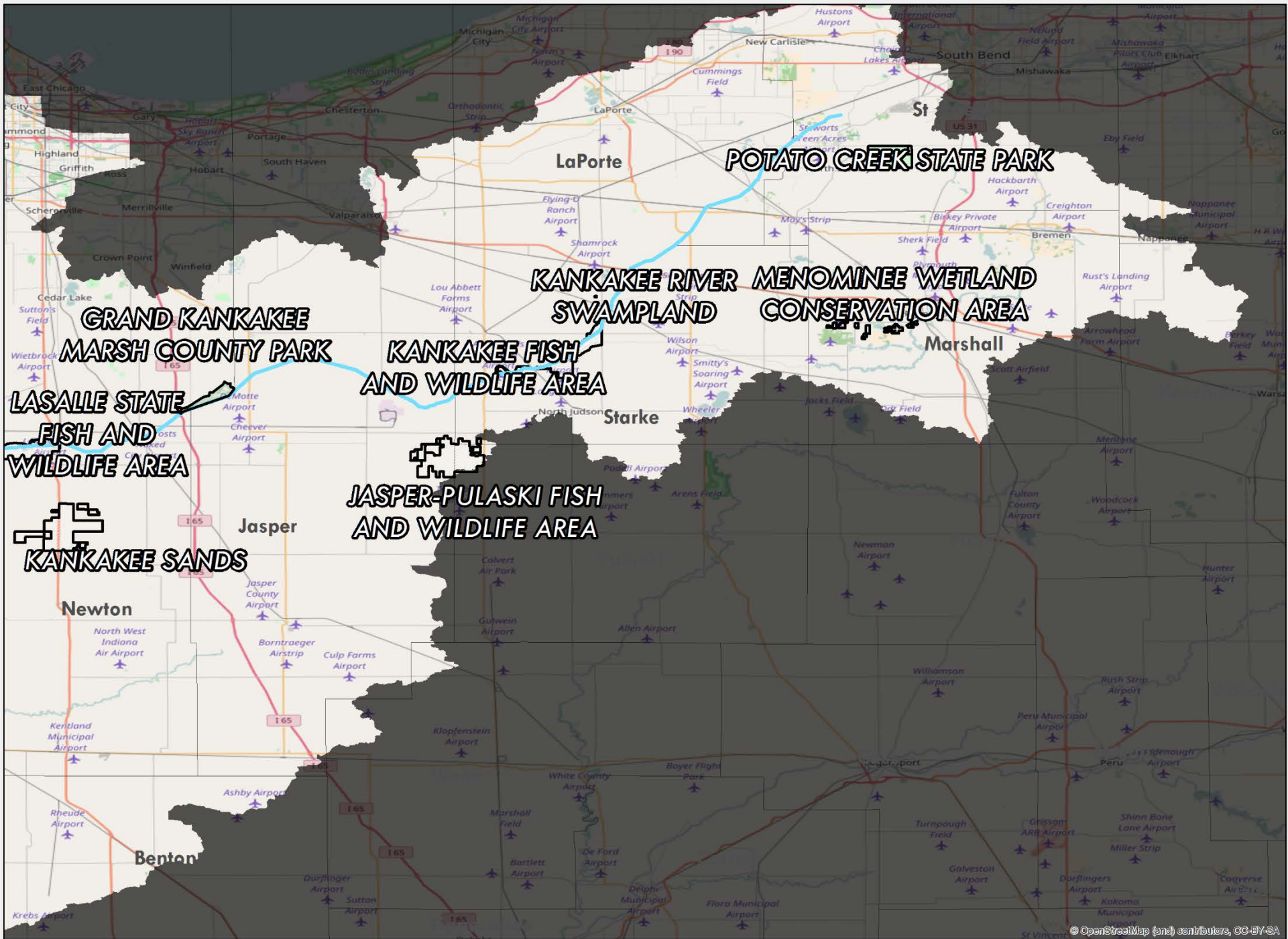












Kankakee Basin in Indiana  
Water Use 1987: 83 million gallons per day

Irrigation	32.0%
Energy Production	25.0%
Public Supply	19.0%
Industrial	6.0%
Domestic Self Supply	13.0%
Livestock	4.0%
Miscellaneous	1.0%

Source: Indiana DNR (1990)

## Drainage and Flooding: Kankakee Basin in Indiana

1.9 million acres  
drained (1988)

\$4.3 million average annual flood  
damages (1988)

Source: Kankakee River Basin  
Commission, Master Plan



Counties in Indiana and Michigan sharing the Kankakee Basin  
(square miles)

County	Total Area	Area in Basin	Area out Basin	Percent in Basin	Percent of Total Basin
Elkhart	466	12	454	2.6%	0.4%
St. Joseph	459	274	163	59.7%	9.2%
Kosciusko	540	51	489	9.4%	1.7%
Marshall	444	324	115	73.0%	10.8%
Berrien MI	568	3	565	0.5%	0.1%
La Porte	600	466	210	77.7%	15.6%
Pulaski	435	20	415	4.6%	0.7%
Starke	309	260	43	84.1%	8.7%
Porter	419	222	197	53.0%	7.4%
Lake	501	237	330	47.3%	7.9%
Jasper	561	536	22	95.5%	17.9%
Newton	402	402	0	100.0%	13.4%
Benton	407	165	211	40.5%	5.5%
White	506	20	486	4.0%	0.7%
Total	6617	2992	3700	45.2%	100.0%

Indiana DNR (1990). Berrien County MI has been estimated

## Major Cities and Towns adjacent to the Kankakee Basin

City/Town	County	2010
		Population
Crown Point	Lake	27,317
Valparaiso	Porter	31,730
South Bend	St. Joseph	101,168
St. John	Lake	14,850

## Larger Cities in the Kankakee Basin (Population 9,000 to 22,000)

City	County	2010
		Population
La Porte	La Porte	22,053
Cedar Lake	Lake	11,560
Plymouth	Marshall	10,033
Lowell	Lake	9,276

Smaller Cities in the Kankakee Basin  
(Population 3,000 to 9,000)

City	County	2010 Population
Renssalaer	Jasper	5,859
Westville	La Porte	5,853
Bremen	Marshall	4,588
Roselawn	Newton/Jasper	4,131
Lake of the Four Seasons	Lake	3,936
DeMotte	Jasper	3,814
Hebron	Porter	3,724
Knox	Starke	3,704
Lake of the Four Seasons	Porter	3,097



Indiana and Michigan Counties within the Kankakee River Basin  
Estimates : In Basin Population

	County	In Basin Population		Total	Percent
	Total	Rural	Urban		Population In Basin
Elkhart	203,474	1,079	0	1,079	0.5%
St. Joseph	268,441	14,422	6,824	21,246	7.9%
Kosciusko	78,620	3,460	0	3,460	4.4%
Marshall	46,857	21,661	16,813	38,474	82.1%
Berrien MI	154,636	268	0	268	0.2%
La Porte	110,884	30,685	33,687	64,372	58.1%
Pulaski	12,889	480	0	480	3.7%
Starke	22,958	15,914	6,263	22,177	96.6%
Porter	167,688	18,436	8,768	27,204	16.2%
Lake	487,865	9,162	27,549	36,711	7.5%
Jasper	33,470	19,854	11,942	31,796	95.0%
Newton	14,008	8,332	5,676	14,008	100.0%
Benton	8,681	1,361	2,608	3,969	45.7%
White	24,293	653	0	653	2.7%
Total	1,634,764	145,766	120,130	265,896	16.3%

Indiana Counties within the Kankakee Basin  
Population 2001 and 2015, and Growth 2001-  
2015

	2001	2015	
Elkhart	184,708	203,474	10.2%
St. Joseph	265,502	268,441	1.1%
Kosciusko	74,211	78,620	5.9%
Marshall	45,434	46,857	3.1%
La Porte	110,077	110,884	0.7%
Pulaski	13,627	12,889	-5.4%
Starke	23,217	22,958	-1.1%
Porter	148,372	167,688	13.0%
Lake	484,454	487,865	0.7%
Jasper	30,470	33,470	9.8%
Newton	14,358	14,008	-2.4%
Benton	9,313	8,681	-6.8%
White	25,351	24,293	-4.2%
Basin	1,429,094	1,480,128	3.6%
Indiana	6,127,760	6,619,680	8.0%
US	284,968,955	321,418,820	12.8%

Indiana Counties within the Kankakee Basin  
Employment 2001 and 2015

	Employment		Growth
	2001	2015	2001-2015
Elkhart	137,490	152,475	10.9%
St. Joseph	158,515	157,640	-0.6%
Kosciusko	43,178	48,125	11.5%
Marshall	24,490	25,444	3.9%
La Porte	58,593	53,548	-8.6%
Pulaski	6,721	6,290	-6.4%
Starke	7,075	7,016	-0.8%
Porter	70,200	79,687	13.5%
Lake	240,000	243,017	1.3%
Jasper	15,946	16,068	0.8%
Newton	5,658	5,068	-10.4%
Benton	4,377	3,910	-10.7%
White	13,579	13,006	-4.2%
Basin	785,822	811,294	3.2%
Indiana	3,588,931	3,808,403	6.1%
US	165,519,200	190,195,400	14.9%



Indiana Counties within the Kankakee Basin  
Earnings Growth 2001 to 2015

	2001-2015 Farm Earnings	2001-2015 Non Farm Earnings	2001-2015 Total Earnings
Elkhart	251.6%	60.5%	61.3%
St. Joseph	-123.6%	41.4%	41.1%
Kosciusko	251.0%	88.1%	91.0%
Marshall	-111.8%	37.6%	36.1%
La Porte	41.0%	23.4%	23.5%
Pulaski	54.9%	39.5%	40.7%
Starke	45.6%	37.6%	38.1%
Porter	-127.3%	49.6%	48.9%
Lake	-186.4%	39.1%	38.9%
Jasper	115.6%	63.9%	66.2%
Newton	128.9%	22.3%	33.6%
Benton	6.3%	11.5%	11.1%
White	42.2%	38.7%	38.8%
Basin	73.2%	46.1%	46.3%
Indiana	23.1%	48.9%	48.7%
USA	58.1%	61.0%	61.0%

Indiana Counties within the Kankakee Basin  
Harvested Cropland 2012 and 2007 (Acres)

	Growth		
	2007	2012	2007-2012
Elkhart	135,521	134,319	-0.9%
St. Joseph	159,930	132,539	-17.1%
Kosciusko	206,358	206,638	0.1%
Marshall	148,289	175,137	18.1%
La Porte	222,693	204,636	-8.1%
Pulaski	203,538	188,768	-7.3%
Starke	118,806	100,401	-15.5%
Porter	101,933	105,999	4.0%
Lake	118,257	122,322	3.4%
Jasper	305,041	250,612	-17.8%
Newton	170,616	169,055	-0.9%
Benton	258,366	244,491	-5.4%
White	296,116	263,641	-11.0%
Basin	2,445,464	2,298,558	-6.0%
Indiana	12,108,940	12,146,538	0.3%

Indiana Counties within the Kankakee Basin  
Irrigated Cropland 2012 and 2007 (Acres)

			Growth
	2007	2012	2007-2012
Elkhart	22,028	25,521	15.9%
St. Joseph	25,010	27,580	10.3%
Kosciusko	27,977	17,977	-35.7%
Marshall	8,606	13,424	56.0%
La Porte	47,849	54,378	13.6%
Pulaski	19,978	18,474	-7.5%
Starke	17,299	25,597	48.0%
Porter	8,857	10,038	13.3%
Lake	9,684	8,108	-16.3%
Jasper	22,581	21,052	-6.8%
Newton	5,735	6,458	12.6%
Benton	4,046	4,046	0.0%
White	3,369	4,230	25.6%
Basin	223,019	236,883	6.2%
Indiana	397,113	437,415	10.1%



Summary Comments: Indiana Kankakee Basin Economy

Rural/Small Town Orientation

Slow Growth with some exceptions

Agriculture is a key player

Potential for Water Based Recreation, Trail-based, and Agri-Tourism