

Olivet Nazarene University

Digital Commons @ Olivet

The Kankakee Daily Journal

University Archives

2-4-1959

February 04, 1959 (Wednesday) Kankakee Daily Journal

Kankakee Daily Journal

Follow this and additional works at: <https://digitalcommons.olivet.edu/dj>

Recommended Citation

Kankakee Daily Journal, "February 04, 1959 (Wednesday) Kankakee Daily Journal" (1959). *The Kankakee Daily Journal*. 1403.

<https://digitalcommons.olivet.edu/dj/1403>

This News Article is brought to you for free and open access by the University Archives at Digital Commons @ Olivet. It has been accepted for inclusion in The Kankakee Daily Journal by an authorized administrator of Digital Commons @ Olivet. For more information, please contact digitalcommons@olivet.edu.



JOANNE JANSSEN

Select Top Students At Buckley-Loda High

BUCKLEY (JNS) — Three honor winners have been named at Buckley-Loda High School.

Braceville Youth Involved In 2 Accidents Here

A 17-year-old driver from Braceville was involved in a minor accident in Kankakee this morning.

Damage to vehicles in both collisions was minor.

Kankakee Police Officer Vaughn Johnson, who investigated this morning's collision, had the vehicle owned by Mrs. Housman towed away as being unfit to be driven.

William Caron, about 72, 224 W. Station St., died Monday in St. Mary's Hospital, following a short illness.

Funeral services will be Thursday at 9:30 a.m. in St. Rose Church. Interment will be in Mt. Calvary Cemetery. Friends may call at Hickey Funeral Home from this evening to time of services.

William Caron Funeral Thursday

Funeral services will be Thursday at 9:30 a.m. in St. Rose Church. Interment will be in Mt. Calvary Cemetery. Friends may call at Hickey Funeral Home from this evening to time of services.

3 Bourbonnais Residents File For Trustees

Three Bourbonnais residents filed petitions Tuesday night as candidates for village trustees.

Adult Girl Scouts Hold Fly-Up Orientation

Fly-Up orientation was held at the Tuesday meeting of East-Kankakee Neighborhood adult Girl Scouts.

Program check lists should be returned before March 1.

Adults should register two weeks in advance with Mrs. Edward Snyder.

Mrs. Fred Carstensen, Day Camp chairman, announced that day

Free Trips! GASOLINE AND OIL FURNISHED ...DELIVER NEW CARS... READY TO LEAVE SOON

Round Trips New York, North Carolina, Texas, Long Island, New York.

Register now for the trip you would like, as deliveries are coming up soon for all parts of the United States.

For Information Call C. V. MARTIN
Kankakee Auto Leasing
342 North Schuyler Ave. Phone: WE 3-3375

Tells Lions How RFE Aids Nations

"The purpose of Radio Free Europe is to contribute to the achievement of ultimate freedom and democracy by the people behind the iron curtain."

These words, quoted by RFE director were directed at the Kankakee Lions Club Tuesday noon

Joanne Janssen, daughter of Mr. and Mrs. Wilbert Janssen, is the salutatorian of the senior class with an average of 4.89.

Merrill Kaufmann, son of Mr. and Mrs. Leo Kaufmann, was selected as SAR Good Citizenship award winner.

Miss Kaufmann had an average of 4.86 through the first semester of her senior year.

Ernest S. Berns, 27, 1015 Justice Dr.

The accident occurred about 7:30 a.m. at Poplar Ave. and Sheridan St.

First of the two accidents was Tuesday at 7:55 a.m. at Poplar Ave. and Eagle St.

Damage to vehicles in both collisions was minor.

Kankakee Police Officer Vaughn Johnson, who investigated this morning's collision, had the vehicle owned by Mrs. Housman towed away as being unfit to be driven.

William Caron, about 72, 224 W. Station St., died Monday in St. Mary's Hospital, following a short illness.

Funeral services will be Thursday at 9:30 a.m. in St. Rose Church. Interment will be in Mt. Calvary Cemetery. Friends may call at Hickey Funeral Home from this evening to time of services.

Funeral services will be Thursday at 9:30 a.m. in St. Rose Church. Interment will be in Mt. Calvary Cemetery. Friends may call at Hickey Funeral Home from this evening to time of services.

3 Bourbonnais Residents File For Trustees

Three Bourbonnais residents filed petitions Tuesday night as candidates for village trustees.

Seeking election on the Citizen's ticket are Albert Lafine Jr., 418 W. River St., incumbent; Dr. Carl S. McClain of 111 N. Convent Ave., a former board member; and Francis (Dyke) Jordan of 485 E. Beaudoin St.

Cyril Coyne, one of three trustees whose terms expire in April, said this morning he has not made a decision as yet whether to run or not.

Final date for filing petitions for the April 21 election is March 2. The last day to withdraw petitions is March 7.

Camp will be held June 22-27 at Kankakee River State Park.

Leaders are advised to make preparations for Girl Scout Sunday observance March 8.

Mrs. Thometz presented and announced that Mrs. Clifford Schultz will show slides April 7, taken when she was with a survival unit last year.

Mrs. Fred Carstensen, Day Camp chairman, announced that day

Mrs. Fred Carstensen, Day Camp chairman, announced that day

Mrs. Fred Carstensen, Day Camp chairman, announced that day

Illinois Assembly Gets School Fire Safety Bill

SPRINGFIELD (UPI) — Nearly every grade and high school in Illinois would have to be equipped with a sprinkler system and enclosed stairways as a safeguard against fire under a bill before the Legislature.

Author-Musician To Appear Here

Phil Kerr, author-musician, will appear on two programs in Kankakee this weekend.

Kerr will appear at 8 p.m. Friday in a special program at Calvary Bible Church, according to the Rev. Clinton C. Marlow.

His second appearance will be at 7:30 p.m. Saturday at West Junior High School.

On the 1,200-person staff of Radio Free Europe, only 100 are American-born.

During his program here, he will sing and play many of his own compositions, interspersing the music with stories of how famous hymns were written.

St. Martin's Holy Name Society To Sponsor Party

The Holy Name Society of St. Martin's Church will sponsor its annual fish fry and tag party Friday evening in the Carmel Room of the Knights of Columbus building.

Serving will begin at 6:30 p.m. and continue through the evening.

Members of the society will receive communion in a group Sunday at the 8:30 o'clock mass.

A financial report read by treasurer Henry Eden showed the Lions Little League had a deficit of \$387.64 last year.

The deficit was made up out of a balance of \$64.06 which the league had at the beginning of the year.

On Thursday at 2 p.m., the Ladies Aid Society will meet in St. John's Parish Hall for an installation of officers.

A chill - oyster supper will be served by the Ladies Aid Society at 4:30 p.m.

The Waterbury League held a skating party Monday night in Paxton.

On Thursday at 2 p.m., the Ladies Aid Society will meet in St. John's Parish Hall for an installation of officers.

A chill - oyster supper will be served by the Ladies Aid Society at 4:30 p.m.

The Waterbury League held a skating party Monday night in Paxton.

On Thursday at 2 p.m., the Ladies Aid Society will meet in St. John's Parish Hall for an installation of officers.

A chill - oyster supper will be served by the Ladies Aid Society at 4:30 p.m.

The Waterbury League held a skating party Monday night in Paxton.

On Thursday at 2 p.m., the Ladies Aid Society will meet in St. John's Parish Hall for an installation of officers.

A chill - oyster supper will be served by the Ladies Aid Society at 4:30 p.m.

The Waterbury League held a skating party Monday night in Paxton.

the executive branch of the state government by abolishing or merging seven present departments and creating three new ones—transportation, labor and industry and natural resources.

Abolished or merged would be Aeronautics, Conservation, Labor, Mines and Minerals, Personnel, Public Works and Registration and Education.

Other bills introduced in the Senate would:

Regulate installment sales and financing of automobiles, banning contracts which had blank spaces to be filled in after the contract was signed.

Make it a misdemeanor to transmit false warnings of concealed bombs such as have disrupted many schools recently.

Approximate two million dollars for a state school for the mentally retarded in St. Clair County.

Also introduced in the Senate were the first bills in Gov. Stratton's program to reorganize

the executive branch of the state government by abolishing or merging seven present departments and creating three new ones—transportation, labor and industry and natural resources.

Abolished or merged would be Aeronautics, Conservation, Labor, Mines and Minerals, Personnel, Public Works and Registration and Education.

Other bills introduced in the Senate would:

Regulate installment sales and financing of automobiles, banning contracts which had blank spaces to be filled in after the contract was signed.

Make it a misdemeanor to transmit false warnings of concealed bombs such as have disrupted many schools recently.

Approximate two million dollars for a state school for the mentally retarded in St. Clair County.

Also introduced in the Senate were the first bills in Gov. Stratton's program to reorganize

the executive branch of the state government by abolishing or merging seven present departments and creating three new ones—transportation, labor and industry and natural resources.

Abolished or merged would be Aeronautics, Conservation, Labor, Mines and Minerals, Personnel, Public Works and Registration and Education.

Other bills introduced in the Senate would:

Regulate installment sales and financing of automobiles, banning contracts which had blank spaces to be filled in after the contract was signed.

Make it a misdemeanor to transmit false warnings of concealed bombs such as have disrupted many schools recently.

Approximate two million dollars for a state school for the mentally retarded in St. Clair County.

Also introduced in the Senate were the first bills in Gov. Stratton's program to reorganize

the executive branch of the state government by abolishing or merging seven present departments and creating three new ones—transportation, labor and industry and natural resources.

Abolished or merged would be Aeronautics, Conservation, Labor, Mines and Minerals, Personnel, Public Works and Registration and Education.

Other bills introduced in the Senate would:

Regulate installment sales and financing of automobiles, banning contracts which had blank spaces to be filled in after the contract was signed.

Make it a misdemeanor to transmit false warnings of concealed bombs such as have disrupted many schools recently.



BUSY FURNACES in Kankakeeland are keeping cargo trucks going at a fast pace to bring in new supplies of all types of fuel. Above are shown some tankers taking on propane gas and fuel oil at a bulk plant northwest of Kankakee. A steady stream of trucks is pulling up to the pumps constantly to meet the demands this cold winter has imposed. (Journal photo)

Fuel Bills Pile Up As Cold Weather Continues

Is your pocketbook a little thinner this winter compared to previous years? You can probably blame the weather.

During the past three months cold weather has become very common in Kankakeeland. As a consequence fuel bills this winter, compared to like periods in past winters, have increased considerably.

No exact figure as to per cent of increase in bills is available from gas, fuel oil and coal dealers, but a short telephone survey by the Journal obtained estimates on increased sales volumes.

Highest percentage increase added sales this winter is reported by fuel oil dealers, who report their volume up 10 to 15 per cent.

NATURAL GAS and bottle gas sales have gone up from 9 to 12 per cent.

Coal users have purchased from 8 to 7 per cent more fuel this winter, the reports indicated.

There are no figures for company purposes available for electric heating in the Kankakee area. Public Service Co. in this area

As one local resident put it, "In past winters when the temperature got down to 10 degrees everyone thought they were freezing. This winter 10 above day is considered a nice, mild day."

Among the recent subjects, listeners have offered sound suggestions on how to improve fire safety measures in Kankakee area schools, a solid vote against a proposal to change the name of Schuyler avenue, approval of the present "no turn" signs at Court St. and Schuyler Ave., and a plea for further changes in traffic regulations so that residents may become familiar with the present set.

Listeners HAVE asked for - and promptly received - advice from other callers on such matters as how to remove stains and rust spots from all sorts of furnishings, how to repair a feather in a hat smashed when a car door slammed on it, and a varied assortment of unusual recipes. What one woman doesn't know, another one seems to have the answer.

Calls are received from all sections of Kankakee County and occasionally toll calls come in from surrounding areas. The housewives frequently remind each other to feed the birds on cold, wintry days, and one Samaritan called on a below-zero day to offer suits of underwear free to any needy traveler.

Readers of the Daily Journal, as well as listeners, are invited to submit questions they would like to hear discussed.

Among the recent subjects, listeners have offered sound suggestions on how to improve fire safety measures in Kankakee area schools, a solid vote against a proposal to change the name of Schuyler avenue, approval of the present "no turn" signs at Court St. and Schuyler Ave., and a plea for further changes in traffic regulations so that residents may become familiar with the present set.

Listeners HAVE asked for - and promptly received - advice from other callers on such matters as how to remove stains and rust spots from all sorts of furnishings, how to repair a feather in a hat smashed when a car door slammed on it, and a varied assortment of unusual recipes. What one woman doesn't know, another one seems to have the answer.

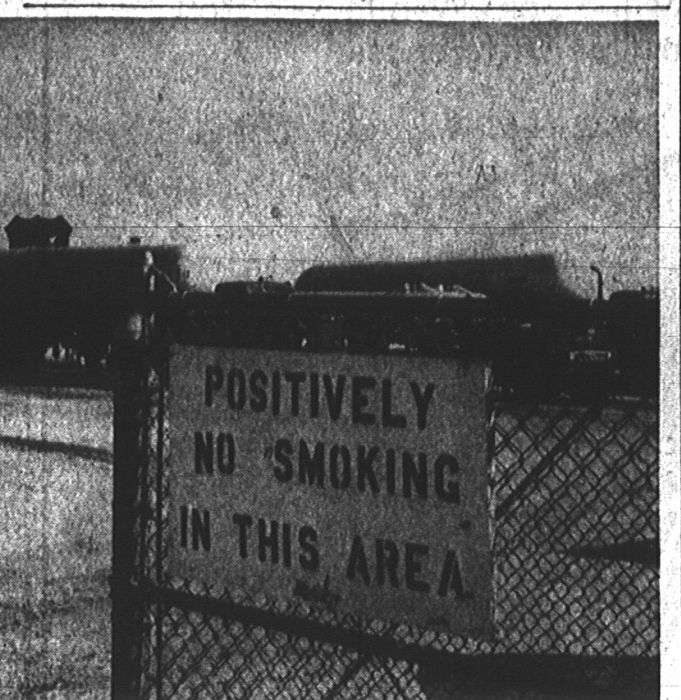
Calls are received from all sections of Kankakee County and occasionally toll calls come in from surrounding areas. The housewives frequently remind each other to feed the birds on cold, wintry days, and one Samaritan called on a below-zero day to offer suits of underwear free to any needy traveler.

Readers of the Daily Journal, as well as listeners, are invited to submit questions they would like to hear discussed.

Among the recent subjects, listeners have offered sound suggestions on how to improve fire safety measures in Kankakee area schools, a solid vote against a proposal to change the name of Schuyler avenue, approval of the present "no turn" signs at Court St. and Schuyler Ave., and a plea for further changes in traffic regulations so that residents may become familiar with the present set.

Listeners HAVE asked for - and promptly received - advice from other callers on such matters as how to remove stains and rust spots from all sorts of furnishings, how to repair a feather in a hat smashed when a car door slammed on it, and a varied assortment of unusual recipes. What one woman doesn't know, another one seems to have the answer.

Calls are received from all sections of Kankakee County and occasionally toll calls come in from surrounding areas. The housewives frequently remind each other to feed the birds on cold, wintry days, and one Samaritan called on a below-zero day to offer suits of underwear free to any needy traveler.



BUSY FURNACES in Kankakeeland are keeping cargo trucks going at a fast pace to bring in new supplies of all types of fuel. Above are shown some tankers taking on propane gas and fuel oil at a bulk plant northwest of Kankakee. A steady stream of trucks is pulling up to the pumps constantly to meet the demands this cold winter has imposed. (Journal photo)

Caroline Korner, Dwight, Dies; Funeral Friday

DWIGHT (JNS)—Miss Caroline Korner, 67, 235 E. Waupesa St., died at 5 a.m. today in St. James Hospital, Pontiac, where she had been a patient eight days.

The body is in the Baker Funeral Home where friends may call after 2 p.m. Thursday. Funeral services will be Friday at 1:30 p.m. in the funeral home and at 2 p.m. in Zion Evangelical United Brethren Church.

Her parents and a brother preceded her in death. She is survived by nieces, nephews and cousins.

Miss Korner was a member of the Zion Evangelical United Brethren Church and of the Veterans of Foreign Wars Auxiliary.

Miss Korner was born Dec. 5, 1891, on a farm in Nevada Township southwest of Dwight, the daughter of Mr. and Mrs. George Korner. She lived there until moving into Dwight in 1949.

Her parents and a brother preceded her in death. She is survived by nieces, nephews and cousins.

Miss Korner was a member of the Zion Evangelical United Brethren Church and of the Veterans of Foreign Wars Auxiliary.

Miss Korner was born Dec. 5, 1891, on a farm in Nevada Township southwest of Dwight, the daughter of Mr. and Mrs. George Korner. She lived there until moving into Dwight in 1949.

Her parents and a brother preceded her in death. She is survived by nieces, nephews and cousins.

Miss Korner was a member of the Zion Evangelical United Brethren Church and of the Veterans of Foreign Wars Auxiliary.

Miss Korner was born Dec. 5, 1891, on a farm in Nevada Township southwest of Dwight, the daughter of Mr. and Mrs. George Korner. She lived there until moving into Dwight in 1949.

Her parents and a brother preceded her in death. She is survived by nieces, nephews and cousins.

Miss Korner was a member of the Zion Evangelical United Brethren Church and of the Veterans of Foreign Wars Auxiliary.

Miss Korner was born Dec. 5, 1891, on a farm in Nevada Township southwest of Dwight, the daughter of Mr. and Mrs. George Korner. She lived there until moving into Dwight in 1949.

Her parents and a brother preceded her in death. She is survived by nieces, nephews and cousins.

Miss Korner was a member of the Zion Evangelical United Brethren Church and of the Veterans of Foreign Wars Auxiliary.

Miss Korner was born Dec. 5, 1891, on a farm in Nevada Township southwest of Dwight, the daughter of Mr. and Mrs. George Korner. She lived there until moving into Dwight in 1949.

Her parents and a brother preceded her in death. She is survived by nieces, nephews and cousins.

Miss Korner was a member of the Zion Evangelical United Brethren Church and of the Veterans of Foreign Wars Auxiliary.

ICE or SNOW... RAIN or SLEET at Lang Buick

The Car is 129% Hot!

We've never seen anything like it in our 22 years in the automobile business. People right here in Kankakeeland are buying the '59 BUICK at a record clip. In fact, our sales are up 129% over this time last year. Why don't you come in and see for yourself why so many people say THE car: BUICK '59 is THE smart buy, and learn the facts and figures that prove Buick '59 is within your reach and within the reach of 2 out of 3 new car buyers!



We've got the Cars! We've got the Price!

AND WE'RE SELLING THEM!

4-DOOR
LeSABRE \$2796
HEATER AND DEFROSTER — TWIN TURBINE TRANSMISSION
PLUS all the many EXTRAS that are built into Buick as STANDARD Equipment

LANG BUICK

148 North Harrison Avenue Kankakee, Illinois
OPEN EVENINGS

EXPLORING

..... a program for High School aged young men. Created by the Boy Scouts of America.

BOY SCOUT WEEK

FEBRUARY 7TH TO 13TH
49TH ANNIVERSARY

BOY SCOUTS OF AMERICA

Sponsored by DANDELLES RECREATION

Arrest Texan Near Sheldon

WATSEKA (JNS) — Albert J. King, Dallas, Tex., was bound over to County Court Tuesday on a charge of vagrancy.

King was arrested Monday night east of Sheldon by sheriff's officers and appeared before Leslie Strickler, police magistrate.

GOOD STEER for car buyers!

Financing your new car at the 1st Trust Bank may save you \$100.00 or more. A low-cost Bank Auto Loan can help you stretch your family car dollars farther. Talk to one of our friendly 1st Trust Loan Officers and learn how a Bank Auto Loan can be quickly and economically obtained without red tape and delay.

1st TRUST BANK

Personal • Auto • Improvement Loans
133 South Dearborn Avenue
Free Parking—WE 9-2551

VISIT OUR NEW, ENLARGED INSTALLMENT LOAN DEPT. . . S. DEARBORN

60th Anniversary Weekly Special

3 Days Sale
Every Week — A Giant Super-Value

Kresge's

SAVE 18% Reg. 69¢ lb!
Tempting Chocolate-Covered

BRIDGE MIX

60th Anniversary Price
51¢ lb.

Bite-Size for Snacks, Parties, TV Nibbles!
Creamy milk or dark chocolate dipped, filled with cream, jellies, nuts and fruit. Exciting variety...

EVERY WEEK — MAKE A SPECIAL ANNIVERSARY SAVING
OPEN FRIDAY NIGHTS TILL 9:00
CORNOR COURT AND SCHUYLER
Celebrating KRESGE'S 60th Anniversary

The Journal's Page Of Opinion

Communist Goal Still The Same

Most folks of mature years learned long ago that the absolute goal of the modern-day rulers of Russia is to spread the tenets of international communism throughout every corner of the world.

Lenin outlined the basic strategy in 1914 when he decreed that the policy should be one of organizing the proletariat for revolutionary attacks on capitalist governments.

There are many well-informed Americans who sincerely believe that through friendship and a cooperative attitude we may be able to convert the Russian doctrinaires to our way of life.

Peace-loving people that we are, we grasp at any indication that the Russian goal of world domination has changed.

It hasn't. The names may change under the guidance of Lenin, Stalin and Khrushchev but the aim hasn't. It's still world communism, by whatever means will produce results.

More people should have heard Walter H. Judd, Minnesota congressman, in his speech at Olivet College Monday night.

Rep. Judd spoke out against the admission of Red China to the United Nations and the advocates of free trade with Russia. He emphasized the following facts of world politics today:

At least, that must be our hope. There has been a steady advance from the 1930's on in the speed of commercial aircraft bearing airmail. We went from the old Ford trimotors to the twin-engined jobs to four-engined ships, and now it's jets.

But you can tap many a regular user

Communism is dedicated with selfless devotion to the idea of world domination and the United States is the only country that stands in the way of that goal.

The United States has to resist, thus the Cold War. "The only other alternatives are surrender or a hot war."

The Cold War cannot continue forever. We would eventually go bankrupt while the Communists can "take it out of the hides of their people."

We can't call off the Cold War by appeasement. This was proved at the Yalta, Potsdam and Geneva conferences.

Rep. Judd called for a firm stand against the Russians. He said that every time the U.S. has shown force—at Quemoy, during the Berlin airlift, in Lebanon—the Kremlin has growled, threatened and backed off.

The U.S. may have to lower its living standards to win the Cold War, the congressman said, suggesting that our most valuable allies may be in the captive countries behind the Iron Curtain.

There wasn't any simple solution offered. But his speech bluntly reminded us that the Communist conspiracy is still world domination. The U.S. and its allies are obstacles in the path of Communist victory.

Progress On The Postal Front

A lot of Americans are heartened to hear from Postmaster General Arthur Summerfield that we may soon be transmitting mail by rocket.

This means, of course, that immortal phrases like "having fine time" will go hurtling at record speed from joyous vacationers to languishing home towners.

At least, that must be our hope. There has been a steady advance from the 1930's on in the speed of commercial aircraft bearing airmail. We went from the old Ford trimotors to the twin-engined jobs to four-engined ships, and now it's jets.

But you can tap many a regular user

of the airmail and you'll find him disappointed at the results of all this.

We know one fellow who often sent an airmail special delivery letter from Tucson, Ariz., to Chicago back in the mid-1930's. If mailed by early afternoon it always reached its goal by 8 a.m. next day.

Here we are, two and a half decades later, with great air advances. Yet you can pick a number of points separated by less than a third the distance from Tucson to Chicago and find that dependable overnight airmail special delivery is nonexistent.

Yes, the rockets will be welcome in many quarters.

Cooperation Is Big Need Now

The first step toward the formation of a top-level planning council of labor and management was taken in the \$50 billion building industry last week. If successful, it would be the first of its kind in any major industry in the country.

Heads of the largest associations of contractors met with the presidents of most of the eighteen building trade unions prior to the convention of the building trades department of the AFL-CIO at Miami Beach. They decided to work together to expand public and private building, increase job opportunities and lower construction costs.

The public welcomes such cooperation if it will bring building costs down to the lowest level consistent with quality and safety. Pricing of building has become so high, that the industry wisely is attacking costs through cooperation. There is a huge potential market for housing. If costs can be brought under control, public response will expand building and make jobs fast.

Many persons have the mistaken belief that typhoid fever no longer is a danger. Well, it shouldn't be a danger, but it is.

Typhoid fever is a serious infectious disease; one which modern science can prevent and control. We know its cause, we know how it is transmitted and we know how to prevent it. Yet throughout the country many cases occur.

Certainly in the face of facts, we can't afford to relax and consider typhoid as another disease which has been wiped forever.

Typhoid fever is caused by the germ typhoid bacillus which enters the body through the mouth. It ranges from very severe cases (about 10 per cent of the total) to extremely mild "walking typhoid" in which the victim doesn't even know he has been stricken.

It takes about 10 to 14 days after the germ has entered the body before symptoms appear. First indication that something is wrong is usually a feeling of being tired and worn out.

This, generally, is followed by loss of appetite, dull headache, dizziness or constipation and a steadily rising fever. Along about the seventh day a rose-colored rash may appear on the abdomen and chest. The fever probably will continue for from two to four weeks.

Even moderate cases cause a good deal of suffering and are apt to leave the victim in a weak condition for some time after recovery.

As a matter of fact, the death rate of typhoid fever victims for

as long as three years after recovery is about twice that for others in the same age group.

While normally a warm weather disease, typhoid can be contracted from impure milk at any time of the year and, from water, especially during cold weather.

Other spreaders of typhoid include insects, particularly the house fly, and shellfish, especially oysters.

Three injections of typhoid fever vaccine, which can be given by any physician, will protect you from the disease. Even if you are already have been infected, it probably will ease the disease, prevent it from returning at any time of the year and, from water, especially during cold weather.

While normally a warm weather disease, typhoid can be contracted from impure milk at any time of the year and, from water, especially during cold weather.

Other spreaders of typhoid include insects, particularly the house fly, and shellfish, especially oysters.

Three injections of typhoid fever vaccine, which can be given by any physician, will protect you from the disease. Even if you are already have been infected, it probably will ease the disease, prevent it from returning at any time of the year and, from water, especially during cold weather.

While normally a warm weather disease, typhoid can be contracted from impure milk at any time of the year and, from water, especially during cold weather.

Other spreaders of typhoid include insects, particularly the house fly, and shellfish, especially oysters.

Three injections of typhoid fever vaccine, which can be given by any physician, will protect you from the disease. Even if you are already have been infected, it probably will ease the disease, prevent it from returning at any time of the year and, from water, especially during cold weather.

While normally a warm weather disease, typhoid can be contracted from impure milk at any time of the year and, from water, especially during cold weather.

Other spreaders of typhoid include insects, particularly the house fly, and shellfish, especially oysters.

By H. N. Bundesen, M. D.

Typhoid Still A Threat

Many persons have the mistaken belief that typhoid fever no longer is a danger. Well, it shouldn't be a danger, but it is.

Typhoid fever is a serious infectious disease; one which modern science can prevent and control. We know its cause, we know how it is transmitted and we know how to prevent it. Yet throughout the country many cases occur.

Certainly in the face of facts, we can't afford to relax and consider typhoid as another disease which has been wiped forever.

Typhoid fever is caused by the germ typhoid bacillus which enters the body through the mouth. It ranges from very severe cases (about 10 per cent of the total) to extremely mild "walking typhoid" in which the victim doesn't even know he has been stricken.

It takes about 10 to 14 days after the germ has entered the body before symptoms appear. First indication that something is wrong is usually a feeling of being tired and worn out.

This, generally, is followed by loss of appetite, dull headache, dizziness or constipation and a steadily rising fever. Along about the seventh day a rose-colored rash may appear on the abdomen and chest. The fever probably will continue for from two to four weeks.

Even moderate cases cause a good deal of suffering and are apt to leave the victim in a weak condition for some time after recovery.

As a matter of fact, the death rate of typhoid fever victims for

Jacoby On Bridge

Finesse Is Bitter Choice

By OSWALD JACOBY

South might well have dropped the bidding at two spades. He did have 16 high card points but his distribution was poor and a sure part score is not to be sneezed at.

North's jump to four spades was correct. He had a very sound suit and the heart bid made his jack-10 of that suit appear really valuable.

The opening diamond lead went to East's king and East promptly cashed the seven of clubs. South played low and West won with the jack.

Now West went into a long huddle. Had East started with only two clubs? That would give South something like four spades, three hearts, two diamonds and four clubs.

West decided that was a possible holding but unlikely from the bidding and that in any event his two clubs would keep. So West shifted to a trump and waited for developments.

South played three rounds of law. East experienced with them had his choice between a club and a heart finesse. He chose the heart finesse since he felt a member could lead to a strength club.

It was a Hobson's choice. He was right about the clubs but the

heart was wrong also and after making his queen of hearts West was smart enough to take his ace of clubs right away.

West decided that was a possible holding but unlikely from the bidding and that in any event his two clubs would keep. So West shifted to a trump and waited for developments.

South played three rounds of law. East experienced with them had his choice between a club and a heart finesse. He chose the heart finesse since he felt a member could lead to a strength club.

West decided that was a possible holding but unlikely from the bidding and that in any event his two clubs would keep. So West shifted to a trump and waited for developments.

South played three rounds of law. East experienced with them had his choice between a club and a heart finesse. He chose the heart finesse since he felt a member could lead to a strength club.

It was a Hobson's choice. He was right about the clubs but the

By H. N. Bundesen, M. D.

Typhoid Still A Threat

Many persons have the mistaken belief that typhoid fever no longer is a danger. Well, it shouldn't be a danger, but it is.

Typhoid fever is a serious infectious disease; one which modern science can prevent and control. We know its cause, we know how it is transmitted and we know how to prevent it. Yet throughout the country many cases occur.

Certainly in the face of facts, we can't afford to relax and consider typhoid as another disease which has been wiped forever.

As a matter of fact, the death rate of typhoid fever victims for

Other spreaders of typhoid include insects, particularly the house fly, and shellfish, especially oysters.

Three injections of typhoid fever vaccine, which can be given by any physician, will protect you from the disease. Even if you are already have been infected, it probably will ease the disease, prevent it from returning at any time of the year and, from water, especially during cold weather.

While normally a warm weather disease, typhoid can be contracted from impure milk at any time of the year and, from water, especially during cold weather.

Other spreaders of typhoid include insects, particularly the house fly, and shellfish, especially oysters.

Three injections of typhoid fever vaccine, which can be given by any physician, will protect you from the disease. Even if you are already have been infected, it probably will ease the disease, prevent it from returning at any time of the year and, from water, especially during cold weather.

While normally a warm weather disease, typhoid can be contracted from impure milk at any time of the year and, from water, especially during cold weather.

Other spreaders of typhoid include insects, particularly the house fly, and shellfish, especially oysters.

Three injections of typhoid fever vaccine, which can be given by any physician, will protect you from the disease. Even if you are already have been infected, it probably will ease the disease, prevent it from returning at any time of the year and, from water, especially during cold weather.

While normally a warm weather disease, typhoid can be contracted from impure milk at any time of the year and, from water, especially during cold weather.

Other spreaders of typhoid include insects, particularly the house fly, and shellfish, especially oysters.

Three injections of typhoid fever vaccine, which can be given by any physician, will protect you from the disease. Even if you are already have been infected, it probably will ease the disease, prevent it from returning at any time of the year and, from water, especially during cold weather.

While normally a warm weather disease, typhoid can be contracted from impure milk at any time of the year and, from water, especially during cold weather.

Other spreaders of typhoid include insects, particularly the house fly, and shellfish, especially oysters.

Three injections of typhoid fever vaccine, which can be given by any physician, will protect you from the disease. Even if you are already have been infected, it probably will ease the disease, prevent it from returning at any time of the year and, from water, especially during cold weather.

While normally a warm weather disease, typhoid can be contracted from impure milk at any time of the year and, from water, especially during cold weather.

Other spreaders of typhoid include insects, particularly the house fly, and shellfish, especially oysters.

Three injections of typhoid fever vaccine, which can be given by any physician, will protect you from the disease. Even if you are already have been infected, it probably will ease the disease, prevent it from returning at any time of the year and, from water, especially during cold weather.

While normally a warm weather disease, typhoid can be contracted from impure milk at any time of the year and, from water, especially during cold weather.

Other spreaders of typhoid include insects, particularly the house fly, and shellfish, especially oysters.

Three injections of typhoid fever vaccine, which can be given by any physician, will protect you from the disease. Even if you are already have been infected, it probably will ease the disease, prevent it from returning at any time of the year and, from water, especially during cold weather.

While normally a warm weather disease, typhoid can be contracted from impure milk at any time of the year and, from water, especially during cold weather.

Other spreaders of typhoid include insects, particularly the house fly, and shellfish, especially oysters.

Three injections of typhoid fever vaccine, which can be given by any physician, will protect you from the disease. Even if you are already have been infected, it probably will ease the disease, prevent it from returning at any time of the year and, from water, especially during cold weather.

While normally a warm weather disease, typhoid can be contracted from impure milk at any time of the year and, from water, especially during cold weather.

Other spreaders of typhoid include insects, particularly the house fly, and shellfish, especially oysters.

Three injections of typhoid fever vaccine, which can be given by any physician, will protect you from the disease. Even if you are already have been infected, it probably will ease the disease, prevent it from returning at any time of the year and, from water, especially during cold weather.

While normally a warm weather disease, typhoid can be contracted from impure milk at any time of the year and, from water, especially during cold weather.

Other spreaders of typhoid include insects, particularly the house fly, and shellfish, especially oysters.

Three injections of typhoid fever vaccine, which can be given by any physician, will protect you from the disease. Even if you are already have been infected, it probably will ease the disease, prevent it from returning at any time of the year and, from water, especially during cold weather.

While normally a warm weather disease, typhoid can be contracted from impure milk at any time of the year and, from water, especially during cold weather.

Other spreaders of typhoid include insects, particularly the house fly, and shellfish, especially oysters.

Three injections of typhoid fever vaccine, which can be given by any physician, will protect you from the disease. Even if you are already have been infected, it probably will ease the disease, prevent it from returning at any time of the year and, from water, especially during cold weather.

While normally a warm weather disease, typhoid can be contracted from impure milk at any time of the year and, from water, especially during cold weather.

Other spreaders of typhoid include insects, particularly the house fly, and shellfish, especially oysters.

Three injections of typhoid fever vaccine, which can be given by any physician, will protect you from the disease. Even if you are already have been infected, it probably will ease the disease, prevent it from returning at any time of the year and, from water, especially during cold weather.

While normally a warm weather disease, typhoid can be contracted from impure milk at any time of the year and, from water, especially during cold weather.

Other spreaders of typhoid include insects, particularly the house fly, and shellfish, especially oysters.

Three injections of typhoid fever vaccine, which can be given by any physician, will protect you from the disease. Even if you are already have been infected, it probably will ease the disease, prevent it from returning at any time of the year and, from water, especially during cold weather.

While normally a warm weather disease, typhoid can be contracted from impure milk at any time of the year and, from water, especially during cold weather.

Other spreaders of typhoid include insects, particularly the house fly, and shellfish, especially oysters.

Three injections of typhoid fever vaccine, which can be given by any physician, will protect you from the disease. Even if you are already have been infected, it probably will ease the disease, prevent it from returning at any time of the year and, from water, especially during cold weather.

While normally a warm weather disease, typhoid can be contracted from impure milk at any time of the year and, from water, especially during cold weather.

Other spreaders of typhoid include insects, particularly the house fly, and shellfish, especially oysters.

Three injections of typhoid fever vaccine, which can be given by any physician, will protect you from the disease. Even if you are already have been infected, it probably will ease the disease, prevent it from returning at any time of the year and, from water, especially during cold weather.

While normally a warm weather disease, typhoid can be contracted from impure milk at any time of the year and, from water, especially during cold weather.

Other spreaders of typhoid include insects, particularly the house fly, and shellfish, especially oysters.

Three injections of typhoid fever vaccine, which can be given by any physician, will protect you from the disease. Even if you are already have been infected, it probably will ease the disease, prevent it from returning at any time of the year and, from water, especially during cold weather.

While normally a warm weather disease, typhoid can be contracted from impure milk at any time of the year and, from water, especially during cold weather.

Other spreaders of typhoid include insects, particularly the house fly, and shellfish, especially oysters.

Three injections of typhoid fever vaccine, which can be given by any physician, will protect you from the disease. Even if you are already have been infected, it probably will ease the disease, prevent it from returning at any time of the year and, from water, especially during cold weather.

While normally a warm weather disease, typhoid can be contracted from impure milk at any time of the year and, from water, especially during cold weather.

Other spreaders of typhoid include insects, particularly the house fly, and shellfish, especially oysters.

Three injections of typhoid fever vaccine, which can be given by any physician, will protect you from the disease. Even if you are already have been infected, it probably will ease the disease, prevent it from returning at any time of the year and, from water, especially during cold weather.

While normally a warm weather disease, typhoid can be contracted from impure milk at any time of the year and, from water, especially during cold weather.

Other spreaders of typhoid include insects, particularly the house fly, and shellfish, especially oysters.

Three injections of typhoid fever vaccine, which can be given by any physician, will protect you from the disease. Even if you are already have been infected, it probably will ease the disease, prevent it from returning at any time of the year and, from water, especially during cold weather.

While normally a warm weather disease, typhoid can be contracted from impure milk at any time of the year and, from water, especially during cold weather.

Other spreaders of typhoid include insects, particularly the house fly, and shellfish, especially oysters.

Three injections of typhoid fever vaccine, which can be given by any physician, will protect you from the disease. Even if you are already have been infected, it probably will ease the disease, prevent it from returning at any time of the year and, from water, especially during cold weather.

While normally a warm weather disease, typhoid can be contracted from impure milk at any time of the year and, from water, especially during cold weather.

Other spreaders of typhoid include insects, particularly the house fly, and shellfish, especially oysters.

Three injections of typhoid fever vaccine, which can be given by any physician, will protect you from the disease. Even if you are already have been infected, it probably will ease the disease, prevent it from returning at any time of the year and, from water, especially during cold weather.

While normally a warm weather disease, typhoid can be contracted from impure milk at any time of the year and, from water, especially during cold weather.

Other spreaders of typhoid include insects, particularly the house fly, and shellfish, especially oysters.

Three injections of typhoid fever vaccine, which can be given by any physician, will protect you from the disease. Even if you are already have been infected, it probably will ease the disease, prevent it from returning at any time of the year and, from water, especially during cold weather.

While normally a warm weather disease, typhoid can be contracted from impure milk at any time of the year and, from water, especially during cold weather.

Other spreaders of typhoid include insects, particularly the house fly, and shellfish, especially oysters.

Three injections of typhoid fever vaccine, which can be given by any physician, will protect you from the disease. Even if you are already have been infected, it probably will ease the disease, prevent it from returning at any time of the year and, from water, especially during cold weather.

While normally a warm weather disease, typhoid can be contracted from impure milk at any time of the year and, from water, especially during cold weather.

Other spreaders of typhoid include insects, particularly the house fly, and shellfish, especially oysters.

Three injections of typhoid fever vaccine, which can be given by any physician, will protect you from the disease. Even if you are already have been infected, it probably will ease the disease, prevent it from returning at any time of the year and, from water, especially during cold weather.

While normally a warm weather disease, typhoid can be contracted from impure milk at any time of the year and, from water, especially during cold weather.

Other spreaders of typhoid include insects, particularly the house fly, and shellfish, especially oysters.

Three injections of typhoid fever vaccine, which can be given by any physician, will protect you from the disease. Even if you are already have been infected, it probably will ease the disease, prevent it from returning at any time of the year and, from water, especially during cold weather.

While normally a warm weather disease, typhoid can be contracted from impure milk at any time of the year and, from water, especially during cold weather.

Other spreaders of typhoid include insects, particularly the house fly, and shellfish, especially oysters.

Three injections of typhoid fever vaccine, which can be given by any physician, will protect you from the disease. Even if you are already have been infected, it probably will ease the disease, prevent it from returning at any time of the year and, from water, especially during cold weather.

While normally a warm weather disease, typhoid can be contracted from impure milk at any time of the year and, from water, especially during cold weather.

Other spreaders of typhoid include insects, particularly the house fly, and shellfish, especially oysters.

Three injections of typhoid fever vaccine, which can be given by any physician, will protect you from the disease. Even if you are already have been infected, it probably will ease the disease, prevent it from returning at any time of the year and, from water, especially during cold weather.

While normally a warm weather disease, typhoid can be contracted from impure milk at any time of the year and, from water, especially during cold weather.

Other spreaders of typhoid include insects, particularly the house fly, and shellfish, especially oysters.

Three injections of typhoid fever vaccine, which can be given by any physician, will protect you from the disease. Even if you are already have been infected, it probably will ease the disease, prevent it from returning at any time of the year and, from water, especially during cold weather.

While normally a warm weather disease, typhoid can be contracted from impure milk at any time of the year and, from water, especially during cold weather.

Other spreaders of typhoid include insects, particularly the house fly, and shellfish, especially oysters.

Three injections of typhoid fever vaccine, which can be given by any physician, will protect you from the disease. Even if you are already have been infected, it probably will ease the disease, prevent it from returning at any time of the year and, from water, especially during cold weather.

While normally a warm weather disease, typhoid can be contracted from impure milk at any time of the year and, from water, especially during cold weather.

Other spreaders of typhoid include insects, particularly the house fly, and shellfish, especially oysters.

Three injections of typhoid fever vaccine, which can be given by any physician, will protect you from the disease. Even if you are already have been infected, it probably will ease the disease, prevent it from returning at any time of the year and, from water, especially during cold weather.

While normally a warm weather disease, typhoid can be contracted from impure milk at any time of the year and, from water, especially during cold weather.

Other spreaders of typhoid include insects, particularly the house fly, and shellfish, especially oysters.

Three injections of typhoid fever vaccine, which can be given by any physician, will protect you from the disease. Even if you are already have been infected, it probably will ease the disease, prevent it from returning at any time of the year and, from water, especially during cold weather.

While normally a warm weather disease, typhoid can be contracted from impure milk at any time of the year and, from water, especially during cold weather.

Other spreaders of typhoid include insects, particularly the house fly, and shellfish, especially oysters.

Three injections of typhoid fever vaccine, which can be given by any physician, will protect you from the disease. Even if you are already have been infected, it probably will ease the disease, prevent it from returning at any time of the year and, from water, especially during cold weather.

While normally a warm weather disease, typhoid can be contracted from impure milk at any time of the year and, from water, especially during cold weather.

Other spreaders of typhoid include insects, particularly the house fly, and shellfish, especially oysters.

Three injections of typhoid fever vaccine, which can be given by any physician, will protect you from the disease. Even if you are already have been infected, it probably will ease the disease, prevent it from returning at any time of the year and, from water, especially during cold weather.

While normally a warm weather disease, typhoid can be contracted from impure milk at any time of the year and, from water, especially during cold weather.

Other spreaders of typhoid include insects, particularly the house fly, and shellfish, especially oysters.

3 MORE DAYS to Celebrate

the
Second Anniversary of
Lloyd's Pastry Kitchen
364 EAST COURT STREET
THURS., FRI., SAT., FEB. 5-6-7

FREE COFFEE AND A DELICIOUS DONUT OR CUPCAKE TO EVERYONE

FREE GIANT 10" BEAUTIFULLY DECORATED 2-LAYER CAKE being given away FREE each day. Nothing to buy - just register.
DRAWING HELD 4 P. M. DAILY

LLOYD'S PLAIN OR FROSTED
CAKE DONUTS . . . Doz. 39^c
LLOYD'S BUTTER PECAN
COFFEE CAKES Ea. 39^c
LLOYD'S DEVILS FOOD
LOAF CAKES Ea. 38^c

LLOYD'S DANISH LEMON
Breakfast Rolls . . 6 for 25^c

LLOYD'S CHOCOLATE CHIP
Cookies doz. 35^c 2nd Doz. FREE

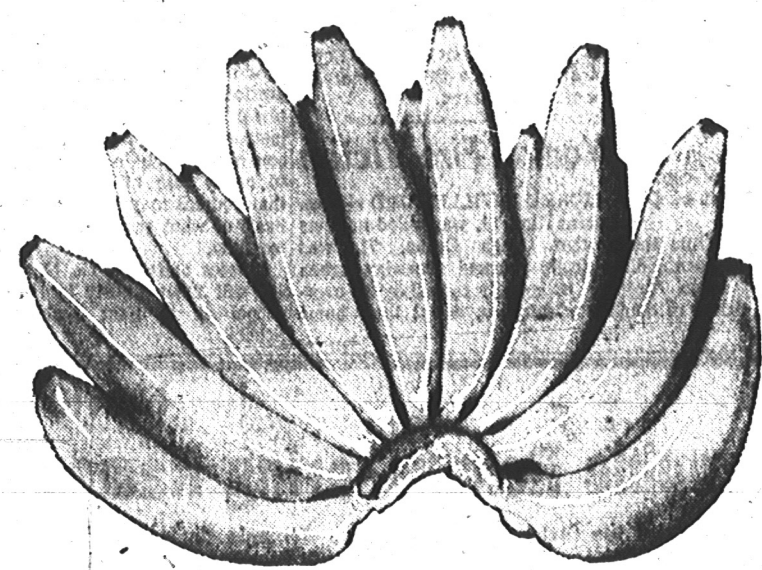
LLOYD'S PASTRIES are BAKED FRESH 2 TIMES DAILY
All Bakery Items Also Available At Both Lloyd's Super Markets

PHILADELPHIA
CREAM CHEESE
3-Oz. Pkg. **10^c**

WISCONSIN AGED SHARP
Cheddar Cheese
Lb. **59^c**

FRESH PICNIC
PORK ROAST
lb. **29^c**

FRESH PORK
Hocks 35^c lb.



OSCAR MAYER THICK SLICED
BACON
2-Lb. Pkg. **98^c**

GOLDEN RIPE BANANAS . . . 2 Lbs. 29^c

FANCY FIRM
Red Ripe TOMATOES Tube of 4 **19^c**

COUNTRY DELIGHT FROZEN
Orange Juice 2 6-Oz. Cans **39^c**

BIRDSEYE FROZEN BABY
LIMA BEANS 2 10-Oz. Pkgs. **39^c**

TERESA'S FROZEN
PIZZA PIE . . . Large 12" Pie 79^c

100% PURE FRESH
GROUND BEEF
lb. **43^c**

Lloyd's of Kankakee

48 LIPTON FLO-THRU TEA BAGS 55^c
1/2-lb. Lipton Tea 69^c

Lloyd's Prices Are LOW PRICES Every Day of the Week!

FRESH CELLO
CARROTS 2 bags **19^c**

COMPLETE CATERING SERVICE

FOR SPECIAL PARTIES, WEDDINGS, FOR ANY AND ALL OCCASIONS - Phone LLOYD'S DELICATESSEN, 1375 W. Jeffery St., WE 2-8326. LET LLOYD'S DELICATESSEN PREPARE your food for your special party, luncheon or dinner. We bake hams, roast turkeys and prepare fried chicken. Leave your order and we'll prepare a complete hot meal to take home.

LLOYD'S HOMEMADE **MACARONI SALAD** 16-Oz. Ctn. **29^c**
LLOYD'S DELICIOUS JELLO **FRUIT JELLO** 16-Oz. Ctn. **35^c**
Delicatessen Items Available at Both Lloyd's Markets

FANCY RED
Delicious APPLES 3 lbs. **39^c**

LLOYD'S EVERYDAY LOW PRICE - DEL MONTE CUT
GREEN BEANS . . . No. 303 Can 19^c

LLOYD'S EVERYDAY LOW PRICE - DEL MONTE C.S.
GOLDEN CORN . . . No. 303 Can 17^c

LLOYD'S EVERYDAY LOW PRICE - LIBBY'S
PUMPKIN No. 2 1/2 Can 16^c

LLOYD'S EVERYDAY LOW PRICE - DEL MONTE
TOMATOES No. 303 Can 23^c

LLOYD'S EVERYDAY LOW PRICE - DEL MONTE CRUSHED
PINEAPPLE No. 2 Can 27^c

LLOYD'S EVERYDAY LOW PRICE - DEL MONTE FRUIT
COCKTAIL No. 303 Can 25^c

LLOYD'S EVERYDAY LOW PRICE - DEL MONTE
PRUNE JUICE Bottle 39^c

LLOYD'S EVERYDAY LOW PRICE - LIBBY'S DEEP
BROWN BEANS . . . 14-Oz. Can 12^c

LLOYD'S EVERYDAY LOW PRICE - BETTY CROCKER WHITE, YEL. OR DEVILS FOOD
CAKE MIX Pkg. 27^c

LLOYD'S EVERYDAY LOW PRICE - BETTY CROCKER ORANGE CHIFFON
CAKE MIX Pkg. 49^c

LLOYD'S EVERYDAY LOW PRICE - BETTY CROCKER COCOA CHIFFON
CAKE MIX Pkg. 49^c

LLOYD'S EVERYDAY LOW PRICE - RAGGEDY ANN STUFFED
QUEEN OLIVES . . . 7 1/2-Oz. Jar 39^c

LLOYD'S EVERYDAY LOW PRICE - SWIFT'S
PEANUT BUTTER 11-Oz. Jar 29^c

LLOYD'S EVERYDAY LOW PRICE - RAGGEDY ANN
SWEET PEAS . . . 2 No. 303 Cans 31^c

LLOYD'S EVERYDAY LOW PRICE -
GIANT TIDE 5c OFF DEAL Pkg. 68^c

LLOYD'S EVERYDAY LOW PRICE - STRONGHEART
DOG FOOD 1-Lb. Can 9^c

LLOYD'S EVERYDAY LOW PRICE - RAGGEDY ANN
FRUIT COCKTAIL No. 2 1/2 Can 37^c

LLOYD'S EVERYDAY LOW PRICE - RAGGEDY ANN
CATSUP 2 14-Oz. Bottles 29^c

1375 W. JEFFERY STREET
Lloyd's OF KANKAKEE
OPEN 9 A.M. TO 9 P.M. 7 DAYS A WEEK

558 E. COURT STREET
OPEN 6 A.M. TO 12 MIDNIGHT 7 DAYS A WEEK

No. 100 of A Series

Your Income Tax Primer

(Teeth of 12 Chapters)
By RICHARD A. MULLENS
Journal - NEA Service

The old saying, "two can live as cheaply as one," has received cynical treatment from many a husband harassed by mounting household bills.

The income tax field, however, is one place where it can even be said that "two can live cheaper than one."

Ladies Aid Society Of Gilman Plans To Serve Lunch

GILMAN (JNS) — The Ladies Aid Society of St. Paul's Lutheran church met Thursday afternoon in the church with new officers taking charge.

There were 27 members and a guest, Mrs. Ronald Zachgo, present.

Mrs. Charles Vallow led devotions and the Rev. Harold Ziel conducted the Bible study.

Mrs. Kenneth Peterson, newly-elected president, conducted the meeting. It was announced the Brotherhood of Church will sponsor a chili supper on Feb. 10 at 5 p.m.

Mrs. Floyd Froehling, chairman of the kitchen remodeling committee, gave a report.

Plans were made for women of the church to serve lunch on the evening of Feb. 15, when the new hymnals, recently purchased, will be dedicated. A Royal pastor will speak, "How to Use the New Lutheran Hymnals." The meeting will start at 7 p.m. and lunch will be served.

KENNETH PERDUE, son of Mr. and Mrs. Henry Z. Perdus in Gilman, received his degree in Science of Education at Illinois State Normal University. Kenneth has enrolled to study for his master degree.

HOW COME? The standard deduction for married couples cannot exceed \$1,000 on a joint return or \$500 on separate returns. Unmarried persons, however, can claim up to a \$1,000 standard deduction. By postponing the marriage until Jan. 1, each would use the full \$1,000 standard deduction for the year.

For taxpayers who are already married, it will almost always be advisable to file a joint return.

The essays are to be written on the subject, "Why I Am Proud to Pledge Allegiance to the United States Flag." Grade and high school students are eligible to enter. Entries will be judged in three age group divisions.

The Auxiliary has also decided to send a girl to Girls State in June. Mrs. Milton Farney was selected to attend the patriotic conference in Chicago.

The group will wear cap and gown at the February meeting. The group will wear cap and gown at the February meeting.

The ways and committee announced a profit of \$17.00. The dinner served to Lions Club members and their wives in December.

2 Church Societies In Forrest Will Hold Meetings

FORREST (JNS) — Two of the women's societies of Forrest churches have scheduled meetings for this week.

The Altar and Rosary Society of St. James Catholic Church will meet today in the home of Mrs. Patrick Gallivan at 8 p.m.

The Women's Missionary Society of the Church of God will meet Thursday at 7:30 p.m. in the home of Mrs. Bernice White Sr. The theme is "The Church in the Shadow of the Mosque." The lesson, which will concern the work of the Church of God in the Middle East, will be given by Mrs. Milton Forney. The hosts will be assisted by Mrs. Anna Edwards and Mrs. Edna Sinnett.

Cabery Women Feted At Party

CABERY (JNS) — A birthday party for Mrs. Duane Dowse and Mrs. Ed Oht was held Friday evening in the home of Mrs. Milton Coltrane.

Bridge was played. The honored guests received cards and gifts. Lunch was served by Mrs. Richard Coltrane, Mrs. Orman Olson, Mrs. Charles Coltrane, Mrs. Wayne Coltrane, Mrs. Abe Hanson and Mrs. Milton Coltrane.

MISS JOANNE Gish returned to the University of Illinois on Friday after spending a week at the Godfrey Nelson home.

Mr. and Mrs. William McCulloch and son, Steven, visited Mrs. Margaret Brown, Miss Helen McCall and Mrs. G. W. McCulloch in Pontiac on Saturday.

Hold Miscellaneous Shower, Forrest

FORREST (JNS) — A miscellaneous shower was held Friday night in the home of Mrs. Everett Smith, honoring Miss Arlene Edwards.

Miss Edwards, daughter of Mr. and Mrs. Anna Edwards, will be married to Elmer Poon of Thawville on Feb. 14 in Forrest.

Wesleyan Guild Entertains WSCS In Mommence Hall

MOMMENCE (JNS) — Members of the Women's Society of Christian Service were entertained by the Wesleyan Guild in Methodist Memorial Hall with approximately 40 present.

Take Mr. X's situation. He's a \$50,000-a-year bachelor who goes to the marriage question to his fiancée in December and hints for a Jan. 1 wedding date.

Although she has no income, the girl (like most girls) is smart. She knows that if they get married on Dec. 31, they can file a joint income tax return for the year, whereas if they wait until Jan. 1, he will have to report \$50,000 on a separate return.

A LITTLE FIGURING shows that a joint return will save them more than \$6,000 in taxes for the year. Needless to say, they were happily married on Dec. 31.

You might think from the above story that couples with year-end income should always get married before Jan. 1 so they can take a joint return and save taxes. Unfortunately, here, like so many areas of tax law, you can't take much for granted. If you do, you may end up like Mr. Y.

Mr. Y is a \$100,000-a-year bachelor and a friend of Mr. X. Knowing how well Mr. X made out, the idea of getting married on Dec. 31 and taking a honeymoon on the way is a plan that will be saved by filial piety.

His girl (like most girls) is smart. She knows that since she is a single, she can file a separate return and she won't have to pay taxes on her income. She also knows that if they get married before Jan. 1, she will have to report \$100,000 on a separate return.

HOW COME? The standard deduction for married couples cannot exceed \$1,000 on a joint return or \$500 on separate returns. Unmarried persons, however, can claim up to a \$1,000 standard deduction. By postponing the marriage until Jan. 1, each would use the full \$1,000 standard deduction for the year.

For taxpayers who are already married, it will almost always be advisable to file a joint return.

The essays are to be written on the subject, "Why I Am Proud to Pledge Allegiance to the United States Flag." Grade and high school students are eligible to enter. Entries will be judged in three age group divisions.

The Auxiliary has also decided to send a girl to Girls State in June. Mrs. Milton Farney was selected to attend the patriotic conference in Chicago.

The group will wear cap and gown at the February meeting. The group will wear cap and gown at the February meeting.

The ways and committee announced a profit of \$17.00. The dinner served to Lions Club members and their wives in December.

Altar And Rosary Society, Herscher, Honors Members

HERSCHER (JNS) — The Altar and Rosary Society of St. Margaret Mary's Church met recently in the Marian room after devotions in the church.

The Confraternity of Christian Doctrine lesson, "Superstition," was led by Mrs. Evelyn Fritz and Mrs. Maybelle Wadleigh.

The annual St. Patrick's card party was discussed and Mrs. Mary Rita Lochner was appointed chairman for the year. Mrs. Laura Jensen as co-chairman.

Mrs. Madeline Bouchard, president, thanked Mrs. Aileen Heiler for the work she has done for the Altar and Rosary Society. The Heilers will move to the vacuum area soon. Mrs. Heller's vacancy as head of the Confraternity of Christian Doctrine will be filled by Mrs. Muriel Dietzler.

One spouse died, provided the survivor doesn't remarry during the year. Spouses who were divorced or legally separated under a court decree by the last day of the taxable year cannot file a joint return.

Some unmarried persons can qualify as the "head of household" and are entitled to use a special tax table which gives them half the tax break given to those who file a joint return when one spouse is dead.

REMEMBER that a joint return can be filed if the spouses were husband and wife on the last day of the tax year, or on the date one spouse died, provided the survivor doesn't remarry during the year. Spouses who were divorced or legally separated under a court decree by the last day of the taxable year cannot file a joint return.

Some unmarried persons can qualify as the "head of household" and are entitled to use a special tax table which gives them half the tax break given to those who file a joint return when one spouse is dead.

REMEMBER that a joint return can be filed if the spouses were husband and wife on the last day of the tax year, or on the date one spouse died, provided the survivor doesn't remarry during the year. Spouses who were divorced or legally separated under a court decree by the last day of the taxable year cannot file a joint return.

Some unmarried persons can qualify as the "head of household" and are entitled to use a special tax table which gives them half the tax break given to those who file a joint return when one spouse is dead.

REMEMBER that a joint return can be filed if the spouses were husband and wife on the last day of the tax year, or on the date one spouse died, provided the survivor doesn't remarry during the year. Spouses who were divorced or legally separated under a court decree by the last day of the taxable year cannot file a joint return.

Some unmarried persons can qualify as the "head of household" and are entitled to use a special tax table which gives them half the tax break given to those who file a joint return when one spouse is dead.

REMEMBER that a joint return can be filed if the spouses were husband and wife on the last day of the tax year, or on the date one spouse died, provided the survivor doesn't remarry during the year. Spouses who were divorced or legally separated under a court decree by the last day of the taxable year cannot file a joint return.

Some unmarried persons can qualify as the "head of household" and are entitled to use a special tax table which gives them half the tax break given to those who file a joint return when one spouse is dead.

REMEMBER that a joint return can be filed if the spouses were husband and wife on the last day of the tax year, or on the date one spouse died, provided the survivor doesn't remarry during the year. Spouses who were divorced or legally separated under a court decree by the last day of the taxable year cannot file a joint return.

Some unmarried persons can qualify as the "head of household" and are entitled to use a special tax table which gives them half the tax break given to those who file a joint return when one spouse is dead.

REMEMBER that a joint return can be filed if the spouses were husband and wife on the last day of the tax year, or on the date one spouse died, provided the survivor doesn't remarry during the year. Spouses who were divorced or legally separated under a court decree by the last day of the taxable year cannot file a joint return.

Some unmarried persons can qualify as the "head of household" and are entitled to use a special tax table which gives them half the tax break given to those who file a joint return when one spouse is dead.

REMEMBER that a joint return can be filed if the spouses were husband and wife on the last day of the tax year, or on the date one spouse died, provided the survivor doesn't remarry during the year. Spouses who were divorced or legally separated under a court decree by the last day of the taxable year cannot file a joint return.

Some unmarried persons can qualify as the "head of household" and are entitled to use a special tax table which gives them half the tax break given to those who file a joint return when one spouse is dead.

REMEMBER that a joint return can be filed if the spouses were husband and wife on the last day of the tax year, or on the date one spouse died, provided the survivor doesn't remarry during the year. Spouses who were divorced or legally separated under a court decree by the last day of the taxable year cannot file a joint return.

Some unmarried persons can qualify as the "head of household" and are entitled to use a special tax table which gives them half the tax break given to those who file a joint return when one spouse is dead.

REMEMBER that a joint return can be filed if the spouses were husband and wife on the last day of the tax year, or on the date one spouse died, provided the survivor doesn't remarry during the year. Spouses who were divorced or legally separated under a court decree by the last day of the taxable year cannot file a joint return.

Some unmarried persons can qualify as the "head of household" and are entitled to use a special tax table which gives them half the tax break given to those who file a joint return when one spouse is dead.

REMEMBER that a joint return can be filed if the spouses were husband and wife on the last day of the tax year, or on the date one spouse died, provided the survivor doesn't remarry during the year. Spouses who were divorced or legally separated under a court decree by the last day of the taxable year cannot file a joint return.

Some unmarried persons can qualify as the "head of household" and are entitled to use a special tax table which gives them half the tax break given to those who file a joint return when one spouse is dead.

REMEMBER that a joint return can be filed if the spouses were husband and wife on the last day of the tax year, or on the date one spouse died, provided the survivor doesn't remarry during the year. Spouses who were divorced or legally separated under a court decree by the last day of the taxable year cannot file a joint return.

Some unmarried persons can qualify as the "head of household" and are entitled to use a special tax table which gives them half the tax break given to those who file a joint return when one spouse is dead.

REMEMBER that a joint return can be filed if the spouses were husband and wife on the last day of the tax year, or on the date one spouse died, provided the survivor doesn't remarry during the year. Spouses who were divorced or legally separated under a court decree by the last day of the taxable year cannot file a joint return.

Some unmarried persons can qualify as the "head of household" and are entitled to use a special tax table which gives them half the tax break given to those who file a joint return when one spouse is dead.

REMEMBER that a joint return can be filed if the spouses were husband and wife on the last day of the tax year, or on the date one spouse died, provided the survivor doesn't remarry during the year. Spouses who were divorced or legally separated under a court decree by the last day of the taxable year cannot file a joint return.

Some unmarried persons can qualify as the "head of household" and are entitled to use a special tax table which gives them half the tax break given to those who file a joint return when one spouse is dead.

REMEMBER that a joint return can be filed if the spouses were husband and wife on the last day of the tax year, or on the date one spouse died, provided the survivor doesn't remarry during the year. Spouses who were divorced or legally separated under a court decree by the last day of the taxable year cannot file a joint return.

Present Awards To Gas Co. Employees

Service and safety awards were presented Tuesday evening to individuals and departments of Natural Gas Storage Co. of Illinois during its annual banquet.

B. F. Olson, superintendent of the compressor station at Herscher, was honored with a 10-year service plaque.

Eleven employees at the Herscher plant received five-year awards. They are Billie B. Chandler, Gerald C. Chandler, Wayne J. Fecht, Donald L. Hamende, Vernon R. Martin, Herschel W. Offill, Robert L. Sparks, Willis E. Bennett Jr., Russell O. Hamende, Daniel P. Hoffman and Robert W. Olson.

Olson also accepted a safety plaque for the compressor station recognizing 100,197 hours of work without a lost-time accident.

Harold Lambert, foreman of operations and maintenance accepted the safety plaque for that department, which accumulated 123,033 accident-free work hours.

A SAFETY PLAQUE for 100,292 accident-free work hours in the testing operations department was accepted by Theodore Wadleigh, test engineer.

Special guest at the affair was George P. Garver, president of Natural Gas Storage Co. of Illinois. Also on the guest list were company officials and officers of the union.

Monday night, the board lifted its suspension with its stipulation that articles concerning the Shafter incident be approved before publication by two members of the faculty.

In a statement Tuesday, the 30 students said they will not publish the tax by using the Tax Table (which they must use unless they itemize deductions) and have no other exemptions. The returns would show them \$5 in tax. The reason is that the Tax Table figures the tax at the midpoint of the bracket.

REMEMBER that a joint return can be filed if the spouses were husband and wife on the last day of the tax year, or on the date one spouse died, provided the survivor doesn't remarry during the year. Spouses who were divorced or legally separated under a court decree by the last day of the taxable year cannot file a joint return.

Some unmarried persons can qualify as the "head of household" and are entitled to use a special tax table which gives them half the tax break given to those who file a joint return when one spouse is dead.

REMEMBER that a joint return can be filed if the spouses were husband and wife on the last day of the tax year, or on the date one spouse died, provided the survivor doesn't remarry during the year. Spouses who were divorced or legally separated under a court decree by the last day of the taxable year cannot file a joint return.

Some unmarried persons can qualify as the "head of household" and are entitled to use a special tax table which gives them half the tax break given to those who file a joint return when one spouse is dead.

REMEMBER that a joint return can be filed if the spouses were husband and wife on the last day of the tax year, or on the date one spouse died, provided the survivor doesn't remarry during the year. Spouses who were divorced or legally separated under a court decree by the last day of the taxable year cannot file a joint return.

Some unmarried persons can qualify as the "head of household" and are entitled to use a special tax table which gives them half the tax break given to those who file a joint return when one spouse is dead.

REMEMBER that a joint return can be filed if the spouses were husband and wife on the last day of the tax year, or on the date one spouse died, provided the survivor doesn't remarry during the year. Spouses who were divorced or legally separated under a court decree by the last day of the taxable year cannot file a joint return.

Some unmarried persons can qualify as the "head of household" and are entitled to use a special tax table which gives them half the tax break given to those who file a joint return when one spouse is dead.

REMEMBER that a joint return can be filed if the spouses were husband and wife on the last day of the tax year, or on the date one spouse died, provided the survivor doesn't remarry during the year. Spouses who were divorced or legally separated under a court decree by the last day of the taxable year cannot file a joint return.

Some unmarried persons can qualify as the "head of household" and are entitled to use a special tax table which gives them half the tax break given to those who file a joint return when one spouse is dead.

REMEMBER that a joint return can be filed if the spouses were husband and wife on the last day of the tax year, or on the date one spouse died, provided the survivor doesn't remarry during the year. Spouses who were divorced or legally separated under a court decree by the last day of the taxable year cannot file a joint return.

Some unmarried persons can qualify as the "head of household" and are entitled to use a special tax table which gives them half the tax break given to those who file a joint return when one spouse is dead.

REMEMBER that a joint return can be filed if the spouses were husband and wife on the last day of the tax year, or on the date one spouse died, provided the survivor doesn't remarry during the year. Spouses who were divorced or legally separated under a court decree by the last day of the taxable year cannot file a joint return.

Some unmarried persons can qualify as the "head of household" and are entitled to use a special tax table which gives them half the tax break given to those who file a joint return when one spouse is dead.

REMEMBER that a joint return can be filed if the spouses were husband and wife on the last day of the tax year, or on the date one spouse died, provided the survivor doesn't remarry during the year. Spouses who were divorced or legally separated under a court decree by the last day of the taxable year cannot file a joint return.

Some unmarried persons can qualify as the "head of household" and are entitled to use a special tax table which gives them half the tax break given to those who file a joint return when one spouse is dead.

REMEMBER that a joint return can be filed if the spouses were husband and wife on the last day of the tax year, or on the date one spouse died, provided the survivor doesn't remarry during the year. Spouses who were divorced or legally separated under a court decree by the last day of the taxable year cannot file a joint return.

Some unmarried persons can qualify as the "head of household" and are entitled to use a special tax table which gives them half the tax break given to those who file a joint return when one spouse is dead.

REMEMBER that a joint return can be filed if the spouses were husband and wife on the last day of the tax year, or on the date one spouse died, provided the survivor doesn't remarry during the year. Spouses who were divorced or legally separated under a court decree by the last day of the taxable year cannot file a joint return.

Some unmarried persons can qualify as the "head of household" and are entitled to use a special tax table which gives them half the tax break given to those who file a joint return when one spouse is dead.

REMEMBER that a joint return can be filed if the spouses were husband and wife on the last day of the tax year, or on the date one spouse died, provided the survivor doesn't remarry during the year. Spouses who were divorced or legally separated under a court decree by the last day of the taxable year cannot file a joint return.

Some unmarried persons can qualify as the "head of household" and are entitled to use a special tax table which gives them half the tax break given to those who file a joint return when one spouse is dead.

REMEMBER that a joint return can be filed if the spouses were husband and wife on the last day of the tax year, or on the date one spouse died, provided the survivor doesn't remarry during the year. Spouses who were divorced or legally separated under a court decree by the last day of the taxable year cannot file a joint return.

Some unmarried persons can qualify as the "head of household" and are entitled to use a special tax table which gives them half the tax break given to those who file a joint return when one spouse is dead.

REMEMBER that a joint return can be filed if the spouses were husband and wife on the last day of the tax year, or on the date one spouse died, provided the survivor doesn't remarry during the year. Spouses who were divorced or legally separated under a court decree by the last day of the taxable year cannot file a joint return.

Some unmarried persons can qualify as the "head of household" and are entitled to use a special tax table which gives them half the tax break given to those who file a joint return when one spouse is dead.

REMEMBER that a joint return can be filed if the spouses were husband and wife on the last day of the tax year, or on the date one spouse died, provided the survivor doesn't remarry during the year. Spouses who were divorced or legally separated under a court decree by the last day of the taxable year cannot file a joint return.

Some unmarried persons can qualify as the "head of household" and are entitled to use a special tax table which gives them half the tax break given to those who file a joint return when one spouse is dead.

REMEMBER that a joint return can be filed if the spouses were husband and wife on the last day of the tax year, or on the date one spouse died, provided the survivor doesn't remarry during the year. Spouses who were divorced or legally separated under a court decree by the last day of the taxable year cannot file a joint return.

Some unmarried persons can qualify as the "head of household" and are entitled to use a special tax table which gives them half the tax break given to those who file a joint return when one spouse is dead.

Present Awards To Gas Co. Employees

Service and safety awards were presented Tuesday evening to individuals and departments of Natural Gas Storage Co. of Illinois during its annual banquet.

B. F. Olson, superintendent of the compressor station at Herscher, was honored with a 10-year service plaque.

Eleven employees at the Herscher plant received five-year awards. They are Billie B. Chandler, Gerald C. Chandler, Wayne J. Fecht, Donald L. Hamende, Vernon R. Martin, Herschel W. Offill, Robert L. Sparks, Willis E. Bennett Jr., Russell O. Hamende, Daniel P. Hoffman and Robert W. Olson.

Olson also accepted a safety plaque for the compressor station recognizing 100,197 hours of work without a lost-time accident.

Harold Lambert, foreman of operations and maintenance accepted the safety plaque for that department, which accumulated 123,033 accident-free work hours.

A SAFETY PLAQUE for 100,292 accident-free work hours in the testing operations department was accepted by Theodore Wadleigh, test engineer.

Special guest at the affair was George P. Garver, president of Natural Gas Storage Co. of Illinois. Also on the guest list were company officials and officers of the union.

Monday night, the board lifted its suspension with its stipulation that articles concerning the Shafter incident be approved before publication by two members of the faculty.

In a statement Tuesday, the 30 students said they will not publish the tax by using the Tax Table (which they must use unless they itemize deductions) and have no other exemptions. The returns would show them \$5 in tax. The reason is that the Tax Table figures the tax at the midpoint of the bracket.

REMEMBER that a joint return can be filed if the spouses were husband and wife on the last day of the tax year, or on the date one spouse died, provided the survivor doesn't remarry during the year. Spouses who were divorced or legally separated under a court decree by the last day of the taxable year cannot file a joint return.

Some unmarried persons can qualify as the "head of household" and are entitled to use a special tax table which gives them half the tax break given to those who file a joint return when one spouse is dead.

REMEMBER that a joint return can be filed if the spouses were husband and wife on the last day of the tax year, or on the date one spouse died, provided the survivor doesn't remarry during the year. Spouses who were divorced or legally separated under a court decree by the last day of the taxable year cannot file a joint return.

Some unmarried persons can qualify as the "head of household" and are entitled to use a special tax table which gives them half the tax break given to those who file a joint return when one spouse is dead.

REMEMBER that a joint return can be filed if the spouses were husband and wife on the last day of the tax year, or on the date one spouse died, provided the survivor doesn't remarry during the year. Spouses who were divorced or legally separated under a court decree by the last day of the taxable year cannot file a joint return.

Some unmarried persons can qualify as the "head of household" and are entitled to use a special tax table which gives them half the tax break given to those who file a joint return when one spouse is dead.

REMEMBER that a joint return can be filed if the spouses were husband and wife on the last day of the tax year, or on the date one spouse died, provided the survivor doesn't remarry during the year. Spouses who were divorced or legally separated under a court decree by the last day of the taxable year cannot file a joint return.

Some unmarried persons can qualify as the "head of household" and are entitled to use a special tax table which gives them half the tax break given to those who file a joint return when one spouse is dead.

REMEMBER that a joint return can be filed if the spouses were husband and wife on the last day of the tax year, or on the date one spouse died, provided the survivor doesn't remarry during the year. Spouses who were divorced or legally separated under a court decree by the last day of the taxable year cannot file a joint return.

Some unmarried persons can qualify as the "head of household" and are entitled to use a special tax table which gives them half the tax break given to those who file a joint return when one spouse is dead.

REMEMBER that a joint return can be filed if the spouses were husband and wife on the last day of the tax year, or on the date one spouse died, provided the survivor doesn't remarry during the year. Spouses who were divorced or legally separated under a court decree by the last day of the taxable year cannot file a joint return.

Some unmarried persons can qualify as the "head of household" and are entitled to use a special tax table which gives them half the tax break given to those who file a joint return when one spouse is dead.

REMEMBER that a joint return can be filed if the spouses were husband and wife on the last day of the tax year, or on the date one spouse died, provided the survivor doesn't remarry during the year. Spouses who were divorced or legally separated under a court decree by the last day of the taxable year cannot file a joint return.

Some unmarried persons can qualify as the "head of household" and are entitled to use a special tax table which gives them half the tax break given to those who file a joint return when one spouse is dead.

REMEMBER that a joint return can be filed if the spouses were husband and wife on the last day of the tax year, or on the date one spouse died, provided the survivor doesn't remarry during the year. Spouses who were divorced or legally separated under a court decree by the last day of the taxable year cannot file a joint return.

Some unmarried persons can qualify as the "head of household" and are entitled to use a special tax table which gives them half the tax break given to those who file a joint return when one spouse is dead.

REMEMBER that a joint return can be filed if the spouses were husband and wife on the last day of the tax year, or on the date one spouse died, provided the survivor doesn't remarry during the year. Spouses who were divorced or legally separated under a court decree by the last day of the taxable year cannot file a joint return.

Some unmarried persons can qualify as the "head of household" and are entitled to use a special tax table which gives them half the tax break given to those who file a joint return when one spouse is dead.

REMEMBER that a joint return can be filed if the spouses were husband and wife on the last day of the tax year, or on the date one spouse died, provided the survivor doesn't remarry during the year. Spouses who were divorced or legally separated under a court decree by the last day of the taxable year cannot file a joint return.

Some unmarried persons can qualify as the "head of household" and are entitled to use a special tax table which gives them half the tax break given to those who file a joint return when one spouse is dead.

REMEMBER that a joint return can be filed if the spouses were husband and wife on the last day of the tax year, or



Mrs. Samuel H. Shapiro, left, displayed one of six table settings which demonstrated Jewish religious holidays at the interfaith tea sponsored Tuesday by the B'Nai Israel Sisterhood. Pictured with Mrs. Shapiro at her table which featured the New Year holiday were Mrs. Sidney Strome, wife of the rabbi, second from left, Mrs. Earl Bruso and Mrs. Louis Swartz, guests, and Mrs. Howard Gordon, program chairman. (Journal photo)

B'Nai Sisterhood Has Interfaith Tea

In observance of Brotherhood Month, members of B'Nai Israel Sisterhood sponsored an interfaith tea and presented a demonstration of Jewish religious holidays through table settings Tuesday at the B'Nai Temple.

Among the guests present were wives of ministers, chairmen of women's organizations of Protestant Churches and representatives of Catholic Churches.

More than 80 women attended the tea. Following the demonstration of table settings, Mrs. Robert Reuter, president, Mrs. Howard Gordon, program chairman, narrated the program and introduced members who arranged table settings featuring the various Jewish holidays.

Each described her own table setting. Mrs. Joseph Schor explained the arrangement which featured the Hanukkah holiday; Mrs. Ira Heiman, the Sabbath; Mrs. Samuel H. Shapiro, the New Year; Mrs. Fred Hetter, Tabernacle; Mrs. Sidney Strome, Passover; and Mrs. Ralph Dietzweiler, Purim.

Gleaner Lodge Installs

Gleaner Lodge held its installation of officers and annual oyster supper Thursday at the Knights of Columbus Hall.

Mrs. Emmett Dubois was installed as chief gleaner; Mrs. Harold Regnier, vice chief gleaner; Mrs. William Schott, chaplain; Mrs. Roy Rathman, secretary; and Mrs. Nellie Goodknecht, lecturer.

Mrs. Paul Benoit was installed as chairman of the hostess committee. She was assisted by Mrs. Schott, chaplain; Mrs. Roy Rathman, secretary; and Mrs. John Evans, musician.

The next regular business meeting will be Thursday at 8 p.m. at the Knights of Columbus Hall.

Remember Bermuda onions for salads and go-to-go for hamburger; they are large and sweet.



Jean May Fuller, a former WAC, is shown with the six Japanese-American orphans she is rearing as her own because she believes that "one parent is better than none." The youngsters, offspring of GI fathers and Japanese mothers, live with Miss Fuller on a 15-acre chicken ranch in Sonoma, Calif. In front is John. In second row, from left, are Pamela, Jean and Frank and in back row, from left, are Robin, Miss Fuller and Dorothy. (UPI Telephoto)

'Miss' Adopts Six Japanese-Americans

By LILLIE PITTS
United Press International

SONOMA, Calif. (UPI)—Jean May Fuller, a former WAC, is rearing six Japanese-American orphans as her own youngsters because she believes that "one parent is better than none." The youngsters, offspring of GI fathers and Japanese mothers, live with Miss Fuller on a 15-acre chicken ranch in Sonoma, Calif. In front is John. In second row, from left, are Pamela, Jean and Frank and in back row, from left, are Robin, Miss Fuller and Dorothy. (UPI Telephoto)

"I can't explain it. It was as though someone pushed a button. The next thing I knew I had adopted three little girls," she said.

"The youngsters are offspring of GI fathers and Japanese mothers. It took two acts of Congress to get the children here, but I believe you can do anything if you want to badly enough," said Miss Fuller, whose 12-year army career including driving a truck in the African and Italian campaigns of World War II.

After her discharge in 1945, Miss Fuller remained in Japan for two years as a civilian employee, waiting for Congress to pass a bill admitting her five children — three girls and two boys. Then she saw

set the table, from their own clothes and help Dorothy with other household duties. They call her "mother," and Dorothy, "mother."

"The boys take care of the house and help me with other garden work. We all tend the garden and our three acres of wine grapes."

Miss Fuller, one of six children herself, usually wears old GI fatigues, heavy boots and no make-up during her "48-hour day."

"I swap clothes with my sisters. My brothers-in-law are a great help, especially with carpentering."

"Besides my father, there is always a cousin or uncle around the house to keep the children from missing a father, too much. I see no reason why a single woman should not be allowed to adopt children."

Miss Fuller has learned to cut corners on the grocery bill. Two

Paula Learns To Type

By DOROTHY V. WHIPPLE, M.D.

A typewriter can be a great boon to learning and, contrary to what you might think, it can even improve the handwriting.

Paula was in third grade. She was an average student. Paula read quite well but her handwriting and her spelling were pretty awful. She was timid and shy and was overcome with embarrassment when she had to recite in class.

One weekend she had a composition to write. Paula hated compositions. She could think up things to say all right, but getting it on paper was such a chore she just never bothered to write down all she had to say. Paula was alone in the house for several hours Saturday morning. She sneaked into her father's study, put a piece of paper in his typewriter and began her composition about "My Dog Pat."

Dad had shown her something about how to use the machine and she managed quite well. She used the "hunt and peck" system of finding the letters. It was fun. She wrote two whole pages. The finished product wouldn't have won any typing prize but in Paula's eyes it looked wonderful—so much better than her laborious handwriting.

When mother came home Paula was just finishing. She was on top of the world. She had written a composition early and she knew it was the best one she had ever done. Also the paper was a masterpiece of neatness.

Mother read the composition. She was amazed and tremendously pleased and of course said so.

On Monday Paula took her composition to school. The teacher was delighted and asked the child if she would like to read it to the class.

This seemed a turning point for the child. Here was something she could do. She gained confidence in herself and was willing to try. Even the handwriting suddenly became more legible and the papers done in school were less messy.

Many other children profit from the use of a typewriter. It is so much easier to type than to struggle with a pen or pencil. Children enjoy typing, are freer to get on paper those racing ideas. The child's increased morale inspires him to work more effectively at other subjects.

There's no reason why all the dresses in your wardrobe should look as if they were cut from the same pattern or dipped in the same dye vat.

You can also achieve a new You with make-up.

If you've been cosmetically conservative, then get a bit daring. For a big social event, wear colorful eye cosmetics. Instead of black, try blue, green or violet mascara. The blue or violet shade emphasizes blue or gray eyes. The green will focus extra attention on hazel or brown eyes.

Wear colored eye shadow, too. Smooth the shadow stick over the eyelid, then use your finger to fade it out so it's really just a shadow of color.

Don't "always" look the same. It's fun to surprise an audience of family and friends into saying:

"You look wonderful. So different! What have you done to yourself?"

That word "always," spoken with the emphasis of long-established habit, can be a big drawback when it comes to beauty subjects. If you "always" do this and "always" wear that, it's obvious that you're in a rut.

Where appearance is concerned, sameness isn't stimulating. Occasionally, it's a bright idea to go in for a change that will make the old you look new, different, intriguing!

That something new can be a hairdo. Certainly nothing can perk up appearance more than a coiffure change.

If you think there's only one becoming hair style for you, think again because you're mistaken. Put your hair in the hands of a skillful stylist and he'll make a change that will prove becoming. He may keep the line of your old coiffure but give it a completely new look by adding a wave, a bang, a curl or a pouf.

Or try something novel in clothing. "Always" wear blue? Then buy a dress of a different color for a welcome change.

"Always" wear tailored styles? Switch to fluffy, sophisticated or dressy styles.

There's no reason why all the dresses in your wardrobe should look as if they were cut from the same pattern or dipped in the same dye vat.

You can also achieve a new You with make-up.

If you've been cosmetically conservative, then get a bit daring. For a big social event, wear colorful eye cosmetics. Instead of black, try blue, green or violet mascara. The blue or violet shade emphasizes blue or gray eyes. The green will focus extra attention on hazel or brown eyes.

Wear colored eye shadow, too. Smooth the shadow stick over the eyelid, then use your finger to fade it out so it's really just a shadow of color.

Don't "always" look the same. It's fun to surprise an audience of family and friends into saying:



DARE TO BE dramatic with eye make-up for evening. Apply blue mascara with a wand. Smooth on eye shadow to match.

The Old You May Need A Sparkling New Look

By JEANNE D'ARCY

If you "always" wear black, "always" have your hair set in a chignon style, "always" buy blue dresses exclusively, it's time for a change.

Where appearance is concerned, sameness isn't stimulating. Occasionally, it's a bright idea to go in for a change that will make the old you look new, different, intriguing!

That something new can be a hairdo. Certainly nothing can perk up appearance more than a coiffure change.

If you think there's only one becoming hair style for you, think again because you're mistaken. Put your hair in the hands of a skillful stylist and he'll make a change that will prove becoming. He may keep the line of your old coiffure but give it a completely new look by adding a wave, a bang, a curl or a pouf.

Or try something novel in clothing. "Always" wear blue? Then buy a dress of a different color for a welcome change.

"Always" wear tailored styles? Switch to fluffy, sophisticated or dressy styles.

There's no reason why all the dresses in your wardrobe should look as if they were cut from the same pattern or dipped in the same dye vat.

You can also achieve a new You with make-up.

If you've been cosmetically conservative, then get a bit daring. For a big social event, wear colorful eye cosmetics. Instead of black, try blue, green or violet mascara. The blue or violet shade emphasizes blue or gray eyes. The green will focus extra attention on hazel or brown eyes.

Wear colored eye shadow, too. Smooth the shadow stick over the eyelid, then use your finger to fade it out so it's really just a shadow of color.

Don't "always" look the same. It's fun to surprise an audience of family and friends into saying:

"You look wonderful. So different! What have you done to yourself?"

That word "always," spoken with the emphasis of long-established habit, can be a big drawback when it comes to beauty subjects. If you "always" do this and "always" wear that, it's obvious that you're in a rut.

Where appearance is concerned, sameness isn't stimulating. Occasionally, it's a bright idea to go in for a change that will make the old you look new, different, intriguing!

That something new can be a hairdo. Certainly nothing can perk up appearance more than a coiffure change.

If you think there's only one becoming hair style for you, think again because you're mistaken. Put your hair in the hands of a skillful stylist and he'll make a change that will prove becoming. He may keep the line of your old coiffure but give it a completely new look by adding a wave, a bang, a curl or a pouf.

Or try something novel in clothing. "Always" wear blue? Then buy a dress of a different color for a welcome change.

"Always" wear tailored styles? Switch to fluffy, sophisticated or dressy styles.

There's no reason why all the dresses in your wardrobe should look as if they were cut from the same pattern or dipped in the same dye vat.

You can also achieve a new You with make-up.

If you've been cosmetically conservative, then get a bit daring. For a big social event, wear colorful eye cosmetics. Instead of black, try blue, green or violet mascara. The blue or violet shade emphasizes blue or gray eyes. The green will focus extra attention on hazel or brown eyes.

Wear colored eye shadow, too. Smooth the shadow stick over the eyelid, then use your finger to fade it out so it's really just a shadow of color.

Don't "always" look the same. It's fun to surprise an audience of family and friends into saying:

WCSC Of Aroma Park Has Meeting

AROMA PARK (JNS)—The Aroma Park Woman's Society of Christian Service met Thursday afternoon in the church parsonage with members of the Fireside Circle as hostesses.

There were 20 members and four children present. Mrs. Leslie Barnard, vice president, called the meeting to order. Mrs. John Sossman, Mrs. Fred Miles and Mrs. Henry Ort, members of the Standby Circle, presented devotions and the lesson.

It was decided \$5 will be given to a memorial fund, established by the church, for members of the society.

The next meeting will be held Feb. 19 at 1:30 p.m. in the church social room. Members of the Standby Circle will be hostesses and the Sew and Sew Circle will give the lesson.

Donald Donahue, who attends St. Joseph's College, Rensselaer, Ind., is spending his summer vacation with his parents, Mr. and Mrs. Elmer Donahue.

Tommy Stark, former Cullom youth, now in the Navy and stationed at Corpus Christi, Tex., visited his grandparents, Mr. and Mrs. John Goggins on Wednesday.

If you want to cut almonds into even lengthwise slivers, do your slicing while the nuts are still limp after blanching and removing skins.

Now Many Wear FALSE TEETH With More Comfort

PARTICULARLY a pleasant alkaline (non-acid) powder, holds false teeth more firmly. To set and talk in more comfort, just sprinkle a little **PASTETH** on your plates. No gummy, sticky, doughy taste or feeling. **PASTETH** is a new dental product. **PASTETH** at any drug dealer.

New Coin Operated!
20c WASH 10c DRY
30 BENDIX WASHERS — 8 DRYERS
ATTENDANT ON DUTY 8 A.M. — 8 P.M.
MONDAY thru SATURDAY

Courtesy Laundryette
211 WEST COURT STREET
At Washington Ave. Phone WE 3-3517

LECOURS HAVE BEEN MERCHANTS IN KANKAKEE SINCE 1859

All Winter Merchandise Must Be Sold

We Do Not Carry Merchandise from One Year to the Next

Final Clearance
ON
WINTER COATS
FUR TRIMMED—WOOL LINED COATS

1/2 Off of Regular Price

Beautiful Styles and Materials Popular Fall Shades

Winter Casual Coats
1/3 Off of Regular Price

Many Famous Brands—Regular and Junior Sizes
Coats For Year 'Round Wear

SUITS
Fall and Winter Suits—Final Clearance

1/3 Off Of Regular Price

Dresses
Sold Formerly To \$19.95
\$7.95

Dresses
Sold Formerly To \$25.00
\$10.95

Dresses
Sold Formerly To \$35.00
\$12.95

DRESSES
This Group Just Taken From Our Regular Stock

1/3 Off Of Regular Price

Our Entire Stock of Groblue Knits
25% Off Of Regular Price

LECOURS HAVE BEEN SERVING KANKAKEE FOR 100 YEARS... 1859—1959

Happy Hour Club Of Gilman Meets

GILMAN (JNS)—The postponed meeting of the Happy Hour Club was held recently in the home of Mrs. E. J. Gilman. The next meeting will be on Feb. 18.

Cullom

Donald Donahue, who attends St. Joseph's College, Rensselaer, Ind., is spending his summer vacation with his parents, Mr. and Mrs. Elmer Donahue.

Tommy Stark, former Cullom youth, now in the Navy and stationed at Corpus Christi, Tex., visited his grandparents, Mr. and Mrs. John Goggins on Wednesday.

If you want to cut almonds into even lengthwise slivers, do your slicing while the nuts are still limp after blanching and removing skins.

Now Many Wear FALSE TEETH With More Comfort

PARTICULARLY a pleasant alkaline (non-acid) powder, holds false teeth more firmly. To set and talk in more comfort, just sprinkle a little **PASTETH** on your plates. No gummy, sticky, doughy taste or feeling. **PASTETH** is a new dental product. **PASTETH** at any drug dealer.

New Coin Operated!
20c WASH 10c DRY
30 BENDIX WASHERS — 8 DRYERS
ATTENDANT ON DUTY 8 A.M. — 8 P.M.
MONDAY thru SATURDAY

Courtesy Laundryette
211 WEST COURT STREET
At Washington Ave. Phone WE 3-3517

LECOURS HAVE BEEN MERCHANTS IN KANKAKEE SINCE 1859

All Winter Merchandise Must Be Sold

We Do Not Carry Merchandise from One Year to the Next

Final Clearance
ON
WINTER COATS
FUR TRIMMED—WOOL LINED COATS

1/2 Off of Regular Price

Beautiful Styles and Materials Popular Fall Shades

Winter Casual Coats
1/3 Off of Regular Price

Many Famous Brands—Regular and Junior Sizes
Coats For Year 'Round Wear

SUITS
Fall and Winter Suits—Final Clearance

1/3 Off Of Regular Price

Dresses
Sold Formerly To \$19.95
\$7.95

Dresses
Sold Formerly To \$25.00
\$10.95

Dresses
Sold Formerly To \$35.00
\$12.95

DRESSES
This Group Just Taken From Our Regular Stock

1/3 Off Of Regular Price

Our Entire Stock of Groblue Knits
25% Off Of Regular Price

LECOURS HAVE BEEN SERVING KANKAKEE FOR 100 YEARS... 1859—1959

Happy Hour Club Of Gilman Meets

GILMAN (JNS)—The postponed meeting of the Happy Hour Club was held recently in the home of Mrs. E. J. Gilman. The next meeting will be on Feb. 18.



Pre-Lenten Sale!

BUY IN BULK—41-30 COUNT

Fresh Froz. Shrimp 5-lb. Box **\$4.19**

AGED CHEESE 5-lb. Box **59c**

CHEDDAR CHEESE 5-lb. Box **49c**

LONGHORN CHEESE 5-lb. Box **29c**

PERCH 10-Oz. Pkg. **59c**

Fantail Shrimp 10-Oz. Pkg. **25c**

Whiting 2-lb. Pkg. **29c**

Fish Sticks 8-Oz. Pkg. **69c**

Salmon Steaks 14-Oz. Pkg. **59c**

Cheddar Cheese 5-lb. Box **59c**

Brick Cheese 5-lb. Box **59c**

Swiss Cheese 5-lb. Box **59c**

Gouda Cheese 5-lb. Box **49c**

FREE

50 extra S & H Green Stamps!

CLIP THIS COUPON

FREE

50 Extra S&H GREEN STAMPS

With this Coupon and \$5 or more in grocery purchases. Redeemable only at Piggly Wiggly. Coupon expires Saturday, Feb. 7 at closing time. LIMIT ONE COUPON PER FAMILY

MEADOW GOLD ICE CREAM

59c

1/2 gal. Limit 1 to a Customer

MONARCH FRESH FROZEN ORANGE JUICE

\$1.00

6 6-oz. Cans

50 extra S & H Green Stamps!

CLIP THIS COUPON

WORTH 26c

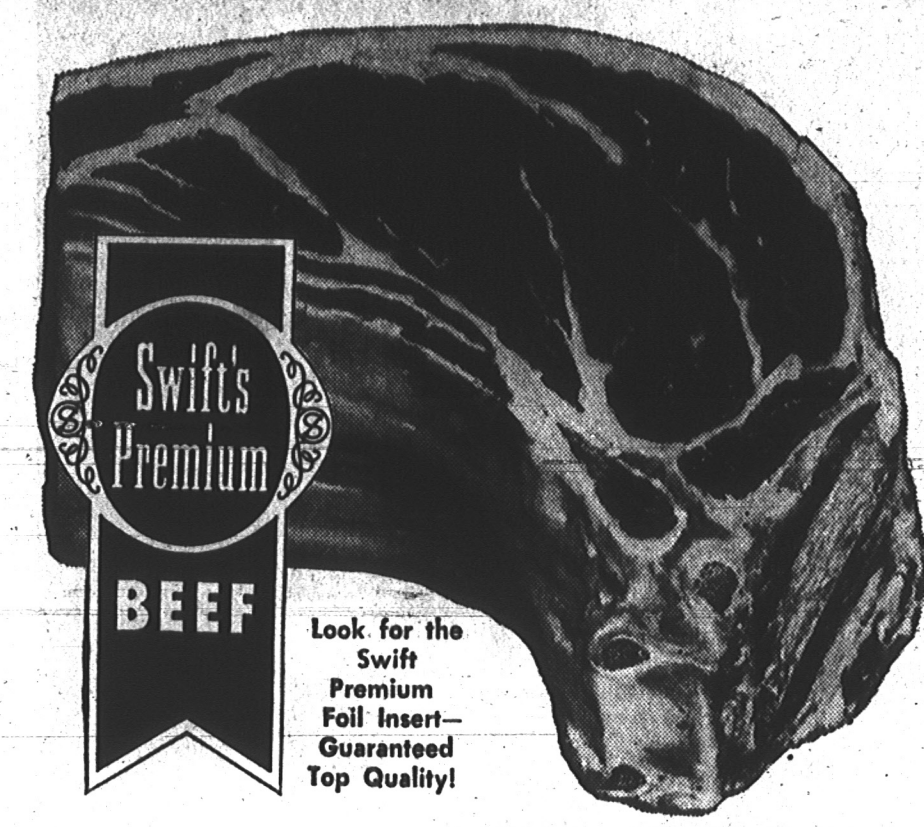
on purchase of 10-lb. Monarch FLOUR

With This Coupon

Redeemable only at Piggly Wiggly. Expires Saturday, Feb. 7 at closing time. LIMIT ONE COUPON PER FAMILY

WE GIVE S. & H. GREEN STAMPS

lenten values



1924 EAST COURT STREET
9 to 9
Open Daily Closed Sun.

This Weekend Enjoy A Superb
GRAND CHAMPION Swift Premium

STANDING RIB ROAST... 69c lb.

BACON Lb. 49c

FRANKS Lb. 49c

PORK LOIN ROAST Lb. 43c

PICNIC HAMS Lb. 39c

LAMB ROAST Lb. 29c

LAMB STEAK Lb. 35c



SEAFOOD VALUES FOR LENT!

Booth Fish Sticks
No fishy taste . . . 1 1/2-lb. Box **79c**
No fishy odor . . .
No bones . . . Fresh Frozen

Booth Fillets of Northern Pike 1-lb. Pkg. **49c**

Booth Fillets of Cod Fish 1-lb. Pkg. **39c**

Booth Fillets of Sole 1-lb. Pkg. **53c**

Booth Fillets of Haddock 1-lb. Pkg. **53c**

Stock Your Freezer Now For Plenty of Variety During Lent!

Special Manor House COFFEE SALE

1-lb. Can Regularly 83c **75c**

NEW HANDY CANS

DEL MONTE DRINK 2 - 29-oz. cans Pineapple-Grapefruit **45c**

DEL MONTE DRINK Pineapple Orange **27c**

DEL MONTE DRINK Pineapple Pear 29 Oz. Can **31c**

Toilet Tissue 2 1000 Sheet Rolls **27c**

Scott Soft-Weve 2 roll Pkg. **27c**

Toilet Tissue 4 roll Pkg. **35c**

Scott Towels Roll **20c**

Wax Paper 125 ft. Roll **27c**

Scotties 400 ct. **29c**

SCOTKINS NAPKINS Dinner Size **27c**

This Weekend In Our Produce Department

SUNKIST ORANGE SALE

Large 113 Size Navels

2 doz. **89c**

POTATOES 25 lbs. **89c**

Serve With Your Rib Roast! DAWN FRESH FANCY BUTTON PINT BOX **25c**

MUSHROOMS

FIRM, FRESH YELLOW ONIONS 3 Lb. Bag **29c**

VINE RIPENED TOMATOES 2 For **15c**

GREEN ONIONS 2 For **25c**

CUCUMBERS 2 For **25c**

Now . . . A Total Cold Relief Treatment With

• **BUFFERIN** •

Safe Pain Relief! Fast Pain Relief! Reduce Fever Fast!

• **123** •

• **SUNKIST LEMONS** •

Replenish Vitamin C! Restore Fluid Balance! Promote Digestion and Regularity!

• **6 for 33c** •

8:30	20 Men	6:30	Paul Harvey, News
8:30	I've Got a Secret	7:00	Low, Nancy
8:30	I've Got a Secret	7:00	Jefferson Drum
8:30	Butterfield	7:00	Leave It To Beaver
8:30	Accused	7:00	Bugs Bunny and Friends
9:00	Bold Venture	8:45	Weather, Sports
9:00	Circle Theater	8:45	Looney
9:00	Circle Theater	9:00	December Bride
9:00	This Is Your Life	9:00	Beat Pacific
9:00	Postings	9:00	Steve Canyon
9:30	San Francisco Heat	9:00	News
9:30	MacKenzie's Raiders	9:00	The Storyteller
9:30	Target	9:00	Derriings
9:30	News	9:00	Derriings
9:30	News Roundup	9:00	Derriings
10:00	News Roundup	9:00	Derriings
10:00	News Roundup	9:00	Derriings



Will Butcher Pigs At Meeting Of FSW Adult Class

FORREST (JNS) — The adult farmers class of the Forrest-Strawn-Wing area will have a true-to-life lesson in selecting hogs for butchering on Thursday, according to the teacher, Patrick Gallivan.

Dick Hearn, associated for many years with the Peoria stockyards, will present the lesson. Hearn will bring with him two pigs, one ideal for butchering and one not so well suited. They will be butchered by a professional butcher, who will accompany Hearn, and the resulting meat cuts will be compared.

The classes are free and everyone is welcome to attend.

Irish President Plans U.S. Visit

DUBLIN, Ireland (UPI)—President Sean T. O'Kelly of Ireland has accepted the invitation of President Eisenhower to visit Washington on St. Patrick's Day, March 17, it was announced Tuesday. It will be the first state visit by a president of the Irish republic to the United States.

Get Big Enjoyment at little cost

One package of delicious Wrigley's Spearmint Gum gives you hours of good, tasty chewing. Aids teeth, digestion, too.

Buy some today.

Wrigley's Spearmint Chewing Gum

Use Journal Want Ad:

Reach THOUSANDS WITHIN HOURS

Will Butcher Pigs At Meeting Of FSW Adult Class

FORREST (JNS) — The adult farmers class of the Forrest-Strawn-Wing area will have a true-to-life lesson in selecting hogs for butchering on Thursday, according to the teacher, Patrick Gallivan.

Dick Hearn, associated for many years with the Peoria stockyards, will present the lesson. Hearn will bring with him two pigs, one ideal for butchering and one not so well suited. They will be butchered by a professional butcher, who will accompany Hearn, and the resulting meat cuts will be compared.

The classes are free and everyone is welcome to attend.

Irish President Plans U.S. Visit

DUBLIN, Ireland (UPI)—President Sean T. O'Kelly of Ireland has accepted the invitation of President Eisenhower to visit Washington on St. Patrick's Day, March 17, it was announced Tuesday. It will be the first state visit by a president of the Irish republic to the United States.

Who's Who FOR SERVICE

LEADING FIRMS AND INDIVIDUALS WHO CAN BEST SERVE YOU

PAINTING & DECORATING

INTERIOR & EXTERIOR—complete painting, papering, wallpapering, etc. K. Henderson, Ph. WE 3-1384.

RUG & UPHOLSTERY CLEANING

18 Hrs. DURELLE SERVICE. Sofas and chairs cleaned, reupholstered, etc. Ph. WE 3-1384.

SEWING MACHINE REPAIR

SEWING MACHINES REPAIRED. All makes. Also vacuum cleaners, etc. Ph. WE 3-1384.

CONCRETE & MASONRY

READY MIX CONCRETE. BAND PUMP. CRUSHED STONE. BLACK DIRT. AZZARELLI MATERIAL CO. 401 N. WEST AVE. WE 2-7483.

ELECTRIC MOTORS

REPAIR & SERVICE. 323 S. Washington. WE 2-3118.

ELECTRIC REPAIR

BRADLEY & HOFFER. Electrical Contractors. 234 N. Euclid. Ph. WE 3-1384.

FURNACE REPAIR

FURNACE cleaning and oiling. Replacing and repairing. Ph. WE 3-1384.

PAINTING AND DECORATING

PAINTING, Papering, 35 years experience. Ph. WE 3-1384.

Let's EXPLORE YOUR MIND

By Sylvanus M. Duvall, Ph.D. and Evelyn M. Duvall, Ph.D.

DAILY CROSSWORD

ACROSS: 1. Not a flower. 2. Greeting. 3. To plait. 4. Spanish boy's name. 5. To rope. 6. Old World wild dog. 7. Road. 8. Content. 9. Tribute. 10. Distribute. 11. Laps. 12. Goes on shipboard. 13. Explosive sound. 14. Raccoon (Scot.). 15. Neat. 16. Downward. 17. Zxcalm. 18. Degree. 19. Mythical bird. 20. Males. 21. Scotch land owner. 22. Antiquated. 23. Darned. 24. Slacks.

DOWN: 1. Musical note. 2. In. 3. Border. 4. Chess. 5. Second. 6. English. 7. Just. 8. Content. 9. Tribute. 10. Distribute. 11. Laps. 12. Goes on shipboard. 13. Explosive sound. 14. Raccoon (Scot.). 15. Neat. 16. Downward. 17. Zxcalm. 18. Degree. 19. Mythical bird. 20. Males. 21. Scotch land owner. 22. Antiquated. 23. Darned. 24. Slacks.

DAILY CRYPTOQUOTE

Here's how to work it: A X Y D I B A A X R I O N G E E D O W One letter stands for another. In this sample A is used for the three I's, X for the two O's. Single letters, apostrophes, the length and formation of the words are all hints. Each day the code letters are different.

A Cryptogram Quotation

JCA HZ P THPO-EMGGA-AMGG-2MD APDT HGG-BCFTCLGMB.

Yesterday's Cryptogram: THERE IS ALWAYS SOMEONE WHO'S OFF THEIR HEAD.—ALBOP.

Let's EXPLORE YOUR MIND

By Sylvanus M. Duvall, Ph.D. and Evelyn M. Duvall, Ph.D.

Let's EXPLORE YOUR MIND

By Sylvanus M. Duvall, Ph.D. and Evelyn M. Duvall, Ph.D.

Scores Lack Of Controls In 162 Audits

SPRINGFIELD (AP) — Loop roles of the type that played a large part in the House scandals and led to the creation of an Illinois auditor general were scored today in that official's first annual report.

The 188-page document, summarizing 162 audits of state agencies, laid heavy criticism on lack of controls in the handling of payroll and other warrants in the fiscal year ended June 30, 1958.

It alsohouse observers expected the document to be a springboard for criticism of the administration and a bible for good financial housekeeping. It was also expected to provide a standard for judging quality of state housekeeping advances or reverses in future report periods.

PAYROLL AND OTHER WARRANTS, said Auditor General Frank Whitney, were not consistently being mailed directly to the payee—often they would be returned to the agency which originally handled the warrants. That agency in turn would see that the payee received his money.

It was in this way that Hodge sometimes handled warrants in his own purposes.

Whitney said he wasted no time in mentioning commendable conditions. He spared no office in his criticisms, noting that Supreme Court justices, for instance, sometimes failed to back up pay vouchers with receipted bills.

Form Auxiliary For Braceville Fire Department

BRACEVILLE (JNS)—A meeting was held in the Community Hall Thursday evening to organize a Women's Auxiliary of the Fire Department.

Guests were Mrs. Marion MacDonald, Mrs. Harold Jensen, Mrs. Lester Wise and Mrs. Robert Wise of the Gardner Firebells.

Officers were elected as follows: Mrs. Joe Sperto, president; Mrs. John Rooder, vice president; Mrs. Henry Gaddo Jr., treasurer; Mrs. George Koca, secretary; Mrs. Joe Rockis, chaplain; and Mrs. W. R. Ray, physician.

The installation of these officers will be held Tuesday in Community Hall at 7 p.m.

Any women interested in the auxiliary may attend this meeting and enroll.

Henley American Saddle String Moves To West

The Henley string of American Saddle horses made the trip from Monmouth to Paso Robles, Calif., without a mishap, reports James Walker, former Chebanse auctioneer and stockman.

Walker supervised the moving of the Henley horses and Angus cattle. Dr. and Mrs. Ballentine Henley owned a farm in the Monmouth area and now have a 635 acre spread near Paso Robles.

Walker, who spent four days in a freighting box car personally conducting the shipment, was exceptionally pleased with the 80 degree temperature in California. So pleased, in fact, that he may remain out west.

Dr. Henley, president of the College of Osteopathic Physicians and Surgeons in Los Angeles, took advantage of a long forgotten statute on the books of the railroad companies which offered a special incentive rate to immigrant farmers moving out to settle the west.

The regulations stipulated that the immigrant must move his entire farming operation to take advantage of the low rate. So the Henleys packed up everything in the "home place"—livestock, farming equipment and furniture—loaded it in three box cars and sent it all to California.

CASH MUST ACCOMPANY OUT-OF-TOWN ORDERS—DIAL 3-7711

Word rates using a point list fee type for consecutive insurances	NUMBER OF WORDS	1	2	3	4	5	6	7	8	9	10	11	12	13	14	15	16	17	18	19	20	21	22	23	24	25	26	27	28	29	30	31	32	33	34	35	36	37	38	39	40	41	42	43	44	45	46	47	48	49	50	51	52	53	54	55	56	57	58	59	60	61	62	63	64	65	66	67	68	69	70	71	72	73	74	75	76	77	78	79	80	81	82	83	84	85	86	87	88	89	90	91	92	93	94	95	96	97	98	99	100																																																																																																																																																																																																																																																																																																																																																																																																																																																																																																																																																																																																																																																																																																																																																																																																																																																																																																																										
Charge up to 24	1.06	1.16	1.26	1.36	1.46	1.56	1.66	1.76	1.86	1.96	2.06	2.16	2.26	2.36	2.46	2.56	2.66	2.76	2.86	2.96	3.06	3.16	3.26	3.36	3.46	3.56	3.66	3.76	3.86	3.96	4.06	4.16	4.26	4.36	4.46	4.56	4.66	4.76	4.86	4.96	5.06	5.16	5.26	5.36	5.46	5.56	5.66	5.76	5.86	5.96	6.06	6.16	6.26	6.36	6.46	6.56	6.66	6.76	6.86	6.96	7.06	7.16	7.26	7.36	7.46	7.56	7.66	7.76	7.86	7.96	8.06	8.16	8.26	8.36	8.46	8.56	8.66	8.76	8.86	8.96	9.06	9.16	9.26	9.36	9.46	9.56	9.66	9.76	9.86	9.96	10.06	10.16	10.26	10.36	10.46	10.56	10.66	10.76	10.86	10.96	11.06	11.16	11.26	11.36	11.46	11.56	11.66	11.76	11.86	11.96	12.06	12.16	12.26	12.36	12.46	12.56	12.66	12.76	12.86	12.96	13.06	13.16	13.26	13.36	13.46	13.56	13.66	13.76	13.86	13.96	14.06	14.16	14.26	14.36	14.46	14.56	14.66	14.76	14.86	14.96	15.06	15.16	15.26	15.36	15.46	15.56	15.66	15.76	15.86	15.96	16.06	16.16	16.26	16.36	16.46	16.56	16.66	16.76	16.86	16.96	17.06	17.16	17.26	17.36	17.46	17.56	17.66	17.76	17.86	17.96	18.06	18.16	18.26	18.36	18.46	18.56	18.66	18.76	18.86	18.96	19.06	19.16	19.26	19.36	19.46	19.56	19.66	19.76	19.86	19.96	20.06	20.16	20.26	20.36	20.46	20.56	20.66	20.76	20.86	20.96	21.06	21.16	21.26	21.36	21.46	21.56	21.66	21.76	21.86	21.96	22.06	22.16	22.26	22.36	22.46	22.56	22.66	22.76	22.86	22.96	23.06	23.16	23.26	23.36	23.46	23.56	23.66	23.76	23.86	23.96	24.06	24.16	24.26	24.36	24.46	24.56	24.66	24.76	24.86	24.96	25.06	25.16	25.26	25.36	25.46	25.56	25.66	25.76	25.86	25.96	26.06	26.16	26.26	26.36	26.46	26.56	26.66	26.76	26.86	26.96	27.06	27.16	27.26	27.36	27.46	27.56	27.66	27.76	27.86	27.96	28.06	28.16	28.26	28.36	28.46	28.56	28.66	28.76	28.86	28.96	29.06	29.16	29.26	29.36	29.46	29.56	29.66	29.76	29.86	29.96	30.06	30.16	30.26	30.36	30.46	30.56	30.66	30.76	30.86	30.96	31.06	31.16	31.26	31.36	31.46	31.56	31.66	31.76	31.86	31.96	32.06	32.16	32.26	32.36	32.46	32.56	32.66	32.76	32.86	32.96	33.06	33.16	33.26	33.36	33.46	33.56	33.66	33.76	33.86	33.96	34.06	34.16	34.26	34.36	34.46	34.56	34.66	34.76	34.86	34.96	35.06	35.16	35.26	35.36	35.46	35.56	35.66	35.76	35.86	35.96	36.06	36.16	36.26	36.36	36.46	36.56	36.66	36.76	36.86	36.96	37.06	37.16	37.26	37.36	37.46	37.56	37.66	37.76	37.86	37.96	38.06	38.16	38.26	38.36	38.46	38.56	38.66	38.76	38.86	38.96	39.06	39.16	39.26	39.36	39.46	39.56	39.66	39.76	39.86	39.96	40.06	40.16	40.26	40.36	40.46	40.56	40.66	40.76	40.86	40.96	41.06	41.16	41.26	41.36	41.46	41.56	41.66	41.76	41.86	41.96	42.06	42.16	42.26	42.36	42.46	42.56	42.66	42.76	42.86	42.96	43.06	43.16	43.26	43.36	43.46	43.56	43.66	43.76	43.86	43.96	44.06	44.16	44.26	44.36	44.46	44.56	44.66	44.76	44.86	44.96	45.06	45.16	45.26	45.36	45.46	45.56	45.66	45.76	45.86	45.96	46.06	46.16	46.26	46.36	46.46	46.56	46.66	46.76	46.86	46.96	47.06	47.16	47.26	47.36	47.46	47.56	47.66	47.76	47.86	47.96	48.06	48.16	48.26	48.36	48.46	48.56	48.66	48.76	48.86	48.96	49.06	49.16	49.26	49.36	49.46	49.56	49.66	49.76	49.86	49.96	50.06	50.16	50.26	50.36	50.46	50.56	50.66	50.76	50.86	50.96	51.06	51.16	51.26	51.36	51.46	51.56	51.66	51.76	51.86	51.96	52.06	52.16	52.26	52.36	52.46	52.56	52.66	52.76	52.86	52.96	53.06	53.16	53.26	53.36	53.46	53.56	53.66	53.76	53.86	53.96	54.06	54.16	54.26	54.36	54.46	54.56	54.66	54.76	54.86	54.96	55.06	55.16	55.26	55.36	55.46	55.56	55.66	55.76	55.86	55.96	56.06	56.16	56.26	56.36	56.46	56.56	56.66	56.76	56.86	56.96	57.06	57.16	57.26	57.36	57.46	57.56	57.66	57.76	57.86	57.96	58.06	58.16	58.26	58.36	58.46	58.56	58.66	58.76	58.86	58.96	59.06	59.16	59.26	59.36	59.46	59.56	59.66	59.76	59.86	59.96	60.06	60.16	60.26	60.36	60.46	60.56	60.66	60.76	60.86	60.96	61.06	61.16	61.26	61.36	61.46	61.56	61.66	61.76	61.86	61.96	62.06	62.16	62.26	62.36	62.46	62.56	62.66	62.76	62.86	62.96	63.06	63.16	63.26	63.36	63.46	63.56	63.66	63.76	63.86	63.96	64.06	64.16	64.26	64.36	64.46	64.56	64.66	64.76	64.86	64.96	65.06	65.16	65.26	65.36	65.46	65.56	65.66	65.76	65.86	65.96	66.06	66.16	66.26	66.36	66.46	66.56	66.66	66.76	66.86	66.96	67.06	67.16	67.26	67.36	67.46	67.56	67.66	67.76	67.86	67.96	68.06	68.16	68.26	68.36	68.46	68.56	68.66	68.76	68.86	68.96	69.06	69.16	69.26	69.36	69.46	69.56	69.66	69.76	69.86	69.96	70.06	70.16	70.26	70.36	70.46	70.56	70.66	70.76	70.86	70.96	71.06	71.16	71.26	71.36	71.46	71.56	71.66	71.76	71.86	71.96	72.06	72.16	72.26	72.36	72.46	72.56	72.66	72.76	72.86	72.96	73.06	73.16	73.26	73.36	73.46	73.56	73.66	73.76	73.86	73.96	74.06	74.16	74.26	74.36	74.46	74.56	74.66	74.76	74.86	74.96	75.06	75.16	75.26	75.36	75.46	75.56	75.66	75.76	75.86	75.96	76.06	76.16	76.26	76.36	76.46	76.56	76.66	76.76	76.86	76.96	77.06	77.16	77.26	77.36	77.46	77.56	77.66	77.76	77.86	77.96	78.06	78.16	78.26	78.36	78.46	78.56	78.66	78.76	78.86	78.96	79.06	79.16	79.26	79.36	79.46	79.56	79.66	79.76	79.86	79.96	80.06	80.16	80.26	80.36	80.46	80.56	80.66	80.76	80.86	80.96	81.06	81.16	81.26	81.36	81.46	81.56	81.66	81.76	81.86	81.96	82.06	82.16	82.26	82.36	82.46	82.56	82.66	82.76	82.86	82.96	83.06	83.16	83.26	83.36	83.46	83.56	83.66	83.76	83.86	83.96	84.06	84.16	84.26	84.36	84.46	84.56	84.66	84.76	84.86	84.96	85.06	85.16	85.26	85.36	85.46	85.56	85.66	85.76	85.86	85.96	86.06	86.16	86.26	86.36	86.46	86.56	86.66	86.76	86.86	86.96	87.06	87.16	87.26	87.36	87.46	87.56	87.66	87.76	87.86	87.96	88.06	88.16	88.26	88.36	88.46	88.56	88.66	88.76	88.86	88.96	89.06	89.16	89.26	89.36	89.46	89.56	89.66	89.76	89.86	89.96	90.06	90.16	90.26	90.36	90.46	90.56	90.66	90.76	90.86	90.96	91.06	91.16	91.26	91.36	91.46	91.56	91.66	91.76	91.86	91.96	92.06	92.16	92.26	92.36	92.46	92.56	92.66	92.76	92.86	92.96	93.06	93.16	93.26	93.36	93.46	93.56	93.66	93.76	93.86	93.96	94.06	94.16	94.26	94.36	94.46	94.56	94.66	94.76	94.86	94.96	95.06	95.16	95.26	95.36	95.46	95.56	95.66	95.76	95.86	95.96	96.06	96.16	96.26	96.36	96.46	96.56	96.66	96.76	96.86	96.96	97.06	97.16	97.26	97.36	97.46	97.56	97.66	97.76	97.86	97.96	98.06	98.16	98.26	98.36	98.46	98.56	98.66	98.76	98.86	98.96	99.06	99.16	99.26	99.36	99.46	99.56	99.66	99.76	99.86	99.96	100.06
CASH	1.06	1.16	1.26	1.36	1.46	1.56	1.66	1.76	1.86	1.96	2.06	2.16	2.26	2.36	2.46	2.56	2.66	2.76	2.86	2.96	3.06	3.16	3.26	3.36	3.46	3.56	3.66	3.76	3.86	3.96	4.06	4.16	4.26	4.36	4.46	4.56	4.66	4.76	4.86	4.96	5.06	5.16	5.26	5.36	5.46	5.56	5.66	5.76	5.86	5.96	6.06	6.16	6.26	6.36	6.46	6.56	6.66	6.76	6.86	6.96	7.06	7.16	7.26	7.36	7.46	7.56	7.66	7.76	7.86	7.96	8.06	8.16	8.26	8.36	8.46	8.56	8.66	8.76	8.86	8.96	9.06	9.16	9.26	9.36	9.46	9.56	9.66	9.76	9.86	9.96	10.06	10.16	10.26	10.36	10.46	10.56	10.66	10.76	10.86	10.96	11.06	11.16	11.26	11.36	11.46	11.56	11.66	11.76	11.86	11.96	12.06	12.16	12.26	12.36	12.46	12.56	12.66	12.76	12.86	12.96	13.06	13.16	13.26	13.36	13.46	13.56	13.66	13.76	13.86	13.96	14.06	14.16	14.26	14.36	14.46	14.56	14.66	14.76	14.86	14.96	15.06	15.16	15.26	15.36	15.46	15.56	15.66	15.76	15.86	15.96	16.06	16.16	16.26	16.36	16.46	16.56	16.66	16.76	16.86	16.96	17.06	17.16	17.26	17.36	17.46	17.56	17.66	17.76	17.86	17.96	18.06	18.16	18.26	18.36	18.46	18.56	18.66	18.76	18.86	18.96	19.06	19.16	19.26	19.36	19.46	19.56	19.66	19.76																																																																																																																																																																																																																																																																																																																																																																																																																																																																																																																																																																																																																																																																																																																																																																																																																																			

Place Your Want Ad
BY PHONE
Anytime TONIGHT

THE QUICK
Way to Fill Needs
WE 3-7229
8 am. to 5 pm.—WE 3-7711

HELP WANTED FEMALE

GIRL OR WOMAN

For General Office Work

Part Time, 3 Days a Week, Morning or Afternoon, Must Have Knowledge of Typing.

T & R SUPPLY CO.

350 So. Schuyler, Bradley
NO PHONE CALLS

ESTABLISHED MANUFACTURER

SHOES EXPERIENCED WORKERS

BILLING CLERK

Good salary and fringe benefits

TUTHILL SPRING CO.

MONMENCE, ILL. GR 29011-2

HELP WANTED MALE

WANTED—MAN

For General Labor

Day Shift, Starting Rate \$1.75 Per Hour, Age 20-35.

Bring Birth Certificate, Social Security Card and Honorable Discharge, if a Veteran.

AMBER

FILE AND INDEX CO.

NATIONAL company has an opening

for a person with typing skills

and opportunity for advancement.

Write to: National File and Index Co.,

350 So. Schuyler, Bradley, Ill. 60101.

NEED A PART TIME MAN

for your Saturday evening work.

Address: 350 So. Schuyler, Bradley, Ill.

Phone: WE 3-7229.

WANTED EXPERIENCED

man with experience in

the electrical business.

Write to: C. C. Erickson Agency,

350 So. Schuyler, Bradley, Ill.

Phone: WE 3-7229.

WANTED EXPERIENCED

man with experience in

the electrical business.

Write to: C. C. Erickson Agency,

350 So. Schuyler, Bradley, Ill.

Phone: WE 3-7229.

WANTED EXPERIENCED

man with experience in

the electrical business.

Write to: C. C. Erickson Agency,

350 So. Schuyler, Bradley, Ill.

Phone: WE 3-7229.

WANTED EXPERIENCED

man with experience in

the electrical business.

Write to: C. C. Erickson Agency,

350 So. Schuyler, Bradley, Ill.

Phone: WE 3-7229.

WANTED EXPERIENCED

man with experience in

the electrical business.

Write to: C. C. Erickson Agency,

350 So. Schuyler, Bradley, Ill.

Phone: WE 3-7229.

WANTED EXPERIENCED

man with experience in

the electrical business.

Write to: C. C. Erickson Agency,

350 So. Schuyler, Bradley, Ill.

Phone: WE 3-7229.

WANTED EXPERIENCED

man with experience in

the electrical business.

Write to: C. C. Erickson Agency,

350 So. Schuyler, Bradley, Ill.

BARGAIN GUIDE

7 PIECE

Douglas Chrome Dinette Set

Table Opens to 36" x 60"

\$69.95

• YELLOW • RED • TURQUOISE

8 DOWN • \$12 PER WEEK

L-A-S-S-E-R-S

100-166 S. SCHUYLER WE 3-6021

Odd Box Springs and Mattresses

Reg. \$39.95 Simmons Twin Size Box Spring

Reg. \$39.95 Serta Twin Size Box Spring

Reg. \$39.95 Simmons Twin Size Box Spring

Reg. \$39.95 Simmons Twin Size Box Spring

Reg. \$39.95 Simmons Twin Size Box Spring

Reg. \$39.95 Simmons Twin Size Box Spring

Reg. \$39.95 Simmons Twin Size Box Spring

Reg. \$39.95 Simmons Twin Size Box Spring

Reg. \$39.95 Simmons Twin Size Box Spring

Reg. \$39.95 Simmons Twin Size Box Spring

Reg. \$39.95 Simmons Twin Size Box Spring

Reg. \$39.95 Simmons Twin Size Box Spring

Reg. \$39.95 Simmons Twin Size Box Spring

Reg. \$39.95 Simmons Twin Size Box Spring

Reg. \$39.95 Simmons Twin Size Box Spring

Reg. \$39.95 Simmons Twin Size Box Spring

Reg. \$39.95 Simmons Twin Size Box Spring

Reg. \$39.95 Simmons Twin Size Box Spring

Reg. \$39.95 Simmons Twin Size Box Spring

Reg. \$39.95 Simmons Twin Size Box Spring

Reg. \$39.95 Simmons Twin Size Box Spring

Reg. \$39.95 Simmons Twin Size Box Spring

Reg. \$39.95 Simmons Twin Size Box Spring

Reg. \$39.95 Simmons Twin Size Box Spring

Reg. \$39.95 Simmons Twin Size Box Spring

Reg. \$39.95 Simmons Twin Size Box Spring

Reg. \$39.95 Simmons Twin Size Box Spring

Reg. \$39.95 Simmons Twin Size Box Spring

Reg. \$39.95 Simmons Twin Size Box Spring

Reg. \$39.95 Simmons Twin Size Box Spring

Reg. \$39.95 Simmons Twin Size Box Spring

Reg. \$39.95 Simmons Twin Size Box Spring

Reg. \$39.95 Simmons Twin Size Box Spring

Reg. \$39.95 Simmons Twin Size Box Spring

Reg. \$39.95 Simmons Twin Size Box Spring

Reg. \$39.95 Simmons Twin Size Box Spring

Reg. \$39.95 Simmons Twin Size Box Spring

Reg. \$39.95 Simmons Twin Size Box Spring

Reg. \$39.95 Simmons Twin Size Box Spring

Reg. \$39.95 Simmons Twin Size Box Spring

Reg. \$39.95 Simmons Twin Size Box Spring

Reg. \$39.95 Simmons Twin Size Box Spring

Reg. \$39.95 Simmons Twin Size Box Spring

Reg. \$39.95 Simmons Twin Size Box Spring

Reg. \$39.95 Simmons Twin Size Box Spring

Reg. \$39.95 Simmons Twin Size Box Spring

Reg. \$39.95 Simmons Twin Size Box Spring

Reg. \$39.95 Simmons Twin Size Box Spring

Reg. \$39.95 Simmons Twin Size Box Spring

Reg. \$39.95 Simmons Twin Size Box Spring

Reg. \$39.95 Simmons Twin Size Box Spring

Reg. \$39.95 Simmons Twin Size Box Spring

Reg. \$39.95 Simmons Twin Size Box Spring

Reg. \$39.95 Simmons Twin Size Box Spring

Reg. \$39.95 Simmons Twin Size Box Spring

Reg. \$39.95 Simmons Twin Size Box Spring

Reg. \$39.95 Simmons Twin Size Box Spring

Reg. \$39.95 Simmons Twin Size Box Spring

Reg. \$39.95 Simmons Twin Size Box Spring

Reg. \$39.95 Simmons Twin Size Box Spring

Reg. \$39.95 Simmons Twin Size Box Spring

Reg. \$39.95 Simmons Twin Size Box Spring

Reg. \$39.95 Simmons Twin Size Box Spring

Reg. \$39.95 Simmons Twin Size Box Spring

Reg. \$39.95 Simmons Twin Size Box Spring

Reg. \$39.95 Simmons Twin Size Box Spring

Reg. \$39.95 Simmons Twin Size Box Spring

Reg. \$39.95 Simmons Twin Size Box Spring

Reg. \$39.95 Simmons Twin Size Box Spring

Reg. \$39.95 Simmons Twin Size Box Spring

Reg. \$39.95 Simmons Twin Size Box Spring

Reg. \$39.95 Simmons Twin Size Box Spring

Reg. \$39.95 Simmons Twin Size Box Spring

MERCHANDISE

WILD bird seed (top corn) 1 lb. box

2 CUP FLAKES 1 lb. box

WHITE COAT, Spec. \$1.95

4 CUP FLAKES, Spec. \$1.95

4 CUP FLAKES, Spec. \$1.95

4 CUP FLAKES, Spec. \$1.95

4 CUP FLAKES, Spec. \$1.95

4 CUP FLAKES, Spec. \$1.95

4 CUP FLAKES, Spec. \$1.95

4 CUP FLAKES, Spec. \$1.95

4 CUP FLAKES, Spec. \$1.95

4 CUP FLAKES, Spec. \$1.95

4 CUP FLAKES, Spec. \$1.95

4 CUP FLAKES, Spec. \$1.95

4 CUP FLAKES, Spec. \$1.95

4 CUP FLAKES, Spec. \$1.95

4 CUP FLAKES, Spec. \$1.95

4 CUP FLAKES, Spec. \$1.95

4 CUP FLAKES, Spec. \$1.95

4 CUP FLAKES, Spec. \$1.95

4 CUP FLAKES, Spec. \$1.95

4 CUP FLAKES, Spec. \$1.95

4 CUP FLAKES, Spec. \$1.95

4 CUP FLAKES, Spec. \$1.95

4 CUP FLAKES, Spec. \$1.95

4 CUP FLAKES, Spec. \$1.95

4 CUP FLAKES, Spec. \$1.95

4 CUP FLAKES, Spec. \$1.95

4 CUP FLAKES, Spec. \$1.95

4 CUP FLAKES, Spec. \$1.95

4 CUP FLAKES, Spec. \$1.95

4 CUP FLAKES, Spec. \$1.95

4 CUP FLAKES, Spec. \$1.95

4 CUP FLAKES, Spec. \$1.95

4 CUP FLAKES, Spec. \$1.95

4 CUP FLAKES, Spec. \$1.95

4 CUP FLAKES, Spec. \$1.95

4 CUP FLAKES, Spec. \$1.95

4 CUP FLAKES, Spec. \$1.95

4 CUP FLAKES, Spec. \$1.95

4 CUP FLAKES, Spec. \$1.95

4 CUP FLAKES, Spec. \$1.95

4 CUP FLAKES, Spec. \$1.95

4 CUP FLAKES, Spec. \$1.95

4 CUP FLAKES, Spec. \$1.95

4 CUP FLAKES, Spec. \$1.95

4 CUP FLAKES, Spec. \$1.95

4 CUP FLAKES, Spec. \$1.95

4 CUP FLAKES, Spec. \$1.95

4 CUP FLAKES, Spec. \$1.95

4 CUP FLAKES, Spec. \$1.95

4 CUP FLAKES, Spec. \$1.95

4 CUP FLAKES, Spec. \$1.95

4 CUP FLAKES, Spec. \$1.95

4 CUP FLAKES, Spec. \$1.95

4 CUP FLAKES, Spec. \$1.95

4 CUP FLAKES, Spec. \$1.95

4 CUP FLAKES, Spec. \$1.95

4 CUP FLAKES, Spec. \$1.95

4 CUP FLAKES, Spec. \$1.95

4 CUP FLAKES, Spec. \$1.95

4 CUP FLAKES, Spec. \$1.95

4 CUP FLAKES, Spec. \$1.95

4 CUP FLAKES, Spec. \$1.95

4 CUP FLAKES, Spec. \$1.95

4 CUP FLAKES, Spec. \$1.95

4 CUP FLAKES, Spec. \$1.95

4 CUP FLAKES, Spec. \$1.95

4 CUP FLAKES, Spec. \$1.95

4 CUP FLAKES, Spec. \$1.95

4 CUP FLAKES, Spec. \$1.95

4 CUP FLAKES, Spec. \$1.95

4 CUP FLAKES, Spec. \$1.95

4 CUP FLAKES, Spec. \$1.95

4 CUP FLAKES, Spec. \$1.95

4 CUP FLAKES, Spec. \$1.95

4 CUP FLAKES, Spec. \$1.95

4 CUP FLAKES, Spec. \$1.95

4 CUP FLAKES, Spec. \$1.95

4 CUP FLAKES, Spec. \$1.95

4 CUP FLAKES, Spec. \$1.95

4 CUP FLAKES, Spec. \$1.95

REAL ESTATE

SELLING OR BUYING

Do you have a good house you would like to sell immediately? Our

listings are running low, we need more houses for our clients. Call us

now for an appraisal and information on how to sell your property.

No obligation.

WEST KANKAKEE

Drive on 100 ft. frontage. Large living room, full kitchen, full bath, full

basement, full basement, full basement, full basement, full basement,

full basement, full basement, full basement, full basement, full basement,

full basement, full basement, full basement, full basement, full basement,

full basement, full basement, full basement, full basement, full basement,

full basement, full basement, full basement, full basement, full basement,

full basement, full basement, full basement, full basement, full basement,

full basement, full basement, full basement, full basement, full basement,

full basement, full basement, full basement, full basement, full basement,

full basement, full basement, full basement, full basement, full basement,

full basement, full basement, full basement,

