

Olivet Nazarene University

## Digital Commons @ Olivet

---

The Kankakee Daily Journal

University Archives

---

4-22-1960

### April 22, 1960 (Friday) Kankakee Daily Journal

Kankakee Daily Journal

Follow this and additional works at: <https://digitalcommons.olivet.edu/dj>

---

#### Recommended Citation

Kankakee Daily Journal, "April 22, 1960 (Friday) Kankakee Daily Journal" (1960). *The Kankakee Daily Journal*. 2327.

<https://digitalcommons.olivet.edu/dj/2327>

This News Article is brought to you for free and open access by the University Archives at Digital Commons @ Olivet. It has been accepted for inclusion in The Kankakee Daily Journal by an authorized administrator of Digital Commons @ Olivet. For more information, please contact [digitalcommons@olivet.edu](mailto:digitalcommons@olivet.edu).



## Buy Land For Iroquois County Fair Grounds

68-Acre Tract Near Crescent City Purchased

The Iroquois County Farm Bureau board approved the purchase of a 68-acre tract of land north of Crescent City Thursday night to be used as a permanent grounds for the county agricultural and 4-H fair.

The site will be purchased from Harry VanderVliet of St. Anne for \$18,500. VanderVliet will retain title to the mineral rights.

The board's action Thursday night put an end to one of the county's most controversial situations. The fair board and 4-H leaders wanted the fair moved from its present site at Davis Park in Milford.

THE IROQUOIS County board of supervisors had offered the fair association a 40-acre portion of the county poor farm located about two miles east and a mile south of Watseka on Route 1.

But most 4-H leaders favored the larger more centrally located site north of Crescent City. The property to be purchased is located about 2 1/2 miles north of Crescent City off Route 49 along Spring Creek. The land is adjacent to the saw mill.

The fair will be held in Milford as usual this year but plans are under way to hold the fair at the Crescent City site in 1961.

THE FAIR association does not own the site at Milford but has had free use of the park for many years. In recent years, the fair has outgrown the park and livestock tents had to be set up on adjoining land. The board was also unable to erect any permanent buildings for which it could get state funds.

The fair board members approved moving to the Crescent City site at a meeting two weeks ago. All they needed was someone to purchase the property. Thursday night they got that.

The county Farm Bureau board will call a meeting in the very near future to work out arrangements for the use of the new fair site with the fair board and others interested.

## Christensen Quits After Criticism

SPRINGFIELD (AP) — James Christensen, superintendent of the Illinois Criminal Identification Bureau, resigned today because of criticism by his superior of his agency.

Christensen said he submitted his resignation to Director Joseph D. Bibb of the State Safety Department effective May 15.

Christensen declined to say directly whether his action derived from criticism of his agency in connection with the probe of the unsolved slaying of three women in Starved Rock State Park last month.

"It's a result of the criticism of the director of public safety in regard to the bureau of criminal identification," Christensen said.

## Recheck Bridge Approach Bids, Azzarelli Low

A retabulation of bids showed that Azzarelli Construction Co. of Kankakee turned in the low offer for building approaches to the new Court Street Bridge, the Illinois Division of Highways reported today.

The division at first announced that Tealange Construction Co. of Kankakee turned in the apparent low bid of \$328,639. The retabulation showed the Azzarelli bid to be \$318,189.

The state has not yet let the contract for the work.

It includes .42 miles of pavement between Fraser avenue in West Kankakee and Fifth avenue in Kankakee. A portion of this is reconstruction of Court street and a part is new roadway through Alpiner and Bird parks.

## Talks Continue

NEW DELHI, India (AP) — Prime Minister Nehru and Chou En-lai met today for their fourth private talk on the Indian-China border dispute. There have been no official communiques on the discussions over 51,000 disputed square miles of the Himalayan frontier.



A Reminder To Change Clock

Miss Darlene Sanquist of 146 N. Rosewood Ave. reminds Kankakeans that daylight saving time goes into effect Sunday at 2 a.m. when clock watchers are to turn their clocks ahead an hour. The "lost" hour will be regained in the fall when standard time returns to Kankakee. All of Illinois will go on daylight saving time. (Journal photo)

## Jury Ponders Powell Decision

NEW YORK (AP) — A federal court jury resumes deliberations today in the case of Rep. Adam Clayton Powell Jr., charged with income tax evasion.

The jurors—eight women, including one Negro, and four men—were locked up in a hotel overnight after they reported to Judge Frederick van Pelt Bryan that they had been unable to reach a verdict.

The judge said at 10:15 p.m. that the jurors, who received the case at 1 p.m., reported in a note that they had been unable to reach a decision "and since 3 p.m. have been deadlocked."

Powell, 51-year-old Negro Democratic congressman, is charged with falsifying a 1951 income tax return he filed for his wife, jazz pianist Hazel Scott. Miss Scott, who is estranged from Powell and has made her home in Paris for years, is not a defendant in the tax case.

Powell, if convicted, could get up to five years in prison and a \$10,000 fine.

During the trial that began March 8, the judge dismissed two of the three counts in the indictment on the ground the government had failed to substantiate them. The dismissed counts dealt with a joint return filed by Powell and his wife for 1952.

## CAR SWIPED: POUNDS BEAT

PITTSBURGH (AP) — Detective Matt Vaniel, who usually drives a squad car, was back pounding a beat today. The car assigned him was stolen Thursday. Vaniel said he'd continue walking a beat until "I can get the bums who think they're so smart."

## 3 Lutheran Denominations Merge In Colorful Rites

MINNEAPOLIS, Minn. (AP) — Lutheranism, organizationally the most divided branch of American Christianity, today takes a major step toward healing some of the breaches.

Three denominations unite into one.

In colorful ceremonies, 1,000 representatives of the American Lutheran Church, the Evangelical Lutheran Church and the United Evangelical Lutheran Church will seal their long-negotiated merger.

It is the first Lutheran consolidation in the 20th Century to combine bodies of different national backgrounds.

And it paces the field in a developing pattern of Lutheran unification that promises to bring 95 per cent of the eight million members into three large bodies within the next three years.

TODAY'S UNION forms a denomination of 2 1/4 million Lutherans.

It has been in the planning stage for 12 years, with thousands of man-hours spent in working out bylaws, a constitution, doctrinal statement and other merger documents.

The new church takes its name, the American Lutheran Church, from one of its merging constituents.

Dr. Henry F. Schuh, of Columbus, Ohio, president of the old ALC, termed the union "a giant step toward the ultimate goal, one Lutheran Church in America."

It joins Lutherans of German origin from the ALC, those of Norwegian background from the ELC, and those of Danish background from the UELC.

# Stratton Calls Legislature May 3

SPRINGFIELD (UPI) — Gov. Stratton said today the Legislature will convene in emergency session May 3 to deal with an agenda including the Chicago police.

The governor said the agenda will also include an emergency appropriation for the state's relief program, and two minor matters—changes in the justice of the peace law and the election of county auditors.

Stratton also said a fifth possibility might be state aid for the west-central portions of Illinois that were stricken by flood this spring.

Stratton said that the police scandal legislation will aim at "strengthening the position of the new superintendent and police board" in Chicago but there would be no attempt to formulate any state board to govern Chicago police.

"WE WANT A SOLID legal basis" for the existing police authority in Chicago, he said. "We are not going to spend our time in investigations or anything of that sort."

Adamowski has said the abolishment of the ordinance was illegal and that the state must legislate to secure the positions of the superintendents and the board.

On the public aid item, a problem that in itself demanded a special session before the police scandal, erupted Stratton said the Legislature would be asked to appropriate up to 35 million dollars to tide the state's poor relief program over until the regular assembly convenes in January.

The public aid Commission has warned of a pending deficit and Stratton said present funds should last only until Sept. 1.

THE GOVERNOR said the poor relief program is costing the state about five million dollars a month. The regular assembly will have to come up with more money after the emergency funds are allotted to get the program through this year.

Stratton said that legislation concerning county auditors is needed because the new census will push some of the counties past the legal population limit for election of auditors.

Cook County is the only county in which the county board appoints the auditors.

Chicago Mayor Richard Daley in a telegram to Stratton labeled Chicago police reform an "un-called-for subject" of a special legislative session.

# DE GAULLE ARRIVES

Hint Rhee May Dump Second In Command

10,000 In Orderly Korean Protest Against Election

Property Tax Bills To Be Late, Also Higher

Rate Here \$3.13, 4.5-Cent Hike

French Leader Welcomed By Eisenhower

May Seek Bigger Role In World Affairs For France

SEUL, Korea (AP) — An ex-premier today urged President Syngman Rhee to dump Vice President-elect Lee Ki-Poong, target of antigovernment rioting. He indicated Rhee is considering this action.

The ex-premier, Y. T. Pyun, spoke with a reporter after a conference with Rhee at the end of another tense day during which 10,000 teenage students demonstrated in the nearby port of Inchon.

Pyun said Rhee has a definite plan for solving South Korea's grave political crisis. "He has formed certain ideas in his mind regarding what to do," Pyun said. "His ideas are roughly along my lines."

Pyun, formerly a close associate of Rhee, has become increasingly critical of the government's domestic policies. Now an English professor, Pyun has been mentioned as a possible member of a reshuffled Cabinet.

HE PUBLISHED an open letter in a Seoul newspaper urging Rhee to discard Lee.

The Inchon demonstrators shouted for the resignation of Lee, declaring his election with Rhee March 15 was rigged. The youths smashed four windows in headquarters of Rhee's Liberal party.

Unlike the rioting Tuesday in Seoul and other major cities, there was no bloodshed. The police—already severely criticized for killing protest marchers Tuesday—fired three blank shells over the Inchon demonstrators but otherwise made no attempt to disperse them.

The police even provided three water wagons for the students.

It was the third consecutive day of antigovernment demonstrations in Inchon. The port is not one of the five Korean cities put under martial law Tuesday, when at least 125 persons were killed in Seoul and other centers in the near-revolt against the government.

The general public was quiet in Seoul, though there were rumors that university students planned another big protest Saturday.

BUT IN SEOUL opponents of Rhee in the National Assembly scuffled for five minutes in the assembly chamber with deputies from the president's Liberal party.

The fight started when Defense Minister Kim Chung-Yul, explaining why the government imposed martial law, said it was necessary to keep the country from falling into the hands of the enemy.

Continued on Page 8, Column 1

BRADLEY, the tax on property assessed at \$7,500 will be \$266.62, compared to \$225.45 last year.

Bourbonnais taxpayers will have a rate of \$2.93, up 5.4 cents from last year's \$2.879.

The 8.9 high school increase was offset for Bourbonnais taxpayers by a decline in the rates for Bourbonnais grade schools, the county rate, town and road and bridge funds.

The tax on Bourbonnais property assessed at \$7,500 will be \$219.97, compared to \$215.92 last year.

West Kankakee property owners will pay a rate of \$2.71, up 5.3 cents from last year's \$2.664.

Property owners living in the remainder of Kankakee Township but within the boundaries of School District 111 will pay a rate of \$2.696, up 6.4 cents from the \$2.632 rate last year.

Residents of the township living in the Herscher School District will pay a rate of \$1.991, up 6.7 cents from last year's \$1.924.

THE CITY'S TOTAL assessed valuation now stands at \$83,760,632, down \$12,832 from the previous year.

This year's county tax rate totals 19.4 cents, down 3.1 cents from last year. This rate is the same in each of the county's townships.

The county rate is composed of the total of 6.6 cents for corporate purposes, 1.5 cents for the Illinois municipal retirement fund, one cent for the tuberculosis tax, 5.3 cents for the county highway fund and 5 cents for the federal aid matching fund. All are the same as last year's except for the tuberculosis tax which declined 3.1 cents.

The other which make up the \$3.13 Kankakee tax rate are:

City of Kankakee, 51.9 cents, down 2.2 cents from last year.

School District 111, \$2.092, up 8.9 cents.

Airport Authority, 1.2 cents, unchanged.

Park District, 17.3 cents, up 0.8 cents.

Town fund, 5.4 cents, down 0.1 cents.

Road and bridge fund, 8.6 cents, unchanged.

WEST KANKAKEE property owners will pay the same rates with the exception of the Kankakee corporate rate and addition of the West Kankakee Fire Protection District rate. The latter is 10.6 cents this year, down 1.4 cents.

Residents of the remaining areas in the township which are in School District 111 pay the same rates except for the Kankakee corporate and West Kankakee fire rates. They add a Township Fire Protection rate of 8.5 cents, down 0.3 cents from last year.

Certain sections of the city of Kankakee are in Aroma or Bourbonnais townships.

Those living in Aroma Township will pay a town rate of 7.9 cents, up 12 cents from last year; a road and bridge rate of 8 cents, down 0.2 cents from last year.

Continued on Page 8, Column 2

THE HIGHER TAX rates in Kankakee and the two villages are largely due to higher school levies.

The rate for Kankakee property owners who also live in Kankakee Township will be \$3.13 for each \$100 of assessed valuation. Last year's rate was \$3.085.

Thus, the tax on property assessed at \$7,500 will be \$234.75, up \$3.375 from last year.

Residents of the Hillcrest subdivision of Kankakee, which lies in Aroma Township, will pay a rate of \$3.21, down 8.5 cents from last year. The reduction is the result of detaching the area from the Aroma Park Fire Protection District.

The Bradley rate will be \$3.555 compared to last year's \$3.006. A rate boost of 45.9 cents for Bradley Elementary Schools and 8.9 cents for Bradley-Bourbonnais Community High School accounts for the hike.

IN BRADLEY, THE tax on property assessed at \$7,500 will be \$266.62, compared to \$225.45 last year.

Bourbonnais taxpayers will have a rate of \$2.93, up 5.4 cents from last year's \$2.879.

The 8.9 high school increase was offset for Bourbonnais taxpayers by a decline in the rates for Bourbonnais grade schools, the county rate, town and road and bridge funds.

The tax on Bourbonnais property assessed at \$7,500 will be \$219.97, compared to \$215.92 last year.

West Kankakee property owners will pay a rate of \$2.71, up 5.3 cents from last year's \$2.664.

Property owners living in the remainder of Kankakee Township but within the boundaries of School District 111 will pay a rate of \$2.696, up 6.4 cents from the \$2.632 rate last year.

Residents of the township living in the Herscher School District will pay a rate of \$1.991, up 6.7 cents from last year's \$1.924.

THE CITY'S TOTAL assessed valuation now stands at \$83,760,632, down \$12,832 from the previous year.

This year's county tax rate totals 19.4 cents, down 3.1 cents from last year. This rate is the same in each of the county's townships.

The county rate is composed of the total of 6.6 cents for corporate purposes, 1.5 cents for the Illinois municipal retirement fund, one cent for the tuberculosis tax, 5.3 cents for the county highway fund and 5 cents for the federal aid matching fund. All are the same as last year's except for the tuberculosis tax which declined 3.1 cents.

The other which make up the \$3.13 Kankakee tax rate are:

City of Kankakee, 51.9 cents, down 2.2 cents from last year.

School District 111, \$2.092, up 8.9 cents.

Airport Authority, 1.2 cents, unchanged.

Park District, 17.3 cents, up 0.8 cents.

Town fund, 5.4 cents, down 0.1 cents.

Road and bridge fund, 8.6 cents, unchanged.

WEST KANKAKEE property owners will pay the same rates with the exception of the Kankakee corporate rate and addition of the West Kankakee Fire Protection District rate. The latter is 10.6 cents this year, down 1.4 cents.

Residents of the remaining areas in the township which are in School District 111 pay the same rates except for the Kankakee corporate and West Kankakee fire rates. They add a Township Fire Protection rate of 8.5 cents, down 0.3 cents from last year.

Certain sections of the city of Kankakee are in Aroma or Bourbonnais townships.

Those living in Aroma Township will pay a town rate of 7.9 cents, up 12 cents from last year; a road and bridge rate of 8 cents, down 0.2 cents from last year.

Continued on Page 8, Column 2

THE HIGHER TAX rates in Kankakee and the two villages are largely due to higher school levies.

The rate for Kankakee property owners who also live in Kankakee Township will be \$3.13 for each \$100 of assessed valuation. Last year's rate was \$3.085.

Thus, the tax on property assessed at \$7,500 will be \$234.75, up \$3.375 from last year.

Residents of the Hillcrest subdivision of Kankakee, which lies in Aroma Township, will pay a rate of \$3.21, down 8.5 cents from last year. The reduction is the result of detaching the area from the Aroma Park Fire Protection District.

The Bradley rate will be \$3.555 compared to last year's \$3.006. A rate boost of 45.9 cents for Bradley Elementary Schools and 8.9 cents for Bradley-Bourbonnais Community High School accounts for the hike.

IN BRADLEY, THE tax on property assessed at \$7,500 will be \$266.62, compared to \$225.45 last year.

Bourbonnais taxpayers will have a rate of \$2.93, up 5.4 cents from last year's \$2.879.

The 8.9 high school increase was offset for Bourbonnais taxpayers by a decline in the rates for Bourbonnais grade schools, the county rate, town and road and bridge funds.

The tax on Bourbonnais property assessed at \$7,500 will be \$219.97, compared to \$215.92 last year.

West Kankakee property owners will pay a rate of \$2.71, up 5.3 cents from last year's \$2.664.

Property owners living in the remainder of Kankakee Township but within the boundaries of School District 111 will pay a rate of \$2.696, up 6.4 cents from the \$2.632 rate last year.

Residents of the township living in the Herscher School District will pay a rate of \$1.991, up 6.7 cents from last year's \$1.924.

THE CITY'S TOTAL assessed valuation now stands at \$83,760,632, down \$12,832 from the previous year.

This year's county tax rate totals 19.4 cents, down 3.1 cents from last year. This rate is the same in each of the county's townships.

The county rate is composed of the total of 6.6 cents for corporate purposes, 1.5 cents for the Illinois municipal retirement fund, one cent for the tuberculosis tax, 5.3 cents for the county highway fund and 5 cents for the federal aid matching fund. All are the same as last year's except for the tuberculosis tax which declined 3.1 cents.

The other which make up the \$3.13 Kankakee tax rate are:

City of Kankakee, 51.9 cents, down 2.2 cents from last year.

School District 111, \$2.092, up 8.9 cents.

Airport Authority, 1.2 cents, unchanged.

Park District, 17.3 cents, up 0.8 cents.

Town fund, 5.4 cents, down 0.1 cents.

Road and bridge fund, 8.6 cents, unchanged.

WEST KANKAKEE property owners will pay the same rates with the exception of the Kankakee corporate rate and addition of the West Kankakee Fire Protection District rate. The latter is 10.6 cents this year, down 1.4 cents.

Residents of the remaining areas in the township which are in School District 111 pay the same rates except for the Kankakee corporate and West Kankakee fire rates. They add a Township Fire Protection rate of 8.5 cents, down 0.3 cents from last year.

Certain sections of the city of Kankakee are in Aroma or Bourbonnais townships.

Those living in Aroma Township will pay a town rate of 7.9 cents, up 12 cents from last year; a road and bridge rate of 8 cents, down 0.2 cents from last year.

Continued on Page 8, Column 2

THE HIGHER TAX rates in Kankakee and the two villages are largely due to higher school levies.

The rate for Kankakee property owners who also live in Kankakee Township will be \$3.13 for each \$100 of assessed valuation. Last year's rate was \$3.085.

Thus, the tax on property assessed at \$7,500 will be \$234.75, up \$3.375 from last year.

Residents of the Hillcrest subdivision of Kankakee, which lies in Aroma Township, will pay a rate of \$3.21, down 8.5 cents from last year. The reduction is the result of detaching the area from the Aroma Park Fire Protection District.

The Bradley rate will be \$3.555 compared to last year's \$3.006. A rate boost of 45.9 cents for Bradley Elementary Schools and 8.9 cents for Bradley-Bourbonnais Community High School accounts for the hike.

IN BRADLEY, THE tax on property assessed at \$7,500 will be \$266.62, compared to \$225.45 last year.

Bourbonnais taxpayers will have a rate of \$2.93, up 5.4 cents from last year's \$2.879.

The 8.9 high school increase was offset for Bourbonnais taxpayers by a decline in the rates for Bourbonnais grade schools, the county rate, town and road and bridge funds.

The tax on Bourbonnais property assessed at \$7,500 will be \$219.97, compared to \$215.92 last year.

West Kankakee property owners will pay a rate of \$2.71, up 5.3 cents from last year's \$2.664.

Property owners living in the remainder of Kankakee Township but within the boundaries of School District 111 will pay a rate of \$2.696, up 6.4 cents from the \$2.632 rate last year.

Residents of the township living in the Herscher School District will pay a rate of \$1.991, up 6.7 cents from last year's \$1.924.

THE CITY'S TOTAL assessed valuation now stands at \$83,760,632, down \$12,832 from the previous year.

This year's county tax rate totals 19.4 cents, down 3.1 cents from last year. This rate is the same in each of the county's townships.

The county rate is composed of the total of 6.6 cents for corporate purposes, 1.5 cents for the Illinois municipal retirement fund, one cent for the tuberculosis tax, 5.3 cents for the county highway fund and 5 cents for the federal aid matching fund. All are the same as last year's except for the tuberculosis tax which declined 3.1 cents.

The other which make up the \$3.13 Kankakee tax rate are:

City of Kankakee, 51.9 cents, down 2.2 cents from last year.

School District 111, \$2.092, up 8.9 cents.

Airport Authority, 1.2 cents, unchanged.

Park District, 17.3 cents, up 0.8 cents.

Town fund, 5.4 cents, down 0.1 cents.

Road and bridge fund, 8.6 cents, unchanged.

WEST KANKAKEE property owners will pay the same rates with the exception of the Kankakee corporate rate and addition of the West Kankakee Fire Protection District rate. The latter is 10.6 cents this year, down 1.4 cents.

Residents of the remaining areas in the township which are in School District 111 pay the same rates except for the Kankakee corporate and West Kankakee fire rates. They add a Township Fire Protection rate of 8.5 cents, down 0.3 cents from last year.

Certain sections of the city of Kankakee are in Aroma or Bourbonnais townships.

Those living in Aroma Township will pay a town rate of 7.9 cents, up 12 cents from last year; a road and bridge rate of 8 cents, down 0.2 cents from last year.

Continued on Page 8, Column 2

THE HIGHER TAX rates in Kankakee and the two villages are largely due to higher school levies.

The rate for Kankakee property owners who also live in Kankakee Township will be \$3.13 for each \$100 of assessed valuation. Last year's rate was \$3.085.

Thus, the tax on property assessed at \$7,500 will be \$234.75, up \$3.375 from last year.

Residents of the Hillcrest subdivision of Kankakee, which lies in Aroma Township, will pay a rate of \$3.21, down 8.5 cents from last year. The reduction is the result of detaching the area from the Aroma Park Fire Protection District.

The Bradley rate will be \$3.555 compared to last year's \$3.006. A rate boost of 45.9 cents for Bradley Elementary Schools and 8.9 cents for Bradley-Bourbonnais Community High School accounts for the hike.

IN BRADLEY, THE tax on property assessed at \$7,500 will be \$266.62, compared to \$225.45 last year.

Bourbonnais taxpayers will have a rate of \$2.93, up 5.4 cents from last year's \$2.879.

The 8.9 high school increase was offset for Bourbonnais taxpayers by a decline in the rates for Bourbonnais grade schools, the county rate, town and road and bridge funds.

The tax on Bourbonnais property assessed at \$7,500 will be \$219.97, compared to \$215.92 last year.

West Kankakee property owners will pay a rate of \$2.71, up 5.3 cents from last year's \$2.664.

Property owners living in the remainder of Kankakee Township but within the boundaries of School District 111 will pay a rate of \$2.696, up 6.4 cents from the \$2.632 rate last year.

Residents of the township living in the Herscher School District will pay a rate of \$1.991, up 6.7 cents from last year's \$1.924.

THE CITY'S TOTAL assessed valuation now stands at \$83,760,632, down \$12,832 from the previous year.

This year's county tax rate totals 19.4 cents, down 3.1 cents from last year. This rate is the same in each of the county's townships.

The county rate is composed of the total of 6.6 cents for corporate purposes, 1.5 cents for the Illinois municipal retirement fund, one cent for the tuberculosis tax, 5.3 cents for the county highway fund and 5 cents for the federal aid matching fund. All are the same as last year's except for the tuberculosis tax which declined 3.1 cents.

The other which make up the \$3.13 Kankakee tax rate are:

City of Kankakee, 51.9 cents, down 2.2 cents from last year.

School District 111, \$2.092, up 8.9 cents.

Airport Authority, 1.2 cents, unchanged.

Park District, 17.3 cents, up 0.8 cents.

Town fund, 5.4 cents, down 0.1 cents.

Road and bridge fund, 8.6 cents, unchanged.

WEST KANKAKEE property owners will pay the same rates with the exception of the Kankakee corporate rate and addition of the West Kankakee Fire Protection District rate. The latter is 10.6 cents this year, down 1.4 cents.

Residents of the remaining areas in the township which are in School District 111 pay the same rates except for the Kankakee corporate and West Kankakee fire rates. They add a Township Fire Protection rate of 8.5 cents, down 0.3 cents from last year.

Certain sections of the city of Kankakee are in Aroma or Bourbonnais townships.

Those living in Aroma Township will pay a town rate of 7.9 cents, up 12 cents from last year; a road and bridge rate of 8 cents, down 0.2 cents from last year.

Continued on Page 8, Column 2

THE HIGHER TAX rates in Kankakee and the two villages are largely due to higher school levies.

The rate for Kankakee property owners who also live in Kankakee Township will be \$3.13 for each \$100 of assessed valuation. Last year's rate was \$3.085.

Thus, the tax on property assessed at \$7,500 will be \$234.75, up \$3.375 from last year.

Residents of the Hillcrest subdivision of Kankakee, which lies in Aroma Township, will pay a rate of \$3.21, down 8.5 cents from last year. The reduction is the result of detaching the area from the Aroma Park Fire Protection District.

The Bradley rate will be \$3.555 compared to last year's \$3.006. A rate boost of 45.9 cents for Bradley Elementary Schools and 8.9 cents for Bradley-Bourbonnais Community High School accounts for the hike.

IN BRADLEY, THE tax on property assessed at \$7,500 will be \$266.62, compared to \$225.45 last year.

Bourbonnais taxpayers will have a rate of \$2.93, up 5.4 cents from last year's \$2.879.

The 8.9 high school increase was offset for Bourbonnais taxpayers by a decline in the rates for Bourbonnais grade schools, the county rate, town and road and bridge funds.

The tax on Bourbonnais property assessed at \$7,500 will be \$219.97, compared to \$215.92 last year.

West Kankakee property owners will pay a rate of \$2.71, up 5.3 cents from last year's \$2.664.

Property owners living in the remainder of Kankakee Township but within the boundaries of School District 111 will pay a rate of \$2.696, up 6.4 cents from the \$2.632 rate last year.

Residents of the township living in the Herscher School District will pay a rate of \$1.991, up 6.7 cents from last year's \$1.924.

THE CITY'S TOTAL assessed valuation now stands at \$83,760,632, down \$12,832 from the previous year.

This year's county tax rate totals 19.4 cents, down 3.1 cents from last year. This rate is the same in each of the county's townships.

The county rate is composed of the total of 6.6 cents for corporate purposes, 1.5 cents for the Illinois municipal retirement fund, one cent for the tuberculosis tax, 5.3 cents for the county highway fund and 5 cents for the federal aid matching fund. All are the same as last year's except for the tuberculosis tax which declined 3.1 cents.

The other which make up the \$3.13 Kankakee tax rate are:

City of Kankakee, 51.9 cents, down 2.2 cents from last year.

School District 111, \$2.092, up 8.9 cents.

Airport Authority, 1.2 cents, unchanged.

Park District, 17.3 cents, up 0.8 cents.

Town fund, 5.4 cents, down 0.1 cents.

Road and bridge fund, 8.6 cents, unchanged.

WEST KANKAKEE property owners will pay the same rates with the exception of the Kankakee corporate rate and addition of the West Kankakee Fire Protection District rate. The latter is 10.6 cents this year, down 1.4 cents.

Residents of the remaining areas in the township which are in School District 111 pay the same rates except for the Kankakee corporate and West Kankakee fire rates. They add a Township Fire Protection rate of 8.5 cents, down 0.3 cents from last year.

Certain sections of the city of Kankakee are in Aroma or Bourbonnais townships.

Those living in Aroma Township will pay a town rate of 7.9 cents, up 12 cents from last year; a road and bridge rate of 8 cents, down 0.2 cents from last year.

Continued on Page 8, Column 2

French Leader Welcomed By Eisenhower

May Seek Bigger Role In World Affairs For France

WASHINGTON (AP) — French President Charles de Gaulle flew into Washington today to receive a warm welcome from President Eisenhower, and open four days of summit strategy talks.

He is expected to make a new bid for a bigger French voice in Allied decisions on global strategy in the conflict with Soviet communism, but not to press the point particularly in his talks with the President.

Eisenhower personally headed the welcoming party which waited in a warm sun at National Airport as De Gaulle's special Air France flight from Toronto, Canada, came in.

De Gaulle, whose wife is accompanying him on this American visit, spent four days in Canada. After a stay here, they will visit New York, San Francisco and New Orleans before leaving the country.

EISENHOWER and De Gaulle had met most recently last December when Eisenhower visited Paris for a conference of Western leaders. It was at that time that the Western chiefs decided to meet with Soviet Premier Nikita Khrushchev in Paris this spring.

The East-West summit session will begin in the French capital May 16.

This visit is De Gaulle's first to Washington in 15 years.

The 69-year-old French general and political leader was greeted as he stepped from the plane with a display of full military honors rendered by units of the Army, Navy, Air Force and Marines.

Within a few minutes after his plane stopped cannons began booming out a 21-gun salute and a military band sounded four ruffles and flourishes, followed by the playing of "The Marseillaise" and "The Star Spangled Banner."

From the airport, De Gaulle's route across the Potomac River and into Washington was by way of 14th St. and New York Ave. Along the flag-decked parade course, thousands of sightseers, citizens and government employees gathered to see the famous French leader make his ceremonial trip into the city with Eisenhower.

FOUR HOURS after De Gaulle's arrival, he was taken to the White House.

Continued on Page 8, Column 1

THE HIGHER TAX rates in Kankakee and the two villages are largely due to higher school levies.

The rate for Kankakee property owners who also live in Kankakee Township will be \$3.13 for each \$100 of assessed valuation. Last year's rate was \$3.085.

Thus, the tax on property assessed at \$7,500 will be \$234.75, up \$3.375 from last year.

Residents of the Hillcrest subdivision of Kankakee, which lies in Aroma Township, will pay a rate of \$3.21, down 8.5 cents from last year. The reduction is the result of detaching the area from the Aroma Park Fire Protection District.

The Bradley rate will be \$3.555 compared to last year's \$3.006. A rate boost of 45.9 cents for Bradley Elementary Schools and 8.9 cents for Bradley-Bourbonnais Community High School accounts for the hike.

IN BRADLEY, THE tax on property assessed at \$7,500 will be \$266.62, compared to \$225.45 last year.

Bourbonnais taxpayers will have a rate of \$2.93, up 5.4 cents from last year's \$2.879.

The 8.9 high school increase was offset for Bourbonnais taxpayers by a decline in the rates for Bourbonnais grade schools, the county rate, town and road and bridge funds.

The tax on Bourbonnais property assessed at \$7,500 will be \$219.97, compared to \$215.92 last year.

West Kankakee property owners will pay a rate of \$2.71, up 5.3 cents from last year's \$2.664.

Property owners living in the remainder of Kankakee Township but within the boundaries of School District 111 will pay a rate of \$2.696, up 6.4 cents from the \$2.632 rate last year.

Residents of the township living in the Herscher School District will pay a rate of \$1.991, up 6.7 cents from last year's \$1.924.

THE CITY'S TOTAL assessed valuation now stands at \$83,760,632, down \$12,832 from the previous year.

This year's county tax rate totals 19.4 cents, down 3.1 cents from last year. This rate is the same in each of the county's townships.

The county rate is composed of the total of 6.6 cents for corporate purposes, 1.5 cents for the Illinois municipal retirement fund, one cent for the tuberculosis tax, 5.3 cents for the county highway fund and 5 cents for the federal aid matching fund. All are the same as last year's except for the tuberculosis tax which declined 3.1 cents.

The other which make up the \$3.13 Kankakee tax rate are:

City of Kankakee, 51.9 cents, down 2.2 cents from last year.

School District 111, \$2.092, up 8.9 cents.

Airport Authority, 1.2 cents, unchanged.

Park District, 17.3 cents, up 0.8 cents.

Town fund, 5.4 cents, down 0.1 cents.

Road and bridge fund, 8.6 cents, unchanged.

WEST KANKAKEE property owners will pay the same rates with the exception of the Kankakee corporate rate and addition of the West Kankakee Fire Protection District rate. The latter is 10.6 cents this year, down 1.4 cents.

Residents of the remaining areas in the township which are in School District 111 pay the same rates except for the Kankakee corporate and West Kankakee fire rates. They add a Township Fire Protection rate of 8.5 cents, down 0.3 cents from last year.

Certain sections of the city of Kankakee are in Aroma or Bourbonnais townships.

Those living in Aroma Township will pay a town rate of 7.9 cents, up 12 cents from last year; a road and bridge rate of 8 cents, down 0.2 cents from last year.

Continued on Page 8, Column 2

THE HIGHER TAX rates in Kankakee and the two villages are largely due to higher school levies.

The rate for Kankakee property owners who also live in Kankakee Township will be \$3.13 for each \$100 of assessed valuation. Last year's rate was \$3.085.

Thus, the tax on property assessed at \$7,500 will be \$234.75, up \$3.375 from last year.

Residents of the Hillcrest subdivision of Kankakee, which lies in Aroma Township, will pay a rate of \$3.21, down 8.5 cents from last year. The reduction is the result of detaching the area from the Aroma Park Fire Protection District.

The Bradley rate will be \$3.555 compared to last year's \$3.006. A rate boost of 45.9 cents for Bradley Elementary Schools and 8.9 cents for Bradley-Bourbonnais Community High School accounts for the hike.

IN BRADLEY, THE tax on property assessed at \$7,500 will be \$2











## House Cuts In Aid Seen

WASHINGTON (AP)—Foreign aid critics set out today to whittle a billion and a half dollars from the \$1,039,500,000 program approved Thursday by the House.

## Hear Kickback Plan In Auto Off-Cuff Buying

WASHINGTON (AP)—Senators were told Thursday that some auto dealers and finance companies gouge the public through a "kickback" system that boosts installment purchase costs.

The testimony was given to a Senate Banking subcommittee by John L. O'Brien, president and general manager of the Better Business Bureau of Greater St. Louis.

He said investigation of the practices was undertaken at the request of responsible automobile dealers, whom he described as making up the vast majority.

O'Brien testified at a hearing on a bill by Sen. Paul H. Douglas (D-Ill.), the subcommittee chairman, to require disclosure of the full amount of finance charges and interest rates on installment purchases.

O'Brien said finance companies, and also some commercial banks, pay what amounts to "finder's fee" for time payment contracts turned over to them by automobile dealers.

Douglas wanted to know if O'Brien had any evidence to back up his testimony. O'Brien said he had supporting affidavits and also copies of multiple rate charts available to dealers.

He cited charts which he said showed that the finance company's rate to the dealer was 7 per cent but that the dealer could add 3%, \$150, or \$100 to the interest charge and get a rebate of the amount from the finance company.

O'Brien said 24 states have enacted laws to control the finance business in varying degrees. He cited particularly the Ohio law which puts a top limit of 18 per cent on auto finance deals and limits any rebate to the dealer to 2 per cent.

**Jury Rules Lund Innocent Of Drunk Driving**

A County Court jury Thursday found Elbert T. Lund, 44, 510 S. South Ave., innocent of driving while under the influence of alcohol.

Judge Robert Goodyear of Watseka heard the case on a change of venue from Judge Irwin C. Taylor of Kankakee.

Lund was arrested by Kankakee police Jan. 31 after his car struck a tree at Cobb boulevard and the entrance to the Beckman Park boat harbor.

The jury returned the verdict Thursday afternoon and it was sealed overnight and opened in court today.



Park District Youngsters Dance

These costumed youngsters were among the hundreds who danced Thursday night at the Kankakee Park District Sixth Annual Square Dance Festival in Civic Auditorium.

On motion of Rep. Porter Hardy Jr. (D-Ill.), the House authorized an expenditure of \$75 million dollars in economic aid to America's military allies, only if information on the program is furnished congressional committees or the General Accounting Office on demand.

The House action left untouched, pending debate on appropriations, the major part of the foreign aid program outlined by President Eisenhower.

Passman said his subcommittee is conducting the most extensive hearings ever held on foreign aid and the closed-door sessions will continue for at least another month.

**Area Methodist Ministers To Meet Monday**

The Kankakee Subdistrict Methodist Ministers Group will meet at 11 a.m. Monday in the Bandfield Methodist Church.

The meeting will be an orientation for the full convocation of the general board of evangelism to be held in October in Bloomington. Nearly 5,000 ministers from throughout the United States and territories will attend the full convocation.

The Rev. Walter Teesdale, Watseka, district secretary of evangelism, will address the Kankakee subdistrict group on the subject, "The Area Program of Evangelism."

Following Monday's meeting, the ministers and their families will have covered dish lunch.

**Annual Rabbit Show Sunday At Chebanse**

The 15th annual competitive table show of the Kankakee Valley Rabbit Breeders' Inc. will be held Sunday in the Chebanse Grade School.

The show will be open from 7 until 4 p.m. to the public.

Between 350 and 400 entries are expected in the show, including a number of out of the state.

## Bradley Village License Fees Due May 1

Bradley village license fees, ranging from \$1 to \$1,500, come due May 1.

The minimum fee is \$1 for male dogs. The license for female dogs is \$1. Dogs must have a current rabies tag in order to get a license.

The maximum license fee is \$1,500 for a cabaret. Other licenses are \$5 each for cigar and soft drink retailers; \$25 for the first taxi and \$5 for each additional taxi for each taxable company; \$5 for skating rinks; \$200 for clubs which dispense liquor; \$400 for package liquor stores and \$600 for taverns.

## Fall Bride Dies In Train-Car Crash

ELGIN (AP)—A young wife was killed and her husband critically injured when their auto smashed into the second diesel unit of an Illinois Central Railroad streamliner Thursday.

The victim was Mrs. Joan Mayes, 19. Her husband, Robert, 24, was hospitalized in critical condition.

The auto and the streamliner, Land of Corn, crashed at a crossing three miles south of Elgin. The crossing is protected by a semi-flasher lights and bell signals.

Police said it was impossible to ascertain whether Mayes or her husband was driving at the time of the accident. The couple married last November.

## Executive Board Of PTA Meets In Grant Park

GRANT PARK (INS)—The executive board of the parent Teacher Association met in the grade school cafeteria on Monday evening.

President Barney Edwards presided and plans for projects were discussed. Mrs. Wesley Hamann presented the secretary's report.

The chairman of the ways and means committee, Mrs. Harris Hasonberger, reported the annual PTA play netted a total of \$207.42.

The group voted \$5 to the school stage fund. The next board meeting will be held May 10 at the school.

**R & S SHOES**  
THICK CREPE SOLES  
ELASTIC GORE SLIP-ON  
CUSHION INSOLES  
CLOTH WEAVE

**YORKSHIRE SHOES FOR MEN**  
\$299  
ANOTHER OUTSTANDING VALUE!

## Crash Toll 3; Charge CTA Bus Driver

CHICAGO (AP)—A third death resulted today from the crash of an automobile and a CTA bus on the South Side Thursday.

Mrs. Eleanor Thomson, 73, died in Holy Cross Hospital. The others killed were her brother-in-law, Charles Thomson, 72, and Mrs. Sara Dole, 85, of Peotone.

Bus driver Otwa Clemons, 25, was charged with driving too fast and with failing to give aid and information after the collision.

## Wants Nixon To Start Campaign

CLEVELAND, Ohio (AP)—Republican Gov. Wesley Powell of New Hampshire says he believes Vice President Richard M. Nixon should get out and campaign more.

Powell, a Nixon supporter, threw out the political comments Thursday while making a pitch for his state at a vacationland.

"This election is no shoo-in," said Powell. "Nixon ought to take into consideration that there is a fight on. We have six months before the election. That is none too long for Nixon to visit each of the 50 states, and none of them should be overlooked."

**NOW!**  
The greatest show of savings on earth  
**Hotpoint CARNIVAL of VALUES**  
at **Wm. H. STEVENS**  
Your **Hotpoint** Dealer  
**YOU CAN OWN AN Automatic-Electric DRYER**  
AS LOW AS  
**\$149.95**  
EVEN LESS W/TRADE

**Special Offer!**  
TRY A FUME-FREE ELECTRIC DRYER IN YOUR HOME FOR 60 DAYS  
All Your Money Back  
if you are not completely satisfied. Prove to yourself that nothing (not even the sun) dries clothes cleaner, faster, fresher!  
**COME IN FOR DETAILS!**

Applies easily with brush or roller.  
Dries fast, leaves no odor. Fully washable.  
1 coat serves as both primer and finish.

**Reg. 4.98 Gal.**  
**\$3.99** Gallon  
WE GIVE  
**S&H GREEN STAMPS**

**WILSON'S PAINTS**  
135 N. SCHUYLER DOWNTOWN KANKAKEE

**THERE IS STILL TIME TO MAKE AN EXTRA SPECIAL**  
OPEN 'TIL 9 P. M. TONIGHT  
BUY ON THE NEW **VALIANT**  
Priced as Low as **\$2053**  
**OR LESS**  
DEPENDING ON THE VALUE OF YOUR TRADE-IN  
**UPTOWN Sales, Inc.**  
545 S. Washington  
Phone WE 3-3378

**Plus!**  
Get a **\$140 100 AMP. (8 circuit)** Service, Includes Wiring of Dryer  
**CUSTOMER COST ONLY \$29.95** With Purchase of Dryer  
(One family dwellings only)

**WE SELL AND SERVICE**  
41 YEARS OF BUSINESS • ILLINOIS' OLDEST HOTPOINT DEALER  
**Wm. H. STEVENS Appliances**  
242 W. Jeffery WE 3-4813

**WARDS MONTGOMERY WARD**  
Here's How To Get To Wards Warehouse and Outdoor Sales Area  
Warehouse 465 South Washington  
SOUTH WASHINGTON AVENUE  
Bear Brand  
SHOP TONIGHT TO 9  
See Our Tremendous Outdoor Boat & Motor Show!  
An Outdoor Sales Arena packed with Boats, Motors, Trailers, Camping Equipment, Playground Equipment and Sporting Goods.

**NEW 1960 SEA KING boats**  
SPORT-STYLE AUTO-TOPT 12-FT. ALUMINUM BOAT  
Saves trailer expense. Rustproof heavy-gauge aluminum. Wood seats. \$169 \$17 DOWN

**BUDGET-PRICED 15-FT. ALUMINUM GAD-A-BOAT**  
New "Lapstrake" hull. Plexiglass windshield, rigid steering wheel, upholstered front seat. \$630 \$63 DOWN

**FULLY-EQUIPPED 15-FT. FIBERGLASS RUNABOUT**  
Sleek clipper bow. Wrap-around windshield, upholstered seats, steering wheel, lights. Red decking. \$825 \$82 DOWN

**NEW 60 HP SEA-KING**  
Balanced V-4 engine speeds to over 35 mph. Has a thermostat control. \$825

**NEW 35 HP SEA-KING**  
Fast and reliable. Speeds from 1 1/2 to 33 mph. Manual starting. \$460

**RUGGED SEA-KING 5 HP "FISHIN' 5"**  
With "go-anywhere" power! Smooth as silk from 1 1/2 to all-out 12 mph. Manual starting. \$210

**25 HP Outboard \$399 15 HP Outboard \$325 3 HP Outboard \$99**

**T-FRAME ECONOMY TRAILER**  
Pre-season Price  
Loaded for 600 lbs., holds 14-ft. boat. Bow stop, forks. Padded bunk. \$77

**SALE! Modern 6-Player Croquet Set for Family Fun**  
Tapered rack holds 6 colorful plastic balls, stakes, 10 arches, 24" tapered mallets. Reg. 9.95 **7.88**

**SALE! 9x9-ft. umbrella tent**  
—quick, easy to set up  
Room for 3 sleeping bags. Tightly woven boat sail material, water-repellent. \$49.88 Reg. \$2.95

**SALE! Hardwood camp stool**  
Reg. 1.29 **47c**  
Durable hardwood frame bolted for strength. Heavy 1 1/2" canvas seat, 16 1/2-in. high.

**SALE! New 10-play gym**  
has 3 swings, 6-ft. slide  
Special purchase! Fun-packed, extra sturdy 2" steel tubing. Top bar 8'6", legs 7'4". \$2 DOWN **26.88**

**SALE! 5-piece red plaid outing kit—was 9.45**  
Rayon zipper case with water repellent lining. Two 1-qt. vacuum bottles, 2 food boxes. **4.88**

**GRAND OPENING**  
**Outdoor Sales Arena**  
NEXT TO OUR WAREHOUSE—ACROSS FROM BEAR BRAND HOISERY  
BUY ON WARDS CREDIT PLAN

**TRUCKLOAD SALE FERTILIZER**  
A Complete Lawn Food  
Enriched 10% nitrogen, 6% phosphate, and 4% potash formula. 50 pounds will feed an area up to 5000 square feet.  
REG. 3.89 **2.22** 50-Lb. Bag

**SAVE ON SHADE TREES**  
Cut Leaf Birch ..... 6.25  
Weeping Willow 2.59  
White Birch ..... 5.25  
Apple ..... 1.98  
Pear ..... 2.19  
Sweet Cherry ..... 2.95  
Mountain Ash ..... 5.45  
Silver Maple ..... 2.59

**SALE! 22" rotary mowers**  
2.25 HP—22" **47.50**  
You can't scalp uneven lawns—staggered wheel design won't permit. Leaf wheels from 3/4" close.

**Self propelled!**  
NEW IN INVENTOR DELUXE ROTARY **89.50**  
Handle down to stop, release to propel and oil you do it guide all 21" self propelled ..... 99.50

**ROSE BUSHES 66c**

**SALE! Wards evergreens for landscaping accent**  
Top values now—in time for spring planting. Guaranteed to grow many varieties.  
REG. 19.95 **3.59**

**BAR-B-Q GRILLS 14.88**  
with motor split and food.

**BATS 1.18**  
1.98 VALUE Little League

**HIBACHI STOVES 1.22**  
REG. 2.39

**SALE! 4 lbs. Grass Seed 88c**  
Fast growing Kwik Kover seed. Contains over 500% permanent seed covers. Bore spots quickly.

**SALE! Garden Hoe, 5 1/2" wide 9/16" DIA. 4.44**  
SALE! 22-Inch Rotary Tiller \$99  
SALE! Garden Hoe, 5 1/2" wide 9/16" DIA. 4.44  
SALE! Garden Hoe, 5 1/2" wide 9/16" DIA. 4.44

**SALE! Garden Barrow 6.99**  
3 cubic feet steel tray. Square nose adds balance.

**SALE! 20" Sprayer 11.95**  
Accurate, waste free coverage. Settings.

**"Lever Lock Hose Nozzle 1.19**  
Hold and adjust spray with one hand. Chrome finish.



### Vacation Church School Institute Here Next Week

Kankakee will host one of its 45 different communities in the state in which vacation church school institutes will be held next week. Sponsored by the Illinois Council of Churches, the institute in Kankakee will be at First Methodist Church, United Brethren Church. It is scheduled for Tuesday, Wednesday, Thursday, Friday and Saturday, April 25, 26, 27, 28 and 29.

The institutes involve nine teams of six members each who are giving their time and service so that local church workers might have an opportunity to plan for effective vacation church schools this summer.

At First EUB delegates from the churches are being asked to take their own sack lunches. Coffee will be provided by the host church. A registration fee will be charged.

This special series of institutes is aimed at all persons who have any responsibility in vacation church schools, as well as pastors and other interested persons in the field of Christian education.

The purpose is three-fold: to help teachers understand the teaching responsibility in churches; to introduce methods and skills, and to acquaint participants with new resources available.

Much of the time in the institute will be spent in age-group work—kindergarten, primary, junior and high school. In addition, a special workshop is planned for those responsible for administration of vacation church schools. There will also be two general sessions which will provide opportunity for worship and fellowship.

### 37 Receive YM Swimming Awards

Thirty-nine boys received swimming awards at the Kankakee YMCA Wednesday night as the organization's swim team was honored.

Awards included 11 for boys in the cadet division (14 years old); 16 for mid-levels (10 to 13 years old); 11 for prep (11-12 years old); and one for intermediate.

James Rickard, coach of the team, presented the awards and also the 10 ribbons won at the district YMCA swim meet in Chicago, which was the team's first year by the team members. Rickard was also presented an award.

Leadership awards for parents and leaders aiding the program went to Frank Schmitz, Mary Ruth Bunker and Carl Coleman. Carl Coleman was guest speaker at the subject, "You Can't Win Them All." Wesley Walker gave the welcome. Refreshments were served.

During the season the team had a 53 dual meet record, won 10 in a triangular and won the 10 ribbons in district.

### HINT RHEE—

Continued from Page 1  
marital law during the right Tuesday, said:  
"The students resorted to indiscriminate violence, murdered police, set fire to police stations and other government buildings."  
"Tell the truth! Retract your statement!" shouted Chang Tack Sang, an Independent.  
Leo Fiallo of the opposition Democratic party rushed to the rostrum and shoved Kim. Others dashed up, trying to calm Leo. Shouting and confusion followed. A recess was called and order was restored.

The assembly, in which the liberals held 151 of the 234 seats, formed a 20-man committee to investigate the national crisis. It also voted to give 20 percent of its April salary to the families of those killed in the riots.

### FRENCH—

Continued from Page 1  
arrival Eisenhower and he was scheduled to start the first of a series of pre-summit strategy talks. On some issues they hold sharply differing views.

Outstanding among their disagreements is the question of how to deal with the Soviet Union on the issue of Berlin. De Gaulle says this East-West dispute should be dropped from summit discussion in the interest of trying to avoid a deadlock at the outset. Eisenhower feels it is the most critical problem slated for negotiation.

### Boost Crop Yields With Bumper Crop

ASHKUM FERTILIZER CO.  
Ashkum, Illinois

## Local News In Brief

### BIRTHS

The following births were reported today from St. Mary's Hospital:  
Mr. and Mrs. James Scanlon of Hershey are parents of a boy and sixth child born Thursday.  
Mr. and Mrs. James D. Bradley of 24 N. Randolph Ave., Bradley, are parents of a boy and fifth child born Thursday.  
Mr. and Mrs. Fred Fredrick of 40 E. Belmont Ct., Bourbonnais, are parents of a girl and first child born Thursday.  
Mr. and Mrs. Eugene Demers of 694 S. Chicago Ave. are parents of a girl and fifth child born Thursday.  
Mr. and Mrs. Lloyd Waggoner of 40 E. Belmont Ct., Bourbonnais, are parents of a girl and first child born Thursday.  
Mr. and Mrs. Norman Grob of 693 Country Club Dr. are parents of a girl and first child born Thursday. The mother is the former Patricia Scanlon.  
Mr. and Mrs. Herman Neill of St. Anne are parents of a boy and second child born Thursday.  
Mr. and Mrs. Ronald Bissone of 500 Evergreen Lane, Hershey, are parents of a boy and third child born Thursday.  
Mr. and Mrs. Harold Lambert of Hershey are parents of a boy and fourth child born Thursday.

### RATE—

Continued from Page 1  
and a hard road and a bad rate of 61 cents, down 0.6 cents from last week.  
**RESIDENTS OF Bourbonnais** Township will pay a town rate of 12.5 cents, down 0.8 cents from last week.  
In other areas, the total rates are affected by the rate of 61 cents, down 0.6 cents from last week.

### ROCK RITES

Federal services for William I. Moore, 85, of 253 S. Fraser Ave., who died Sunday, were held at the Hickory Funeral Home, 1000 N. Main St., at 10 a.m. The Rev. James G. Parker officiated and burial was at Mount Grove Cemetery. Pallbearers were T. M. Beaumont, Ernest Erickson, Carlos Morrow, Ray Pepin, Emory Pratt, and Edward Kondo.

### FIREMAN HOSPITALIZED

John Freeman Edward Barrett, 52, of Greenwood Ave., is reported resting easily in St. Mary's Hospital where he was taken this morning for observation. Barrett complained of pain in his right arm during the night.

### MARRIAGE LICENSES

Eugene Nolan, 31, Chicago, and Patricia M. Mac, 31, East Moline, were married at St. Mary's. Pauline Dawson, 46, Plainfield, and Pauline Dawson, 46, Plainfield, were married at St. Mary's.

### GOOD CONDITION

Harold Gillespie, manager of the Olivet Nazarene College student center, was reported in good condition at St. Mary's Hospital after falling and breaking his ankle about 10 a.m. Thursday. Gillespie reportedly slipped and fell in a pool of water on the floor.

### DEATHS

James Hayes, 75, 138 S. Enfrances Ave., Kankakee, died at 10:20 a.m. Thursday at St. Mary's Hospital. Mother, St. Louis, 84, St. Mary's Hospital.

### NEED MONEY FAST

KANKAKEE CITIZENS CO.  
198 South Schuyler  
Since 1927

### Seeking Current Income, and the possibility of long-term growth?

**Horace Mann Fund Inc.**  
216 E. MONROE ST., SPRINGFIELD, ILL.

A diversified, managed Mutual Fund invests in common stocks, preferred stocks and bonds selected for these objectives. For free prospectus, call or drop us a line. There will be no obligation.

Send to:  
**HORACE MANN FUND, Inc.**  
216 E. Monroe St., Springfield, Ill.

NAME \_\_\_\_\_ ADDRESS \_\_\_\_\_ PHONE \_\_\_\_\_

## Fire Razes Bohk Garage, Workshop

GRANT PARK (JNS) — The Bohk family garage and workshop were destroyed by fire this afternoon. The fire started in the garage and spread to the workshop. The fire was caused by a gas leak.

### Fined \$125 For Drunk Driving

Robert W. Bailey, 43, Hammond, Ind., was fined \$125 and costs in Kankakee County Court today after pleading guilty to a drunken driving charge.

### CHICAGO GRAIN

CHICAGO (AP) — Trade in grain futures was very thin today but it included enough support to move the time 7 1/2 prices a cent. The first is the story of a discharged mental patient's return to his community and the second is a cartoon regarding children's jealousy. A discussion will follow the films and refreshments will be served.

### ASQC TO MEET

The Kankakee Association of Quality Control, Inc., will meet at 7 p.m. in the Kankakee County Court House today for a discussion of the quality of work.

### SAW STOLEN

O. H. Fuller, Joliet, reported to the sheriff's office that a saw was stolen from a job site. The saw was a 10-inch hand saw.

### COUPLE MARRIED

Pauline Dawson, 46, Lockport, and Pauline Dawson, 46, Lockport, were married at St. Mary's. Pauline Dawson, 46, Lockport, and Pauline Dawson, 46, Lockport, were married at St. Mary's.

### SUNDAY BREAKFAST

The Legion of the Moose will hold a breakfast meeting Sunday at 8:30 a.m. at the Moose Lodge Hall, Recommendation.

### CARD PARTY TONIGHT

The public card party sponsored annually by the Kankakee Federation of Teachers in finance will be held at 8 p.m. today in the Kankakee High School gym.

### GOOD CONDITION

Harold Gillespie, manager of the Olivet Nazarene College student center, was reported in good condition at St. Mary's Hospital after falling and breaking his ankle about 10 a.m. Thursday. Gillespie reportedly slipped and fell in a pool of water on the floor.

### DEATHS

James Hayes, 75, 138 S. Enfrances Ave., Kankakee, died at 10:20 a.m. Thursday at St. Mary's Hospital. Mother, St. Louis, 84, St. Mary's Hospital.

### NEED MONEY FAST

KANKAKEE CITIZENS CO.  
198 South Schuyler  
Since 1927

### Seeking Current Income, and the possibility of long-term growth?

**Horace Mann Fund Inc.**  
216 E. MONROE ST., SPRINGFIELD, ILL.

A diversified, managed Mutual Fund invests in common stocks, preferred stocks and bonds selected for these objectives. For free prospectus, call or drop us a line. There will be no obligation.

Send to:  
**HORACE MANN FUND, Inc.**  
216 E. Monroe St., Springfield, Ill.

NAME \_\_\_\_\_ ADDRESS \_\_\_\_\_ PHONE \_\_\_\_\_

## NEW YORK STOCKS

NEW YORK (AP) — The stock market leaned to the upside in moderately active trading early this afternoon. Averages were mixed, but the Dow Jones Industrial Average rose 1 1/2 points to 60.44.

For most key stocks, gains of fractions to a point outnumbered losses in the same range. Corporate bonds edged ahead. U.S. governments eased.

Prices as of 1 p.m.  
Dow Jones Industrial Average 60.44  
S&P 500 100.12  
Nasdaq Composite 100.12

### CHICAGO GRAIN

CHICAGO (AP) — Trade in grain futures was very thin today but it included enough support to move the time 7 1/2 prices a cent. The first is the story of a discharged mental patient's return to his community and the second is a cartoon regarding children's jealousy. A discussion will follow the films and refreshments will be served.

### ASQC TO MEET

The Kankakee Association of Quality Control, Inc., will meet at 7 p.m. in the Kankakee County Court House today for a discussion of the quality of work.

### SAW STOLEN

O. H. Fuller, Joliet, reported to the sheriff's office that a saw was stolen from a job site. The saw was a 10-inch hand saw.

### COUPLE MARRIED

Pauline Dawson, 46, Lockport, and Pauline Dawson, 46, Lockport, were married at St. Mary's. Pauline Dawson, 46, Lockport, and Pauline Dawson, 46, Lockport, were married at St. Mary's.

### SUNDAY BREAKFAST

The Legion of the Moose will hold a breakfast meeting Sunday at 8:30 a.m. at the Moose Lodge Hall, Recommendation.

### CARD PARTY TONIGHT

The public card party sponsored annually by the Kankakee Federation of Teachers in finance will be held at 8 p.m. today in the Kankakee High School gym.

### GOOD CONDITION

Harold Gillespie, manager of the Olivet Nazarene College student center, was reported in good condition at St. Mary's Hospital after falling and breaking his ankle about 10 a.m. Thursday. Gillespie reportedly slipped and fell in a pool of water on the floor.

### DEATHS

James Hayes, 75, 138 S. Enfrances Ave., Kankakee, died at 10:20 a.m. Thursday at St. Mary's Hospital. Mother, St. Louis, 84, St. Mary's Hospital.

### NEED MONEY FAST

KANKAKEE CITIZENS CO.  
198 South Schuyler  
Since 1927

### Seeking Current Income, and the possibility of long-term growth?

**Horace Mann Fund Inc.**  
216 E. MONROE ST., SPRINGFIELD, ILL.

A diversified, managed Mutual Fund invests in common stocks, preferred stocks and bonds selected for these objectives. For free prospectus, call or drop us a line. There will be no obligation.

Send to:  
**HORACE MANN FUND, Inc.**  
216 E. Monroe St., Springfield, Ill.

NAME \_\_\_\_\_ ADDRESS \_\_\_\_\_ PHONE \_\_\_\_\_

## Indiana Boy Injured In Mishap Dies

SHELDON (JNS) — An inquest into the death of a 5-year-old Indiana boy, who died after being struck by a car, was held Thursday in Sheldon.

The inquest was held at the Sheldon Courthouse. The boy, who was named Robert W. Bailey, was struck by a car while crossing a street.

The car was driven by a woman named Mrs. L. H. Bailey. The car was traveling on a residential street.

The inquest was held at the Sheldon Courthouse. The boy, who was named Robert W. Bailey, was struck by a car while crossing a street.

The car was driven by a woman named Mrs. L. H. Bailey. The car was traveling on a residential street.

The inquest was held at the Sheldon Courthouse. The boy, who was named Robert W. Bailey, was struck by a car while crossing a street.

The car was driven by a woman named Mrs. L. H. Bailey. The car was traveling on a residential street.

The inquest was held at the Sheldon Courthouse. The boy, who was named Robert W. Bailey, was struck by a car while crossing a street.

The car was driven by a woman named Mrs. L. H. Bailey. The car was traveling on a residential street.

The inquest was held at the Sheldon Courthouse. The boy, who was named Robert W. Bailey, was struck by a car while crossing a street.

The car was driven by a woman named Mrs. L. H. Bailey. The car was traveling on a residential street.

The inquest was held at the Sheldon Courthouse. The boy, who was named Robert W. Bailey, was struck by a car while crossing a street.

The car was driven by a woman named Mrs. L. H. Bailey. The car was traveling on a residential street.

The inquest was held at the Sheldon Courthouse. The boy, who was named Robert W. Bailey, was struck by a car while crossing a street.

The car was driven by a woman named Mrs. L. H. Bailey. The car was traveling on a residential street.

The inquest was held at the Sheldon Courthouse. The boy, who was named Robert W. Bailey, was struck by a car while crossing a street.

## LEGAL NOTICES

ADVERTISEMENT FOR BIDS  
NOTICE IS HEREBY GIVEN that the Board of Directors of the Kankakee County Board of Supervisors has decided to sell the following described land:

TRACT I: Commencing at the intersection of the West line of West Avenue with the North line of Johnson Avenue, thence South along the West line of Johnson Avenue to the North line of Johnson Avenue, thence East along the North line of Johnson Avenue to the East line of Johnson Avenue, thence South along the East line of Johnson Avenue to the South line of Johnson Avenue, thence West along the South line of Johnson Avenue to the West line of Johnson Avenue, thence North along the West line of Johnson Avenue to the point of beginning.

TRACT II: Commencing at the intersection of the South line of Johnson Avenue with the North line of Johnson Avenue, thence South along the South line of Johnson Avenue to the South line of Johnson Avenue, thence West along the South line of Johnson Avenue to the West line of Johnson Avenue, thence North along the West line of Johnson Avenue to the point of beginning.

TRACT III: Commencing at the intersection of the North line of Johnson Avenue with the South line of Johnson Avenue, thence North along the North line of Johnson Avenue to the North line of Johnson Avenue, thence West along the North line of Johnson Avenue to the West line of Johnson Avenue, thence South along the West line of Johnson Avenue to the South line of Johnson Avenue, thence East along the South line of Johnson Avenue to the point of beginning.

TRACT IV: Commencing at the intersection of the East line of Johnson Avenue with the West line of Johnson Avenue, thence East along the East line of Johnson Avenue to the East line of Johnson Avenue, thence South along the East line of Johnson Avenue to the South line of Johnson Avenue, thence West along the South line of Johnson Avenue to the West line of Johnson Avenue, thence North along the West line of Johnson Avenue to the point of beginning.

TRACT V: Commencing at the intersection of the West line of Johnson Avenue with the East line of Johnson Avenue, thence West along the West line of Johnson Avenue to the West line of Johnson Avenue, thence South along the West line of Johnson Avenue to the South line of Johnson Avenue, thence East along the South line of Johnson Avenue to the East line of Johnson Avenue, thence North along the East line of Johnson Avenue to the point of beginning.

TRACT VI: Commencing at the intersection of the North line of Johnson Avenue with the South line of Johnson Avenue, thence North along the North line of Johnson Avenue to the North line of Johnson Avenue, thence West along the North line of Johnson Avenue to the West line of Johnson Avenue, thence South along the West line of Johnson Avenue to the South line of Johnson Avenue, thence East along the South line of Johnson Avenue to the point of beginning.

TRACT VII: Commencing at the intersection of the South line of Johnson Avenue with the North line of Johnson Avenue, thence South along the South line of Johnson Avenue to the South line of Johnson Avenue, thence West along the South line of Johnson Avenue to the West line of Johnson Avenue, thence North along the West line of Johnson Avenue to the North line of Johnson Avenue, thence East along the North line of Johnson Avenue to the point of beginning.

TRACT VIII: Commencing at the intersection of the East line of Johnson Avenue with the West line of Johnson Avenue, thence East along the East line of Johnson Avenue to the East line of Johnson Avenue, thence South along the East line of Johnson Avenue to the South line of Johnson Avenue, thence West along the South line of Johnson Avenue to the West line of Johnson Avenue, thence North along the West line of Johnson Avenue to the point of beginning.

TRACT IX: Commencing at the intersection of the West line of Johnson Avenue with the East line of Johnson Avenue, thence West along the West line of Johnson Avenue to the West line of Johnson Avenue, thence South along the West line of Johnson Avenue to the South line of Johnson Avenue, thence East along the South line of Johnson Avenue to the East line of Johnson Avenue, thence North along the East line of Johnson Avenue to the point of beginning.

TRACT X: Commencing at the intersection of the North line of Johnson Avenue with the South line of Johnson Avenue, thence North along the North line of Johnson Avenue to the North line of Johnson Avenue, thence West along the North line of Johnson Avenue to the West line of Johnson Avenue, thence South along the West line of Johnson Avenue to the South line of Johnson Avenue, thence East along the South line of Johnson Avenue to the point of beginning.

TRACT XI: Commencing at the intersection of the South line of Johnson Avenue with the North line of Johnson Avenue, thence South along the South line of Johnson Avenue to the South line of Johnson Avenue, thence West along the South line of Johnson Avenue to the West line of Johnson Avenue, thence North along the West line of Johnson Avenue to the North line of Johnson Avenue, thence East along the North line of Johnson Avenue to the point of beginning.

TRACT XII: Commencing at the intersection of the East line of Johnson Avenue with the West line of Johnson Avenue, thence East along the East line of Johnson Avenue to the East line of Johnson Avenue, thence South along the East line of Johnson Avenue to the South line of Johnson Avenue, thence West along the South line of Johnson Avenue to the West line of Johnson Avenue, thence North along the West line of Johnson Avenue to the point of beginning.

TRACT XIII: Commencing at the intersection of the West line of Johnson Avenue with the East line of Johnson Avenue, thence West along the West line of Johnson Avenue to the West line of Johnson Avenue, thence South along the West line of Johnson Avenue to the South line of Johnson Avenue, thence East along the South line of Johnson Avenue to the East line of Johnson Avenue, thence North along the East line of Johnson Avenue to the point of beginning.

TRACT XIV: Commencing at the intersection of the North line of Johnson Avenue with the South line of Johnson Avenue, thence North along the North line of Johnson Avenue to the North line of Johnson Avenue, thence West along the North line of Johnson Avenue to the West line of Johnson Avenue, thence South along the West line of Johnson Avenue to the South line of Johnson Avenue, thence East along the South line of Johnson Avenue to the point of beginning.

TRACT XV: Commencing at the intersection of the South line of Johnson Avenue with the North line of Johnson Avenue, thence South along the South line of Johnson Avenue to the South line of Johnson Avenue, thence West along the South line of Johnson Avenue to the West line of Johnson Avenue, thence North along the West line of Johnson Avenue to the North line of Johnson Avenue, thence East along the North line of Johnson Avenue to the point of beginning.

## Lawn And Garden Care

By JOSEPH LARSON  
Everyone agrees that lawns need food to grow and if it isn't present naturally in the soil the food should be added in the form of fertilizer.

But all agreement ends there. As for the amount of fertilizer, types of fertilizer and number of yearly applications there are as many programs as there are manufacturers.

There is also much confusion as to what the fertilizer contains and what the three numbers on the bag mean.

FIRST of all there are three basic ingredients in most fertilizers: nitrogen, phosphorus and potassium. They are nitrogen, phosphorus and potassium.

These Easter lily and hydrangea gift plants can be saved and reflowered if the owner doesn't mind a little work and has a little luck.

The lily is the easiest to reflower and, if handled correctly, will bloom in the garden in August. After the Easter plant has been kept in a sunny window and the bulb out of the pot and plant outside in a sunny well drained bed at a depth of about six inches.

Withhold water and dry the flower bed receiving planting completely. In May, knock the bulb out of the pot and plant outside in a sunny well drained bed at a depth of about six inches.

Withhold water and dry the flower bed receiving planting completely. In May, knock the bulb out of the pot and plant outside in a sunny well drained bed at a depth of about six inches.

Withhold water and dry the flower bed receiving planting completely. In May, knock the bulb out of the pot and plant outside in a sunny well drained bed at a depth of about six inches.

Withhold water and dry the flower bed receiving planting completely. In May, knock the bulb out of the pot and plant outside in a sunny well drained bed at a depth of about six inches.

Withhold water and dry the flower bed receiving planting completely. In May, knock the bulb out of the pot and plant outside in a sunny well drained bed at a depth of about six inches.

Withhold water and dry the flower bed receiving planting completely. In May, knock the bulb out of the pot and plant outside in a sunny well drained bed at a depth of about six inches.

Withhold water and dry the flower bed receiving planting completely. In May, knock the bulb out of the pot and plant outside in a sunny well drained bed at a depth of about six inches.

Withhold water and dry the flower bed receiving planting completely. In May, knock the bulb out of the pot and plant outside in a sunny well drained bed at a depth of about six inches.

Withhold water and dry the flower bed receiving planting completely. In May, knock the bulb out of the pot and plant outside in a sunny well drained bed at a depth of about six inches.

Withhold water and dry the flower bed receiving planting completely. In May, knock the bulb out of the pot and plant outside in a sunny well drained bed at a depth of about six inches.

## Confused On Fertilizers? Well, You're Not Alone

By JOSEPH LARSON  
Everyone agrees that lawns need food to grow and if it isn't present naturally in the soil the food should be added in the form of fertilizer.

But all agreement ends there. As for the amount of fertilizer, types of fertilizer and number of yearly applications there are as many programs as there are manufacturers.

There is also much confusion as to what the fertilizer contains and what the three numbers on the bag mean.

FIRST of all there are three basic ingredients in most fertilizers: nitrogen, phosphorus and potassium. They are nitrogen, phosphorus and potassium.

These Easter lily and hydrangea gift plants can be saved and reflowered if the owner doesn't mind a little work and has a little luck.

The lily is the easiest to reflower and, if handled correctly, will bloom in the garden in August. After the Easter plant has been kept in a sunny window and the bulb out of the pot and plant outside in a sunny well drained bed at a depth of about six inches.

Withhold water and dry the flower bed receiving planting completely. In May, knock the bulb out of the pot and plant outside in a sunny well drained bed at a depth of about six inches.

Withhold water and dry the flower bed receiving planting completely. In May, knock the bulb out of the pot and plant outside in a sunny well drained bed at a depth of about six inches.

Withhold water and dry the flower bed receiving planting completely. In May, knock the bulb out of the pot and plant outside in a sunny well drained bed at a depth of about six inches.

Withhold water and dry the flower bed receiving planting completely. In May, knock the bulb out of the pot and plant outside in a sunny well drained bed at a depth of about six inches.

Withhold water and dry the flower bed receiving planting completely. In May, knock the bulb out of the pot and plant outside in a sunny well drained bed at a depth of about six inches.

Withhold water and dry the flower bed receiving planting completely. In May, knock the bulb out of the pot and plant outside in a sunny well drained bed at a depth of about six inches.

Withhold water and dry the flower bed receiving planting completely. In May, knock the bulb out of the pot and plant outside in a sunny well drained bed at a depth of about six inches.

Withhold water and dry the flower bed receiving planting completely. In May, knock the bulb out of the pot and plant outside in a sunny well drained bed at a depth of about six inches.

Withhold water and dry the flower bed receiving planting completely. In May, knock the bulb out of the pot and plant outside in a sunny well drained bed at a depth of about six inches.

Withhold water and dry the flower bed receiving planting completely. In May, knock the bulb out of the pot and plant outside in a sunny well drained bed at a depth of about six inches.

## Try Reflowering Those Easter Gift Plants

By JOSEPH LARSON  
Everyone agrees that lawns need food to grow and if it isn't present naturally in the soil the food should be added in the form of fertilizer.

But all agreement ends there. As for the amount of fertilizer, types of fertilizer and number of yearly applications there are as many programs as there are manufacturers.

There is also much confusion as to what the fertilizer contains and what the three numbers on the bag mean.

FIRST of all there are three basic ingredients in most fertilizers: nitrogen, phosphorus and potassium. They are nitrogen, phosphorus and potassium.

These Easter lily and hydrangea gift plants can be saved and reflowered if the owner doesn't mind a little work and has a little luck.

The lily is the easiest to reflower and, if handled correctly, will bloom in the garden in August. After the Easter plant has been kept in a sunny window and the bulb out of the pot and plant outside in a sunny well drained bed at a depth of about six inches.

Withhold water and dry the flower bed receiving planting completely. In May, knock the bulb out of the pot and plant outside in a sunny well drained bed at a depth of about six inches.

Withhold water and dry the flower bed receiving planting completely. In May, knock the bulb out of the pot and plant outside in a sunny well drained bed at a depth of about six inches.

Withhold water and dry the flower bed receiving planting completely. In May, knock the bulb out of the pot and plant outside in a sunny well drained bed at a depth of about six inches.

Withhold water and dry the flower bed receiving planting completely. In May, knock the bulb out of the pot and plant outside in a sunny well drained bed at a depth of about six inches.

Withhold water and dry the flower bed receiving planting completely. In May, knock the bulb out of the pot and plant outside in a sunny well drained bed at a depth of about six inches.

Withhold water and dry the flower bed receiving planting completely. In May, knock the bulb out of the pot and plant outside in a sunny well drained bed at a depth of about six inches.

Withhold water and dry the flower bed receiving planting completely. In May, knock the bulb out of the pot and plant outside in a sunny well drained bed at a depth of about six inches.

Withhold water and dry the flower bed receiving planting completely. In May, knock the bulb out of the pot and plant outside in a sunny well drained bed at a depth of about six inches.

Withhold water and dry the flower bed receiving planting completely. In May, knock the bulb out of the pot and plant outside in a sunny well drained bed at a depth of about six inches.

Withhold water and dry the flower bed receiving planting completely. In May, knock the bulb out of the pot and plant outside in a sunny well drained bed at a depth of about six inches.

## Home Owners Check Those Junipers

Home owners who plan to use junipers in landscaping are advised to purchase varieties resistant to cedar apple and cedar hawkmoth rust. The advice comes from two plant pathologists of the Illinois Natural History Survey, Dr. E. B. Hirst and Dr. Dan Neely.

Among some of the best resistant varieties of juniper, they suggest, are Chinese, Plater, Prostrata, Andorra, Spiny Greek and Savin. This is only a partial list, however, and people who plan to buy junipers are advised to check with a reliable nursery before purchasing.

Red cedar, Canat, Colorado and Rocky Mountain varieties of juniper are most susceptible to the rusts.

BOTH CEDAR apple and cedar hawkmoth rust appear on junipers as green to brown, woolly growths on the twigs and leaves. The galls will be especially numerous in March and April. They are most conspicuous, following warm spring rains, as orange to red, gelatinous masses resembling a gall of wax.

The two sources of the big three foods are organic and inorganic fertilizers. Organic fertilizers are manures, composted vegetable material and sewage sludge. Rotated manure is probably the best organic fertilizer and if well rotted it is odorless and not unpleasant.

Nitrogen stimulates green growth, the phosphorus, in the form of phosphoric acid, stimulates root growth and good seed.







# Youth At School

## Gilman To Host Iroquois Co. Career Night Monday

Gilman High School will be host to the 1960 Iroquois County Career Night to be held Monday evening. It is for juniors and seniors of Iroquois County and their parents.

The program will begin with a general session at which James M. Slater, University of Illinois guidance counselor, will be guest speaker. He will speak on the subject, "Modern Practices in Arriving at Vocational Decisions."

Following the general session students and parents will attend two sections to hear discussions of vocations by persons in them. First section will run from 8:10 to 8:30 p.m. and the second from 8:35 to 9:15 p.m.

Vocations to be represented include the following: home economics, nursing, medical, engineering and architecture, civil service and government occupations, agriculture, automotive, radio-TV, accounting-bookkeeping, beauty operator, construction and building trades, factory work, social work, law enforcement and salesman and merchandising.

The career night is sponsored by the Iroquois County High School Principals' Association with assistance from the Iroquois County Farm Bureau. Committee chairman is Arthur Carlson, Stockland High School principal.

Ellen Lynch has been elected president of the Mission Club of St. Patrick Central High School for the 1960-61 school year. Other officers are Vicki Brown vice president, Denise Johnston secretary and Barry Lamb, treasurer.

Joanne Elizabeth Oram, senior at Watseka High School, has been elected Watseka girl good citizen by the faculty of the school. She is a daughter of Judge and

Concert By Dana Choir At WIHS

The concert to be presented by Dana Lutheran College, Blair, Neb., next Tuesday at 8 p.m. will be presented in the West Junior High School auditorium, rather than Kankakee High School auditorium as reported previously.

The concert here is being sponsored by Trinity Lutheran Church and co-sponsored by Zion Lutheran Church of Clifton.

Members of the two congregations will house the choir members in their homes Tuesday evening. Trinity Church will sponsor a supper for the choir members at the church Tuesday.

The 48-voice choir is directed by Paul E. Neve. This is the choir's 25th annual tour including two European tours. A European tour is also scheduled for 1961.

Tickets are available from members of the two sponsoring congregations and also may be secured at the door.

All states except two—Mississippi and South Carolina—require that children attend school through the age of 16.

**HOME'S Little Plumber**

**CHECK THIS LIST** to be sure your plumbing and heating equipment is adequate

- Do you get enough hot water from your heater?
- Do your bathroom fixtures look old fashioned?
- Do plumbing drains get clogged frequently?
- Does the water ever appear rusty?
- Is your furnace or burner wasting fuel?
- Can you use an additional bathroom?
- Does your washing machine work properly?

**COME IN FOR FREE ESTIMATE!**  
\$3.25 MONTH PLUS INSTALLATION  
NO MONEY DOWN  
3 YEARS TO PAY

**HOME'S APPLIANCE & HEATING**  
PHONE THE "LITTLE PLUMBER"  
NUMBER WE 3-0211  
1222 W. NATIONAL ST.  
KANKAKEE, ILLINOIS  
Plumbing, Air Conditioning, Heating

Kankakee Daily Journal  
Friday, April 22, 1960

## James Hayes, 75, Dies; Funeral Services Monday

James Hayes, 75, 138 S. Enterprise Ave., died today in St. Mary's Hospital after an illness of several weeks.

Friends may call at the Hickey Funeral Home from 2 p.m. Saturday until time of services. The daughters of Isabella will meet at the funeral home at 4 p.m. Sunday to recite the rosary.

Services will be at 10 a.m. Monday in St. Rose Church. Burial will be in Mt. Calvary Cemetery. Mr. Hayes was born March 5, 1885, in Mills Grove Township and is a member of the Clifton community for many years. He moved to Kankakee 37 years ago and, for 16 years, was employed as maintenance man at St. Viator's College. He had been retired for 15 years.

Mr. Hayes was married in Clifton Aug. 4, 1915, to the former Margaret O'Reilly. Also surviving are several nieces and nephews.

Mr. Hayes was preceded in death by his parents; brothers, William, Thomas, John and Patrick; and sisters, Mrs. Elizabeth Riordan, Mrs. Hannah McGinnis and Mrs. Alice Dunn.

He was a member of Carpenters local union 498.

**Funeral Monday In Dwight For Mrs. Gillispie**

The following night GAA members had an evening of swimming at the Streator YMCA pool.

Members of the GAA of Dwight High School played hosts to eighth grade girls for the annual "get-acquainted" night held to better acquaint future freshmen girls with the organization.

Following a period of relay and games, initiation of the freshmen members was held in the high school cafeteria. Lunch was served.

The following night GAA members had an evening of swimming at the Streator YMCA pool.

Members of the two congregations will house the choir members in their homes Tuesday evening. Trinity Church will sponsor a supper for the choir members at the church Tuesday.

The 48-voice choir is directed by Paul E. Neve. This is the choir's 25th annual tour including two European tours. A European tour is also scheduled for 1961.

Tickets are available from members of the two sponsoring congregations and also may be secured at the door.

**HOME'S Little Plumber**

**CHECK THIS LIST** to be sure your plumbing and heating equipment is adequate

- Do you get enough hot water from your heater?
- Do your bathroom fixtures look old fashioned?
- Do plumbing drains get clogged frequently?
- Does the water ever appear rusty?
- Is your furnace or burner wasting fuel?
- Can you use an additional bathroom?
- Does your washing machine work properly?

**COME IN FOR FREE ESTIMATE!**  
\$3.25 MONTH PLUS INSTALLATION  
NO MONEY DOWN  
3 YEARS TO PAY

**HOME'S APPLIANCE & HEATING**  
PHONE THE "LITTLE PLUMBER"  
NUMBER WE 3-0211  
1222 W. NATIONAL ST.  
KANKAKEE, ILLINOIS  
Plumbing, Air Conditioning, Heating

Kankakee Daily Journal  
Friday, April 22, 1960

## James Hayes, 75, Dies; Funeral Services Monday

James Hayes, 75, 138 S. Enterprise Ave., died today in St. Mary's Hospital after an illness of several weeks.

Friends may call at the Hickey Funeral Home from 2 p.m. Saturday until time of services. The daughters of Isabella will meet at the funeral home at 4 p.m. Sunday to recite the rosary.

Services will be at 10 a.m. Monday in St. Rose Church. Burial will be in Mt. Calvary Cemetery. Mr. Hayes was born March 5, 1885, in Mills Grove Township and is a member of the Clifton community for many years. He moved to Kankakee 37 years ago and, for 16 years, was employed as maintenance man at St. Viator's College. He had been retired for 15 years.

Mr. Hayes was married in Clifton Aug. 4, 1915, to the former Margaret O'Reilly. Also surviving are several nieces and nephews.

Mr. Hayes was preceded in death by his parents; brothers, William, Thomas, John and Patrick; and sisters, Mrs. Elizabeth Riordan, Mrs. Hannah McGinnis and Mrs. Alice Dunn.

He was a member of Carpenters local union 498.

**Funeral Monday In Dwight For Mrs. Gillispie**

The following night GAA members had an evening of swimming at the Streator YMCA pool.

Members of the GAA of Dwight High School played hosts to eighth grade girls for the annual "get-acquainted" night held to better acquaint future freshmen girls with the organization.

Following a period of relay and games, initiation of the freshmen members was held in the high school cafeteria. Lunch was served.

The following night GAA members had an evening of swimming at the Streator YMCA pool.

Members of the two congregations will house the choir members in their homes Tuesday evening. Trinity Church will sponsor a supper for the choir members at the church Tuesday.

The 48-voice choir is directed by Paul E. Neve. This is the choir's 25th annual tour including two European tours. A European tour is also scheduled for 1961.

Tickets are available from members of the two sponsoring congregations and also may be secured at the door.

**HOME'S Little Plumber**

**CHECK THIS LIST** to be sure your plumbing and heating equipment is adequate

- Do you get enough hot water from your heater?
- Do your bathroom fixtures look old fashioned?
- Do plumbing drains get clogged frequently?
- Does the water ever appear rusty?
- Is your furnace or burner wasting fuel?
- Can you use an additional bathroom?
- Does your washing machine work properly?

**COME IN FOR FREE ESTIMATE!**  
\$3.25 MONTH PLUS INSTALLATION  
NO MONEY DOWN  
3 YEARS TO PAY

**HOME'S APPLIANCE & HEATING**  
PHONE THE "LITTLE PLUMBER"  
NUMBER WE 3-0211  
1222 W. NATIONAL ST.  
KANKAKEE, ILLINOIS  
Plumbing, Air Conditioning, Heating

Kankakee Daily Journal  
Friday, April 22, 1960

## James Hayes, 75, Dies; Funeral Services Monday

James Hayes, 75, 138 S. Enterprise Ave., died today in St. Mary's Hospital after an illness of several weeks.

Friends may call at the Hickey Funeral Home from 2 p.m. Saturday until time of services. The daughters of Isabella will meet at the funeral home at 4 p.m. Sunday to recite the rosary.

Services will be at 10 a.m. Monday in St. Rose Church. Burial will be in Mt. Calvary Cemetery. Mr. Hayes was born March 5, 1885, in Mills Grove Township and is a member of the Clifton community for many years. He moved to Kankakee 37 years ago and, for 16 years, was employed as maintenance man at St. Viator's College. He had been retired for 15 years.

Mr. Hayes was married in Clifton Aug. 4, 1915, to the former Margaret O'Reilly. Also surviving are several nieces and nephews.

Mr. Hayes was preceded in death by his parents; brothers, William, Thomas, John and Patrick; and sisters, Mrs. Elizabeth Riordan, Mrs. Hannah McGinnis and Mrs. Alice Dunn.

He was a member of Carpenters local union 498.

**Funeral Monday In Dwight For Mrs. Gillispie**

The following night GAA members had an evening of swimming at the Streator YMCA pool.

Members of the GAA of Dwight High School played hosts to eighth grade girls for the annual "get-acquainted" night held to better acquaint future freshmen girls with the organization.

Following a period of relay and games, initiation of the freshmen members was held in the high school cafeteria. Lunch was served.

The following night GAA members had an evening of swimming at the Streator YMCA pool.

Members of the two congregations will house the choir members in their homes Tuesday evening. Trinity Church will sponsor a supper for the choir members at the church Tuesday.

The 48-voice choir is directed by Paul E. Neve. This is the choir's 25th annual tour including two European tours. A European tour is also scheduled for 1961.

Tickets are available from members of the two sponsoring congregations and also may be secured at the door.

**HOME'S Little Plumber**

**CHECK THIS LIST** to be sure your plumbing and heating equipment is adequate

- Do you get enough hot water from your heater?
- Do your bathroom fixtures look old fashioned?
- Do plumbing drains get clogged frequently?
- Does the water ever appear rusty?
- Is your furnace or burner wasting fuel?
- Can you use an additional bathroom?
- Does your washing machine work properly?

**COME IN FOR FREE ESTIMATE!**  
\$3.25 MONTH PLUS INSTALLATION  
NO MONEY DOWN  
3 YEARS TO PAY

**HOME'S APPLIANCE & HEATING**  
PHONE THE "LITTLE PLUMBER"  
NUMBER WE 3-0211  
1222 W. NATIONAL ST.  
KANKAKEE, ILLINOIS  
Plumbing, Air Conditioning, Heating

Kankakee Daily Journal  
Friday, April 22, 1960

## James Hayes, 75, Dies; Funeral Services Monday

James Hayes, 75, 138 S. Enterprise Ave., died today in St. Mary's Hospital after an illness of several weeks.

Friends may call at the Hickey Funeral Home from 2 p.m. Saturday until time of services. The daughters of Isabella will meet at the funeral home at 4 p.m. Sunday to recite the rosary.

Services will be at 10 a.m. Monday in St. Rose Church. Burial will be in Mt. Calvary Cemetery. Mr. Hayes was born March 5, 1885, in Mills Grove Township and is a member of the Clifton community for many years. He moved to Kankakee 37 years ago and, for 16 years, was employed as maintenance man at St. Viator's College. He had been retired for 15 years.

Mr. Hayes was married in Clifton Aug. 4, 1915, to the former Margaret O'Reilly. Also surviving are several nieces and nephews.

Mr. Hayes was preceded in death by his parents; brothers, William, Thomas, John and Patrick; and sisters, Mrs. Elizabeth Riordan, Mrs. Hannah McGinnis and Mrs. Alice Dunn.

He was a member of Carpenters local union 498.

**Funeral Monday In Dwight For Mrs. Gillispie**

The following night GAA members had an evening of swimming at the Streator YMCA pool.

Members of the GAA of Dwight High School played hosts to eighth grade girls for the annual "get-acquainted" night held to better acquaint future freshmen girls with the organization.

Following a period of relay and games, initiation of the freshmen members was held in the high school cafeteria. Lunch was served.

The following night GAA members had an evening of swimming at the Streator YMCA pool.

Members of the two congregations will house the choir members in their homes Tuesday evening. Trinity Church will sponsor a supper for the choir members at the church Tuesday.

The 48-voice choir is directed by Paul E. Neve. This is the choir's 25th annual tour including two European tours. A European tour is also scheduled for 1961.

Tickets are available from members of the two sponsoring congregations and also may be secured at the door.

**HOME'S Little Plumber**

**CHECK THIS LIST** to be sure your plumbing and heating equipment is adequate

- Do you get enough hot water from your heater?
- Do your bathroom fixtures look old fashioned?
- Do plumbing drains get clogged frequently?
- Does the water ever appear rusty?
- Is your furnace or burner wasting fuel?
- Can you use an additional bathroom?
- Does your washing machine work properly?

**COME IN FOR FREE ESTIMATE!**  
\$3.25 MONTH PLUS INSTALLATION  
NO MONEY DOWN  
3 YEARS TO PAY

**HOME'S APPLIANCE & HEATING**  
PHONE THE "LITTLE PLUMBER"  
NUMBER WE 3-0211  
1222 W. NATIONAL ST.  
KANKAKEE, ILLINOIS  
Plumbing, Air Conditioning, Heating

Kankakee Daily Journal  
Friday, April 22, 1960

## James Hayes, 75, Dies; Funeral Services Monday

James Hayes, 75, 138 S. Enterprise Ave., died today in St. Mary's Hospital after an illness of several weeks.

Friends may call at the Hickey Funeral Home from 2 p.m. Saturday until time of services. The daughters of Isabella will meet at the funeral home at 4 p.m. Sunday to recite the rosary.

Services will be at 10 a.m. Monday in St. Rose Church. Burial will be in Mt. Calvary Cemetery. Mr. Hayes was born March 5, 1885, in Mills Grove Township and is a member of the Clifton community for many years. He moved to Kankakee 37 years ago and, for 16 years, was employed as maintenance man at St. Viator's College. He had been retired for 15 years.

Mr. Hayes was married in Clifton Aug. 4, 1915, to the former Margaret O'Reilly. Also surviving are several nieces and nephews.

Mr. Hayes was preceded in death by his parents; brothers, William, Thomas, John and Patrick; and sisters, Mrs. Elizabeth Riordan, Mrs. Hannah McGinnis and Mrs. Alice Dunn.

He was a member of Carpenters local union 498.

**Funeral Monday In Dwight For Mrs. Gillispie**

The following night GAA members had an evening of swimming at the Streator YMCA pool.

Members of the GAA of Dwight High School played hosts to eighth grade girls for the annual "get-acquainted" night held to better acquaint future freshmen girls with the organization.

Following a period of relay and games, initiation of the freshmen members was held in the high school cafeteria. Lunch was served.

The following night GAA members had an evening of swimming at the Streator YMCA pool.

Members of the two congregations will house the choir members in their homes Tuesday evening. Trinity Church will sponsor a supper for the choir members at the church Tuesday.

The 48-voice choir is directed by Paul E. Neve. This is the choir's 25th annual tour including two European tours. A European tour is also scheduled for 1961.

Tickets are available from members of the two sponsoring congregations and also may be secured at the door.

**HOME'S Little Plumber**

**CHECK THIS LIST** to be sure your plumbing and heating equipment is adequate

- Do you get enough hot water from your heater?
- Do your bathroom fixtures look old fashioned?
- Do plumbing drains get clogged frequently?
- Does the water ever appear rusty?
- Is your furnace or burner wasting fuel?
- Can you use an additional bathroom?
- Does your washing machine work properly?

**COME IN FOR FREE ESTIMATE!**  
\$3.25 MONTH PLUS INSTALLATION  
NO MONEY DOWN  
3 YEARS TO PAY

**HOME'S APPLIANCE & HEATING**  
PHONE THE "LITTLE PLUMBER"  
NUMBER WE 3-0211  
1222 W. NATIONAL ST.  
KANKAKEE, ILLINOIS  
Plumbing, Air Conditioning, Heating

Kankakee Daily Journal  
Friday, April 22, 1960

## James Hayes, 75, Dies; Funeral Services Monday

James Hayes, 75, 138 S. Enterprise Ave., died today in St. Mary's Hospital after an illness of several weeks.

Friends may call at the Hickey Funeral Home from 2 p.m. Saturday until time of services. The daughters of Isabella will meet at the funeral home at 4 p.m. Sunday to recite the rosary.

Services will be at 10 a.m. Monday in St. Rose Church. Burial will be in Mt. Calvary Cemetery. Mr. Hayes was born March 5, 1885, in Mills Grove Township and is a member of the Clifton community for many years. He moved to Kankakee 37 years ago and, for 16 years, was employed as maintenance man at St. Viator's College. He had been retired for 15 years.

Mr. Hayes was married in Clifton Aug. 4, 1915, to the former Margaret O'Reilly. Also surviving are several nieces and nephews.

Mr. Hayes was preceded in death by his parents; brothers, William, Thomas, John and Patrick; and sisters, Mrs. Elizabeth Riordan, Mrs. Hannah McGinnis and Mrs. Alice Dunn.

He was a member of Carpenters local union 498.

**Funeral Monday In Dwight For Mrs. Gillispie**

The following night GAA members had an evening of swimming at the Streator YMCA pool.

Members of the GAA of Dwight High School played hosts to eighth grade girls for the annual "get-acquainted" night held to better acquaint future freshmen girls with the organization.

Following a period of relay and games, initiation of the freshmen members was held in the high school cafeteria. Lunch was served.

The following night GAA members had an evening of swimming at the Streator YMCA pool.

Members of the two congregations will house the choir members in their homes Tuesday evening. Trinity Church will sponsor a supper for the choir members at the church Tuesday.

The 48-voice choir is directed by Paul E. Neve. This is the choir's 25th annual tour including two European tours. A European tour is also scheduled for 1961.

Tickets are available from members of the two sponsoring congregations and also may be secured at the door.

**HOME'S Little Plumber**

**CHECK THIS LIST** to be sure your plumbing and heating equipment is adequate

- Do you get enough hot water from your heater?
- Do your bathroom fixtures look old fashioned?
- Do plumbing drains get clogged frequently?
- Does the water ever appear rusty?
- Is your furnace or burner wasting fuel?
- Can you use an additional bathroom?
- Does your washing machine work properly?

**COME IN FOR FREE ESTIMATE!**  
\$3.25 MONTH PLUS INSTALLATION  
NO MONEY DOWN  
3 YEARS TO PAY

**HOME'S APPLIANCE & HEATING**  
PHONE THE "LITTLE PLUMBER"  
NUMBER WE 3-0211  
1222 W. NATIONAL ST.  
KANKAKEE, ILLINOIS  
Plumbing, Air Conditioning, Heating

Kankakee Daily Journal  
Friday, April 22, 1960

## James Hayes, 75, Dies; Funeral Services Monday

James Hayes, 75, 138 S. Enterprise Ave., died today in St. Mary's Hospital after an illness of several weeks.

Friends may call at the Hickey Funeral Home from 2 p.m. Saturday until time of services. The daughters of Isabella will meet at the funeral home at 4 p.m. Sunday to recite the rosary.

Services will be at 10 a.m. Monday in St. Rose Church. Burial will be in Mt. Calvary Cemetery. Mr. Hayes was born March 5, 1885, in Mills Grove Township and is a member of the Clifton community for many years. He moved to Kankakee 37 years ago and, for 16 years, was employed as maintenance man at St. Viator's College. He had been retired for 15 years.

Mr. Hayes was married in Clifton Aug. 4, 1915, to the former Margaret O'Reilly. Also surviving are several nieces and nephews.

Mr. Hayes was preceded in death by his parents; brothers, William, Thomas, John and Patrick; and sisters, Mrs. Elizabeth Riordan, Mrs. Hannah McGinnis and Mrs. Alice Dunn.

He was a member of Carpenters local union 498.

**Funeral Monday In Dwight For Mrs. Gillispie**

The following night GAA members had an evening of swimming at the Streator YMCA pool.

Members of the GAA of Dwight High School played hosts to eighth grade girls for the annual "get-acquainted" night held to better acquaint future freshmen girls with the organization.

Following a period of relay and games, initiation of the freshmen members was held in the high school cafeteria. Lunch was served.

The following night GAA members had an evening of swimming at the Streator YMCA pool.

Members of the two congregations will house the choir members in their homes Tuesday evening. Trinity Church will sponsor a supper for the choir members at the church Tuesday.

The 48-voice choir is directed by Paul E. Neve. This is the choir's 25th annual tour including two European tours. A European tour is also scheduled for 1961.

Tickets are available from members of the two sponsoring congregations and also may be secured at the door.

**HOME'S Little Plumber**

**CHECK THIS LIST** to be sure your plumbing and heating equipment is adequate

- Do you get enough hot water from your heater?
- Do your bathroom fixtures look old fashioned?
- Do plumbing drains get clogged frequently?
- Does the water ever appear rusty?
- Is your furnace or burner wasting fuel?
- Can you use an additional bathroom?
- Does your washing machine work properly?

**COME IN FOR FREE ESTIMATE!**  
\$3.25 MONTH PLUS INSTALLATION  
NO MONEY DOWN  
3 YEARS TO PAY

**HOME'S APPLIANCE & HEATING**  
PHONE THE "LITTLE PLUMBER"  
NUMBER WE 3-0211  
1222 W. NATIONAL ST.  
KANKAKEE, ILLINOIS  
Plumbing, Air Conditioning, Heating

Kankakee Daily Journal  
Friday, April 22, 1960

## James Hayes, 75, Dies; Funeral Services Monday

James Hayes, 75, 138 S. Enterprise Ave., died today in St. Mary's Hospital after an illness of several weeks.

Friends may call at the Hickey Funeral Home from 2 p.m. Saturday until time of services. The daughters of Isabella will meet at the funeral home at 4 p.m. Sunday to recite the rosary.

Services will be at 10 a.m. Monday in St. Rose Church. Burial will be in Mt. Calvary Cemetery. Mr. Hayes was born March 5, 1885, in Mills Grove Township and is a member of the Clifton community for many years.







# AAUW Hears Counselor's Viewpoint On Conformity

Members of the American Association of University Women were given new thoughts on "Conformity" at a meeting Thursday evening in the Centennial Room of Gov. Sam Memorial Park. Guest speaker Miss Ruth Beck, counselor at Maywood-Proviso High School, challenged their thinking on that subject.

She left her audience with the feeling that conformity is neither good nor bad, neither useful nor harmful, depending upon the extent of its use, and she also praised nonconformity. She said that Ralph Waldo Emerson's statement, "Who so would be a man must be a nonconformist," from his essay on "Self-Reliance," first started her thinking on conformity.

DEFINING HER subject, Miss Beck said that conformity is "the

## Auxiliary And School Group Entertain Veterans At Dwight

Members of the Bradley VFW Auxiliary sponsored entertainment for veterans at Dwight Veterans Hospital on Tuesday evening. A talent show was presented by the Dramatics Club of Bradley-Bourbonnais High School under the direction of Miss Agnes Steller.

Gifts were distributed by the auxiliary to bed patients and veterans attending the show. Assembling were Mrs. Mary LeBar, hospital chairman, Mrs. Theodore Gulchinski, Mrs. Walter Cote, Mrs. Richard Owen, Mrs. Frank Petrowski and Mrs. Robert Ashley.

## Berea Class Elects Officers

Officers were elected at a meeting of the Berea Class of First Baptist Church Tuesday evening at the home of Mrs. Bernice Garretts. Serving during the coming year will be Mrs. William Palmer, president; Mrs. Mabel Healy, vice president; Mrs. Hannah Freeman, secretary; Mrs. Garretts, class secretary; Mrs. Stuart, executive officer.

The meeting was conducted by Mrs. Palmer. Mrs. Arma Duvoisin was in charge of devotion, entitled "Food for Thought."

Donations were made to the Crippled Children's Association, American Leprosy Society and the church building fund.

Mrs. Hannah Freeman was assistant hostess. Twenty-two members and two guests were present. Mrs. D. P. Scott closed the meeting in prayer.

The next meeting will be a potluck dinner at the church May 17.

## Winners In Bridge Tournament Announced

Nine tables were in play in the duplicate bridge tournament sponsored by Kankakee Park District Wednesday evening.

North and south winners were E. C. Robertson and Charles Magnuson, first; Mrs. George Holder and Mrs. V. L. Looney, second; and Gaudard Westendorf and Don Phillips, who tied for third with Dr. Max Badger and James Phillips.

East and west winners Mrs. N. K. Bornhauser and Mrs. B. C. Mosher, first; Mrs. David Adams and Mrs. E. R. Richards, who tied for second with Mrs. M. R. Graybill and Mrs. W. J. Heffner; and Wilfred Moss and William Bengtson, third.

The next tournament will be April 27.

## St. Elizabeth's Guild Hears Meditation

St. Elizabeth's Guild of St. Paul's Episcopal Church met Tuesday evening in the guild rooms. A meditation, "The Poetry of Everlasting Life," was read by the Rev. James G. Parker.

A dramatization, "Two Great Saints," was presented by Mrs. Herbert Meyer, Mrs. Albert Miller, Mrs. Ed Hess and Miss Mac Lowey.

Mrs. Meyer conducted the business session. The rector announced parish activities planned for May.

Refreshments were served at a table appointed with an arrangement of wood roses and crosses. Miss Genevieve Potter and Mrs. Richard Riggs were hostesses.

## COIN-O-MATIC SELF SERVICE LAUNDRY

330 WEST STATION STREET—KANKAKEE  
306 SOUTH SCHUYLER—BRADLEY  
1418 EAST WILLOW ST.—KANKAKEE  
★ PLENTY OF HOT WATER  
★ OPEN EVERY DAY

States should continue as a member of the United Nations, believing that the Negro and white should not intermarry, giving support to the United States in preparation for and waging war and supporting the Community Chest.

"The culture of our times tends to support unquestioned conformity," she said. Among an individual's motivation for conformity, she named fear, worship, courtesy, obedience, cooperation, self-realization, satisfaction of suppressed desire, mental or moral inertia and release from tension.

MISS BECK SAID, "It is easy to recognize patterns of conformity in a community. First, evaluate the existing conformity. Then distinguish between major and minor issues. Give support to desirable conformity. Study methods of encouraging constructive nonconformity and then act accordingly."

Rephrasing Emerson's statement with which she opened her talk, Miss Beck concluded by saying, "Who so would be a man must be capable of nonconformity and see fit to practice it."

Mrs. Donald Schneider introduced Miss Beck, who has been active in AAUW work. She has served as president of both the Mishawaka, Ind., and Maywood branches of AAUW and as a member of the state guidance committee of AAUW. She has devoted her career to teaching and counseling.

During the business session, Mrs. Donald Gorkham was elected vice president, and Mrs. Mable Rucker was reelected treasurer.

Mrs. Harold Roal, vice president, presided in the absence of the president, Mrs. Charles Stinson. She announced that the association will send a representative to a meeting on world peace May 1 at which women's organizations from throughout the country will be represented.

Mrs. William Mitchell, chairman of arts and literature, announced that the current literature class will meet April 28 at 8 p.m. at her home, 5 Marquette Lane. Mrs. Charles Schaeve will give a book review.

## Central HB Elects For One-Year Term

Elected to a one-year term of office at a meeting of Central Home Bureau unit Tuesday afternoon were Mrs. Robert Bertrand, president; Mrs. John Ross, secretary; Mrs. Harvey Delude, secretary; and Mrs. James Hudson, treasurer.

The meeting was held at the home of Mrs. Ross. Mrs. Delude presented the major lesson, "Caring for Today's Fabric." She showed numerous samples of materials and washing and ironing instructions for each.

The 18 women present answered roll call by telling, "What I Do When I Do a 1 Please." A new member is Mrs. Landon Richards, and a guest was Mrs. James DeMont.

Mrs. Ernest Schiller presented the slate of officers. Rice cookies were presented to members by Mrs. Hudson.

The president, Mrs. John Padgug, presided at the business session. Announcement was made that play day will be held Wednesday at 2 p.m. at Camp Shaw-way-nassee. The next meeting will be at the home of Mrs. Benjamin Vilt of 250 N. 10th Ave.

## St. James Altar Society Elects

Officers were elected by the Altar and Rosary Society of St. James Church, Irwin, at a meeting Tuesday evening in the school hall. Mrs. Joseph Sullivan is the new president; Mrs. Claude MacVicar, vice president; Mrs. Wendell Eilott, secretary and publicity chairman.

The Rev. Stanislaus Gryga opened the meeting with prayer. The president, Mrs. Lester Offerman, conducted the business meeting.

Twenty-six members were present. "Prayer" was played and prizes awarded to Mrs. Frank Ader, Miss Kathryn Behr, Mrs. John Ferris and Mrs. Jerry McLaughlin.

Refreshments were served by Mrs. Paul Goslin, Mrs. Alex H. O'Connor, Mrs. Stewart Moody and Mrs. Ambrose Perreault.

## Darcho Circle Has Social Meeting

Darcho Circle, Daughters of Rebekah, had a social meeting Monday evening at the Bradley Municipal Building.

Cards were played and prizes awarded to Mrs. Cecelia Amiot, Mrs. Rosetta Alwine and Mrs. Nick Lambert for "500."

Mrs. Richard Landry, Mrs. Carson Stump and Mrs. Gabriel Legris, bridge; and Mrs. Winifred Davis and Mrs. Rene LaGesse, canasta. Refreshments were served by Mrs. William Kennedy, Mrs. Melvina Stoltz, Mrs. Carson Stump, Mrs. William Siefert, Mrs. Adhemar Lambert, Mrs. Agnes Davis and Mrs. Floyd Hayes, chairman. Members will give charity reports at the next meeting May 2.

## Mom... Dad... Bud and Sis...

EACH ACCOUNT INSURED SAFE UP TO \$10,000!

Yes, every account here at friendly MARYCREST SAVINGS is insured up to \$10,000 by an agency of the U.S. Government, called the Federal Savings and Loan Insurance Corporation.

And—did you know every member of your family can open an account here at MARYCREST SAVINGS and each one is insured up to \$10,000.

So besides safety for your savings—you get a big 4% dividend on your savings.

## MARYCREST SAVINGS

AND LOAN ASSOCIATION  
1023 E. COURT ST. • FREE PARKING • KANKAKEE, ILL.  
Open Monday thru Friday 8:30 to 5, Saturdays to 4



## Know-How Simplifies Use of Eye Cosmetics

By JEANNE D'ARCY  
Do you know the proper way to darken eyebrows? First of all, make certain the pencil point is sharp. Then, holding the pencil at an angle, with the point slanting almost straight upward, begin at the outside of the brow, near the ear, and work toward the nose.

This technique will ruffle the hair tips slightly and color the tips without darkening the skin. Brush the brows lightly back into a neat, orderly line and the job is done.

Find it difficult to apply mascara? Maybe you're not tackling the job in the right way. To take the winks and blinks out of an application, try this trick: Hold a mirror flat, right in the palm of your hand. Then drop your chin downward toward your chest and open your mouth a little—this seems to relax facial muscles.

In a ghort, look down—not up!—when you darken lashes. "Never use eye cream?" This is a mistake. According to the experts, every woman should use a lubricating eye cream whether she wears make-up or not. Skin around the eyes is sensitive and tends to show lines. Eye cream keeps this delicate area moist and tends to ward off wrinkles.

Eye cream has other uses, too. Smooth just a dab of it over brows to create a better eye shadow. If used before bedtime, you'll find the cream also helps to remove mascara. Take care in applying. Gently do it! Don't rub or use too firm a touch because skin around the eye area is easily bruised or stretched.

## SYLVANIA STEREO

Complete with AM-FM Radio  
Blonde or Mahogany Deluxe Console  
\$169.95  
\$10 Down—\$8 Month

## GUISS FURNITURE

Just 6¢ a Day Can Help Build Rich, Red Blood... Save You From Being TIRED... NERVOUS...

## the COUNTRY FARE

Now Open Daily 5 to 9 P.M.—Sundays 12 to 7 P.M.  
6 Miles from BIRD PARK on 113 South

Mom... Dad... Bud and Sis...  
EACH ACCOUNT INSURED SAFE UP TO \$10,000!

Yes, every account here at friendly MARYCREST SAVINGS is insured up to \$10,000 by an agency of the U.S. Government, called the Federal Savings and Loan Insurance Corporation.

And—did you know every member of your family can open an account here at MARYCREST SAVINGS and each one is insured up to \$10,000.

So besides safety for your savings—you get a big 4% dividend on your savings.

## MARYCREST SAVINGS

AND LOAN ASSOCIATION  
1023 E. COURT ST. • FREE PARKING • KANKAKEE, ILL.  
Open Monday thru Friday 8:30 to 5, Saturdays to 4

## BEXEL

Supplement your diet every day with just one BEXEL Vitamin Capsule. BEXEL is a powerful vitamin and iron content nature provides in the groups of the following foods before cooking:

- 1/2 lb. of green peas
- 1/2 lb. of green beans
- 1/2 lb. of green lentils
- 1/2 lb. of green chickpeas
- 1/2 lb. of green soybeans
- 1/2 lb. of green mung beans
- 1/2 lb. of green adzuki beans
- 1/2 lb. of green black beans
- 1/2 lb. of green pinto beans
- 1/2 lb. of green navy beans
- 1/2 lb. of green lima beans
- 1/2 lb. of green butter beans
- 1/2 lb. of green kidney beans
- 1/2 lb. of green cannellini beans
- 1/2 lb. of green great northern beans
- 1/2 lb. of green chickpeas
- 1/2 lb. of green lentils
- 1/2 lb. of green peas
- 1/2 lb. of green soybeans
- 1/2 lb. of green mung beans
- 1/2 lb. of green adzuki beans
- 1/2 lb. of green black beans
- 1/2 lb. of green pinto beans
- 1/2 lb. of green navy beans
- 1/2 lb. of green lima beans
- 1/2 lb. of green butter beans
- 1/2 lb. of green kidney beans
- 1/2 lb. of green cannellini beans
- 1/2 lb. of green great northern beans

## Lydia Circle Hears Panel On Town, Country Churches

Program chairman, Mrs. Frank Weller, was moderator for a panel discussion on "Work of Church in Town and Country" at a meeting of Lydia Circle of First Methodist Church Tuesday afternoon. Panel members were Mrs. Harry E. Cole, Mrs. Emil Erickson, Mrs. F. Fern Siedentop and Mrs. Fred H. Wood.

Hostesses for the meeting were Mrs. Harris Jannusch of 1074 E. Merchant St. She was assisted by Mrs. Leslie C. White.

Mrs. White, chairman, presided at the business meeting. Devotions on the topic, "The Dynamics of Prayer," were given by Mrs. Caroline Berge of Pasadena, Calif.

Plans were discussed for collecting final dues on cultivation and pledges. An invitation was read from Dr. Armin H. Wolff, superintendent at Kankakee State Hospital, to the hospital's open house May 1 from 1 to 4 p.m.

Mrs. Cole announced that a one-day study class on "The Church's Mission in Town and Country" will be held in the near future. Mrs. White reported on an executive board meeting and announced that five members of the Women's Society of Christian Service attended the conference's annual meeting Wednesday in Bloomington. They were Mrs. M. D. Beasley, Mrs. E. B. Blackstock, Mrs. William Bohne, Mrs. H. E. Cole and Mrs. R. P. Emigh.

Mrs. White urged members to attend installation services at the general WSCS meeting May 10, which will be combined with a membership tea. Members may bring guests. Circle members who will be hostesses for that occasion, completed plans for the afternoon's entertainment.

A dessert tea was served at a table centered by an arrangement of forsythia, jonquilla and a hyacinth. Twenty-one members, and two guests, Mrs. Berge and Miss Holly Bowler, were present.

The next circle meeting will be a potluck luncheon May 17 at the home of Mrs. Erickson, who will be assisted by Mrs. W. L. McDonniston, completed plans for the afternoon's entertainment.

## Spring Is In The Air At Home Furnishings!

USE A SHARP PENCIL to darken eyebrows. Hold pencil so point slants upward, work from far end of brow toward nose.

Deluxe STROLLER SLEEPER WALKER  
Rumble Seat for extra passengers... or deluxe car seat.  
Redner... with new one-hand reclining adjustment.

## Know-How Simplifies Use of Eye Cosmetics

By JEANNE D'ARCY  
Do you know the proper way to darken eyebrows? First of all, make certain the pencil point is sharp. Then, holding the pencil at an angle, with the point slanting almost straight upward, begin at the outside of the brow, near the ear, and work toward the nose.

This technique will ruffle the hair tips slightly and color the tips without darkening the skin. Brush the brows lightly back into a neat, orderly line and the job is done.

Find it difficult to apply mascara? Maybe you're not tackling the job in the right way. To take the winks and blinks out of an application, try this trick: Hold a mirror flat, right in the palm of your hand. Then drop your chin downward toward your chest and open your mouth a little—this seems to relax facial muscles.

In a ghort, look down—not up!—when you darken lashes. "Never use eye cream?" This is a mistake. According to the experts, every woman should use a lubricating eye cream whether she wears make-up or not. Skin around the eyes is sensitive and tends to show lines. Eye cream keeps this delicate area moist and tends to ward off wrinkles.

Eye cream has other uses, too. Smooth just a dab of it over brows to create a better eye shadow. If used before bedtime, you'll find the cream also helps to remove mascara. Take care in applying. Gently do it! Don't rub or use too firm a touch because skin around the eye area is easily bruised or stretched.

## SYLVANIA STEREO

Complete with AM-FM Radio  
Blonde or Mahogany Deluxe Console  
\$169.95  
\$10 Down—\$8 Month

## GUISS FURNITURE

Just 6¢ a Day Can Help Build Rich, Red Blood... Save You From Being TIRED... NERVOUS...

## the COUNTRY FARE

Now Open Daily 5 to 9 P.M.—Sundays 12 to 7 P.M.  
6 Miles from BIRD PARK on 113 South

Mom... Dad... Bud and Sis...  
EACH ACCOUNT INSURED SAFE UP TO \$10,000!

Yes, every account here at friendly MARYCREST SAVINGS is insured up to \$10,000 by an agency of the U.S. Government, called the Federal Savings and Loan Insurance Corporation.

And—did you know every member of your family can open an account here at MARYCREST SAVINGS and each one is insured up to \$10,000.

So besides safety for your savings—you get a big 4% dividend on your savings.

## MARYCREST SAVINGS

AND LOAN ASSOCIATION  
1023 E. COURT ST. • FREE PARKING • KANKAKEE, ILL.  
Open Monday thru Friday 8:30 to 5, Saturdays to 4

## BEXEL

Supplement your diet every day with just one BEXEL Vitamin Capsule. BEXEL is a powerful vitamin and iron content nature provides in the groups of the following foods before cooking:

- 1/2 lb. of green peas
- 1/2 lb. of green beans
- 1/2 lb. of green lentils
- 1/2 lb. of green chickpeas
- 1/2 lb. of green soybeans
- 1/2 lb. of green mung beans
- 1/2 lb. of green adzuki beans
- 1/2 lb. of green black beans
- 1/2 lb. of green pinto beans
- 1/2 lb. of green navy beans
- 1/2 lb. of green lima beans
- 1/2 lb. of green butter beans
- 1/2 lb. of green kidney beans
- 1/2 lb. of green cannellini beans
- 1/2 lb. of green great northern beans

## Rebekah Members Attend District Meeting At Gilman

Members of the local Rebekah Lodge took part in the ninth semi-annual session of the 15th district association Rebekah Assembly on Wednesday at the IOOF hall in Gilman. Among those attending were Mrs. Mary Kenning of Lincoln, president of the state assembly, and Mrs. Laura Wade of Kankakee, secretary of the state organization.

Others from Kankakee were Mrs. William Moore, vice president of district 15; Mrs. Rollin Dunbar, district deputy president; Mrs. Earl Nakeman, chairman of the district; Mrs. Robert White, left supporter to the president of the district; and Mrs. Rose Milk, publicity representative. Mrs. James Rogers of Gilman, district president, was also in attendance.

Mrs. Moore gave the response during the afternoon session. The evening session was formal with members of the Kankakee lodge participating in the presentation of assembly appointees and past district presidents. Mrs. Larson Crump, noble grand, Mrs. Jack Kirk, Mrs. Guy See, Mrs. Milk and Mrs. Charles Simmons served as escorts, holding the golden key and presenting red roses to each appointee and past president.

Mrs. John Smith, past noble grand of Kankakee, presented these officers, and Mrs. Clifford Smith of Gilman was soloist.

## Coming Social Events

FRIDAY  
7:30 p.m.—Postal Clerks Auxiliary, Mrs. Chet Yocum, RR 2, Kankakee.  
8 p.m.—Harriet Scoville Rebekah Lodge, Odd Fellows Temple.  
SATURDAY  
7 p.m.—Mr. and Mrs. Newcomer, Tri-K Restaurant, dinner and cards.  
SUNDAY  
7:30 a.m.—Beatrice Society of Reorganized Church of Jesus Christ of Latter Day Saints, at the church.  
MONDAY  
8 p.m.—The Keyettes, Mrs. Dave Coon, 811 S. Greenwood Ave.  
TUESDAY  
6:30 p.m.—Delphi, Hotel Kankakee, dinner meeting.  
7:30 p.m.—Altar Guild of American Lutheran Church, Luther Hall.  
WEDNESDAY  
9 a.m.—Ladies of the GAR, 105 W. Station St., quilting, potluck at noon, business meeting at 1:30 p.m.  
9:30 a.m.—Kankakee County Community Service Group of the American Cancer Society, First Evangelical United Brethren Church, Beckers Hall, lunch at noon.  
12:30 p.m.—Kankakee Valley Elks Golf Club, opening ladies luncheon at the club.  
7:30 p.m.—International Club, YWCA.  
7:30 p.m.—Military Order of Ladybuds, VFW Hall.  
7:45 p.m.—Newcomers Club, American Legion Home, dessert bridge, canasta.  
7:30 p.m.—Pythian Sisters, Riverview Temple, 174, Moose Hall.  
7:45 p.m.—Kankakee Mothers of World War II Unit 81, Knights of Columbus Hall.  
8 p.m.—Elks Club Mixed Bridge, downtown club.



## Sodality Card Party Tuesday

"April Showers" will be the theme for the public card party to be sponsored by St. Anne's Sodality of St. Joseph's Church, Bradley, Tuesday at 8 p.m. at St. Patrick Central High School. Final arrangements for the event are being made by, from left, Mrs. Leo Pechauer, co-chairman; Mrs. Henry Kaminski, refreshment chairman; Mrs. Joseph Barrett, ticket chairman; and Mrs. Erich Merscheidt, general chairman, as they work on the dainty aprons to be awarded as table prizes. Special prizes will also be awarded. Proceeds will go toward the sodality's pledge to the church building fund. Not pictured is Mrs. William Johnson, ticket co-chairman. (Journal photo)

## Jobs Daughters Plan Organization Birthday Party

Plans were made for a June 1 a DeMolay installation on May 7. Refreshments were served by organization birthday party when there was a request for workers. The International Order of Jobs on an April 23 cancer drive. Jobs Daughters met Wednesday at the untiers to meet at the home of Masonic Temple with Miss Kay Miss Sederstrand, 356 S. Winfield Sederstrand, honored guest, presiding. The party will mark the fifth birthday of the order, and the next regular meeting will be on May 4.

## GUISS FURNITURE IS OPEN EVENINGS SATURDAY SALE

THESE ITEMS ON SALE FROM 6 P. M. FRIDAY TO 8 P. M. SATURDAY—ALL SALES AFTER AT REGULAR PRICES.

## SOFA and CHAIR \$138

• FOAM CUSHIONS  
• GOOD COVERS  
• YOUR CHOICE OF COVERS  
\$5 DOWN—\$8 PER MONTH

## BEDROOM SUITE \$98

• CHEST • BOOKCASE BED  
• DRESSER AND MIRROR  
\$5 DOWN—\$6 PER MONTH

## KITCHEN SET \$36

5-PIECE  
• CHROME AND FORMICA TOP  
\$5 DOWN—\$5 PER MONTH

## 3 Pc. SECTIONALS \$219

• FOAM CUSHIONS  
• GOOD COVERS  
• BLACK, BROWN, BEIGE, ROSE, GREEN, TURQUOISE  
\$10 DOWN—\$10 PER MONTH

## You'll Always Buy For Less At...

## GUISS FURNITURE Of Bradley

375,700 families served by Northern Illinois Gas Company already enjoy Gas heating. From the very start, you too will find this the ideal method of home heating. Apply now for your Gas heat permit at our nearest office. Gas does it better for LESS!

## Rebekah Members Attend District Meeting At Gilman

Members of the local Rebekah Lodge took part in the ninth semi-annual session of the 15th district association Rebekah Assembly on Wednesday at the IOOF hall in Gilman. Among those attending were Mrs. Mary Kenning of Lincoln, president of the state assembly, and Mrs. Laura Wade of Kankakee, secretary of the state organization.

Others from Kankakee were Mrs. William Moore, vice president of district 15; Mrs. Rollin Dunbar, district deputy president; Mrs. Earl Nakeman, chairman of the district; Mrs. Robert White, left supporter to the president of the district; and Mrs. Rose Milk, publicity representative. Mrs. James Rogers of Gilman, district president, was also in attendance.

Mrs. Moore gave the response during the afternoon session. The evening session was formal with members of the Kankakee lodge participating in the presentation of assembly appointees and past district presidents. Mrs. Larson Crump, noble grand, Mrs. Jack Kirk, Mrs. Guy See, Mrs. Milk and Mrs. Charles Simmons served as escorts, holding the golden key and presenting red roses to each appointee and past president.

Mrs. John Smith, past noble grand of Kankakee, presented these officers, and Mrs. Clifford Smith of Gilman was soloist.

## Coming Social Events

FRIDAY  
7:30 p.m.—Postal Clerks Auxiliary, Mrs. Chet Yocum, RR 2, Kankakee.  
8 p.m.—Harriet Scoville Rebekah Lodge, Odd Fellows Temple.  
SATURDAY  
7 p.m.—Mr. and Mrs. Newcomer, Tri-K Restaurant, dinner and cards.  
SUNDAY  
7:30 a.m.—Beatrice Society of Reorganized Church of Jesus Christ of Latter Day Saints, at the church.  
MONDAY  
8 p.m.—The Keyettes, Mrs. Dave Coon, 811 S. Greenwood Ave.  
TUESDAY  
6:30 p.m.—Delphi, Hotel Kankakee, dinner meeting.  
7:30 p.m.—Altar Guild of American Lutheran Church, Luther Hall.  
WEDNESDAY  
9 a.m.—Ladies of the GAR, 105 W. Station St., quilting, potluck at noon, business meeting at 1:30 p.m.  
9:30 a.m.—Kankakee County Community Service Group of the American Cancer Society, First Evangelical United Brethren Church, Beckers Hall, lunch at noon.  
12:30 p.m.—Kankakee Valley Elks Golf Club, opening ladies luncheon at the club.  
7:30 p.m.—International Club, YWCA.  
7:30 p.m.—Military Order of Ladybuds, VFW Hall.  
7:45 p.m.—Newcomers Club, American Legion Home, dessert bridge, canasta.  
7:30 p.m.—Pythian Sisters, Riverview Temple, 174, Moose Hall.  
7:45 p.m.—Kankakee Mothers of World War II Unit 81, Knights of Columbus Hall.  
8 p.m.—Elks Club Mixed Bridge, downtown club.

## Rebekah Members Attend District Meeting At Gilman

Members of the local Rebekah Lodge took part in the ninth semi-annual session of the 15th district association Rebekah Assembly on Wednesday at the IOOF hall in Gilman. Among those attending were Mrs. Mary Kenning of Lincoln, president of the state assembly, and Mrs. Laura Wade of Kankakee, secretary of the state organization.

Others from Kankakee were Mrs. William Moore, vice president of district 15; Mrs. Rollin Dunbar, district deputy president; Mrs. Earl Nakeman, chairman of the district; Mrs. Robert White, left supporter to the president of the district; and Mrs. Rose Milk, publicity representative. Mrs. James Rogers of Gilman, district president, was also in attendance.

Mrs. Moore gave the response during the afternoon session. The evening session was formal with members of the Kankakee lodge participating in the presentation of assembly appointees and past district presidents. Mrs. Larson Crump, noble grand, Mrs. Jack Kirk, Mrs. Guy See, Mrs. Milk and Mrs. Charles Simmons served as escorts, holding the golden key and presenting red roses to each appointee and past president.

Mrs. John Smith, past noble grand of Kankakee, presented these officers, and Mrs. Clifford Smith of Gilman was soloist.

## Coming Social Events

FRIDAY  
7:30 p.m.—Postal Clerks Auxiliary, Mrs. Chet Yocum, RR 2, Kankakee.  
8 p.m.—Harriet Scoville Rebekah Lodge, Odd Fellows Temple.  
SATURDAY  
7 p.m.—Mr. and Mrs. Newcomer, Tri-K Restaurant, dinner and cards.  
SUNDAY  
7:30 a.m.—Beatrice Society of Reorganized Church of Jesus Christ of Latter Day Saints, at the church.  
MONDAY  
8 p.m.—The Keyettes, Mrs. Dave Coon, 811 S. Greenwood Ave.  
TUESDAY  
6:30 p.m.—Delphi, Hotel Kankakee, dinner meeting.  
7:30 p.m.—Altar Guild of American Lutheran Church, Luther Hall.  
WEDNESDAY  
9 a.m.—Ladies of the GAR, 105 W. Station St., quilting, potluck at noon, business meeting at 1:30 p.m.  
9:30 a.m.—Kankakee County Community Service Group of the American Cancer Society, First Evangelical United Brethren Church, Beckers Hall, lunch at noon.  
12:30 p.m.—Kankakee Valley Elks Golf Club, opening ladies luncheon at the club.  
7:30 p.m.—International Club, YWCA.  
7:30 p.m.—Military Order of Ladybuds, VFW Hall.  
7:45 p.m.—Newcomers Club, American Legion Home, dessert bridge, canasta.  
7:30 p.m.—Pythian Sisters, Riverview Temple, 174, Moose Hall.  
7:45 p.m.—Kankakee Mothers of World War II Unit 81, Knights of Columbus Hall.  
8 p.m.—Elks Club Mixed Bridge, downtown club.

## Rebekah Members Attend District Meeting At Gilman

Members of the local Rebekah Lodge took part in the ninth semi-annual session of the 15th district association Rebekah Assembly on Wednesday at the IOOF hall in Gilman. Among those attending were Mrs. Mary Kenning of Lincoln, president of the state assembly, and Mrs. Laura Wade of Kankakee, secretary of the state organization.

Others from Kankakee were Mrs. William Moore, vice president of district 15; Mrs. Rollin Dunbar, district deputy president; Mrs. Earl Nakeman, chairman of the district; Mrs. Robert White, left supporter to the president of the district; and Mrs. Rose Milk, publicity representative. Mrs. James Rogers of Gilman, district president, was also in attendance.

Mrs. Moore gave the response during the afternoon session. The evening session was formal with members of the Kankakee lodge participating in the presentation of assembly appointees and past district presidents. Mrs. Larson Crump, noble grand, Mrs. Jack Kirk, Mrs. Guy See, Mrs. Milk and Mrs. Charles Simmons served as escorts, holding the golden key and presenting red roses to each appointee and past president.

Mrs. John Smith, past noble grand of Kankakee, presented these officers, and Mrs. Clifford Smith of Gilman was soloist.

## Coming Social Events

FRIDAY  
7:30 p.m.—Postal Clerks Auxiliary, Mrs. Chet Yocum, RR 2, Kankakee.  
8 p.m.—Harriet Scoville Rebekah Lodge, Odd Fellows Temple.  
SATURDAY  
7 p.m.—Mr. and Mrs. Newcomer, Tri-K Restaurant, dinner and cards.  
SUNDAY  
7:30 a.m.—Beatrice Society of Reorganized Church of Jesus Christ of Latter Day Saints, at the church.  
MONDAY  
8 p.m.—The Keyettes, Mrs. Dave Coon, 811 S. Greenwood Ave.  
TUESDAY  
6:30 p.m.—Delphi, Hotel Kankakee, dinner meeting.  
7:30 p.m.—Altar Guild of American Lutheran Church, Luther Hall.  
WEDNESDAY  
9 a.m.—Ladies of the GAR, 105 W. Station St., quilting, potluck at noon, business meeting at 1:30 p.m.  
9:30 a.m.—Kankakee County Community Service Group of the American Cancer Society, First Evangelical United Brethren Church, Beckers Hall, lunch at noon.  
12:30 p.m.—Kankakee Valley Elks Golf Club, opening ladies luncheon at the club.  
7:30 p.m.—International Club, YWCA.  
7:30 p.m.—Military Order of Ladybuds, VFW Hall.  
7:45 p.m.—Newcomers Club, American Legion Home, dessert bridge, canasta.  
7:30 p.m.—Pythian Sisters, Riverview Temple, 174, Moose Hall.  
7:45 p.m.—Kankakee Mothers of World War II Unit 81, Knights of Columbus Hall.  
8 p.m.—Elks Club Mixed Bridge, downtown club.

## Rebekah Members Attend District Meeting At Gilman

Members of the local Rebekah Lodge took part in the ninth semi-annual session of the 15th district association Rebekah Assembly on Wednesday at the IOOF hall in Gilman. Among those attending were Mrs. Mary Kenning of Lincoln, president of the state assembly, and Mrs. Laura Wade of Kankakee, secretary of the state organization.

Others from Kankakee were Mrs. William Moore, vice president of district 15; Mrs. Rollin Dunbar, district deputy president; Mrs. Earl Nakeman, chairman of the district; Mrs. Robert White, left supporter to the president of the district; and Mrs. Rose Milk, publicity representative. Mrs. James Rogers of Gilman, district president, was also in attendance.

Mrs. Moore gave the response during the afternoon session. The evening session was formal with members of the Kankakee lodge participating in the presentation of assembly appointees and past district presidents. Mrs. Larson Crump, noble grand, Mrs. Jack Kirk, Mrs. Guy See, Mrs. Milk and Mrs. Charles Simmons served as escorts, holding the golden key and presenting red roses to each appointee and past president.

Mrs. John Smith, past noble grand of Kankakee, presented these officers, and Mrs. Clifford Smith of Gilman was soloist.

## Coming Social Events

FRIDAY  
7:30 p.m.—Postal Clerks Auxiliary, Mrs. Chet Yocum, RR 2, Kankakee.  
8 p.m.—Harriet Scoville Rebekah Lodge, Odd Fellows Temple.  
SATURDAY  
7 p.m.—Mr. and Mrs. Newcomer, Tri-K Restaurant, dinner and cards.  
SUNDAY  
7:30 a.m.—Beatrice Society of Reorganized Church of Jesus Christ of Latter Day Saints, at the church.  
MONDAY  
8 p.m.—The Keyettes, Mrs. Dave Coon, 811 S. Greenwood Ave.  
TUESDAY  
6:30 p.m.—Delphi, Hotel Kankakee, dinner meeting.  
7:30 p.m.—Altar Guild of American Lutheran Church, Luther Hall











# Natural GOLF

By JIMMY DEMARET

Chip shots are hit from the fringe areas of the greens. There the finest players make one quarter of their pars and birdies. This happens in regulation figures, but then chip up and take but a single putt. Chipping is as important as striking long putts close to the hole. The whole practical theory of chipping relates it to putting as close as is possible.



Always select the club with the least amount of loft capable of clearing any intermediate contouring and running the ball close to the hole. Do nothing to help lift the ball. Trust the built-in loft of the club and the correctness of the swing.

The swing doesn't vary in terms of swing technique basics.

## Dwight Wins 26th Straight Track Meet At Home

MEET (JNS)—Coach Bill Gilkey's Dwight tracksters won their 26th straight home meet over a three season period here Thursday afternoon 7:45 over Forest-Straus-Wing.

The Trojans have won four meets in as many starts here this spring.

The meet was highlighted by the setting of two school records, one for each school.

Junior Jack Honneger, Forest's best weightman in recent years, snapped his old mark of 48 feet, six inches in the shotput by heaving the 12-pound ball 49 feet.

Honneger won the discus also in 137.9 but Dave Potthoff's second place toss of 120 feet broke the old Dwight school mark of 119.1 set by Joel Danker last spring.

100 yard dash—1. Moyment (F). Time—1:12.5.

200 yard dash—1. Moyment (F). Time—2:35.0.

400 yard dash—1. Kreyler (F). Time—1:12.5.

800 yard dash—1. Ricketts (F). Time—2:12.5.

1600 yard dash—1. Volga (D). Time—4:45.0.

3200 yard dash—1. Gilgaffe (F). Time—9:45.0.

6400 yard dash—1. Jim Honneger (F). Time—19:45.0.

12800 yard dash—1. Kreyler (F). Time—39:45.0.

25600 yard dash—1. Honneger (F). Time—1:19:45.0.

51200 yard dash—1. Honneger (F). Time—2:39:45.0.

102400 yard dash—1. Honneger (F). Time—5:19:45.0.

204800 yard dash—1. Honneger (F). Time—10:39:45.0.

409600 yard dash—1. Honneger (F). Time—21:19:45.0.

819200 yard dash—1. Honneger (F). Time—42:39:45.0.

1638400 yard dash—1. Honneger (F). Time—84:59:45.0.

3276800 yard dash—1. Honneger (F). Time—169:59:45.0.

6553600 yard dash—1. Honneger (F). Time—339:59:45.0.

13107200 yard dash—1. Honneger (F). Time—679:59:45.0.

26214400 yard dash—1. Honneger (F). Time—1359:59:45.0.

52428800 yard dash—1. Honneger (F). Time—2719:59:45.0.

104857600 yard dash—1. Honneger (F). Time—5439:59:45.0.

209715200 yard dash—1. Honneger (F). Time—10879:59:45.0.

419430400 yard dash—1. Honneger (F). Time—21759:59:45.0.

838860800 yard dash—1. Honneger (F). Time—43519:59:45.0.

1677721600 yard dash—1. Honneger (F). Time—87039:59:45.0.

3355443200 yard dash—1. Honneger (F). Time—174079:59:45.0.

6710886400 yard dash—1. Honneger (F). Time—348159:59:45.0.

13421772800 yard dash—1. Honneger (F). Time—696319:59:45.0.

26843545600 yard dash—1. Honneger (F). Time—1392639:59:45.0.

53687091200 yard dash—1. Honneger (F). Time—2785279:59:45.0.

107374182400 yard dash—1. Honneger (F). Time—5570559:59:45.0.

214748364800 yard dash—1. Honneger (F). Time—11141119:59:45.0.

429496729600 yard dash—1. Honneger (F). Time—22282239:59:45.0.

858993459200 yard dash—1. Honneger (F). Time—44564479:59:45.0.

1717986918400 yard dash—1. Honneger (F). Time—89128959:59:45.0.

3435973836800 yard dash—1. Honneger (F). Time—178257919:59:45.0.

6871947673600 yard dash—1. Honneger (F). Time—356515839:59:45.0.

13743895347200 yard dash—1. Honneger (F). Time—713031679:59:45.0.

27487790694400 yard dash—1. Honneger (F). Time—1426063359:59:45.0.

54975581388800 yard dash—1. Honneger (F). Time—2852126719:59:45.0.

109951162777600 yard dash—1. Honneger (F). Time—5704253439:59:45.0.

219902325555200 yard dash—1. Honneger (F). Time—11408506879:59:45.0.

439804651110400 yard dash—1. Honneger (F). Time—22817013759:59:45.0.

879609302220800 yard dash—1. Honneger (F). Time—45634027519:59:45.0.

1759218604441600 yard dash—1. Honneger (F). Time—91268055039:59:45.0.

3518437208883200 yard dash—1. Honneger (F). Time—182536110079:59:45.0.

7036874417766400 yard dash—1. Honneger (F). Time—365072220159:59:45.0.

14073748835532800 yard dash—1. Honneger (F). Time—730144440319:59:45.0.

28147497671065600 yard dash—1. Honneger (F). Time—1460288880639:59:45.0.

56294995342131200 yard dash—1. Honneger (F). Time—2920577761279:59:45.0.

112589990684262400 yard dash—1. Honneger (F). Time—5841155522559:59:45.0.

225179981368524800 yard dash—1. Honneger (F). Time—11682311045119:59:45.0.

450359962737049600 yard dash—1. Honneger (F). Time—23364622090239:59:45.0.

900719925474099200 yard dash—1. Honneger (F). Time—46729244180479:59:45.0.

1801439850948198400 yard dash—1. Honneger (F). Time—93458488360959:59:45.0.

3602879701896396800 yard dash—1. Honneger (F). Time—186916976721919:59:45.0.

7205759403792793600 yard dash—1. Honneger (F). Time—373833953443839:59:45.0.

14411518807585587200 yard dash—1. Honneger (F). Time—747667906887679:59:45.0.

28823037615171174400 yard dash—1. Honneger (F). Time—1495335813775359:59:45.0.

57646075230342348800 yard dash—1. Honneger (F). Time—2990671627550719:59:45.0.

115292150460684697600 yard dash—1. Honneger (F). Time—5981343255101439:59:45.0.

230584300921369395200 yard dash—1. Honneger (F). Time—11962686510202879:59:45.0.

461168601842738790400 yard dash—1. Honneger (F). Time—23925373020405759:59:45.0.

922337203685477580800 yard dash—1. Honneger (F). Time—47850746040811519:59:45.0.

1844674407370955161600 yard dash—1. Honneger (F). Time—95701492081623039:59:45.0.

3689348814741910323200 yard dash—1. Honneger (F). Time—191402984163246079:59:45.0.

7378697629483820646400 yard dash—1. Honneger (F). Time—382805968326492159:59:45.0.

14757395258967641292800 yard dash—1. Honneger (F). Time—765611936652984319:59:45.0.

29514790517935282585600 yard dash—1. Honneger (F). Time—1531223873305968639:59:45.0.

59029581035870565171200 yard dash—1. Honneger (F). Time—3062447746611937279:59:45.0.

118059162071741130342400 yard dash—1. Honneger (F). Time—6124895493223874559:59:45.0.

236118324143482260684800 yard dash—1. Honneger (F). Time—12249790986447749119:59:45.0.

472236648286964521369600 yard dash—1. Honneger (F). Time—24499581972895498239:59:45.0.

944473296573929042739200 yard dash—1. Honneger (F). Time—48999163945790996479:59:45.0.

1888946593147858085478400 yard dash—1. Honneger (F). Time—97998327891581992959:59:45.0.

3777893186295716170956800 yard dash—1. Honneger (F). Time—195996655783163985919:59:45.0.

7555786372591432341913600 yard dash—1. Honneger (F). Time—391993311566327971839:59:45.0.

15111572745182864683827200 yard dash—1. Honneger (F). Time—783986623132655943679:59:45.0.

30223145490365729367654400 yard dash—1. Honneger (F). Time—1567973246265311887359:59:45.0.

60446290980731458735308800 yard dash—1. Honneger (F). Time—3135946492530623774719:59:45.0.

120892581961462917470617600 yard dash—1. Honneger (F). Time—6271892985061247549439:59:45.0.

241785163922925834941235200 yard dash—1. Honneger (F). Time—12543785970122495098879:59:45.0.

483570327845851669882470400 yard dash—1. Honneger (F). Time—25087571940244990197759:59:45.0.

967140655691703339764940800 yard dash—1. Honneger (F). Time—50175143880489980395519:59:45.0.

1934281311383406679529881600 yard dash—1. Honneger (F). Time—100350287760979960791039:59:45.0.

3868562622766813359059763200 yard dash—1. Honneger (F). Time—200700575521959921582079:59:45.0.

7737125245533626718119526400 yard dash—1. Honneger (F). Time—401401151043919843164159:59:45.0.

15474250491067253436239052800 yard dash—1. Honneger (F). Time—802802302087839686328319:59:45.0.

30948500982134506872478105600 yard dash—1. Honneger (F). Time—1605604604175679372656639:59:45.0.

61897001964269013744956211200 yard dash—1. Honneger (F). Time—3211209208351358745313279:59:45.0.

123794003928538027489912422400 yard dash—1. Honneger (F). Time—6422418416702717490626559:59:45.0.

247588007857076054979824844800 yard dash—1. Honneger (F). Time—12844836833405434981253119:59:45.0.

495176015714152109959649689600 yard dash—1. Honneger (F). Time—25689673666810869962506239:59:45.0.

990352031428304219919399379200 yard dash—1. Honneger (F). Time—51379347333621739925012479:59:45.0.

1980704062856608439838798758400 yard dash—1. Honneger (F). Time—102758694667243479850024959:59:45.0.

3961408125713216879677597516800 yard dash—1. Honneger (F). Time—205517389334486959700049919:59:45.0.

7922816251426433759355195033600 yard dash—1. Honneger (F). Time—411034778668973919400099839:59:45.0.

15845632502852867518710390067200 yard dash—1. Honneger (F). Time—822069557337947838800199679:59:45.0.

31691265005705735037420780134400 yard dash—1. Honneger (F). Time—1644139114675895677600399359:59:45.0.

63382530011411470074841560268800 yard dash—1. Honneger (F). Time—3288278229351791355200798719:59:45.0.

126765060022822940149683120537600 yard dash—1. Honneger (F). Time—6576556458703582710401597439:59:45.0.

253530120045645880299366241075200 yard dash—1. Honneger (F). Time—13153112917407165420803194879:59:45.0.

507060240091291760598732482150400 yard dash—1. Honneger (F). Time—26306225834814330841606389759:59:45.0.

1014120480182583521197464964300800 yard dash—1. Honneger (F). Time—52612451669628661683212779519:59:45.0.

2028240960365167042394929928601600 yard dash—1. Honneger (F). Time—105224903339257323366425549039:59:45.0.

4056481920730334084789859857203200 yard dash—1. Honneger (F). Time—210449806678514646732851098079:59:45.0.

8112963841460668169579719714406400 yard dash—1. Honneger (F). Time—420899613357029293465702196159:59:45.0.

16225927682921336339159439428812800 yard dash—1. Honneger (F). Time—841799226714058586931404392319:59:45.0.

32451855365842672678318878857625600 yard dash—1. Honneger (F). Time—1683598533428117173862808694639:59:45.0.

64903710731685345356637757715251200 yard dash—1. Honneger (F). Time—3367197066856234347725617389279:59:45.0.

129807421463370690713275515430502400 yard dash—1. Honneger (F). Time—6734394133712468695451234778559:59:45.0.

259614842926741381426551030861004800 yard dash—1. Honneger (F). Time—13468788267424937390902469557119:59:45.0.

51922968585348276285310206172209600 yard dash—1. Honneger (F). Time—26937576534849874781804939114239:59:45.0.

103845937170696552570620412344419200 yard dash—1. Honneger (F). Time—53875153069699749563609878228479:59:45.0.

207691874341393105141240824688838400 yard dash—1. Honneger (F). Time—107750306139399499127219756456959:59:45.0.

415383748682786210282481649377676800 yard dash—1. Honneger (F). Time—215500612278798998254439512913919:59:45.0.

830767497365572420564963298755353600 yard dash—1. Honneger (F). Time—431001224557597996508879025827839:59:45.0.

166153499473114484112992659751067200 yard dash—1. Honneger (F). Time—862002449115195993017758051655679:59:45.0.

332306998946228968225985319502134400 yard dash—1. Honneger (F). Time—1724004898230391986035516013311359:59:45.0.

664613997892457936451970639004268800 yard dash—1. Honneger (F). Time—3448009796460783972071032026622719:59:45.0.

1329227995784915872903941278009537600 yard dash—1. Honneger (F). Time—6896019592921567944142064053245439:59:45.0.

2658455991569831745807882556019075200 yard dash—1. Honneger (F). Time—13792039185843135888284128104910879:59:45.0.

5316911983139663491601765112038150400 yard dash—1. Honneger (F). Time—27584078371686271776568256209821759:59:45.0.

10633823966279326983203530224076300800 yard dash—1. Honneger (F). Time—55168156743372543553136512419643519:59:45.0.

2126764793255865396640706044815261600 yard dash—1. Honneger (F). Time—11033631348674508710627302483928719:59:45.0.

4253529586511730793281412089630523200 yard dash—1. Honneger (F). Time—22067262697349017421254604967857439:59:45.0.

8507059173023461586562824179260446400 yard dash—1. Honneger (F). Time—44134525394698034842509209935714879:59:45.0.

17014118346046923173125728358520892800 yard dash—1. Honneger (F). Time—88269050789396069685018419871429759:59:45.0.

34028236692093846346251456717041785600 yard dash—1. Honneger (F). Time—17653810157879213937003683974285959:59:45.0.

68056473384187692692502913434083571200 yard dash—1. Honneger (F). Time—35307620315758427874007367948571919:59:45.0.

136112946768375385385005826868167142400 yard dash—1. Honneger (F). Time—70615240631516855748014735897143839:59:45.0.

272225893536750770770011653736334284800 yard dash—1. Honneger (F). Time—14123048126303371149602947179428779:59:45.0.

544451787073501541540023307472668569600 yard dash—1. Honneger (F). Time—28246096252606742299205894358857559:59:45.0.

1088903574147003083080046614955337139200 yard dash—1. Honneger (F). Time—56492192505213484598411788717715119:59:45.0.

2177807148294006166160092299011066678400 yard dash—1. Honneger (F). Time—112984385010426969196823577435430239:59:45.0.

4355614296588012332320184598022133336800 yard dash—1. Honneger (F). Time—225968770020853938393647154870860479:59:45.0.

8711228593176024664640369196044266673600 yard dash—1. Honneger (F). Time—451937540041707876787294309741720959:59:45.0.

17422457186352049329280738392089333347200 yard dash—1. Honneger (F). Time—9038750800834157535744886194834419119:59:45.0.

34844914372704098658561476784178666694400 yard dash—1. Honneger (F). Time—1807750160166831507148977338966883839:59:45.0.

69689828745408197317122953568357333388800 yard dash—1. Honneger (F). Time—3615500320333663014297954677933767679:59:45.0.

139379657490816394634245917136714666777600 yard dash—1. Honneger (F). Time—7231000640667326028595909355867535359:59:45.0.

278759314981632789268491834273429333555200 yard dash—1. Honneger (F). Time—14462001281334652057191818711735070719:59:45.0.

557518629963265578536983668546858667110400 yard dash—1. Honneger (F). Time—28924002562669304114383637423470141439:59:45.0.

1115037259926531157073967337093717322220800 yard dash—1. Honneger (F). Time—57848005125338608228767274846940282879:59:45.0.

2230074519853062314147834674187434644441600 yard dash—1. Honneger (F). Time—115696010250677216457534549693880565759:59:45.0.

4460149039706124628295669348374869288883200 yard dash—1. Honneger (F). Time—231392020501354432915069099387761131519:59:45.0.

8920298079412249256591338696749738577766400 yard dash—1. Honneger (F). Time—462784041002708865830138198775522263039:59:45.0.

17840596158824498513182677393499477155552800 yard dash—1. Honneger (F). Time—925568082005417731660276397551044526079:59:45.0.

35681192317648997026365354786998943111105600 yard dash—1. Honneger (F). Time—1851136164010835463320552795102089052159:59:45.0.

71362384635297994052730709573997886222211200 yard dash—1. Honneger (F). Time—370227232802167092664110559020417810439:59:45.0.

142724769270595980105461419147997772444422400 yard dash—1. Honneger (F). Time—740454465604334185328221118040835620879:59:45.0.

285449538541191960210922838295995544888844800 yard dash—1. Honneger (F). Time—1480908931208668370656442236081671241759:59:45.0.

570899077082383920421845676591991089777689600 yard dash—1. Honneger (F). Time—2961817862417336741312884472163342483519:59:45.0.

1141798154164767840843691353183982179555379200 yard dash—1. Honneger (F). Time—5923635724834673482625768944326684967039:59:45.0.

2283596308329535681687382706367964359110758400 yard dash—1. Honneger (F). Time—11847271449669346965251537888653369934079:59:45.0.

4567192616659071363374765412735928718221116800 yard dash—1. Honneger (F). Time—23694542899338693930503075777306739868159:59:45.0.

9134385233318142726749530825471857436442233600 yard dash—1. Honneger (F). Time—47389085798677387861006151554613479736319:59:45.0.

18268770466636285453499061651093714728884467200 yard dash—1. Honneger (F). Time—94778171597354775722012303109226958672639:59:45.0.

3653754093327257090699813302218743457776934400 yard dash—1. Honneger











## Business News Changeable As April Weather

By SAM DAWSON  
NEW YORK (AP) — Business news this week is as changeable as the April weather.

You can be a pessimist or an optimist depending on which item you choose to give the more weight. Or you can balance them and wait and see.

The stock market continues to have its sinking spells—and recoveries—as traders react to the sweet or the sour in the day's news.

That many think the market is in for further declines is shown by the rise in the short position for the second straight month. It now totals 3,165,338, the highest number of shares sold short since last November.

A trader goes short when he sells borrowed stocks. He expects the price to fall so that he can replace them at a lower cost, and thus pocket a profit.

BUT A HIGH volume of short sales can help the market, too. It means that when prices fall those who sold short sooner or later will buy to repay their loans. This guarantees a market, or a cushion to the fall.

The mixed character of corporate business these days is being reduced to figures as the earnings reports for the first three months flow in. Record profits by some companies contrast with declining net income of others.

Scattered through the reports are a growing number of those who operated at a loss in the first three months of what was acclaimed as the dawn of the Golden Sixties.

But dividend payment totals continue to rise. In the first three months they ran 7 per cent ahead of the first quarter of 1959. In some cases the gains were from increased dividend rates. In others the increase came from paying the same rate on more shares outstanding.

The faltering in some lines of business after a brisk start couldn't stop the Gross National Product from rising to a record high. This is the dollar volume of all goods and services in the nation.

BUT EVEN the record of 498 billion dollars, on a seasonally adjusted annual rate, shows some scars of the slowdown in business. The prediction before the slowdown was that the GNP would be even closer to the half-trillion mark.

Biggest factor in boosting the total to a new high was the build-up of inventories at an annual rate of nine billion dollars, a pace that was noticeably slackening in the final weeks of the quarter.

State and local governments did their bit by boosting their spending by 1 1/4 billion dollars at an annual rate. That old economic standby, the consumer, increased his outlays by 3 1/4 billion dollars at an annual rate.

The consumer managed this although the annual rate of total

## PTA Of Unit 2 Holds Installation Monday, Gilman

GILMAN (JNS)—Donald Wilken was installed as president of the Gilman - Danforth - LaFigue Unit 2 Parent Teacher Association in the high school here on Monday evening.

Charles H. Smith was installed as vice president; Mrs. Clarence Merkle, secretary, and Mrs. Roy Seiling, treasurer. Mrs. Ray Sweeney was installing officer and presented the past president's pin to Mrs. E. S. Herron, retiring president.

Members of the student council discussed questions about high school activities. They also assisted eighth grade students as they followed their freshman schedules in five-minute classes.

James Davis, superintendent of schools, introduced members of the board of education.

The 18 members of the Danforth eighth grade and their parents were presented by Shirley Wolfe, principal. Robert Wall, principal of the Gilman Grade School, introduced the 35 members of the eighth grade class in Gilman and their parents.

The Rev. James Pusey, pastor of the First Methodist Church, gave the invocation. The color guard, composed of Danforth eighth grade boys, presented the colors. Charles Lundsberg, organizer and director of the group, expressed appreciation to parents for helping sponsor this guard.

Mrs. Glen Baxter directed the musical portion of the program. Grade school faculty members and room representatives assisted with registration.

This was the last regular meeting of the unit for the present school year. The next meeting of the executive committee will be held at the high school cafeteria on May 2.

## Name Candidates For Homecoming Queen, Braidwood

BRAIDWOOD (JNS) — The names of the girls selected to be candidates for queen of the 1960 Braidwood Homecoming have been announced.

These girls names will appear on a ballot ticket. The purchaser will be entitled to vote for one of his favorite candidates.

All voting results will be kept secret until the night of the crowning when the top three candidates will be announced. Last year's winner was Alice Faye Foreman.

Listed alphabetically, the candidates are Rosa Lee Bohac, Stasia Chinski, Diane Crater, Linnea Hudziak, Bonita Lard, Linda Miller, Linda McCreery and Betty Jo Nahas.

personal income increased by less than 1 1/2 billion dollars during the period. Payroll totals were down, reflecting rising unemployment and shorter work weeks.

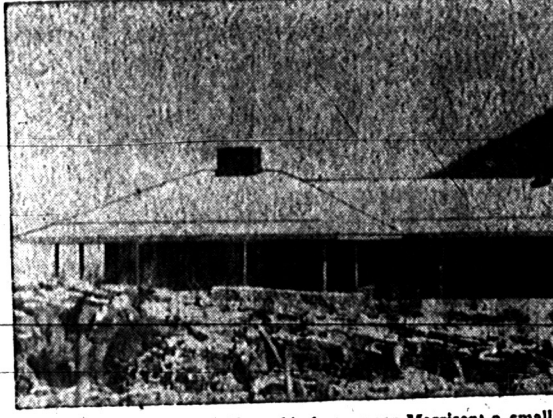
Individual industries also have their optimistic and pessimistic news to report. Automakers note that better weather has meant greater new car sales, but with dealers' stocks still high.

## Where Is Adolph Coors?

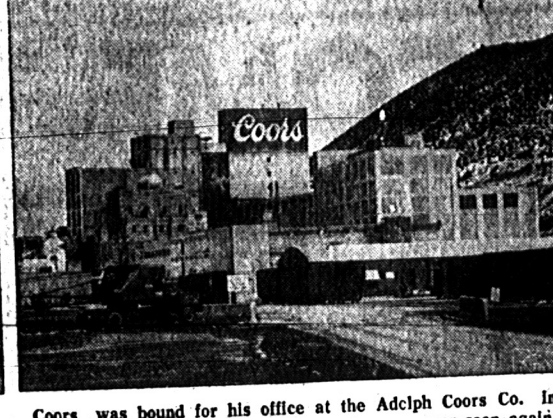
A killer with a near-genius IQ, recently added to the FBI's "Ten Most Wanted" list, may be the only person who knows the whereabouts of millionaire brewer Adolph Coors III, 44. He is Joseph Corbett Jr., an escaped convict who lived in Denver, Colo., for five years, using the name of Osborne. The facts linking Corbett to Coors have piled up. Corbett was known to have hunted in the area where Coors disappeared. His car — a 1951 convertible later discovered burned in Atlantic City, N. J. — was seen near Coors' home. Finally, Corbett hurriedly checked out of a furnished Denver apartment Feb. 10, the day after Coors' blood-stained station wagon was found abandoned on a wooden bridge spanning Turkey Creek. Police aren't sure what happened to the publicity-shy Coors but they think Corbett could supply a lot of information—if he is found.



On Feb. 10, 1960, millionaire Adolph Coors III disappeared.



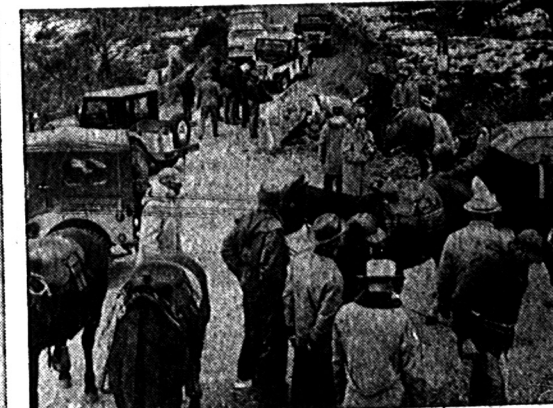
We said goodbye to his wife at his home near Morrison, a small community 15 miles west and slightly south of Denver, Colo.



Coors was bound for his office at the Adolph Coors Co. in Golden, Colo., 9 1/2 miles to the north. He was never seen again.



Sheriff Art Wermuth of Jefferson County investigated case.



Mounted patrolmen and the FBI carefully examined the Turkey Creek area where Coors' car, eyeglasses, cap were found.



Upholstery in Coors' truck-type station wagon was bloodstained.

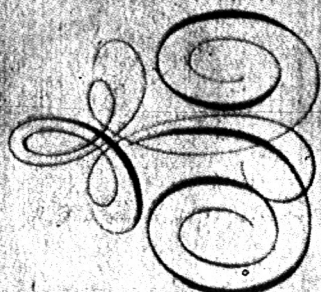


Prime suspect is escaped murderer Joseph Corbett Jr., 31.

HERE TO TAKE OVER THE TOWN...

WESTERN

CARAMEL ALMOND



Sealtest  
ICE CREAM

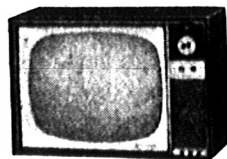


TUNE IN  
"BAT MASTERSON"  
STARRING  
GENE BARRY

a delicious brand new  
Sealtest Ice Cream with that  
friendly Western touch.  
Laced with creamy caramel  
and loaded with plump,  
toasted almonds. It's bound  
to be an all-time favorite.  
Try some, pardner,  
You'll see for yourself!

GUISS FURNITURE IS OPEN EVENINGS

TELEVISION  
RCA VICTOR  
21-Inch Table Model

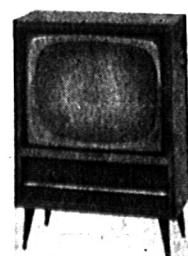


262 SQUARE INCH  
PICTURE TUBE

ONLY

\$199

\$5 DOWN — \$10 PER MONTH



21 INCH  
CONSOLE

262 SQUARE INCH  
PICTURE TUBE

\$249<sup>95</sup>

\$5.00 DOWN — \$10.00 MONTHLY

LIBERAL ALLOWANCE FOR  
YOUR OLD TELEVISION

GUISS FURNITURE  
*of Bradley*