

Olivet Nazarene University

Digital Commons @ Olivet

Aurora-yearbook

University Archives

1-1-1947

Aurora Volume 34

Paul Hubartt (Editor)

Olivet Nazarene University

Follow this and additional works at: https://digitalcommons.olivet.edu/arch_yrbks



Part of the [Graphic Communications Commons](#), [Higher Education Commons](#), [Photography Commons](#), and the [Social and Cultural Anthropology Commons](#)

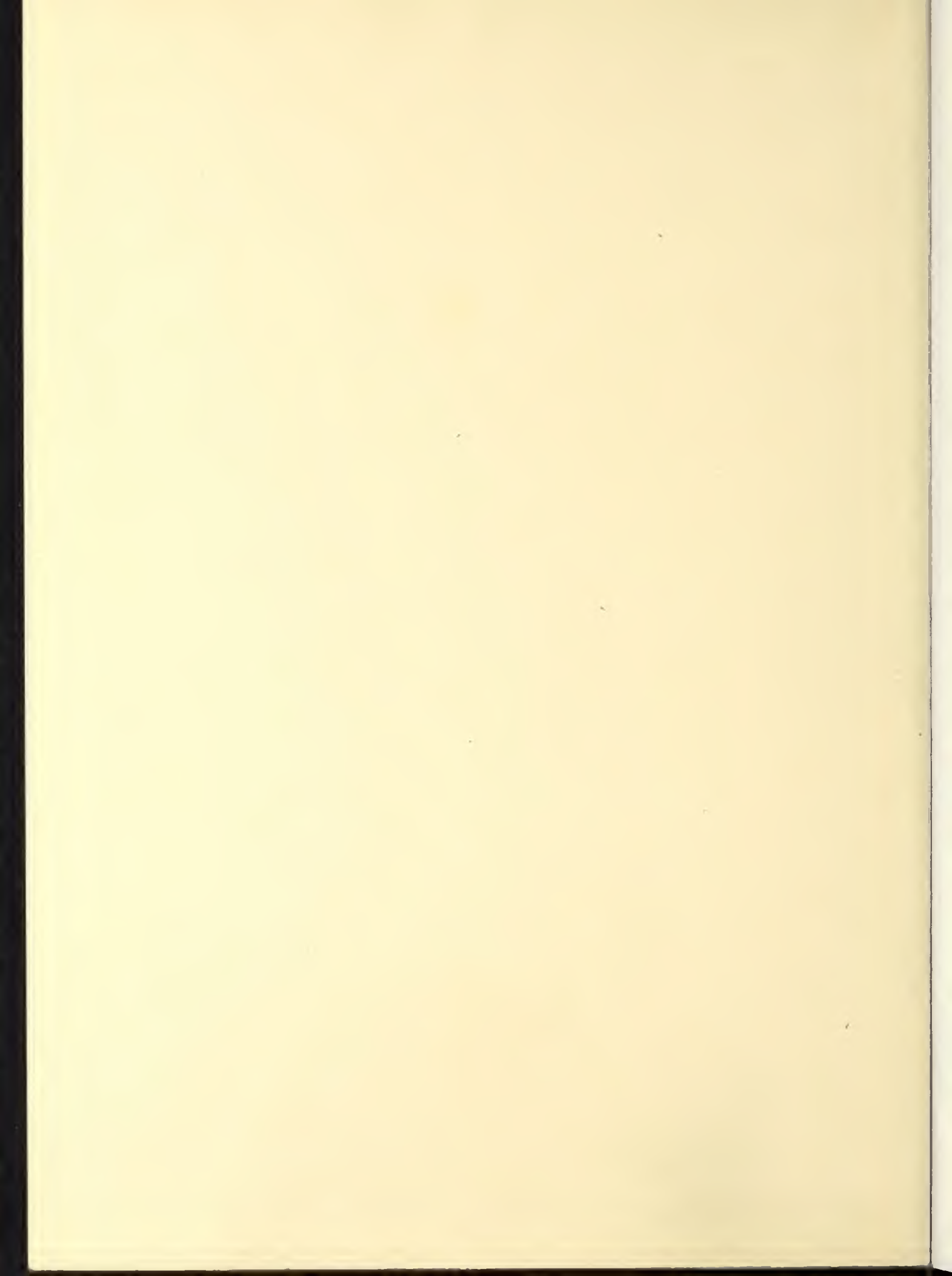
Recommended Citation

Hubartt, Paul (Editor), "Aurora Volume 34" (1947). *Aurora-yearbook*. 34.
https://digitalcommons.olivet.edu/arch_yrbks/34

This Book is brought to you for free and open access by the University Archives at Digital Commons @ Olivet. It has been accepted for inclusion in Aurora-yearbook by an authorized administrator of Digital Commons @ Olivet. For more information, please contact digitalcommons@olivet.edu.



Robert W. Harska.





CONTENTS

- I *They Helped Us Build*
- II *Intellectually*
- III *Socially*
- IV *Spiritually*
- V *Physically*
- VI *Commercially*




Paul **HUBARTT** & *Chuck* **OSWALT**
—EDITOR - IN - CHIEF— —BUSINESS MANAGER—



Olivet has produced many men and women whose careers have successfully served in the propagation of our religious beliefs and our educational standards. Although these careers have been widely varied, they all represent one dominant theme—that of building.

The days that we, the present student body, have spent in these classrooms, and upon this campus, have also been used in building. Those days of training have come to an end for some of our number, but our building is not completed with graduation from college; only the foundation has been laid. When we consider the immensity of the task that lies ahead, we begin to realize our indebtedness to Godly instructors genuinely interested in our building a suitable dwelling for the one who wrought the whole design—"Jesus Christ himself being the chief corner stone."

May the memories of the activities recorded in this volume be as rich as were the experiences themselves.



Instructors
In the art of building
To the fine design
Of life's great architect
Our kindly helpers were
In classroom and at play.
A chapel for the soul
They helped us build,
A place of prayer and praise,
And for the mind
A stately foyer make,
Where Plato, Shakespeare,
Bach, and Lincoln
Each his place assumes.
A "nook" for lighter moods
We builded there.
And for this all
Our earthen house
They helped us to prepare
That He may find
Fit dwelling there,
Who wrought the whole design.

- Wayne Cooper

Dedication

To those Olivet students who served in World War II, whose valor and achievements serve as blue-prints for the loyalty of American youth—of Christian youth; to those who have made possible the maintenance of this, a Christian nation, and even an Olivet, by their noble sacrifices—we reverently dedicate this 1947

AURORA.



Greetings From the President:

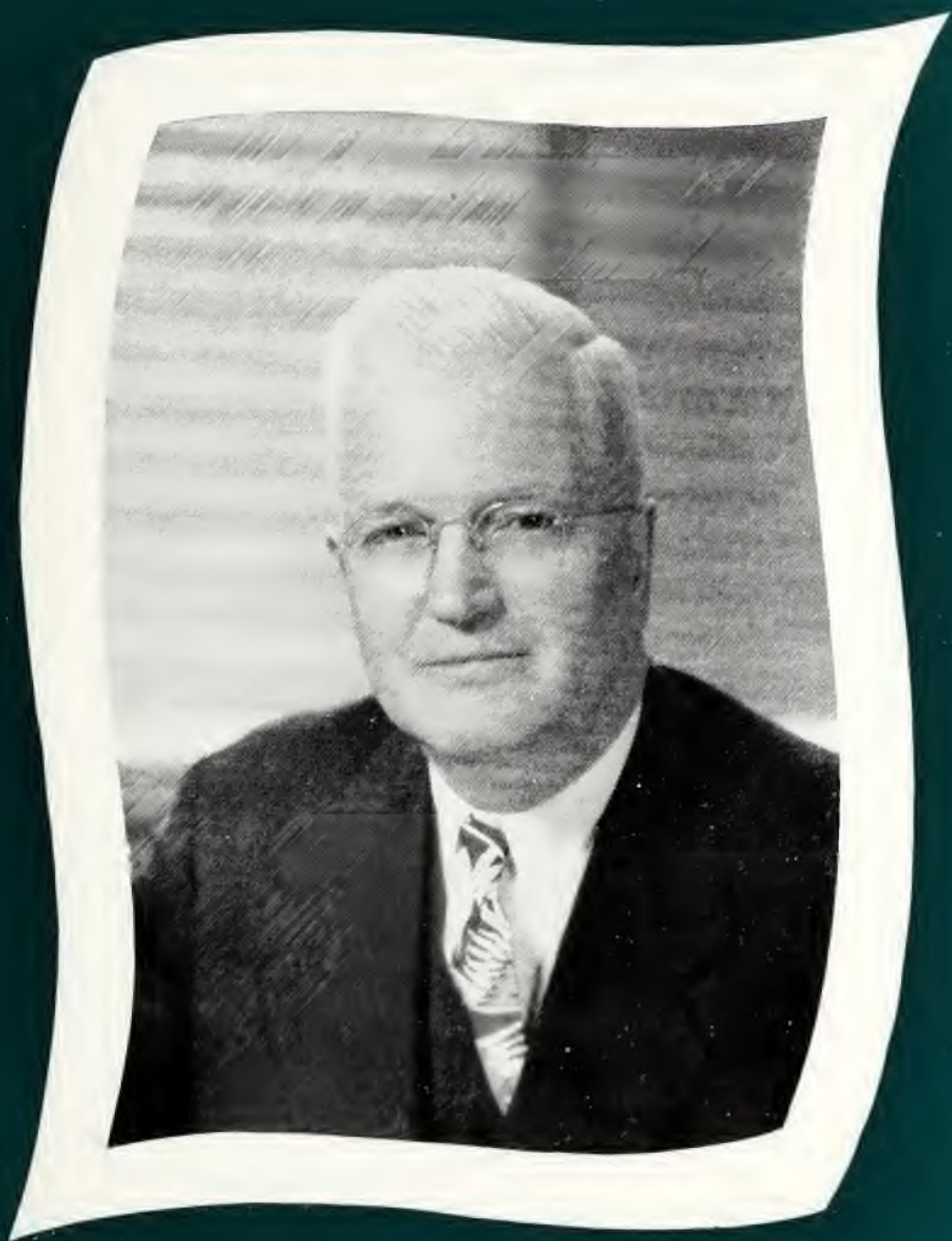
God created this planet for you, but honored you in assigning you the task of creating your own personal world.

You have much material to select from. The good or the bad you select to place in your personality depends upon your evaluation and taste for either the beautiful or ugly in the great array of materials on every hand. Your eyes and ears should select the best in quality for the architectural layout of your life. Thoughtful, prayerful elimination of items of inferior quality will leave only good materials. Thus he who learned to select the highest quality yesterday will know it again today and use it in erecting the house in which he lives, from which will emanate sunshine to others.

A gracious Providence gave you an abundance of the best material. You may use it without cost and build as you will. To select is inevitable. Pray God He will give you eyes with which to see the best, and a pure, wise mind with which to select.

Sincerely,

A handwritten signature in cursive script, reading "George Van Duzee". The signature is written in dark ink and is positioned below the word "Sincerely,".













THE WHITE HOUSE

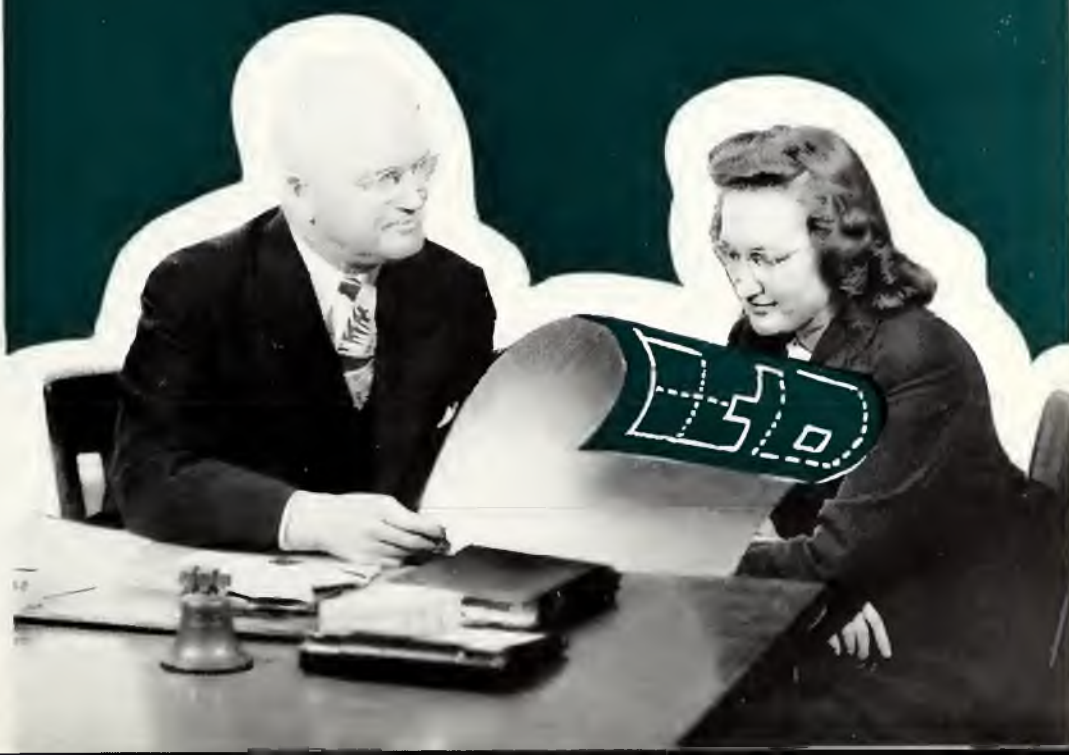


GOODWIN HALL





They
helped
us build





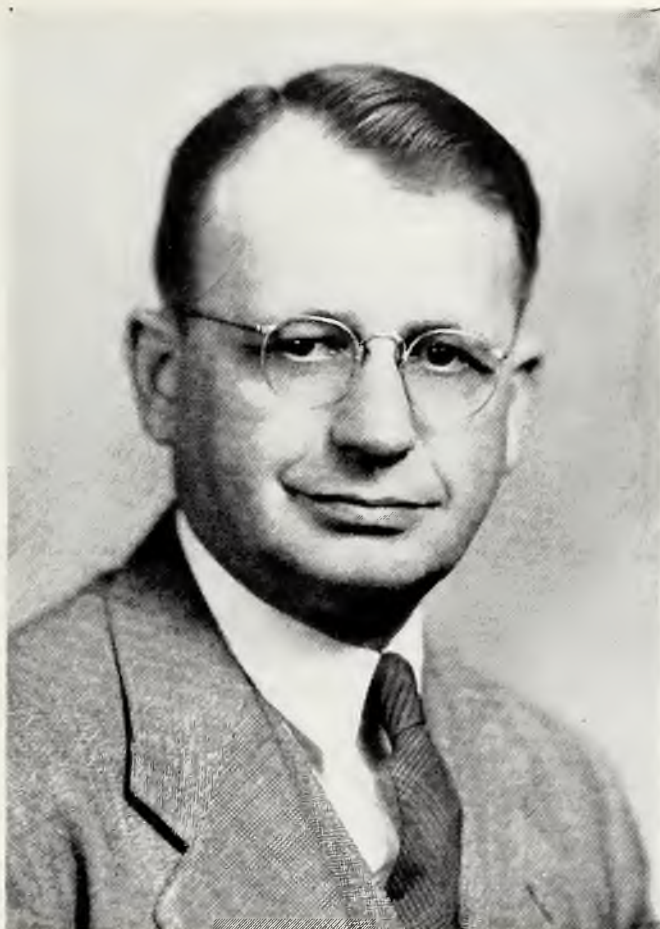
ROBERT GROVER VAN DUYN,
M.A., LL.D.

President

WAYNE DONSON, M.Th.

Treasurer





C. S. McCLAIN, M.A.
*Dean of the College of Arts and Sciences
English*



LINFORD A. MARQUART, M.A.
*Registrar
History*



HAROLD M. D'ARCY, M.S.
Chemistry



NAOMI R. LARSEN, Mus.M.
*Associate Dean of the
School of Music
Voice, Piano, Theory*



WALTER BURDICK LARSEN,
Mus. M.
*Dean of the School of Music
Theory and Choral Music*



JAMES R. GARNER, Ph.D.
Political Science



LLOYD G. MITTEN, Ph.D.
*Business Administration
and Economics*



CORAL E. DEMARAY, Ph.D.
*Classical Language
Biblical Literature*



LEONARD GOODWIN, M.A.
*French, German,
Spanish*



RUTH BUMP, A.B.
English



DWIGHT J. STRICKLER,
M.S.
Biological Sciences



RUTH E. GILLEY, M.A.
Librarian



ELIZABETH MILLER, A.B.
English



WILLIAM DAVID RICE,
M.A.
*Mathematics,
Physics*



R. L. LUNSFORD, M.A.
Theology, Bible



PERCIVAL WESCHE, M.A.
D.B.
Theology



RONALD D. JONES, Ph.D.
*Education
and Physical Education*



KATHRYN RUTH HOWE,
M.A.
Education



BLANCHE I. GARNER
M.Mus. Ed.
Music Education



THOMAS S. GREER, A.B.
Emeritus



THELMA PITTS, R.N., A.B.
Dean of Women



LOUISE MCKINLEY, M.A.
Speech



NELLIE HARDIN, M.A.
French, Spanish



BERNICE TAYLOR, Mus.M.
Theory, Piano



GERALD GREENLEE, B.Mus.
Voice



ELLA LEONA GALE,
A.A.G.O.
Organ



DONALD P. HUSTAD,
Mus.M.

*Music Literature
and History*



BLANCHE BOWMAN,
B.S. M.S.

English



EUNICE SPRUCE McCLAIN,
A.B.

High School English



KATHRYN ZOOK, B.Mus.

Voice



DOROTHY CAIN BUSS

Violin, Chamber Music



ESTHER B. SNYDER, B.Mus.

Piano



GEORGE A. SNYDER,
Th.B., B.Mus.
Voice, Radio



OAKLEY V. ETHINGTON,
B.S. in Ed.
*Dean of Men,
Voice*



ELSIE STULL, A.B., B.Mus.
Piano



DARLENE CHRISTIANSEN,
A.B.
High School Science



ROSELEEN OSWALT
A.B., B.S. in Bus. Ad.
*Assistant in Business
Administration*



LOIS GRAY, B.Mus.
Voice



PHYLLIS JUNE STARR,
A.B.

*Physical Education,
High School History*



BERTHA WOOD, A.B.

German



WANDA LEWIS DONSON,
M.Th.

*Bible School,
Theology, Bible*



F. O. PARR, M.S.
High School History



JOHN T. CHAPPEL, Ph.D.
Science

FACULTY NOT PICTURED

J. RUSSELL GARDNER,
M.A., D.D.

*Dean of the School of Religion,
Theology, Philosophy*

BERNIE SMITH
Assistant in Radio

HARVEY N. HUMBLE, M.A.
History



ED BRODIEN



LOYD HAZZARD

Olivet's stepped-up program has heaped many extra duties upon the shoulders of our efficient engineer, Ed Brodien. By means of his technical knowledge and experience, "Ed" has proved himself a most important cog in the progressive machinery of a growing Olivet.

In spite of the many difficulties in obtaining and preparing food for hundreds of healthy appetites during the past year, Chef Wellman, and his wife, who makes the best biscuits in the country, have done a grand job of keeping Olivet personnel well-fed.



BOARD OF TRUSTEES



DR. C. A. GIBSON
Chairman

Dr. Gibson is now serving his third year as chairman of the Board of Trustees. He is a wise leader and a strong advocate of the Nazarene doctrine as established by our forefathers. He is one hundred per cent behind Olivet.

The true greatness of Olivet Nazarene College lies in the broad scope of the foresight of the entire Board, and our steady progress is a result of the vision and prayerful guidance of these, our faithful leaders.

BOARD OF TRUSTEES

CENTRAL OHIO DISTRICT

Harvey S. Galloway, D.S.
A. H. Perry
H. B. Anthony
W. E. Zimmerman
H. C. Litle
Roy F. Stevens

CHICAGO CENTRAL DISTRICT

E. O. Chalfant, D.S.
M. K. Millikan
Ross E. Price
George Garvin
C. I. DeBoard

ILLINOIS DISTRICT

R. V. Starr, D.S.
G. H. Harmon
J. R. Erp
J. Y. Jones
H. B. Jensen

INDIANAPOLIS DISTRICT

Gene E. Phillips D.S.
M. J. Jones
Harry Carter
Joseph Collins
Jesse Towns
Floyd E. Cole
C. B. Cox

IOWA DISTRICT

R. R. Rehfeldt, D.S.
Mark F. Smith
Harvey C. Miller
W. S. Purinton

MICHIGAN DISTRICT

W. M. McGuire, D.S.
W. W. Clay
Herbert W. Thomas
Selden Dee Kelley
R. L. Major
A. H. Kauffman
Frank H. Watkin

MISSOURI DISTRICT

Holland London, D.S.
A. L. Roach
F. A. Welsh

NORTHEASTERN INDIANA DISTRICT

Paul Updike, D.S.
N. B. Herrell
J. B. Miller
I. F. Younger
Fred Hawk
E. B. Hartley

NORTHWEST INDIANA DISTRICT

George J. Franklin, D.S.
L. E. Myers
H. W. Cornelius
H. B. Garvin

WESTERN OHIO DISTRICT

W. E. Albea, D.S.
J. E. Davidson
Charles L. Henderson
M. R. Fitch
L. P. Rossman
Paul G. Bassett

WISCONSIN DISTRICT

Chas. A. Gibson, D.S.
Kenneth Horner

ALUMNI

Hugh C. Benner

GROVER VAN DUYN



Intellectually





Seniors



1



Carol Tooley



Kenneth Bryant

9



Norman Anderson



Virginia Harskman



Lyndon Walls



James Honaker

4



Beverly Keesler



Imogene Raab



Edna Lockner



Dale Fruehling



Thomas Phillips



Dorothy Mae Seitz

7

1



Emmabelle Botner



Ruth Buckloh



Dorothy McClellan



Paul Baker



Virginia Deale

9

4



Vivian Clingan



Wanda Fulmer



Wayne Welton



Catherine Hill



Ruth Bergin



Clare St. John

7

1



Reuhama Markins



Paul McCoy

9



Harry Grimshaw



John Davidson



Irene Clerico



Katherine Kitt

4



Raymond Coy



Mary Habbegger



Ruth Jones



Velma DeBoard



Charles Leppert



Barbara Wind

7

1



Esther Asmussen Nellie Hoots



Darl Swisher Ruth Wilfong



Lois Starr Carl Clendenen

9

4



William Bennett Mary Collins



Corinne Kauffman Raymond Gardner



James Weeks Helen Basham

7

'4



7

Wayne Cooper Naomi Mains



Lawrence Dennis Kathryn Meadows



Francis Welch Mildred Kinsey

SENIOR ACTIVITIES

ANDERSON, NORMAN E.

ASMUSSEN, ESTHER LOULLA

Spartan 1, 2, 3, 4; Spartan Girl's Coach 3; F. T. A. 4; Olivet Science Club 4; "O" Club 3, 4; Christian Workers Band 1, 2.

AXTELL, CATHERINE HILL

Treble Clef Choir 1, 2; Spartan; Secretary, Big Little Sister Club 2; Sec. and Treasurer Commerce Club 2; Dixie Club 2; President, Commerce Club 3; Vice-President, Junior Class 3; Practice Teaching—Typing 4; Commerce Club 2, 3, 4.

BASHAM, HELEN BOLANDER

Library Staff 1; Band 1, 2, 3; Treble Clef Choir 1, 2; Orpheus Choir 3, 4; Christian Workers Band 1, 2, 3, 4; Assistant Voice Teacher 4; Linguistic Society 3; Sunday Evening and Morning Choirs 2, 3.

BENNETT, WILLIAM R.

Aurora Assistant Business Manager 2; Chi Sigma Rho 1, 2, 3; Christian Workers Band 1, 2, 3, 4; Vice-President Christian Workers Band 3; Debate Team 4; English Guild 3, 4; Forensic Society 3, 4; Ministerial Fellowship 4; Monitor, Men's Dorm 2, 3; Ohio Club 2, 3; Olivet Linguistic Society 2, 3; Platonian Philosophical Society 3, 4; Secretary-Treasurer Platonian Philosophical Society 4; Secretary to Dean of the College 1, 2, 3, 4; Trojan.

BERGIN, RUTH ALBRIGHT

F. T. A. 4; International Relations Club 3; Recording Secretary 4; I. R. C. Representative to Midwest Conference 3; Trojan Softball 3, 4; Basketball 3, 4; Class Basketball 3; Chairman of Decoration Committee, Junior-Senior Banquet 3.

BOTNER, EMMABELLE

Treble Clef Choir 1, 2; Big Little Sister Club 2, 3; Commerce Club 2, 3, 4; F. T. A. 3, 4; Secretary Junior Class 3; General Office 1, 2, 3, 4; Practice Teacher 4; Spartan.

BRYANT, E. KENNETH

Trojan Society 1, 2, 3, 4; Viking Choir 2, 3, 4; Platonian Philosophical Society 3, 4; Iowa Club 1, 2, 3, 4; Apollo Choir 4; W. O. N. C. Staff-engineer 4; Christian Fellowship 4; Christian Service 2, 3, 4.

BUCKLOH, RUTH

Called Missionary Band 3; Library Staff; F. T. A. 4.

CLENDENEN, CARL BURTON

Softball 1, 2, 3, 4; Baseball 1, 2, 3, 4; Basketball 1, 2, 3, 4; Indian; Vice-President Sophomore Class 2; "O" Club 2, 3, 4; President "O" Club 3; Student Council 3; Indian Coach 3; Aurora Sports Editor 3, 4; Orpheus Choir 3; Orpheus Quartet 3; Vice-President Senior Class 4; Viking Choir 4.

CLERICO, IRENE T.

International Relations Club 1, 2, 3; Secretary and Treasurer International Relations Club 3; Platonian Philosophical Society 2, 3, 4; Chi Sigma Rho 1, 2, 3; Forensic 2, 3, 4; Secretary and Treasurer 3; Glimmerglass Staff 1, 2, 3, 4; Circulation Editor 3, 4; Library Staff 2, 3, 4; Olivet Linguistic Society 2; "O" Club 3, 4; Church School Staff 3, 4.

CLINGAN, VIVIAN GERALDINE

F. T. A. 3, 4; International Relations Club 4; Trojan.

COLLINS, MARY ELIZABETH

Orpheus 3, 4; Treble Clef 3; Violin Ensemble 3, 4; Orchestra 4; Debate 4; Transfer from Mississippi Southern College.

COOPER, WAYNE

Forensic Society 1; Associate Business Manager of Aurora 1; Called Missionary Band 1; International Relations Club 2; Treasurer Men's "O" Club 3; President Men's "O" Club 4; Treasurer of International Relations Club 4.

DAVIDSON, JOHN R.

Indian Society 1, 2, 3, 4; Society Basketball 1, 2; International Relations Club 3, 4; Platonian Philosophical Club 4; Student Ministerial Fellowship 4.

DE BOARD, VELMA IRENE

String Ensemble 1; Treble Clef Accompanist 1; Alpha Tau Delta 2, 3; Student Teacher 3; Fine Arts Representative to Aurora 3; Radio Accompanist 3; F. T. A. 4; Junior-Senior Banquet Committee 3; Spartan.

FULMER, WANDA MAE

Transfer from Asbury College; Modern Language Club 2; International Relations Club 2; College Band 2, 3, 4; Future Teachers 4; Treble Clef Choir 2, 3, 4; Accompanist Treble Clef Choir 2, 3; Honor Society 2, 3, 4; Student Piano Instructor 3, 4; Organist St. Paul's Episcopal Church 3, 4.

GARDNER, RAYMOND

Platonian Philosophical Society 4; All-School Softball 1, 2, 3, 4; All-School Baseball 4; "O" Club 2, 3, 4; Ministerial Association 4; "O" Club Vice-President 3; "O" Club Secretary-Treasurer 4; Spartan Athletic Coach 3.

HABBEGER, MARY E.

Forensic Society 4; Olivet Science Club 4; Trojan; International Relations Club 3; Sunday School Worker.

HARSHMAN, VIRGINIA ANN

F. T. A. 3, 4; Vice-President F. T. A. 4; Honor Society 2, 3, 4; Olivet Linguistic Club 2; Phi Delta Lambda 4; Platonian Philosophical Society 3; International Relations Club 3, 4; Assistant Librarian 1, 2; Secretary in Registrar's Office 3, 4; Who's Who 3, 4.

HONAKER, JAMES LUTHER

Class Vice-President 2; Midget's Club Treasurer 2; Chi Sigma Rho 2, 3; Indian Club 1, 2; Called Missionary Band 2, 3, 4; President, Called Missionary Band 3; Christian Worker's Band 1, 2, 3, 4; Platonian Philosophical Society 3; Class President 3; Radio Religious Director 3; Spartan.

SENIOR ACTIVITIES

- HOOTS, NELLIE RUTH
Bear Brand Club 1; Commerce Club 2, 3, 4; Honor Society 2, 3; Indian.
- JONES, RUTH F.
Linguistic Club 3; Platonian Philosophical Club 4; English Guild 3, 4; Custodian of Literature of English Guild 4; F. T. A. 3, 4; Secretary F. T. A. 3, 4; Teacher of French 4.
- KAUFFMAN, CORINNE
"O" Club 2, 3, 4; All Star 2; Trojan Women's Coach 3; Platonian Philosophical Society 3, 4; Forensic Society 3, 4; President Forensic Society 4; Linguistic Society 2, 3; President Linguistic Society 3; English Guild 3, 4.
- KINSEY, MILDRED WILDE
Library Staff 1, 2, 3, 4; Forensic Society 1, 2, 3, 4; F. T. A. 3; Spartan.
- KITT, KATHERINE LOUISE
Chi Sigma Rho 2, 3; Forensic Society 3, 4; Spartan Softball 1, 2; Dorm Council 4; Practice Teacher 4; International Relations Club 4; Commerce Club 2; Phi Tau Omega 3, 4; President Phi Tau Omega 4.
- LEPPERT, CHARLES WILLIAM
G. I. Club 3, 4; International Relations Club 3, 4; President International Relations Club 4; Indian.
- LOCHNER, EDNA
Spartan; International Relations Club 2; Chi Sigma Rho 2, 3, 4; F. T. A. 3, 4; Librarian 4.
- MAINS, NAOMI
Indian; Giants Club 3, 4; Linguistic Society 3; English Guild 3, 4; Library Staff 3, 4.
- MARKINS, REUHAMA ELLEN
Indian; Treble Clef Choir 1; Linguistic Society 3; English Guild 3, 4; F. T. A. 3, 4.
- MCCELLAN, DOROTHY LOIS
Called Missionary Band 1, 2, 3, 4; Spartan; F. T. A. 4; Linguistic Society 4.
- MEADOWS, KATHRYN WOOD
- PHILLIPS, THOMAS EDWARD
Platonian Philosophical Society 3, 4; Ministerial Fellowship 4; Phi Delta Lambda 4.
- RAAB, RUBY IMOGENE
Who's Who 4; Alpha Tau Delta 2, 3, 4; Platonian Philosophical Society 3, 4; Corresponding Secretary 4; Ministerial Fellowship 4; Varsity Debate 4; Daughters of Martha Ann Wines 1, 2, 3, 4; Linguistic Club 1, 2; Christian Workers Band 2, 3, 4.
- ST. JOHN, CLARE DUANE
President Sophomore class 2; President Called Missionary Band 4; Indian.
- SEITZ, DOROTHY MAE
Transfer from Harris Teachers College, St. Louis, Mo.; Treble Clef Choir 2; Phi Tau Omega 3, 4; Linguistic Society 3; Indian Softball 3; Practice Teacher 4; International Relations Club 4; Apollo Choir 4.
- SWISHER, DARL VERNON
Platonian Philosophical Society 4; Ministerial Fellowship 4.
- TOOLEY, CAROL EVANGELINE
Trojan; Daughters of Martha Ann Wines 2, 3, 4; Treasurer 4; F. T. A. 3, 4.
- WALLS, LYNDON ALBERT
Student Pastor 2; Ministerial Fellowship 4.
- WEEKS, JAMES A.
Orpheus Choir 1, 2, 3; Business Manager 3; President Commerce Club 2; Student Council Representative 2, 3; Assistant Business Manager Aurora 3; Honor Society 1, 2, 3, 4; Student Pastor 2, 3, 4; Platonian Philosophical Society 3, 4; President 4; Who's Who 3, 4; Spartan Basketball 2, 3; Spartan Softball 2, 3; Phi Delta Lambda.
- WELCH, FRANCES WEAVER
Indian; Alpha Tau Delta 2, 3, 4, 5, 6; Treble Clef Choir 2, 3; Daughters of Martha Ann Wines 3, 4, 5, 6; Dayton Trio 3, 4; Sunday Evening Choir 4; Platonian Philosophical Society 5.
- WEILTON, WAYNE E.
Indian; Christian Worker's Band 1, 2, 3, 4; Indiana Club 1, 2; Class Treasurer 1, 3, 4; Assistant Pastor 2; International Relations Club 2, 3; Forensic Society 3; Viking Male Chorus 3; Treasurer 3; Platonian Philosophical Society 3, 4; Vice-President 4; Barracks Monitor 4; Olivet Ministerial Fellowship 4; Michigan Club 4.
- WICKERSHAM, GORDON C.
Christian Worker's Band 1, 2, 3, 4; Ministerial Fellowship 4; Church Choir 1, 2; Spartan; International Relations Club 2; Forensic Society 3; Chi Sigma Rho 1, 2, 3; English Guild 3, 4; Treasurer 4; Olivet Lensmen 1, 2; President 2; Linguistic Society 2, 3; Vice-President 3; Platonian Philosophical Society 3, 4; Historian 4; Glimmerglass 1, 2, 3; Assistant Business Manager 3; Viking Male Chorus 2, 4; Quartet 2; Bookstore 3, 4; Honor Society 2, 3, 4; Phi Delta Lambda 4; Who's Who 4.
- WILLFONG, RUTH LEONA
Trojan; Linguistic Society 4; Platonian Philosophical Society 4; English Guild 3; Ministerial Fellowship 4; Daughters of Martha Ann Wines 3, 4; Honor Society 2, 3, 4.
- WIND, BARBARA JEAN
Forensic Society 3, 4; President 1; Chi Sigma Rho 2, 3, 4; Secretary and Treasurer 2; Vice-President 3; English Guild 2, 3, 4; Vice-President 3; President 4; F. T. A. 3; Indian Girl's Basketball 1, 2, 3; Glimmerglass 1, 2, 3, 4; Girl's Sports Editor 3; Columnist 4; Girl's Dormitory President 4; Varsity Debate 4; Student Teacher 4.

Juniors





Maybelle Ann Nohden

Glen Cecil Park

Mary Snodgrass



Elaine Charlotte Gardner

Wauneta Maxine Gennaro

Frederick Walter Chaney



William Luther Chambers

Florence E. Emahiser

Mozelle A. Overton



Paul Matthew Rodgers

Lois Averil Michels

Paul E. Pepper



Edith Viola Ketterman

Lucy Jennette Stacy

Helen Frances Wilson



Ruth Emma Watson

Virvil V. Nutt

David King



Melvin Leon Wilkinson

Maudie Isabella Huston

Robert Samuel Keys



Marian Frances Ream

Raymond D. Dafoe

Leone M. Horner



Ruth Marie Houghtaling

Earl Lurraine Morgan

Margaret Csolkovits



Hazel Elizabeth Keene

William Isaac Barnes

Jeanne Neoma Hershey

Betty Allen Fruehling

Pauline Hazel Silvernail

Louise Lillian Hunt



Jewell Vivian Flaugher

Winifred Mae Wilson

Wendell H. Arnold



Henry L. Smith

Irene Annetta Gragg

John Steve Clerico



Mary Jean Beck

Mildred Irene Buck

Juana Tomasa Briles



Myron C. Morford

Madonna E. Randolph

Betty Axtell





Jay Harold Keiser
Jean M. Shearer
Paul L. Hubartt



Lois Zackmire
Donita Von Seggen
Pearl I. Gray



Wesley Philson Stoops
Janice Winifred Cobb
Donna Marie Harshman



Pearl Coomer
William Russell York
Bernadine Riddle Leppert



Betty L. Shrider
Hazel A. Coomer
Helen Lucille Heldenbrand

M. Christine Sonju
 Marjorie F. Cooper
 Russell David Bredholt



James Albert Mingus
 Ruth Marie Cailey
 Gregorio Tingson



Beulah A. Perkins
 Mildred June McGuire
 William G. Foote



Zell Selden Nutt
 Madice L. Kettleson
 June Arlene Measell



Doris Irene Ensley
 Jack H. Goodwin
 Clifford L. Bryant





Wilma Lee Leitsch
Charles E. Oswalt
Lois Laura Gibson



Floyd L. Zurcher
Ruth Ellen Moriarity
Jesse Pitts



Donald W. Hough

JUNIORS NOT PICTURED

Christian Adam
Pearl M. Allen
Betty Ball
June Bedell
Sarah B. Davidson
Charles Endsley
Marie Naomi Jackson

Elmer E. McCormick
Faye W. Phillips
Eldon R. Shults
Mary Joan Stentz
Gwendolyn Joyce
Mildred Irene Pauley Wilson

Sophomores





Evabelle Knisely
Martha White
Evelyn Duff



Naomi Atkinson
Lorraine Switzer
Earl L. Frost



Paul Whitteberry
Thelma Wagner
Mary Steinegger



Charles Tompkins
Nadine Skaggs
Marjorie Hughes



Hazel Unger
Virginia Benedict
Orma Manley



Ray Hawkins
Joyce Reeves
Lucille Moon

Eileen Wellman Grimshaw

Pauline Uhrig

Berdella Arlene Tonk



Esther Marie Gale

Elizabeth Archer

John Ingalls



Robert Joseph Clack

Henrietta Marie Worgul

Dorothy Madalyn Ellwanger



Doris E. Bergquist

Betty E. Goodwin

Byron Maurice Hunt



Avis Jay Harshman

Paul James Kendall

Margaret N. Whitehead



Mildred Perdine Sisson

John Raymond Smith

Betty Axtell





Orval Wayne Akers
Dolly M. Shockley
Lyle E. Akers



Betty E. Downs
Paul D. Studebaker
Clemens G. Kruse



Paul Pierson
Mildred F. Grisa
Alva Frye, Jr.



Mary Louise Kelly
Virgil William Borden
Edith F. Servies



C. Clifford Ladman
Evelyn J. Lindberg
Dean V. Stark



Geneva Louise Fullen
H. Richard Lewis
F. David Royal

Esther Eleanor Ferguson
Wayne Schwob
Ruth Wilcox



Robert Hendricks
Gladys Bartram
John Parrott



Ruby Jean Gee
Donald Wayland
Alice Louise Supernois



Joseph F. Neilson
Ida Alberta Stephens
Warren Christian



Clara Irene Jones
Cecil LeRoy Roby
Helen Everett



Chester Frank Pasko
Catherine Lucille Long
Leroy Reedy





Paul Wells

Violet Philbaum

Geraldine Brown

Warren Holcomb

Katherine Somerville

John Strahl

SOPHOMORES NOT PICTURED

Urey Burke Arnold, Jr.

Kenneth Allen Bade

Betty Joyce Barnell

Maxine Geneva Berry

Arlene Iola Beyer

Sylvester Joseph Bird

Jacqueline Bowers

Betty Jean Brown

Russell William Brunt

Betty Marie Cable

Albert Frank Carey

Ernest Leo Chance

Eloise Marie Chilver

Warren M. Christian

Lucille Irene Cole

Dudley Martil Cook

Laura Pearl Coomer

Russell E. Dawson

Harvey Doud

Dorothy Madalyn Elwanger

Lois Jahde Enoch

Victor F. Enoch

Ruth Mae Everett

Robert Fiedler

Kenneth Elver Foust

Grace Freeman

Richard Lee Fullerton

Hanson E. Goin

Bonnie Jane Grabill

Carl Edwin Greek

Ramos Hammer

Anna Margaret Hines

Ted Holstein

Lora Wright Honaker

Mary A. Horton

Robert Edward James

Kenneth N. Jilbert

William C. Keller

Joseph E. Knecht

Orma J. Manley

Ruth McCauley

William Bryan McCann

Betty Jean McCord

Ruth Lenna McGillvary

William Marshall McGuire

Joan Miller

Thomas Morris

Samuel V. Munn

Snowden A. Neill

Joseph Finley Nielson

Minnie Ruth Peacock

Marion Francis Reeves

Mary Ruth Richcreek

Effie Marie Riddle

Harold Lester Ringhiser

Gladys Marie Rose

Eleanor Agnes Rylander

Patricia Joanne Shafer

Newman Howard Sheldon

Naomi Josephine Sindors

Edith Gladke Small

Bernie Smith

Mable Irene Smith

Lorraine Sparks

Gladys Perry St. John

Theodore Sturgeon

Alice Louise Supernois

Robert Edward Taylor

Perry Lee Taylor

Evelyn Louise Treece

Luther Stanley Watson

Pershing Carroll Weaver

Walter Donald Wellman

Francis Willard Widger

Arlene Elizabeth Wilde

June Leona Williams

Marjorie Joyce Williams

Jeanne Berkely Wilson

James Wesley Wind

John Carl Wine

Raymond Morton Young

Dorothy Hope Zachary

Naomi Bearinger

Craig Rhorer Dillman

David Konrad Ehrlin

John Stanley Hand

Opal Irene Lowery

Mary Louise Shaffer

Beverly Kathleen Shroll

Freshmen





Donna Lou Donaldson
Delbert E. Miller
Alice LaVelle Bryant
Robert J. Fulton



Howard Glenn Stroble
Betty C. Chivington
Barbara P. Bedsworth
Mary Elizabeth Logsdon



Melba Joan Hacker
Phylis Hacker Hubartt
Leonard Grant Hubartt
Josephine Ambrosio



Charlene Ruth Zook
Gordon Peterson
Margaret Ann Myers
Thomas Nelson Clendenen



James Douglas Blue
Winnifred Purdy
Harlow E. Koth
Betty Jean Plankael



Pauline May Ummel
Theodore Martin Kerr
Pauline Richey
Jess Schnell



Naomi Elaine Harris
Mary Linda Jeffries
Mildred E. Brainerd
John Bundy

Phyllis Charlotte Kotek
 Wilfred J. Wentworth
 Clyde McKnight
 Bernice A. Jorgensen



William Allen Rice
 Joan M. Nicholson
 Rosalie Jeannette Hoopes
 Vernon Newman



Velma Eileen Johnson
 Dale Howie
 Charles Edwin Hunt
 Wanda Jean Ripperdam



Barbara Orvis
 Thomas Lyle Voyles
 Charlotte Carmony
 Wilma Ostrander



James E. Bauerle
 Naomi Ruth Welsh
 Grace Ellen Metas
 Robert Harsha



Leo Edward Wiseman
 Omer D. Robbins
 Virginia Kolstad
 Meredith Morris



Martha E. Ludwig
 Gilda Rae Sigler
 James William Farris
 Faith Ricker





Laurena Wilson
Murrell L. Duffie
Floyd Webb
Doris Lillian Rowe



Gerald William McElrath
Floyd Bradley
Ruth Chase
George Psaute



Dale Lewis Sievers
Virginia Dawson
Lowell Miller
Roberta Lee Lipp



George Louis Shelton
David Evans
Frances Ann Robbins
Theodore R. Cox



Robert V. Clendenen
Mary Elizabeth Johnson
Violet Irene Culbertson
Twyla Marie Baker



Robert Griffin
Arlene Millspaugh
Allen Riley Marrett
Gerald Edward Jenkins



Dalores Jones
Russell Ray Duley
George Allen Mellish
Vincent Gennero

Ivan L. Smith
 Ruth Engeman
 Juanita Lee Pate
 Don Clifford Gilbert



Phyllis Hendricker
 Evan Ralph Wright
 Laura Ann Wilson
 Marjorie Marion Gray



Virginia Barns
 Neta Jane Jory
 Jean Psaute
 Geraldine E. Lewis



Loren Charles Anderson
 Daryl D. Olsen
 Nora La Jones
 Alfred Daniel Foster



Doris Trotter
 Joy A. Bills
 Paul W. Gamertsfelder
 Mortelle Morgan



Richard William James
 June McCready
 Helen Lee White
 Charles Melvin Scott



Frances Irene West
 Richard Ingalls
 James P. Hieftje
 Wanda Pauline Milner





Mary Jane Leib
Don Robinson
Dorothy Brooks
Gerald Hugh Moore



Dwan Alice Swank
Emmett M. Cody
James William Rogers
June Wilma Colyar



Robert Darrell Dalton
Emogene Alma Bade
Helen I. Geldean
Richard A. Horner



Ernest Ladean Rice
Wanda Low Nenstiel
Garnett Mitchell
Norma Armstrong



Charles W. Hess
Carolyn Reese
Dale R. Baldrige
Dwight Keller



Dalores Regeana Barbee
Walter Braselton
Richard Lefton
Lester Clair Sprang



Roy Williams
Virginia McGough
James Roemer Johnson
Robert Hilton Taylor

Arland Dewey Gould

Mary E. Gunnels

Everett Wayne Clack

Virginia Mae Kraft



Paul B. Hodge

Betty Mae McKay

Veryl Jenkins

Harry Hardin



Helen Juanita Cremeans

Clifford Martin

Irene Whitteberry

Julia Kathryn Dennis



Howard Samuel Martin, Jr.

Margaret Griswold

Norma Louise Sirrine

Paul L. Liddell



Rae Ves Voigne Green

Robena Estella Hubble

Frank Alfred Wood

Bette Mae Garvin



Lillian Thacker

Clarence Griffith

Mickey R. Caudill

James H. Lucas



John David Knighton

Naydine Maxine Nutt

Goldie Watts

Vendetta Collins





James Franklin Early
Ardis Muriell Munger
Margaret Clare Smith
Curtis Savage



Vera Patricia Cox
Linn B. Soule
John Thomas Sapp
Jay Foster



Robert Swanson
James Hatton
Joyce Marie Kauffman
Geneva Vanhook



Betty Jean Cunningham
Monroe Baker
Charles Alstott
Marion Anderson



Forrest Goble
Charles Wayne Perry
Joe David Worley
Robert Rucker



Franklin Allison
Virgil Paul Applegate
Wanda Lee Pelletier
Samuel Edward Ross



Reuben V. Schultz
Ruth Maxine McElvain
Haldor Lee Miller
Eldon Raymond Shultz

Mark Raymond Fiedler
 Ruth Clapp
 Mary Ellen Ebert
 Naomi E. Long



Clara Pester
 Philip Knisely
 Elda Le Johnson
 Ronald Featherston



Esther Jean Eisenmann
 Emeroh Deal
 James A. Conrad, Jr.
 Elsie Mae Ladman



Carolyn June McDonald
 Paul Wendell Gregory
 Audrey June Schramm
 Vivian Ruth Buettner



Wildena Strickland
 Floyd Dene Bruning
 Lloyd Gene Bruning
 Clotine Mabel Rose



Barbara Ellen Schisler
 Melvin Lee Riddle
 Beverly June Engeman
 Paul E. Cable



LeRoy J. Hankins
 Charlotte Attig
 Beryl Dillman
 Leah Ruth Woods





Meredith Miller
 Wilma Jean Cross
 Betty Ruth Cook
 Jerome Lowell Dershem



R. T. Savage
 Jesse O. Briles
 Mary Elizabeth Harshman
 Donald Leroy Parker



Nadine Higgins
 Wilma Lois Von Seggen
 Earl H. Donson
 Carolyn Thero Cobb



Betty A. Burton
 Klarence H. Ehrlin
 Faith Austin
 Betty Bailey



Dean Herman
 Naomi Lewis
 Lewis Allen Piner
 Jeanne Muriel Wilson



Dorothy Eileen Turner
 Herbert Nation
 Charles Curtis Keyes
 Lillian Mary Caperonis



Dwight Paul Millikan
 Joyce Berniece Rarick
 James H. Trimble

Solveig Myrtle Sonju
 Paul Ozie Harvey
 Wilma Berry
 Udell Moss



William Patrick Whalen
 Esther Irene Wilson
 Jean Sigler Wiseman
 John White



Robert Eldon Eigsti
 Ardee Coolidge
 Waltor Dwight Dale
 Laura Forinash



Violet Patterson
 Alma Leona Brock
 Harold Russell Calvin
 Otho Wilson



Clayton Bailey
 Dorothy Baysinger
 Betty June Brown
 John Y. Jones



Betty Lucille Baker
 Louis Taylor
 Charlotte Coomer
 Barbara Ellen Warner



Ellis Chambers
 Martha Jane Rice
 John Mellish
 Leo Dale Baugus





Floyd David Gale, Jr.
Dudley Powers
Helen Marie Owen
Max Fruehling



Carl R. Wicks
Arlea C. Burkley
Jeanette Ellwanger
Benniett Crocker



Clayton Wilson
Noah Benjamin Herrell
Dennis Burris
Roy E. Brinkman



James Warren Walker
Rex Baker
Richard Rowe
Elmer E. Brodien



Marvin Carmony
Charles Willingham
Elmer W. Pannier
Nancy Conrad



James H. Lyons
Melvin Reford Wright
James Layman
Maxine Boyd Kerr



Robert Lee Medcalf
Phyllis Winters
Kenneth Coil
Dean P. Fiedler

Alice Gertrude Hetzer
 Louis E. Shaffer
 Marjory Hughes



Irene J. Schmidt
 Edna Bender Reedy
 Pearl Street



Iva Bernice Tate
 Ronald Axtell
 Helen Jean Ullom



Joyce Barrett
 Gladys Mae Duley
 Albert McFarland



Thelma DeWitt
 Robert Knowles
 Betty Bronson



Mary Ann Stevens
 Floyd Holly
 Virginia Louise Carlson



Katherine Huffman



FRESHMEN NOT PICTURED

Ralph Thurman Albertson
 Fred Martin Asbury
 Walter Attig
 Wilma I. Ayers
 Richard Bade
 Mary R. Baker
 Douglas Karen Ballard
 Verl Wayne Ballmer
 Willard Basham
 Ellsworth Elias Bassett
 Ruth Elizabeth Bauerle
 Bryan Luther Beaty
 Edward M. Bengé
 Mary Craig Benson
 Ivan Mary Bergeron
 Dean Nelson Bourelle
 Helen Louise Bourgeois
 Carter C. Bragg
 Dorothy W. Bruner
 Leslie Dale Brush
 David Earl Buck, Jr.
 Gerald Campbell
 Marion Canhan
 Dorothy Cardosi
 Albert Frank Carey
 Denton Carlton
 Ivan L. Chaffin
 Venetia Louise Chambers
 Erwin F. Chwala
 Paul J. Clipson
 Alberta Berniece Cody
 Paul Cook
 Calvin Herman Coolidge
 Aubrey Emmett
 George Correll
 Walter Cox
 James Coyle
 James Carlton Crabtree
 Elayne Lois Crites
 Leonard Crites
 Wanda Crook
 Evelyn Crose
 Richard Ray Crow
 Ernest R. Crummen
 Dwight Cunningham
 Glenna Joy Curtis
 Doris Dablemont
 Joe Darter
 Royal David
 Darrell Davis
 Grace Davis
 Robert Frank
 Harry Dickerson
 Delmer Doctor
 Estle Doss
 Betty Easley
 Wayne Enfield
 Henry Engbrecht
 John T. Evans

Robert N. Farley
 J. Norman Fawthrop
 Erle H. Ferguson
 Gladys L. Forkel
 Robert Forker
 Donald E. Fox
 Peggy Lou Green Fox
 Grace LaVera Freeman
 Earl Garner
 Betty J. Gennero
 U. B. Godman
 Jay Gould
 Gladys W. Goodall
 Robert Grasser
 Raymond Earl Green
 Donald Edgar Griffith
 Madonna Hoffner
 Mary Haldaman
 Lela Mae Hard
 Dale R. Harvey
 Arthur Hasbargen
 Glenn Hatfield, Jr.
 Spero Helopoulos
 Charles Henderson
 Paul Eugene Henderson
 Marjorie Higgins
 Francis Ray Hill
 Robert P. Hoch
 Ralph Hodge, Jr.
 John Wesley Hodges
 John Holland
 William Franklin Hurt
 William R. Jackson
 Robert G. James
 Velma Eileen Johnson
 Wayne Edward Jones
 William Kanmann
 Mary Louise Kelley
 Rosemary Gwendolyn Keyes
 Theora Kirkpatrick
 Geraldine W. Knighton
 Charles Lain
 Dale Learned
 Jackie Lee
 Sol L. Langman
 Arthur J. LaPorte
 Earle Lott
 James McCaulla
 Robert McClatchey
 Geneva L. McHolland
 James Wesley Malone
 Ruth Elizabeth Meyer
 Joyce Dean Mewbourn
 Thelma Miller
 Marcia Mae Moneymaker
 Patsy Lou Monroe
 Marianne Moore
 Robert Franklin Morris
 Betty June Moss

Lloyd Nelson
 Robert E. Neuman
 Glenn Arthur Nichwander
 B. Maxine Overton
 Robert Earl Pittam
 Clifford Potts
 Lenna Jean Potts
 Garfield Powers
 Hardy John Powers
 Nona Jane Powers
 Harold Prong
 Elvah Rafsnider
 Allen Dale Redman
 H. Norwood Reece
 Grover Reed
 Joyce Reeves
 Carol Replogle
 William Wayne Ridenour
 Henry Thomas Riley
 William Rinebarger
 Moody M. Schoonover
 Hermenia Schultz
 Ruby Rae Seal
 Hazel Seliz
 Elizabeth Jane Seybert
 Mary Louise Shaffer
 Robert Jackson Shanks
 Jean Shearer
 Geneva Irene Sledd
 Howard Small
 Farrell Snow
 Naomi Ruth Snow
 Robert Ervin Sparks
 Doris Maxine Stacy
 Robert Clavin
 Lorraine Strickland
 James P. Sumwalt
 Jeanne Taylor
 Nellie Spates Taylor
 Edith Lorena Tohill
 Robert Clack Ullom
 Paul Ray Ummel
 Ardis George Vance
 David Lee Vangunten
 Richard Vangunten
 Donald Maurice Warford
 William O. Warner
 Byron Warren
 Roy Oatley Watson
 Donald Ray Watts
 Wilfred Wentworth, Jr.
 Paul Whitteberry
 Wilbur Thomas Wilde
 A. Pauline Wilson
 Mildred Wilson
 James Wright
 Orville Truman Wright
 Elmer Zachgo

Special STUDENTS

Evelyn Evans

Leota Ringhiser

Ruth Helen Harris



Marjorie Sparks

Virginia Farmer

Audrey Singer Pasko



Eileen Goss

Ruth Marrett

Carrie Sigler



SPECIAL AND UNCLASSIFIED STUDENTS NOT PICTURED

■ ■ ■

Alison, Percy H.	Hillman, Alice	Smith, Henry James
Attig, Martha	Holt, Grace	Smith, Janice
Berg, Charles	Holland, Eunice D.	Smith, Brodis
Bohne, Wayne	Ivy, Juanita	Smith, Ronald
Bradley, Ruth	Johnson, Roberta Kay	Snow, Ferne
Carrico, Helen	Jones, La Nora	Snyder, Esther
Collings, Pearl	Kempen, Leoneille	Snyder, George
Courtney, Mae	Keys, Lillian Caperonis	Strickler, Lois Joan
Craig, Bessie	Lain, Philip	Strickler, Shirley
Endsley, Elizabeth	Lewis, Warren	Sturgeon, Geneva
Endsley, Patricia	Lund, Lillian	Taylor, Clara
Ethington, Oakley	Lunsford, David	Thiesfeld, Hattie
Fehr, John	McKinley, Louise	Trudeau, Bonnie
Foust, Flora Walker	Miller, Betty	Ulveling, Gwen
Freise, Lucy	Mitten, Donald	Underwood, Shirley
Garner, Blanche	Moon, Erma Lucille	Walter, Lois
Gardner, Sally	Olsen, Herman	Warneche, Genevieve
Gierke, Irene	Pasko, LaMar	Waters, Bernice
Gray, William	Pombert, Margaret	Watson, Juanita Dalton
Griffin, Dorothy	Potter, David	Weaver, Kathleen Williams
Grim, Earl R.	Ray, Bonnie	Weller, Flora Mae
Grimshaw, Michael	Ray, Wilbur L.	Wellman, Sherrill
Hard, Warren	Ryan, Kathleen	Witt, Forrest
Hausmann, Marie	Shuman, Marguerette	Wolf, Mary Louise
Hawkins, Marion D.	Sigler, Jerry	Wood, Bertha
Hawkins, Priscilla	Sigler, Ray	York, Naomi
Hazzard, Charlotte	Sigler, Shirley	

Bible School

SENIORS





Collins Thornton Lawrence Aspen Mertin Wilson



Earl Gardner Lyle Jones George White



Calvin Wheeldon Clarence Frye Charles Farmer

Class of

19



La Vera Leaming

47

BIBLE SCHOOL UNDERGRADS





Adam Ingle
Rex Morris
Hiram Higgins



James Leonard
Burdetta Lepley
Glenn Warstler



Darwin Pierce
Emery Moyer
Robert Sharp



Roy Wells
Ella Gotschall
Dale Jackson



Kenneth Coil
Harl Kelly
LaVerne Lynch



Harry Hughes
Paul Holtzclaw
John Carrico

Elmer Bernard Davenport
 Alma Fern Blakley
 Joseph Polmounter



Lowell H. Sparks
 Frank E. Payne
 Noah Arnold Cash



Arthur U. Burnside
 Lulu Catherine Keeler
 Dewey Mounts



Claude Terrell
 John Warren Young
 Warren C. Thompson



Jerome S. Houck
 Virgie Irene Hall
 Alvin Erwin Bowes



James Porter Mahan
 Levi August Tassler
 Henry Daniel Bulla



Luther Edward Page
 Estalene Mae Winters
 Robert Edwin Newman



BIBLE SCHOOL UNDERGRADS NOT PICTURED

Brown, C. W.

Cobb, Allen

Cobb, Louis Willard

Cook, Charles Thomas

Crane, Pearle Audry

Dabill, Florence Imogene

Fancher, Edgar E.

Fox, Charles Leamon

Goodall, Haven Lloyd

Hanesworth, Harold Hudson

Hesler, Paul Adolph

Johnson, Velma Eileen

McClure, Darl Burlin

Moore, Richard Arnold

Niece, Perry Earl

Paisley, Richard

Pierce, Lysle Addison

Swan, Kenneth

Whipple, Edwin Elsworth

Wilson, Milton Stephen

High School





SENIORS

Edwin H. Price

Marcella Christman

Naomi Ruth Kennedy



Lefa Axtell

Virginia Klink

Eldon Cornett



Cleveland G. Holley

Goldie Williams

Ethel J. Lutz



Mary Lou Brown

Bobby Craig

John Jarnagin



Gladys S. Craig

Aliecia Mae Bushey

UNDERGRADS

Betty Jean Chalfant
 Samuel Collins
 Hazel Grishman



David Nielson
 Opal Williams
 Gertrude Farmer



Grace Ling
 Ida Klink
 Howard Clements



Daniel Wheelock
 Marjorie Bradley
 Helen Covell



Esther McClellan
 Elizabeth Smith
 Talmadge Randall



Raymond A. Brodien
 Edna Barrier
 Doris Ruth Miller



HIGH SCHOOL UNDERGRADS NOT PICTURED

Boyer, Wilma Louise
 Burrington, Ernest Monroe
 Chaney, Joe David
 Clupper, Paul Ray
 Cook, Audrey O. Crane
 Crane, Pearl Audrey

Evans, John Frederick
 Fearn, Daniel Paul
 Frederick, Frances Verna
 Franklin, Mary Elizabeth
 Frye, Joyce Daisy
 Fugate, Harrison

Gough, Joseph Jeremiah
 Harris, Mary Elizabeth
 Jones, Harold Paul
 Harsh, Paul
 Johnson, Lavella
 Jackson, Jessie Jean

UNDERGRADS



Edward Robert Ferguson

Betsy Jean Klink

Pauline Frances Howard

Alfred Allen McQueary

Donald Brant Burghorn

Flora Ellen Lash

Phyllis Florence Johnson

Norman James Kohrer

David Eugene Craig

Estle Herbert Doss

Violet Mae Miller

Paul F. Burrington

Kenneth Calvin

Fay Alene Calvin

David Albert Hess

Eleanor Fay McReynolds

HIGH SCHOOL UNDERGRADS NOT PICTURED

Lash, Flora Ellen
 Locher, Tweena Mae
 McReynolds, Wilma Roberta
 Minco, Loretta Jean
 Miller, Violet Mae
 Morgan, Bonita Blanche

Oliver, Gerald David
 Payne, Ruth
 Pryor, Robert Dean
 Rahrar, James Lee
 Reidel, Maynard Harold
 Scarborough, Rosa Mae

Sturgeon, Geneva
 Suderman, Patricia Cornelia
 Terrell, Claude Conway, Jr.
 Trapp, Lillie Bell
 Tripp, Dorothy
 Ward, Clarence Waldo

ALPHA TAU DELTA

HONOR SOCIETY

SENIORS

Fulmer Wanda
Harshman, Virginia
Raab, Ruby Imogene
Starr, Lois
Weeks, James
Welch, Frances Weaver
Wickersham, Gordon
Willfong, Ruth Leona

JUNIORS

Cailey, Ruth Marie
Chaney, Frederick W.
Flaughter, Jewell
Goodwin, Jack
Houghtaling, Ruth
Ketterman, Edith
Morford, Myron C.
Perkins, Beulah
Rodgers, Paul M.
Stentz, Mary Joan
Von Seggen, Donita
Wells, Alberta
Wilson Helen F.

SOPHOMORES

Akers, Orval
Arnold, Urey
Bergquist, Doris
Beyer, Arlene Iola
Brunt, Russell
Carey, Albert
Greek, Carl Edwin
Grimshaw, Eileen
Hand, John
Kendall, Paul James
Kruse, Clemens G.
Lindberg, Evelyn
Tonk, Berdella
Whitehead, Margaret

FRESHMEN

Baker, Roberta
Hughes, Marjorie



BIOLOGY CLASS



THE BIG 4



Socially



Who's Who

IN AMERICAN UNIVERSITIES
AND COLLEGES



Harry Grimshaw



Jewell Flougher



Wayne Cooper



Gordon Wickersham



Kathryn Meadows



Wanda Fulmer



James Weeks



Virginia Harshman



Paul Baker



Imogene Raab



Lois Starr

Organizations

STUDENT COUNCIL



Left to Right—Robert Keys, Gerald Moore, Bernie Smith, Jerome Houck, Harry Grimshaw, Ted Kerr, Dr. Mitten, Helen Cremeans, Estle Doss, Charles Farmer.

By means of an annual election, a president and a treasurer are chosen by the student body to serve as officers of the Student Council. Each class, in turn, elects its own representative to the council. Thus, the students have a medium through which their desires are presented to the administration.

Under the direction of President Ted Kerr, Treasurer Helen Cremeans, and Dr. L. G. Mitten, who has served for two consecutive years as Faculty Advisor, the Student Council of 1946-47 has given a year of faithful service to the students and to the school. From its own ranks, the group elected Harry E. Grimshaw to serve as secretary.

Several projects for the entertainment and cultural advancement of the student body were sponsored by the Student Council this year.

CALLED MISSIONARY BAND



First Row—Doris Ensley, Katherine Meadows, Alberta Stephens, Lois Michaels, Dr. Van Duyn, Dolly Shockley, Claire St. John, Mrs. Ethington, Prof. Ethington.

Second Row—Dorothy McClellan, Wilma Cross, Berdella Tonk, Betty Cook, Geneva Sledd, Juanita Pate, Glenna Curtis, Lois Zachmire, Margaret Csolkovits, Mary Edna Gunnels, Joyce Barrett, Grace Davis.

Third Row—Grace Freeman, Hazel Coomer, Fay Calvin, Ruth McGillvary, Geraldine Lewis, Hazel Unger, Mildred Grisler, Alice Supernois, Theora Kirkpatrick, Clara Jones, Helen Ullom.

Fourth Row—Goldie Williams, Irene Smith, Mary Ebert, Paul Rodgers, Charles Perry, Darrell Swisher, Fred Addison, Hazel Selix, Joyce Stacy, Helen Owen.

Fifth Row—Lucille Cole, Mary Leib, Peggy Chilver, Martelle Morgan, Neuman Sheldon, Paul Cook, Pauline Richey, Naomi Long, Katherine Huffman, Ruby Gee, Norma Strong.

This organization is composed of those students who feel the call of God to foreign missionary work.

The Band, every second week, sponsored a program devoted to various Missionary interests, and every Thursday received the all-student offering that helps carry on the Missionary work of the Church of the Nazarene.

Supplementing these activities, the Band also met once a month for a devotional service and once a week for prayer.

The peak of the year was reached at the Annual Breakfast. At that time officers were elected and plans made for the coming year.

INTERNATIONAL RELATIONS CLUB



First Row—Floyd Zurcher, Charles Leopard, Dr. Garner, Imogene Raab, Ruth Bergen, Paul Baker.
Second Row—Vivian Clingan, Naomi Sindors, John Davidson, Raymond Coy, Paul Pierson, Royal David, Beverly Keesler, Bonnie Grable.
Third Row—Dorothy Seitz, Virginia Harshman, Katherine Kitt, John Sapp, Sam Munn, Dean Stark, Arlene Bey-
 er, Bernadine Leopold.
Fourth Row—Donald Hough, Lester Sprang, Joe Nealson, David Ehrhn, Monroe Baker, Lloyd Bruning, James Lucas, Paul Pepper.

The International Relations Club, a world-wide organization, was organized at Olivet in 1943, under Dr. James R. Garner. This was the answer to the need for an organization to study and further international peace.

The activities of the year included an intercollegiate debate between Olivet and Wheaton College, lectures by Dr. J. R. Gardner on Foundations for International Peace, a lecture on Eire, and the annual banquet co-sponsored with the Commerce Club.

The year was highlighted by the annual Regional Conference at Butler University, Indianapolis, Indiana.

OLIVET MINISTERIAL FELLOWSHIP



The organization of the Olivet Students Ministerial Fellowship has met a definite need on the campus of Olivet College. The organization was effected on November 26, 1946, with the Dean of the School of Theology, Dr. J. Russell Gardner, presiding, and the President of the College, Dr. Grover Van Duyn, presenting the keynote address.

The Chairman-elect for the year was Rev. Russell D. Bredholt, with Clayton Bailey chosen as vice-chairman. Other officers elected were: Maudie Huston, secretary; Velma Johnson, corresponding secretary; Ted Kerr, treasurer; Ted Holstein, chorister; Maudie Huston, pianist; Carl Greek, program chairman; L. H. Sparks, publicity chairman; and John Smith, social committee chairman.

The primary objectives of the O. S. M. F. are the following:

1. The promotion of Christian fellowship among ministerial students without regard to academic distinctions.
2. Provide for the solution of personal problems through special counsel and advice.
3. Increase the ministerial efficiency of each member by studying the problems of church leadership.
4. Enlarge the perspective of each prospective worker through contact with representative speakers of each department of our church.
5. Secure through united prayer and effort the maximum of Divine blessing on the Fellowship, the School and the Church.

PHI TAU OMEGA



First Row—Velma DeBoard, Edna Lockner, Winnie Wilson, Miss K. Howe, Ruth Cailey, Ruth Jones, Katherine Kitt, Virginia Harshman.

Second Row—Ruth Bergen, Vivian Clingan, Edith Ketterman, Dorothy McClellan, Donna Harshman, Myrtle Sonju, Arlene Millsbaugh, Beverly Keesler, Florence Emmahiser, Reuhama Markins.

Third Row—Laurena Wilson, Marjory Williams, Mary J. Snodgrass, Ruth Moriarity, Donna Randolph, Alberta Wells, Mary Jean Beck, Emmabelle Botner, Elaine Gardner, Iva Tate.

Fourth Row—Dorothy Seitz, Maxine Kerr, Louise Hurt, Beulah Perkins, Margaret Csolkovitz, Donita Von-Seggan, Pearl Coomer, Irene Gragg, Doris Bergquist, Betty Schrider, Juana Briles.

Fifth Row—Jeanne Taylor, Madice Kettleson, Opal Lowery, Lucy Stacy, Naomi Lewis, Wanda Fulmer, Charlene Zook, Mary Leib, Mozelle Overton, Barbara Bedsworth, Betty Axtell.

Sixth Row—Lois Starr, Betty Goodwin, Helen Wilson, Melvin Wilkinson, Glen Park, John Strahl, Jack Goodwin, Pershing Weaver, Raymond Coy, Betty Bronson, Esther Asmussen, Carol Tooley.

The Phi Tau Omega, Olivet's chapter of the Future Teachers of America, founded in 1943, gives teachers in training the opportunity to become acquainted with the history ethics, and program of the organized teaching profession and gives practice in working together on problems of the profession and of the community.

Among the outstanding programs of the year were the films shown by Mr. C. C. Moser of the Salem Children's Home, Flanagan, Illinois.

Inspiring addresses were made by Mr. Jesse Honn, Superintendent of Schools in Bradley, Illinois, and Professor L. A. Marquart, from Olivet.

STUDENT PRAYER BAND



The Student Prayer and Service Band of Olivet, under the leadership of Virgil Borden, president, and Dr. Grover Van Duyn, sponsor, has a two-fold purpose, first; to foster the development of Christian life through prayer, testimony, and public service; second, to provide a channel for the expression of Christian life through service to others by personal work and public service. Through the Student Devotional Hour each evening at 6:15 to 7:00 the spiritual life of Olivet students has been greatly enriched. These services are to be looked forward to by the new students: they have proved to be unforgettable memories to the out-going students.

COMMERCE CLUB



First Row—Dr. Mitten, Ruth Cailey, Mozelle Overton, Rosellen Oswalt, Cecil Roby.

Second Row—Leota Ringhiser, Phyllis Hendricher, Mary Harshman, Lois Jahde, Irene Smith, Margaret Whitehead, Ruth Engeman, Joyce Rarich, Joan Nicholson, Mary J. Snodgrass, Wilma Von Seggen.

Third Row—Geneva McHawland, Orma Manley, Twyla Baker, Ruth Houghtaling, Jean Hershey, Donna Harshman, Beverly Engeman, Carolyn Reese, Pauline Uhrig, Belle Botner.

Fourth Row—Neta Jory, Eileen Goss, Betty Bronson, Lorraine Sparks, Mary Richcreek, Wilma Ayers, Alma Brock, Nadine Skaggs, Helen Cremeans, Alice Hetzer.

Fifth Row—Dale Harvey, Edward Benge, Emeroh Deal, Paul Wells, Don Gilbert, James Conrad, Sam Munn, Richard Lefton, Russell Dawson.

The Commerce Club, founded in 1944, seeks to motivate scholarship and interest in business. Through this club, social contacts are made with the outside world.

Guest speakers have been Harlan Heinmiller, Asst. Production Manager of the General Motors Corp.; Ervin Benson, Field Secretary for the General Department of Church Schools, at Kansas City, Missouri; and Ralph Francis, manager of the Citizens System Loan, Kankakee, Illinois.

Climaxing the activities for the year was the Spring banquet shared with the International Relations Club.

The over-all policy of the Commerce Club is to promote better Christian ideals among the students enrolled in the Departments of Business and Economics.

PLATONIAN PHILOSOPHICAL SOCIETY



First Row—Dr. Demaray, Bill Bennett, Dr. Gardner, Wayne Welton, Gordon Wickersham, Irene Clerico, Prof. Wesche.

Second Row—Kenneth Bryant, Lester Ringhaiser, Maude Huston, Ruth Jones, Bill Chambers, Victor Enoch.

Third Row—John Davidson, Paul Rodgers, Imogene Raab, Geraldine Brown, Christine Sonju, Ruth Wilfong, Ted Sturgeon, John Wine.

Fourth Row—Paul Baker, Myron Morford, Lyle Akers, Wendell Arnold, Paul McCoy, Donald Hough, R D. Bredholt.

Fifth Row—Warren Christian, William Barnes, Harry Grimshaw, Robert James, Clem Crews, Luther Watson, Ray Gardner, John Smith.

The Platonian Philosophical Society is open primarily to upperclassmen of the college, with honorary membership extended to those of the faculty who are interested. It was organized to stimulate thought in the fields of philosophy and theology among the students especially interested in these subjects. Many stimulating discussions were held following the reading of various papers at the monthly meetings. Papers were given by such outstanding men as Dr. C. E. Demaray, Dr. Mendel Taylor, and the Rev. Roy Stevens. A banquet in April, with an outside speaker and the installation of next year's officers climaxed the year's activities. Under the able leadership of the president and his helpful officers, each meeting was stimulating to the minds of all and added to the education of all who attended.

OLIVET LINGUISTIC SOCIETY



First Row—Evabelle Knisely, Wilma Von Seggen, Prof. Goodwin, Eileen Grimshaw, Edith Ketterman, Lorraine Sparks, Pauline Uhrig, Grace Metas.

Second Row—Margaret Smith, Marian Ream, Roberta Lipp, Grace Davis, Naomi Atkinson, Marjorie Hughes, Mary Beck, June McCready, Mary Logsdon, Norma Serrine.

Third Row—Carolyn Cobb, Wilma Cross, Dorothy McClellan, Barbara Bedsworth, Charlotte Attig, Evelyn Treece, Alice Hetzer, Orma Manley, Joy Bills.

Fourth Row—Ruth Chase, Donita Von Seggen, Maxine Kerr, Ruth Wilfong, Ben Crocker, James Rogers, Charles Alstott, Carolyn McDonald, Marion Anderson, Twyla Baker.

Fifth Row—Alma Brock, Kathrine Somerville, Mary Steinegger, Mary Horton, Dorothy Elwanger, Nadine Nutt, Charlotte Hazzard, Pauline Silvernail, Mary Richcreek, Charlene Zook.

Sixth Row—Paul Pierson, Paul McCoy, Dean Stark, James Malone, James Lucas, Dale Baldrige, Joe Nielson, Paul Gamertsfeldter, Sam Ross, Maynard Reidel.

Founded in 1943, the Linguistic Society has become one of Olivet's largest organizations. Students of French, Latin and German are eligible for membership in this club.

The purpose of the organization is to stimulate interest in and acquire knowledge of the peoples of other lands in regard to their customs, traditions, policies and modes of living.

Educational films have been used to further this purpose.

A formal spring banquet with a special speaker is an annual highlight of this group.

FORENSIC SOCIETY



First Row—Irene Clerico, Alberta Wells, Miss McKinley, Barbara Wind, Lois Michael, Mildred Kinsey, Mary Edna Gunnels.

Second Row—Ruth Watson, Mildred Wilson, Sarah Davidson, Paul Rodgers, Imogene Raab, Orval Akers, Ruth Cailey, Ruby Gee, Mary Habeggar.

Third Row—Harvey Doud, Helen Cremeans, Katherine Kitt, Beverly Schroll, Ray Hawkins, Irene Schmitt, Evelyn Duff, Arlene Beyer, Elaine Gardner.

The Forensic Society is the organization sponsoring speech activities at Olivet. Their constitution states: "The purpose of this organization shall be to increase interest in Public Speaking and to develop the arts of Debate, Oratory, Declamation, and other forms of Forensic activity."

The monthly meetings of the Society included a variety of programs. The "Inspirations at Christmas" was presented to the English Guild at the Christmas meeting and repeated in chapel; a public discussion of Negro Tolerance was given by the advanced speechmaking class. The annual Forensic-Chi Sigma Rho Formal Banquet in the early spring concluded the activities of the year.

CHI SIGMA RHO



First Row—Mary Edna Gunnels, Priscilla Hawkins, Esther Ferguson, Audrey Schramm, Esther Gale, Naomi Bearinger, Dorothy Zachary.

Second Row—Barbara Wind, Grace Metas, Betty Brown, Alberta Wells, June McGuire, Betty McCord, Madonna Randolph.

Third Row—Jay Pitts, John Parrott, Charles Henderson, Elmer Brodien, Paul Whitteberry, Leonard Crites, Jesse Briles.

Fourth Row—Douglas Blue, Ray Hawkins, Dudley Powers, Floyd Gale, James Conrad, Paul Liddell.

Chi Sigma Rho contributes both an entertainment and an expression of art in a very old form. The Greeks used a speaking choir in their dramas to serve as interpreter between audience and actors. With its roots thus in the classical, Chi Sigma Rho has high ideals for artistic expression. To revive this ancient art form, to develop an aesthetic appreciation of literature through artistic oral interpretation, and to increase the universal appeal of poetry and prose is the object of the choir.

Performance of "A Child Is Born" was given at the Christmas Banquet, and "The Terrible Meek" was given during the Easter season.

ENGLISH GUILD



First Row—Prof. McClain, Gordon Wickersham, Ruth Jones, Betty Downs, Barbara Wind, Madice Kettleson, Prof. Bump.

Second Row—Marian Ream, Elaine Gardner, Donita Von Seggen, Ruth Wilfong, Ruth Watson, June Measell.

Third Row—Warren Holcomb, Geraldine Brown, Pershing Weaver, Irene Gregg, Renhama Markins.

The Olivet English Guild was founded in 1944. Its purpose is to stimulate an appreciation for contemporary literature and poetry, to encourage creative writing, and to share with its campus compeers its ideals, both in intelligent conversation and creative writings.

Those eligible for membership in the Guild are English majors or minors of junior or senior standing and second semester sophomores working toward an English major.

Two outstanding events of the year were the Chapel program presented on St. Valentine's Day and the spring banquet, with Miss Bump, the faculty adviser, as guest speaker.

DAUGHTERS OF MARTHA ANN WINES



First Row—Mrs. Donson, Velma Johnson, Maudie Huston, Carol Tooley, Katherine Allen.

Second Row—Audry Crane Cook, Pearle Crane, Ella Gotschall, Lulu Keeler, Imogene Raab, Frances Welch, Edith Servies.

Third Row—Doris Ensley, Virgie Hall, Naomi Long, Christine Sonju, Pearl Coomer, Ruth Wilfong, Goldie Williams, Lucile Hildenbrand.

This organization has been in progress since 1943. It meets once a month and many interesting programs are presented during the year.

The purpose of the organization is to establish a good foundation for future work in the ministry. The fellowship which is enjoyed proves to be a great incentive for future work.

SCIENCE CLUB



First Row—Dr. Chappell, Lois Michaels, Melvin Wilkenson, John Clerico, Paul Rodgers, Prof. Strickler.

Second Row—Josephine Ambrosio, Roberta Lipp, Wilma Cross, Pauline Richey, Howard Stroble, Charles Henderson, Joyce Reeves, Charlotte Carmony, Betty Grable, Grace Davis.

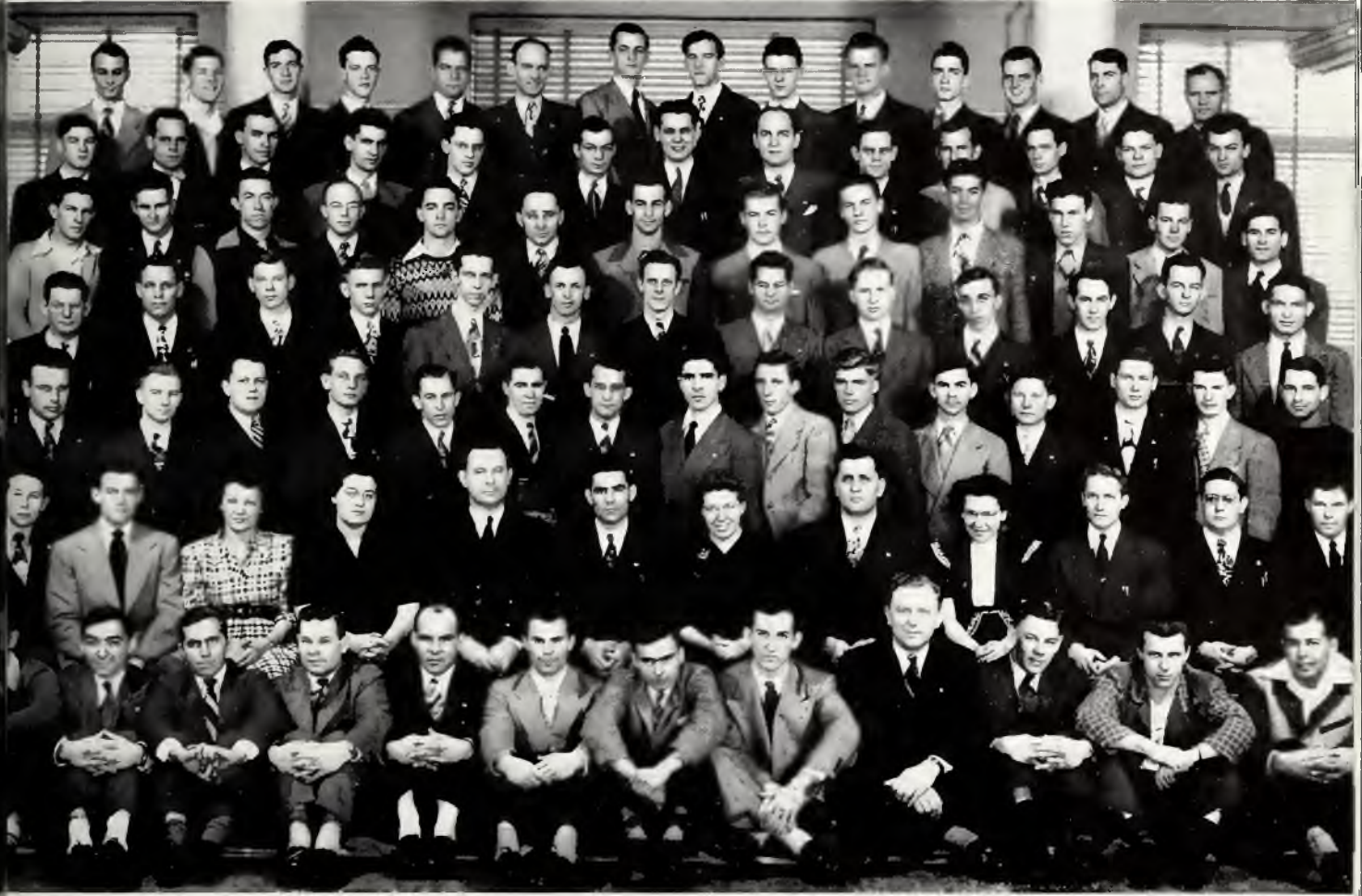
Third Row—Alberta Stephens, Helen Wilson, James Bauerle, Monroe Baker, Dwight Keller, John Howe, Glen Parks, Anna Hines, Carolyn Cobb.

Fourth Row—Dolores Jones, Esther Asmussen, Naomi Lewis, William Warner, Gordon Peterson, Phillip Knisely, Paul Harvey, Geraldine Lewis, Geraldine Brown.

The Olivet Science Club meets on the first Tuesday of each month to discuss the current scientific issues which concern the members of the organization.

The purpose of the club is fourfold: first, to promote a greater interest and a greater appreciation in all branches of science in our college; second to share scientific knowledge among its members and with others; third, to stress the practical applications of the sciences; and last, but not least, to uphold the Christian ideals of our college.

G. I. CLUB



First Row—Ted Chaney, Floyd Zurcher, Royal David, Raymond Coy, Paul Holtzclow, Orval Akers, Charles Perry, Marion Hawkins, A. A. McGueary, Lester Ringhiser, David King, Leo Baugus.

Second Row—Harvey Dowd, Cliff Ladman, Lena Horner, Geraldine Brown, Claude Terrill, Lyle Akers, Naomi Long, Verl Jenkins, Jean Hershey, Virgil Borden, Luther Page, Arthur Burnside.

Third Row—Lowell Miller, Warren Holman, Allen Marrett, Ivan Smith, James Mahan, Robert Prior, Dewey Mounts, Earl Morgan, John Sapp, George Mellish, Roy Wells, Omer Robbins, James Trimble, Glen Park, Mark Fiedler.

Fourth Row—Harry Hughes, John Wine, Philip Knisley, Richard Lefton, Dale Sievers, Lester Sprang, Maynard Reidel, William Chambers, Vernan Newman, Harry Hardin, Floyd Bradley, Craig Dillman, Ronald Featherston.

Fifth Row—Jesse Briles, Paul Harvey, Gerald Moore, Bill Warner, R. O. Watson, Clarence Griffith, Cliff Marlin, James Hieftje, David Vangunten, Russell Dooley, Charles Alstott, Joe Nielson, Sam Ross.

Sixth Row—Leonard Crites, Cecil Roby, Lewis Cobb, Kenneth Coyle, Leonard Hubartt, John Smith, Harry Grimshaw, Luther Watson, Don Halley, Don Burghorn, Lowell Sparks, Orville Wright, John Clerico.

Seventh Row—Paul Cook, Floyd Webb, Charles Leopard, Paul Liddell, Willard Basham, William Barnes, Jim Conrad, Monroe Baker, Don Gilbert, Gordon Peterson, Ray Hawkins, Clem Kruse, Melvin Wright, Warren Christian.

WOMEN'S DEBATE SQUAD



C. S. McClain, Imogene Raab, Barbara Wind,
Helen Cremeans, Helen Everett, Ruth Cailey.

The women's debate squad, though slightly smaller in number than the men's, is not inferior in quality. They have an average in debates won and lost equal to that of the men.

The teams have taken part in three tournaments in which most of the contest debating is done. One of these was at Illinois State Normal University at Normal, Illinois; one at Eastern State Teachers College at Charleston; and one at Northern Teachers College at DeKalb. In addition, Olivet's teams have entertained Wheaton College and Houghton College at Olivet, and have visited Wheaton and North Central Colleges for debates.

Ruth Cailey



MEN'S DEBATE SQUAD



Standing—Charles Scott, Bill Bennett, Albert Carey, Lyle Akers.
Sitting—Bill Chambers, Bernie Smith, Ray Hawkins, C. S. McClain.

Bill Bennett



Olivet Nazarene College resumed its intercollegiate debate relations this year, after having suspended them for the duration of the war. In the years past, debate has been a major activity of the College and the Olivet debaters have given a good account of themselves, having won the Illinois Intercollegiate Championship in 1939 in competition with eighteen colleges and universities.

We are beginning again at the bottom this year; all of the members of the squad are inexperienced. Nevertheless, the squads are demonstrating real ability and have won a total of twenty-seven decision debates, as compared with a loss of nineteen.

CHRISTIAN SERVICE COMMITTEE



(Left to Right): W. B. Larsen, J. R. Gardner, Grover Van Duyn, R. L. Lunsford, C. S. McClain, Thelma Pitts, Louise McKinley, Wayne Donson.

Through the Christian Service Committee Olivet now offers a valuable service to all churches in this area. Each student who wishes to participate in nearby week-end services is supplied with a card from this committee, which certifies his ability as a Christian worker, and at the end of the year he is awarded a certificate indicating a year of satisfactory service. As requests for talent come to the committee, they in turn notify these Christian workers, thus providing opportunities to gain experience in particular fields of training.

About two hundred students are registered for this kind of service and their efforts have already proved fruitful. It is not unusual for the Christian Service Committee to receive reports totaling fifty converts for a single week-end.

OFFICERS

President, Dr. Van Duyn; Director, R. L. Lunsford; Secretary, Thelma Pitts.

STUDENT PASTORS



First Row—Mertin Wilson, Wendell Arnold, Francis Reeves, Dudley Cook, Collins Thornton.

Second Row—Harry Hughes, Charles Farmer, Newman Sheldon, James Weeks.

Conscious of a divine call to preach the gospel, these student pastors, each week-end, leave the campus to minister to outlying churches. The experience gained, the blessings received, and the opportunity to be in active Christian ministry more than compensates for any difficulties encountered.

With such zeal and passion as this demonstrated on the campus and in the churches served, we may be assured that Olivet is steadily and surely building for the future by giving to our church young ministers who have worked well preparing themselves for the great tasks of tomorrow.

LABORATORY SCHOOL



Two years ago the Laboratory School was established on our campus. Fifty-two pupils are accommodated in two large, suitably decorated and well-equipped, modern school rooms. Mrs. Fay Phillips is teacher for the first four grades, and Mrs. Rachel Chappell teaches the fifth grade through the eighth.

This school is conducted under the supervision of the Kankakee County Educational System, and directed by the Department of Education of the college.

WOMEN'S RESIDENCE ASSOCIATION



In the spring of 1946 the resident women of the graduating class set up the plans for the Women's Residence Association of Olivet Nazarene College, and left those plans as a legacy to the senior girls of 1947. Registration day last fall, the new organization found itself bereft, because of its first president, Miss Helen Bolander (now known as Mrs. Willard Basham) and another officer or two, ordinarily regarded as vital for cohesion! Quick reconnoitering disclosed a very able president in the person of Miss Barbara Wind, classified as a speech major, and now already distinguished as a charming diplomat of rare ability by her leadership of two hundred fifty women—a grand assignment in any language.

Other officers are Miss Virginia Harshman, vice-president; Miss Charlotte Carmony, secretary; Miss Ruth Watson, treasurer; Miss Pitts, Dean of Women, ex-officio Council member. The officers, and additional representatives from each class comprise the Council, which carries on the legislative and judiciary functions of the organization.

The special projects of the Association this year have been a welcoming party for new students last fall given by the Big-Little Sister Committee, the annual Christmas Dorm Party, the Open House Event in February, and the colorful lawn party for spring. The organization has proved a means of expression and of improvement of group morale and has sponsored a greater degree of esprit de corps among the women students on the campus of Olivet.

Events *OF THE YEAR*



FRESHMAN INITIATION

With triumphant shouts, the exhibition of two caged specimens of Slobovians, and a mountain of green caps, the sophomores interrupted a perfectly innocent chapel program with the announcement of freshmen initiation. In spite of the vindictive impositions of their oppressors during the following ordeal, the freshmen proved themselves to be good sports and were rewarded by a friendly reception in the gymnasium.

SLOBOVIAN SPECIMENS

AT LARGE BUT
NOT DANGEROUS



BUILDING ON THE CAMPUS



In Olivet's eagerness to accommodate a growing enrollment, every available space is being used to the greatest advantage, and new facilities are constantly being added. During the past months the G.I. homes were completed, class rooms were partitioned, the radio department was established, a new switch-board and additional telephone extensions were installed, and other improvements made which aid in making this a greater Olivet.



BIBLE SCHOOL SENIOR TRIP



JUNIOR SNEAK



SENIOR TRIP

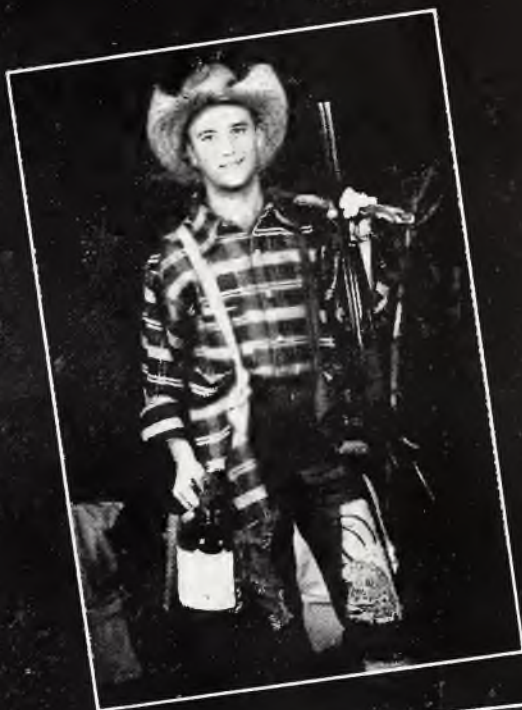




HALLOW



WEEN PARTY



CHRISTMAS



One of the most successful projects sponsored this year by the Student Council was the all-school Christmas banquet. The gymnasium was transformed to an array of colorful decoration which was largely a result of the laborious efforts of the student body president, Ted Kerr.

A larger crowd than had ever attended a previous Christmas Banquet, enjoyed an evening of well-planned entertainment. The Chi Sigma Rho, under the direction of Miss McKinley, presented a dramatic performance of "A Child Is Born", which added an unusual significance to this Christmas season.

This pleasant evening of Christmas celebration will long remain in our memories.

BANQUET



Scenes from
"A CHILD IS BORN"
presented by
the
Chi Sigma Rho



OLIVET NIGHT DINNERS



THELMA PITTS

A pleasant and familiar sight it was on Tuesday evenings to see Olivet's well-dressed young men and women gathering in the candle-lighted dining hall at six-thirty o'clock, to enjoy a brief respite from the week's routine. The Olivet-night Dinners afforded the fellowship of friends in a group and a pleasant bit of variety from our usual cafeteria means of serving.

Talented members of the music department provided dinner music throughout the meal each week, and the presence of Dr. and Mrs. Van Duyn and Professor and Mrs. Larsen, as well as that of several other faculty members, allowed the students an opportunity for association with them which is somewhat rare in the whirl of school activities.

Mr. and Mrs. Wellman worked hard to prepare these delicious meals, and the cheerful contribution of the capable waiters and waitresses, whose work incidentally, was entirely gratis, was greatly appreciated.

CANDIDS



Publications

1947



Standing—Lowell Sparks, Gerald Moore, Wendell Arnold, Paul Hubartt, Charlotte Carmony.
Sitting—Chuck Oswalt, Esther Ferguson, Prof. Strickler.

EDITORIAL STAFF

Paul Hubartt.....	Editor-in-Chief
Wendell Arnold.....	Assistant Editor
Charlotte Carmony.....	Associate Editor
Clifford Bryant.....	College Representative
Alma Blakely.....	Bible School Representative
Elwin Price.....	High School Representative
Carl Clendenen.....	Sports Representative
Professor Bump.....	Literary Critic

BUSINESS STAFF

Charles Oswalt.....	Business Manager
Lowell Sparks.....	Assistant Business Manager
Gerald Moore.....	Associate Business Manager

PROFESSOR STRICKLER

Faculty Adviser and Photographer

AURORA



It is impossible to record all of the activities of the past year, but we hope that what we have portrayed will enable you to relive some of your experiences at Olivet.

As a result of various hindrances which have been so plentiful, the original plan of the 1947 AURORA has undergone many revisions. However, if we succeed in making your future days of reminiscence more vivid, then our success has been complete.

We are indebted to Professor Strickler for his untiring efforts and time spent in photographing many of the activities depicted in these pages.

Charles Oswalt contributed many hours of relentless labor and planning to provide funds for the AURORA during one of its most financially hazardous years. With the

creation of "The Aurora Kid" he directed the sales campaign which was introduced in a humorous chapel program.

Chuck's beautiful spirit and cooperation were a source of inspiration to the entire staff.



The GLIM



JUNE MEASELL
Editor-in-Chief



JOHN STRAHL
Business Manager



EDITORIAL STAFF

June Measell.....Editor-in-Chief
Ruth Cailey.....Assistant Editor
Jack Goodwin.....News Editor
Paul Baker, Betty Downs.....
.....Feature Editors
Urey Arnold.....Music Editors
Jim Early.....Sports Editor

BUSINESS STAFF

John Strahl.....Business Manager
Pershing Weaver.....Asst. Business Mgr.
Irene Clerico.....Circulation Manager
Esther Ferguson, Ruth Moriarity.....
.....Typists

PROFESSOR MITTEN

Staff Adviser

MER GLASS



First Row—Prof. Mitten, June Measell, John Strahl, Esther Ferguson.

Second Row—Urey Arnold, Helen Everett, Barbara Wind, Irene Clerico, Ruth Moriarity.

Third Row—Jack Goodwin, Bob Keys, Jim Early, Pershing Weaver.

The GLIMMERGLASS staff, headed by Editor-in-Chief June Measell, affords a service in publicizing campus activities; it brings enjoyment to its readers through special feature columns and a high standard of collegiate journalism. Though hampered by a fire at the printing establishment where the paper had been published and forced to locate another place of publication, the staff lost a minimum amount of time in resuming the bi-weekly schedule of the paper.

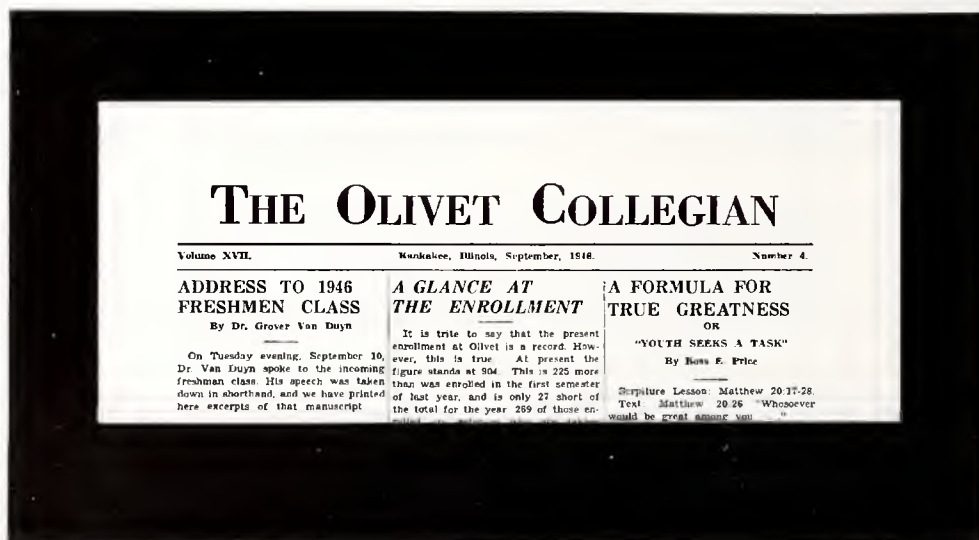
John Strahl the business manager, quite capably provided for financial security—no small task.

THE COLLEGIAN

The Olivet Collegian is edited by Professor Linford Marquart. It is published quarterly and serves as a bond between the alumni and their Alma Mater. The editor, an alumnus himself, is a virtual storehouse of historical information concerning Olivet. He looks after the interests of the Alumni Association on the campus and is instrumental in attracting prospective students each year.



LINFORD A. MARQUART
Editor





Campus Candidos



Radio

February 3rd marked the completion of the college radio and recording studios located on the fourth floor of the Administration building. Olivet radio courses and classwork are coordinated with the W-O-N-C radio workshop, which is responsible for planning and producing more than 1000 programs a year over our campus station, W-O-N-C. The Radio department consists of one large studio, one announcing room, a control room, W-O-N-C production room, general workshop and office of the Director of Radio, Prof. George A. Snyder.



PROF. GEORGE SNYDER
Director



BERNIE SMITH
Assistant



PAUL BAKER
Sports Announcer



ANNE NOHDEN
Announcer



ERLE FERGUSON
Program Director



Many valuable controls have been installed and many unobtainable ones were skillfully improvised by staff technicians.

One of the features of WUNC is a highly organized staff.





Spiritually



COLLEGE CHURCH



REV. ROSS E. PRICE

Pastor

Our Pastor has won a place in the hearts of both students and faculty at Olivet. We have all felt his influence as a spiritual leader. His devout life, his passion for the souls of Nazarene youth, and his high standard of intellectuality qualify Reverend Price as an excellent pastor and a model Christian personality. We will not soon forget his enlightening chapel talks nor his whole-hearted participation in all sorts of college activities.

Recently, Reverend Price introduced a church building program which received the immediate, hearty support of the church membership.

The Sunday School and all other branches of the church are steadily increasing as the entire Olivet program progresses. In years to come we will indeed be able to say, "They helped us build SPIRITUALLY."

A MESSAGE FROM THE PASTOR

BUILDERS WITH GOD

"For we are fellow workmen for God; you are God's . . . Building."

—I Corinthians 3:9(R.S.V.)

Many an artisan has wrought with bricks and mortar, stone and steel, for the erection of a great and beautiful structure which has endured beyond his own short life as a monument to his vision and industry. Yet the man who builds the wisest is one who builds that which will survive the crashing of bombs and the decay of time. Only personality shall survive beyond the limits of this material world into the eternities that shall follow. Hence, those of us whose privilege it is to become fellow-helpers of the truth in this great adventure of guiding the development of growing personalities here at Olivet are made both to rejoice and tremble in the presence of so great a task.

There is nothing more beautiful and significant than the building of Christ-like Character. And though it must be accomplished line upon line and precept upon precept, the whole structure fitly framed together increases into a true temple for the Living God. Olivet has a contribution to make to the lives of youth in the forming of Christian ideals and the practice of Christian conduct. For this we build, and for this we pray.

Moreover, this building of Christian personality is part of our greater task of building the Kingdom of God. God's people are the living stones built into a spiritual house constituting a spiritual organism indwelt by the Holy Spirit. We are confident that as growing Christian personalities take their part in responsible living that is vicarious in its motivation, we are helping to answer the prayer of a true disciple, "Thy Kingdom Come."

Finally, being convinced that a man's character is also his destiny, we rejoice that the building of Christian personalities is indeed the business of eternity. Our confidence is that some day beyond the years of toil and sacrifice, those who have found Christ at Olivet shall come from east and west, from north and south, bringing with them an innumerable company of redeemed personalities, to enter the mansions of eternal blessedness not made with hands in the City whose builder is God Himself.

To this high and holy goal our hearts aspire. Let nothing cheap, and nothing ordinary enter into our building. Let us use gold, silver, and precious stones, as we build on the foundation which God has laid, even Jesus Christ, our Rock of Ages.

What better monuments could be erected to the memory of Christian educators than the living personalities of those who have found life's highest goals through the influence of dynamic fellow workmen of God?

ROSS E. PRICE.

COLLEGE CHURCH



BARBARA McCLAIN
Pianist



LLOYD G. MITTEN
Sunday School Superintendent

ELLA LEONA GALE
Organist



WALTER B. LARSEN
Minister of Music



REVIVALS

REVEREND HOLLAND LONDON, District Superintendent of the Missouri District, was the evangelist in our fall revival this year. His dynamic messages were designed for the hearts of youth, and were received with enthusiasm and lasting results. Through his searching exhortations and because of the presence of God, many students were led into deeper Christian experiences. His enlightening chapel talks brought us face to face with new frontiers for service, and when the series ended we felt that an integral part of Olivet left with him.



REV. HOLLAND LONDON

We were privileged to have as our evangelist for the spring revival campaign, REVEREND I. C. MATHIS, Superintendent of the Dallas District. This outstanding pastor, evangelist and author was well qualified to minister to the students of Olivet College, and proved by his services to us, to be a messenger of God. As a result of the prayerful efforts of Reverend Mathis in this memorable series of messages, the spiritual life of the Olivet personnel was enriched.



REV. I. C. MATHIS

ORPHEUS



First Row—Winnifred Wilson, Donna Harshman, Vivian Buckner, Professor Larsen, Miss Gale, Ruth Everett, Helen White.

Second Row—Mary Collins, Miss Garner, Jackie Bowers, Helen Basham, Mrs. Larsen, Miss Zook, Nona Powers, June McGuire, Ruth Harris, Wilma Cross.

Third Row—June Measell, Victor Enoch, Bob Fiedler, John Bundy, Robert Keyes, Dean Fiedler, Russell Brunt, Carl Greek, Kenneth Bade, Paul Whiteberry, Naomi Bearinger.

Fourth Row—Ray Dafoe, Snowden Neill, Lawrence Dennis, Paul Kendall, Clifford Potts, Clifford Ladman, Dudley Powers, Paul Liddell, John Parrott, Gerald Moore, Urey Arnold.

The Orpheus Choir, organized by Walter B. Larsen in October, 1932, has throughout its fifteen seasons striven constantly to make a worthwhile contribution in choral singing. It has also endeavored to bring to its many listeners throughout the middle west a true "Ministry in Music." In order to fulfill this mission, emphasis is placed not only upon a high standard of musical performance but also upon the genuine Christian character of each member.

The repertoire of the choir this year included anthems by David Hugh Jones, Van Denman Thompson, Melius Christiansen, and Clarence Dickinson, as well as a variety of hymns arranged by Professor and Mrs. Larsen.

The highlight of the numerous appearances and events of the choir was the spring tour of Indiana and Ohio. The personnel of the choir, including Professor Larsen, director, and Kenneth Bade, pianist, numbered forty-one.

TREBLE CLEF



First Row—Lois Gibson, Dwan Swank, June Williams, Doris Bergquist, Elda Johnson, Naomi Atkinson.

Second Row—June West, Helen White, Ruth Clapp, Ruth Engeman, Eileen Grimshaw, Maudie Houston, Grace Metas, Donna Lou Donaldson, Jewell Flaughter.

Third Row—Geneva Fullen, Geneva Van Hook, Irene Buck, Janice Cobb, Betty Downs, Joan Miller, Mary Steinnegger, Ruth Moriarity, Mildred Wilson, Ruth Watson.

Fourth Row—Betty McCord, Charlotte Carmony, Mildred Grisa, Betty Bronson, Beverly Shroll, Wanda Fulmer, Evelyn Lindberg, Charlene Zook, Donna Randolph, Robena Hubble.

Under the direction of Mrs. Naomi Larsen the Treble Clef Choir, through hard work and perseverance, has forged for itself the reputation of being one of the school's outstanding musical organizations. In order to maintain a high standard of performance, the choir members are carefully selected and thoroughly trained. They are taught not only to sing with technical perfection, but to attain inspirational and spiritual interpretation.

Singing selections by Caesar Franck, T'schaikowski, and Handel, and special hymn arrangements by Mrs. Larsen, the choir never fails to thrill the audience and bring to its attention the splendid achievements in our School of Music.

Outstanding among its public appearances was a concert tour of the Iowa District.

Including Mrs. Larsen, director, and Geneva Van Hook, pianist, this all-girls' choir has a membership of thirty-five.

VIKINGS



First Row—Don Robinson, Gerald Jenkins, Paul McCoy, Professor Snyder, Percy Alison, Leo Chance, Rex Baker.
Second Row—Kenneth Bryant, Jay Pitts, Earl Morgan, Bryan Beaty, R. T. Savage, Leroy Reedy, Marion Hawkins, Roy Green.
Third Row—Eddie Taylor, Beryl Dillman, Lester Sprang, Robert Taylor, Cleveland Holley, Calvin Wheeldon, Paul Gregory, Paul Rogers, Ben Herrell.
Fourth Row—Curtis Savage, Harlow Koth, John Smith, Floyd Webb, Luther Watson, Paul Wells, Paul Studenaker, Don Gilbert, George Psaute, John Howe.

Increasing its membership from eighteen to thirty-five, the Vikings Male Chorus, under the baton of Professor George Snyder, is rapidly taking its place as one of the leading musical organizations at Olivet. Stressing flawless precision, the chorus has demonstrated real artistry.

In addition to its many activities, including regular appearances in the College Church, the chorus climaxed its year of work with a concert tour throughout northern Indiana and Michigan.

Included in its repertoire were selections by Mozart, Handel, Beethoven, Donizetti, and Dvorak, and hymns arranged for the chorus by Professor Snyder. Miss Elsie Stull acted as accompanist.

APOLLO



First Row—Dorothy Zachary, Betty Shearer, Audrey Schramm, Ruth Welch, Professor Zook, Mrs. Strickler, Mrs. Gardner, Elda Johnson, Mary Shafer.

Second Row—Dolores Jones, Betty Brown, Margaret Whitehead, Charlotte Hazzard, Beverly Shroll, Betty Miller, Jean Wilson, Naomi Bearinger, Sarah Davidson.

Third Row—Ben Herrell, Paul Gregory, Earl Morgan, Harlow Koth, Farrell Snow, Ray Brodien, Elwin Price, Ronald Featherston, Virgil Borden, Carl Clendenen, Kenneth Bryant.

The Apollo Choir is a new addition to the Olivet School of Music this year.

Under the direction of Professor Kathryn Zook, this choir has made regular appearances in the College Church, in addition to appearances in chapel programs and the Christmas Concert.

Organized to meet the rising aesthetic demand of a large student body, the Apollo Choir has proved itself worthy of its mission. As in the other ensemble groups, achievement is stressed from the standpoint of spiritual values and technical perfection.

Mrs. J. Russell Gardner acted as pianist for the choir.

ORCHESTRA



Another addition to the Olivet School of Music this year is the all-school orchestra. Besides providing excellent experience for students interested in ensemble work, the orchestra also acts as another aesthetic outlet for those who are interested in instrumental music.

Under the direction of Professor Walter B. Larsen, the orchestra made two appearances this season.

Because of the numerous talented students enrolled at Olivet, membership in the orchestra is by tryout and is limited to those students who can meet the requirements of the organization.

It is expected that the orchestra will soon become one of Olivet's foremost ensemble groups.

SENIOR RECITALS



MARY COLLINS—*Violinist*

Revealing a unique style characteristic of herself, Mary Collins has become a friend to all of her audiences. Performing with feeling, her inspirational playing has a grace and charm that only a violinist can produce. Her interpretations and phrasings are indicative of a thorough knowledge of her medium.

LAWRENCE DENNIS—*Bass*

Displaying fine musicianship and a command of technique, Lawrence Dennis has proved himself an excellent performer. His pure, rich tone possesses a wealth of quality and expressiveness. Singing with conviction, his jovial personality, and his warmth of color have been the delight of the audience at all of his appearances.



HELEN BASHAM—*Soprano*

Interpreting capably, and with sincerity, Helen Basham has revealed a voice of fine quality. Her earnestness, coupled with her humor, lend a certain charm to her performances. Graduating with a degree in Church Music, her faithful preparation has equipped her to take her place among the leading musicians of our Church.





VIRGINIA DEALE—*Pianist*

Playing with a studied intensity, indicative of much preparation, Virginia Deale's performances show a good sense of musicianship. Her technical proficiency is commendable, and her phrasing is clear. Interpreting with good taste, her performances are always impressive.

WANDA FULMER—*Pianist*

Exhibiting consummate technical powers, Wanda Fulmer plays with a breadth and depth that reveal an emotional understanding of what she is playing. Characteristic of her performances are a certain sweep and grandeur that always assure her of an enthusiastic reception.



VELMA DE BOARD—*Pianist*

Playing with a brilliance, and a wide range of tone color, Velma De Board is a favorite of the audience. Her sure, fleet fingers ripple over the keyboard with smoothness and ease; she plays, in the main, with technical skill, and is a capable interpreter and stylist.

PIANO ENSEMBLES



Virginia Deale
Mrs. Larsen
Wanda Fulmer
Velma De Board



Madice Kettleson
Kenneth Bade
Carl Greek
Geneva Vanhook



Physically





RONALD D. JONES
Athletic Director

To Professor Ronald D. Jones, athletic director, coach, and adviser—something new has been added. Congratulations for the great work accomplished at the University of Wisconsin and receipt of the Ph.D. degree!

Something new has also been added to the gymnasium. The new equipment, including both indoor and outdoor fixtures; major and minor sports equipment; the new high in interest, and ability and number of participants in O. N. C.'s athletics; all are due to the guidance and influence of Professor Jones.

MEN'S "O" CLUB



First Row—Don Burghorn, Lyle Akers, David King, Wayne Cooper, Robert Ferguson, Urey Arnold, Dale Fruehling.
Second Row—Leo Baugus, John Strahl, Ray Gardner, Paul Wells, Kenneth Foust, Virgil Nutt.

The Men's "O" Club was founded seven years ago to increase interest and ability and foster Christian integrity in all sports on the campus.

The most significant activity of the club is the co-sponsorship of the annual Alumni Homecoming, and the Tip-off game.



WOMEN'S "O" CLUB



Standing—Willie Wilson, Lois Zachmire, Mrs. Larsen, Donita Von Seggen, Wilma Ostrander, Irene Clerico, Mary Shaffer, Lois Starr, Esther Asmussen, Jean Hershey.

Sitting—Ruth Moriarity, Sally Gardner, Betty Brown, Donna Randolph.

The Women's "O" Club, founded at the same time as the Men's "O" Club, serves to unify the women letter winners. Together, the two clubs sponsor the annual Tip-off day, which is rapidly becoming a tradition in the sports activities at Olivet.

This year the Women's "O" Club played a preliminary tip-off game which was their first game since their organization, and in which they gained their first victory. Their opponents were the Women Alumnae.

TIP - OFF

Yeah, "O" Club! Yeah, Alumni! could be heard from the 1200 enthusiastic fans crowded into the O. N. C. Field house on the night of November eleventh. The Homecoming day ceremonies began with the chapel program, with Bob Keyes as Master of Ceremonies. The program consisted of the traditional Olivet songs and prophecies by the fans and coaches of the contesting factions. The Alumni dinner was a great success, with Dr. L. A. Reed of the Seminary as dinner speaker, delivering an appropriate and challenging address. The pre-game ceremonies in the Field House were capably and professionally conducted by Bernie Smith. The ceremonial presentation of both squads, and the fine music of the band will linger long in the minds of those who were present. The game itself was one of thrills and chills, ending in a win for the Jones-coached "O" Club and the score 37-27. This was the first win for them, the Alumni having won the four previous years. Those representing the Alumni were: John Hieftje, Orville Maish, Jesse Martin, James Shaw, Wilbur Beeson, Glen Williams, James Green, Selden Kelley, Henry Crawford, and Chick Klingman. Coaching the Alumni this year for the first time was James L. Rice.

The winning "O" Club was represented by: Dale Fruehling, Bob Medcalf, Jim Sumwalt, John Strahl, Carl Clendenen, Robert Clack, Leo Baugus, Kenneth Faust, Robert Keyes, and Virgil Nutt. Professor Jones capably coached the "O" Club to their first win.

The first annual Women's "O" Club-Alumnae game was won by the "O" Club by the score of 38-24. This addition to the Homecoming events gives promise to become traditional. Those representing the Alumnae and doing a great performance were: Mabel Rice, Jean Strahl, June Starr, Jane Arnold, Margie Howe, Betty Martin, and Wilma Shaw.

The winning Women's "O" team was represented by: Betty Fruehling, Donita Von Seggen, Lois Zackmire, Ruth Moriarity, Winnie Wilson, Wilma Leitsch, Jean Hershey, Betty Brown, Wilma Ostrander, Sally Gardner, and Donna Randolph. The Alumnae were coached by Wilma Shaw and the "O" Club by Donna Randolph.

Here are the lettermen of Olivet's athletic program. The society was founded in 1940 with the official name "O" Club. The purpose of this organization is to foster a higher type of Christian sportsmanship and increase the interest in the many athletic games at Olivet Nazarene College. Among the activities of this year's club has been the induction of new members, co-sponsorship of the Homecoming Tip-Off events, and the annual spring banquet.

Officers for the year were: President, Wayne Cooper; Vice-President, Dale Fruehling; Secretary-Treasurer, Raymond Gardner; and Faculty Adviser, Ronald D. Jones.

ATHLETIC SOCIETIES



SPARTANS: Bob Clack, Sally Gardner, Leo Baugus.



INDIANS: Chuck Oswalt, Donna Randolph, John Strahl.



TROJANS: Dale Fruehling, Donita Von Seggen, Henry Smith.

REFEREES

This year's intramural athletics have been the most interesting, and also, the most hotly-contested of any in the history of Olivet. Each society jockeyed for position in the opening softball season, and with all three societies acquiring the zeal and enthusiasm of their rookies, added to the steadiness of the veterans, made for a great season on the diamond. The capable leaders of our three athletic societies led their teams into the court games and the field events with the same effective guidance. Hats off to the leaders of the Indians: Oswald, Strahl, and Randolph; the Spartans: Clack, Baugus, and Gardner; and of the Trojans: Baker, Fruehling, and Von Seggen, for a most successful 1946-47 season.



Watson, Jenkins

MEN'S INDIAN SOFTBALL



First Row—John Strahl, Robert Griffith, Charles Oswalt, Jack Knighton, Virgil Nutt, Carl Clendenen.

Second Row—Clayton Wilson, Howard Martin, Floyd Gale, Don Burghorn, David Nielson, Charles Henderson, Bob Clendenen, Tom Clendenen.

Running away with the Men's title, the Indian Men were coached by "Chuck" Oswalt. They were sparked by the hitting of Donald Burghorn and the pitching of Bob Clendenen and Virgil Nutt. Five of their team made the All-Star squad.

WOMEN'S INDIAN SOFTBALL



First Row—Mary Shaffer, Geneva Sledd, Donna Randolph, Esther Gale, Nancy Conrad.
Second Row—Pearl Street, Mary Johnson, Jean Psaute, Lois Zachmire, Lena Potts.

Since the Women's softball league is continued from the autumn to the spring, no winner had been decided at the time we went to press. However, the Indians, who head the pack with four wins and no losses, were considered a good risk to win the title. Donna Randolph was coach of the team, which was sparked by the pitching of Lois Zackmire and the fielding of Mary Johnson.

MEN'S SPARTAN SOFTBALL



First Row—Robert Ferguson, Kenneth Foust, Leo Baugus, Ray Gardner, Lyle Akers.

Second Row—David King, John Jones, Ralph Hodges, Clarence Ward, Bob Clack, Sherrill Wellman, Mascot.

Last year's champs the Spartans, made a game fight to retain the crown, but were unsuccessful in their efforts. They lost three important decisions to the Indians and one other game to the Trojans, while defeating them twice. Their stars were Ray Gardner, Lyle Akers and Kenny Faust. Coach was Bob Clack.

WOMEN'S SPARTAN SOFTBALL



First Row—Sally Gardner, Ruth Moriarity, Winnie Wilson.

Second Row—Pat Monroe, Betty Brown, Margie Bradley, Marion Anderson.

Unable to win a game in the fall, the Spartans had hopes of bettering their four losses and no wins record. Sally Gardner is the coach.

MEN'S TROJAN SOFTBALL



First Row—Allen Rice, Virgil Applegate, Richard Crow, John Bundy.
Second Row—Bill Hess, Hardy Powers, Henry Smith, Dale Fruehling.

Finishing a good last, the Trojans managed to win only one game, that against the Spartans. Their coach was the former Indian, Henry Smith. Their one and only star was Moody Schoonover.

WOMEN'S TROJAN SOFTBALL



First Row—Ruth Bergin, Margaret Griswold, Donita Von Seggen, Rosalie Hoopes.

Second Row—Lois Gibson, Dwan Swank, Wilma Ostrander, Faith Ricker, Jean Wilson, Alma Brock.

Coached by Donita Von Seggen, the 'Trojans, with a two-and-two record, were ranked as possible repeaters in the league. The home-run hitting of Faith Ricker, the outfielding of Wilma Ostrander, and the pitching of Betty Fruehling were the main factors in the 'Trojans' two wins over the Spartans.

ALL-STAR SOFTBALL



First Row—Don Burghorn, Kenneth Foust, Leo Baugus, Ray Gardner, Virgil Nutt.
Second Row—Tom Clendenen, Lyle Akers, Moody Schoonover, Bob Clendenen, Carl Clendenen.

Taking five out of ten places, the Indians led all societies on the All-Star Softball Team.

Low batting averages that seemed so prominent in the league this year were laid mainly at the feet of Bob Clendenen and Virgil Nutt, the two pitchers on the team.

Moody Schoonover was the only Trojan representative. He hit a lusty .412 average.

Thomas Clendenen showed fine technique and try on every play as he gained the catching spot.

Ray Gardner showed his usual fine play at first and made several "miracle plays."

Leo Baugus came up with snappy plays and consistent ball handling as he took the shortstop position.

Connie Clendenen took good care of the "hot spot" for the champions and was fast on his throws to first.

Showing fine throwing power and making the baserunners wary of it were Kenneth Faust and Lyle Akers.

Don "Lefty" Burghorn had first place batting average of .625.

ALL-STAR TEAM

Infielders

Thomas Clendenen (Indians)
 Moody Schoonover (Trojans)
 Raymond Gardner (Spartans)
 Leo Baugus (Spartans)
 Carl Clendenen (Indians)

Outfielders

Kenneth Faust (Spartans)
 Donald Burghorn (Indians)
 Lyle Akers (Spartans)

Pitchers

Robert Clendenen (Indians)
 Virgil Nutt (Indians)

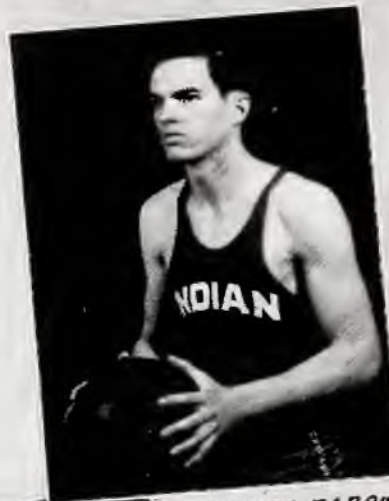
CHEER LEADERS



MEN'S INDIAN BASKETBALL



CHUCK OSWALT
- COACH -



JAMES FARRIS



BOB CLENDENEN



CARL CLENDENEN



FLOYD GALE



JOHN STRAHL

WOMEN'S INDIAN BASKETBALL



First Row—Naomi Harris, Betty Chevington, Mary Johnson, Dolores Jones, Lois Zachmire, Donna Randolph.

Second Row—Jean Psaute, Geneva Sledd, Lena Potts, Nancy Conrad.

DONNA RANDOLPH
Coach



MEN'S SPARTAN BASKETBALL



BOB CLACK-COACH



JOHN JONES



LEO BAUGUS



KENNETH FAUST



BOB WARD



RALPH HODGE

WOMEN'S SPARTAN BASKETBALL



First Row—Lorraine Switzer, Sally Gardner, Ruth Moriarity, Winnie Wilson, Lois Starr.
Second Row—Evelyn Duff, Pat Monroe, Avis Harshman, Betty Brown, Marjorie Bradley,
 Ruth Welsh, Marion Anderson.

SALLY GARDNER
Coach



MEN'S TROJAN BASKETBALL



HENRY SMITH - COACH



BILL HESS



DICK INGALLS



DALE FRUEHLING



JOHN BUNDY



VICK APPLEGATE

WOMEN'S TROJAN BASKETBALL



First Row—Donita Von Seggen, Carolyn Reese, Rosalie Hoopes, Wilma Leitsch, Alma Brock.
Second Row—Bernice Jorgensen, Faith Ricker, Wilma Ostrander, Dwan Swank, Ruth Bergin.

DONITA VON SEGGEN
Coach



THESE ADVERTISERS
HAVE HELPED US
BUILD

Commercially...

THEY ARE WORTHY
OF OUR PATRONAGE

CHICAGO CENTRAL DISTRICT

is backing

OLIVET
NAZARENE COLLEGE

with its

MONEY *and* PRAYER

DR. E. O. CHALFANT
District Superintendent

STUDENT ROSTER

A

Adam, Christian, 1267 E. Maple St., Kankakee, Ill.
 Akers, Lyle, Franklin, Nebr.
 Akers, Orval Wayne, 1326 16th St., Franklin, Nebr.
 Albertson, Ralph Thurman, 529 Flint St., High Point, N.C.
 Alison, Percy, Hugh, 151 West St., Plainfield, Ind.
 Allen, Pearl M., 295 S. Blaine St., Bradley, Ill.
 Allison, Frank Junior, 507 Jewell St., Danville, Ill.
 Alstott, Charles W. 507 Abe St., Joliet, Ill.
 Ambrosio, Josephine, R. R. # 1, Wilmington, Ill.
 Anderson, Loren Charles, 231 N. Logan St., Springfield, Ill.
 Anderson, Marion Fay, 11701 Cascade St., Detroit 4, Mich.
 Anderson, Norman Edward, R. R. # 4, Lancaster, O.
 Applegate, Virgil Paul, Ripley, O.
 Archer, Elizabeth, Newtonsville, O.
 Armstrong, Norma June, 26 Franklin St., Grand Haven, Mich.
 Arnold, Urey Burke, Jr., 216 Main St., N. W., Bourbonnais, Ill.
 Arnold, Wendell H., 745 S. Lincoln Ave., Kankakee, Ill.
 Asmussen, Esther Loella, 2310 Terminal Pr., Sioux City 18, Ia.
 Asbury, Fred M., 1615 Missouri Ave., E. St. Louis, Mo.
 Aspen, Lawrence Calmer, Box 12, Bourbonnais, Ill.
 Atkinson, Naomi Ruth, 615 W. Main, Richmond, Ind.
 Attig, Charlotte Alyce, R. R. # 3, Murphysboro, Ill.
 Attig, Martha H., 2943 Ave. Z., Birmingham, Ala.
 Attig, Walter W., 94 Marsail St., Bourbonnais, Ill.
 Austin, Faith Abigail, High St., Winchester, Ind.
 Axtell, Betty, 324 W. Main St., Cardington, O.
 Axtell, Catherine Hill, Von Oshen Rd., Summerville, S. C.
 Axtell, Lefa Laree, 324 West Main St., Cardington, O.
 Axtell, Ronald Fleet, 324 West Main St., Cardington, O.
 Ayers, Wilma Irene, R. R. # 6, Celina, O.

B

Bade, A. Emogene, 500 E. Maine St., Union, Mo.
 Bade, E. Richard, 379 S. Lincoln Ave., Kankakee, Ill.
 Bade, Kenneth Allen, 500 E. Maine St., Union, Mo.
 Bailey, Betty, R. R. # 2, Hoopeston, Ill.
 Bailey, Clayton Darle, 937 S. 27th St., Fort Dodge, Ia.
 Baker, Betty Lucille, 815 W. Hickory St., Union City, Ind.
 Baker, Paul Alfred, 24 Galloway St., Dayton 8, O.
 Baker, Leroy Rex, 1919 E. Main St., Shelbyville, Ill.
 Baker, Mary R., R. R. # 4, Celina, O.
 Baker, Monroe, 5575 Nottingham St., Detroit 24, Mich.
 Baker, Twyla Marie, 5575 Nottingham St., Detroit 24, Mich.
 Ball, Betty Jane, 530 N. Washington Ave., Kankakee, Ill.
 Ballmer, Verl Wayne, Box 44, Munson, Mich.
 Baldridge, Dale R., 1120 E. Leafland St., Decatur, Ill.
 Ballard, Douglas, 16th Commercial Ave., Chariton, Ia.

Barnell, Betty Joyce, 612 George St., Sturgis, Mich.
 Barbee, Regeana Delores, 308 W. Armstrong St., Frankfort, Ind.
 Barnard, Spencer Allen, Aroma Park, Ill.
 Barnes, Virginia Elizabeth, R. R. # 1, Waynesfield, O.
 Barnes, William Isaac, R. R. # 2, Franklin, O.
 Barrett, Joyce M., Box 298, Pioneer, O.
 Barrier, Edna Ethel, R. R. # 1, Greensfork, Ind.
 Bartram, Gladys E. L. 4020 E. English St., Wichita 8, Kans.
 Basham, Helen Bolander, 420 Marshall St., Portsmouth, O.
 Basham, Willard David, 5917 Harding St., Portsmouth, O.
 Basinger, Dorothy Alice, R. R. # 4, Box 61, Hannisburg, Ill.
 Bassett, Ellsworth Elias, Elkton, Mich.
 Bauerle, James Edward, 1128 W. Madison St., Ottawa, Ill.
 Bauerle, Ruth Elizabeth, 1128 W. Madison St., Ottawa, Ill.
 Baugus, Leo Dale, 1284 Oakland Park Ave., Columbus, O.
 Bearinger, Naomi Grace, 23089 Cayuga St., Hazel Park, Mich.
 Beaty, Bryan L., R. R. # 4, Taylorville, Ill.
 Beck, Mary Jean, 114 E. Highland Ave., Muncie, Ind.
 Bedell, June Elizabeth, 612 Lingle Ave., Owosso, Mich.
 Bedsworth, Barbara Lee, 3231 W. 42nd Ave., Kansas City 3, Kans.
 Benedict, Virginia, 1201 S. Park St., Hastings, Mich.
 Benge, Edward Marion, 803 Cleveland Ave., Hamilton, O.
 Bennett, William Robert, Box 195, Wheelersburg, O.
 Benson, Mary Craig, 8220 Homer St., Waycross, Ga.
 Berg, Charles, 45 N. River St., Bourbonnais, Ill.
 Bergeron, Hoan Mary, R. R. # 1, Bourbonnais, Ill.
 Bergin, Ruth Albright, 347 S. Wabash St., Bradley, Ill.
 Bergquist, Doris, R. R. # 1, Ogilvie, Minn.
 Berry, Maxine Geneva, Minie, Ill.
 Berry, Wilma Mae, 7647 Gerome, Maplewood 17, Mo.
 Beyer, Arlene Iola, Massbach, Ill.
 Bills, Joy Arline, Hale, Mich.
 Bird, Sylvester Joe, 320 S. 11th St., Hannibal, Mo.
 Blakley, Alma Fern, 1822 Main St., Vincennes, Ind.
 Blue, J. Douglas, 216 S. Crawford St., Troy, O.
 Bohne, Wayne E., E. Court St., Kankakee, Ill.
 Borden, Orville, 818 W. 11th St., Bloomington, Ind.
 Borden, Virgil William, 818 W. 11th St., Bloomington, Ind.
 Botner, Emmabelle, St. Bernice, Ind.
 Bourelle, Dean Nelson, R. R. # 1, Bourbonnais, Ill.
 Bourgeois, Helen Louise, R. R. # 3, Box 1, St. Anne, Ill.
 Bowers, Jacqueline, 409 E. Main St., Cridersville, O.
 Bowes, Alvin Ervin, 1004 W. Main St., Ottawa, Ill.
 Boyer, Wilma R., R. R. # 10, Indianapolis, Ind.
 Bradley, Floyd Clayton, Box 392, Bourbonnais, Ill.
 Bradley, Marjorie Louise, 2013 N. 21st St., Arlington, Va.
 Bradley, Ruth Alice, 197 Main St., Bourbonnais, Ill.
 Bragg, Carter C., 7641 W. 61 Pa. Ave., Argo, Ill.
 Brainerd, Mildred, 2714 Mack Rd., Saginaw, Mich.
 Braselton, Walter, 303 S. Main St., Princeton, Ind.

N. W. I. N. D.

DISTRICT

GEORGE J. FRANKLIN
Superintendent

N. Y. P. S.

HENRY E. HACKETT
President

*All Departments
Send Greetings To
Olivet Nazarene College
and the
Graduating Class of '47"*

W. F. M. S.

MRS. G. J. FRANKLIN
Pres.

SUNDAY SCHOOL

GRANT M. BARTON
Church Board Chairman

STUDENT ROSTER

(Continued)

Bredholt, Russell David, 68 Virginia Ave., Terrace, Pa.
 Briles, Jesse Obed, Av. 6 De Agosto N. 866 LaPaz, Bolivia, South America.
 Briles, Juana Romasa, Av. 6 De Agosto N. 866 LaPaz, Bolivia, South America.
 Brinkman, Roy Elkin, 314 S.E. 6th St., Ft. Lauderdale, Florida.
 Brock, Alma Leona, R. R. # 2, Box 336, Mt. Healthy 31, O.
 Brodien, Elmer Edward, Olivet College, Kankakee, Ill.
 Brodien, Ray Arthur, Olivet College, Kankakee, Ill.
 Bronson, Betty, 2074 N. Union St., Decatur, Ill.
 Brooks, Dorothy Gertrude, 18 Prospect St., Mt. Vernon, O.
 Brown, Betty Jean, 125 E. Walnut St., Canton, Ill.
 Brown, Betty June, 1743 Stanton Ave., Whiting, Ind.
 Brown, Clarence Warren, 1156 Harison Ave., Columbus, O.
 Brown, Mary Lou, 336 N. Pine St., Colorado Springs, Colo.
 Browne, Geraldine I., 125 Nichols St., Westville, Ill.
 Bruner, Dorothy, 8370 Holly Rd., Grand Blane, Mich.
 Bruning, Floyd Dene, Wright City, Mo.
 Bruning, Lloyd Gene, Wright City, Mo.
 Brunt, Russell William, Olivet College, Kankakee, Ill.
 Brush, Leslie Dale, 61 Center St., Mt. Gilead, O.
 Bryant, Alice L., 914 W. Padon St., Blackwell, Okla.
 Bryant, Clifford LaVerne, 2917 Avenue B., Council Bluffs, Ia.
 Bryant, Elvin Kenneth, 2917 Avenue B., Council Bluffs, Ia.
 Buck, David, Jr., 1097 W. Decatur St., Decatur, Ill.
 Buck, Irene, 107 E. Whitney St., Louisville, Ky.
 Buettner, Vivian Ruth, 2646 Grand Ave., Detroit, Mich.
 Bulla, Daniel H., No. Pitcher, N. Y.
 Buffington, Gwendolyn, 10851 S. Troy St., Chicago, Ill.
 Bundy, John Warren, 231 W. Church St., Cambridge City, Ind.
 Burchfield, Riley Earl, 1714 Grand Ave., New Castle, Ind.
 Burghorn, Donald Grant, R. R. # 1, Grand Haven, Mich.
 Burkley, Orlia Catherine, Payne, O.
 Burnside, Arthur U., 440 Grove St., Morgantown, W. Va.
 Burrington, Ernest Monroe, R. R. # 2, Bourbonnais, Ill.
 Burrington, Paul Fredrick, R. R. # 2, Bourbonnais, Ill.
 Burris, Donnis Paul, 306 Third St., Roscoe, O.
 Burton, Betty Ann, 17501 Asbury Park, Detroit, Mich.
 Bushey, Alideda Mae, 335 N. Forest St., Bradley, Ill.

C

Cable, Betty Marie, Grant Park, Ill.
 Cable, Paul Eugene, 2211 Indiana Ave., Newcastle, Ind.
 Cailey, Ruth M., Obetz Station, Columbus 7, O.
 Calvin, Fay Alene, Omaha, Ill.
 Calvin, Harold Russell Jr., R. R. # 3, Colombia, Mo.
 Calvin, Kenneth, R. R. # 2, Omaha, Ill.
 Campbell, Gerald Deray, 37 Prescott Rd., White Plains, N. Y.
 Canham, Marion Durwood, R. R. # 1, Kankakee, Ill.

Cardosi, Dorothy May, 1402 Cobb Blvd., Kankakee, Ill.
 Carey, Albert Frank, Box 138, Rensselaen, Ind.
 Carlson, Virginia Louise, 907 3rd Ave., Maywood, Ill.
 Carlton, Denton Leon, R. R. # 18, Box 577, Indianapolis, Ind.
 Carmony, Charlotte Ellen, Morristown, Ind.
 Carmony, Marvin Dale, Morristown, Ind.
 Carrico, Donald John, Southpoint, O.
 Carrico, Helen Mae, Southpoint, O.
 Cash, Noah Arnold, 315 Piercest St., Ridgeville, Ind.
 Caudill, Mickey Richardson, Crothersville, Ind.
 Chaffin, Ivan Lewis, 1425 N. 6th St., Columbus, O.
 Chalfant, Betty Jean, 471 S. Osborn Ave., Kankakee, Ill.
 Chambers, Elsie Irene, R. R. # 1, Galena, O.
 Chambers, Venetta L., 22 Lewis Ave., Billings, Mont.
 Chance, Ernest Leo, 371 N. Center St., Bradley, Ill.
 Chaney Joe, 311 E. McDollum St., Dexter, Mo.
 Chaney, Frederick Walter, 309 Troy St., Troy, O.
 Chase, Ruth Elizabeth, R. R. # 2, Eau Claire, Wis.
 Chilyer, Eloise Marie, 231 Morrison St., Grand Rapids, Mich.
 Chivington, Betty, 420 W. Harrison St., Paulding, O.
 Christian, Warren Munroe, Palos Park, Ill.
 Christian, T. Marcella, 220 Fifth Ave., N.E., St., Cloud, Minn.
 Chwala, Erwin Frank, Whittier St., Saginaw, Mich.
 Clack, Everett Wayne, 649 Lounsgury St., Pontiac, Mich.
 Clack, Robert Joseph, R. R. # 3, Sault Ste. Marie, Mich.
 Clapp, Ruth Leona, 346 W. Calthrop Ave., Syracuse, N. Y.
 Clemenets, Howard Frederick, 317 Center St., Cardington, O.
 Clendenen, Carl Burton, 111 E. Canal St., Troy, O.
 Clendenen, Robert Vance, 111 E. Canal St., Troy, O.
 Clendenen, Thomas Nelson, 111 E. Canal St., Troy, O.
 Clerico, Irene T., 1417 Nevada St., Flint, Mich.
 Clerico, John Steve, 1417 Nevada St., Flint, Mich.
 Clingan, Vivian Geraldine, R. R. # 1, Mansfield, O.
 Clipson, Paul Junior, 377 S. Greenwood Ave., Kankakee, Ill.
 Clupper, Paul Ray, Elliotte St., Los Angeles, Calif.
 Cobb, Allen Elsworth, R. R. # 4, Nidland, Mich.
 Cobb, Carolyn Thera, 3716 N. Berkley Circle, Silverton, O.
 Cobb, Janice Winnifred, 1010 Bluff St., Waterloo, Ia.
 Cobb, Louis Willard, R. R. # 4, Medland, Mich.
 Coda, Robert Louis, 1812 W. Station St., Kankakee, Ill.
 Cody, Alberta B., 407 E. Jefferson St., Frankfort, Ind.
 Cody, Emmett M., 407 E. Jefferson St., Frankfort, Ind.
 Coyswell, Bryon, Lee Roy, Mich.
 Coil, Kenneth Lamarr, 942 E. 4th St., Mishawaka, Ind.
 Cole, Lucille Irene, 230 N. Maple St., Eaton, O.
 Collins, Mary Elizabeth, 216 S. Main St., Hattiesburg, Miss.
 Collins, Pearl Ruth, 14 Bernard St., Bourbonnais, Ill.
 Collins, Samuel Joseph, Box 93, Star City, W. Va.
 Collins, Vendetta Mae, 14 Bernard St., Bourbonnais, Ill.
 Colyar, Willma June, Tydemen St., Roxanna, Ill.



Harris B. Anthony, Minister
RA. 1441

Warren Avenue Church of the Nazarene

642 South Warren Avenue
COLUMBUS, OHIO

The Evangelistic Church



OUR NEW CHURCH BUILDING TO BE CONSTRUCTED AS SOON AS MATERIALS
ARE AVAILABLE. THE AUDITORIUM WILL SEAT ONE THOUSAND.

STUDENT ROSTER

(Continued)

- Conrad, James Abraham Jr., 208 McKinley St., Middletown, O.
 Conrad, Nancy Ann, 208 McKinley St., Middletown, O.
 Cook, Audrey Crane, 159 N. Cleveland Ave., Bradley, Ill.
 Cook, Betty Ruth, 226 W. Walcott St., Indianapolis, Ind.
 Cook, Charles T., Clarence, Mo.
 Cook, Dudley M., 159 N. Cleveland St., Bradley, Ill.
 Cook, Paul Leroy, 226 N. Walcott St., Indianapolis, Ind.
 Coolidge, Ardee Burr, R. R. # 1, Wisconsin Dells, Wis.
 Coolidge, Calvin Herman, R. R. # 1, Wisconsin Dells, Wis.
 Coomer, Charlotte Adelaide, 730 S. Franklin St., Oakland City, Ind.
 Coomer, Hazel A. 730 S. Franklin St., Oakland City, Ind.
 Coomer, Laura Pearl, 730 S. Franklin St., Oakland City, Ind.
 Cooper, Aubrey Emmett, 4906 N. W. 15 Court St., Miami, Fla.
 Cooper, Margoric, R. R. # 1, Hillsboro, Ind.
 Cooper, Wayne Lough, 136 Main Ave., Bourbonnais, Ill.
 Cornett, Eldon, Star Route, Oldenburg, Ind.
 Correll, George Francis, 10902 Hermosa Ave., Chicago, Ill.
 Courtney, Mae, 309 S. Chicago Ave., Kankakee, Ill.
 Covell, Helen Irene, 4432 Sunnyside St., Bollkfield, Ill.
 Cox, Theodore R., 3370 N. Enclid St., Indianapolis, Ind.
 Cox, Vera Patricia, 3370 N. Enclid St., Indianapolis, Ind.
 Cox, Walter Lowell, 2080 W. Station St., Kankakee, Ill.
 Cox, Raymond David, 555½ S. Alma Ave., Kankakee, Ill.
 Coyle, James, 529 Lublow St., Hamilton, O.
 Crabtree, James Carlton, 435 S. Popular St., Kankakee, Ill.
 Craig, Bessie York, Olivet College, Kankakee, Ill.
 Craig, Bobby, 324 N. Forest St., Bradley, Ill.
 Craig, David Eugene, 324 N. Forest St., Bradley, Ill.
 Craig, Gladys Stamper, R. R. # 1, Hamersville, O.
 Crane, Pearle Audry, Three Rivers, Mich.
 Cremeans, Helen Juanita, 1225 Linden Ave., Portsmouth, Ohio.
 Crites, Elayne L., 43 Rivard St., Bourbonnais, Ill.
 Crites, Leonard M., 43 Rivard St., Bourbonnais, Ill.
 Crocker, Benniett John, R. R. # 3, Saginaw, Mich.
 Crook, Wanda, Olivet, Ill.
 Crose, Evelyn, R. R. # 5, Frankfort, Ind.
 Cross, Wilma Jean, 8889 Cloverlawn St., Detroit 4, Mich.
 Crow, Richard Ray, 1122 East Washington St., Iowa City, Iowa.
 Crummer, Ernest R., R. R. # 1, Bourbonnais, Ill.
 Csolkovits, Margaret, 431 Barlos St., Traverse City, Mich.
 Culbertson, Violet, 42 Eurnace St., Logan, O.
 Cunningham, Betty Jean, 6117 S. Green St., Chicago 21, Ill.
 Cunningham, Dwight Allen, 88 Pierce St., New Bedford, Massachusetts.
 Curtis, Glenna Joy, 1710 S. Logan, Lansing, Mich.
- D
- Dabill, Florence, R. R. # 1, Birnamwood, Wis.
- Dablemont, Myrtle Doris, 4249 Castleman Ave., St. Louis, 10, Missouri.
 Daffoe, Raymond Dale, 109 N. 5th St., Grand Haven, Michigan.
 Dalton, Robert Darrell, 136 Hagenbauch, Urbana, O.
 Darter, Joe Raymond, 897 S. Myrtle Ave., Kankakee, Ill.
 Davenport, Elmer B., 602 S. Oak St., Buchanan, Mich.
 David, Royal Frank, R. R. # 3, Mason, Mich.
 Davidson, John R., 920 Shelby St., Effingham, Ill.
 Davidson, Sarah Breedon, 904 S. 4th Ave., Kankakee, Ill.
 Davis, Darrell Lytton, 1245 E. Maple St., Kankakee, Ill.
 Davis, Grace, Newtonsville, O.
 Dawson, Naomi Virginia, Culver St., Logan, O.
 Dawson, Russell E., 197 Main St., Bourbonnais, Ill.
 Deal, Eneroh W., 245 N. Main St., Bourbonnais, Ill.
 Deale, Virginia, 1171 E. Howard St., Pasadena, Calif.
 DeBoard, Velma Irene, 15115 Pauline St., Harvey, Ill.
 Dennis, Julia Kathryn, R. R. # 1, Shelbyville, Ind.
 Dennis Lawrence Ariel, 395 N. Forest St., Bradley, Ill.
 Dershem, Lowell Jerome, 43 Orchard St., Englewood, O.
 DeWeese, Robert Frank, 205 W. Chestnut St., Kankakee, Illinois.
 DeWitt, Thelma Vivian, Oskaloan, Iowa, R. R. # 1.
 Dickerson, Harry W., 1531 Ohio St., Indianapolis, Ind.
 Dillman, Beryl R., W. Main St., Arcola, Ill.
 Dillman, Craig Rhorer, 271 N. Blaine, Bradley, Ill.
 Docter, Delmer M., 1729 5th St., Mushegon Ht., Mich.
 Dole, Walter Dwight, 2554 Houard St., Omaha, Nebr.
 Donaldson, Donna Lou Katherine, 738½ N. Elizabeth St., Lima, O.
 Donson, Earl H., 3119 S. Walnut St., Muncie, Ind.
 Doss, Eatle Herbert, Burge St., Bourbonnais, Ill.
 Doud, Harvey Edward, 4398 Marlborough St., Detroit 24, Michigan.
 Downs, Betty E., R. R. Thomasboro, Ill.
 Duff, Evelyn Jessie, 1643 Marquette St., Detroit, Mich.
 Duffie, Murrell Loren, 1343 Marquette St., Detroit, Mich.
 Duley, Gladys Mae, R. R. # 5, Rensselaer, Ind.
 Duley, Russell Roy, R. R. # 5, Rensselaer, Ind.
- E
- Early, James Franklin, 1044 Dennison Ave., Columbus, O.
 Easley, Betty, 137 George St., Lindlay, O.
 Ebert, Mary Ellen, R. R. # 1, Marshall, Ind.
 Ehrlin, David Konrad, Oakes, N. D.
 Ehrlin, H. Klarence, Oakes, N. D.
 Eigsti, Robert Eldon, 1331 N. Burlington Ave., Hastings, Nebraska.
 Eisenmann, Esther Jean, 8538 Secor Rd., Temperance, Michigan.
 Ellwanger, Dorothy M. 1864 Sunnybrook Dr., Cincinnati 15, Ohio.
 Ellwanger, R. Jeanette, 1864 Sunnybrook Dr., Cincinnati 15, Ohio.
 Emaniser, Florence Elizabeth, 5462 Fern Dr., Toledo, O.

The Illinois District

GOING FORWARD

Our purposes are permanent

Our plans are progressive

Our resources are reassuring



ROY V. STARR
District Superintendent

We believe in, and support

Olivet Nazarene College.

The world needs its product.



JACK H. WHITE
N.Y.P.S. President

STUDENT ROSTER

(Continued)

Endsley, Elizabeth S., R. R. # 1, Carlock, Ill.
 Endsley, Charles Elmer, Carlock, Ill.
 Endsley, Patricia E., R. R. # 1, Carlock, Ill.
 Endfield, Wayne Marquis, 743 N. Chicago St., Pontiac, Ill.
 Engbrecht, Henry, 417 18th St., West Prince Albert, Sask.
 Engeman, Beverly June, North Redwood, Minn.
 Engeman, Ruth Earline, 504 S. Mill St., Redwood Falls, Minnesota.
 Enoch, Lois M., R. R. # 1, Akron, Ia.
 Enoch, Victor R. 384 N. Forest St., Bourbonnais, Ill.
 Ensley, Doris Irene, 200 High Street, Kewanee, Ill.
 Ethington, Oakley V., 16 Bernard St., Bourbonnais, Ill.
 Evans, David L., R. R. # 1, Box 379, New Lebanon, O.
 Evans, Evelyn E., Ellsworth, Mich.
 Evans, John Frederick, 837 E. Madison St., Danville, Ill.
 Everett, Helen Frances, 8280 Epworth Blvd. # 115, Detroit 4, Mich.
 Everett, Ruth Mae, 8280 Epworth Blvd., Detroit, Mich.

F

Fancher, Edgar Earl, 1418 Center St., Lansing, Mich.
 Farley, Robert Norman, 293 E. Locust St., Kankakee, Ill.
 Farmer, Charles Franklin, 176 N. Washington St., Bradley, Ill.
 Farmer, Gertrude Violet, 176 N. Washington St., Bradley, Illinois.
 Farmer, Virginia, 176 N. Washington St., Bradley, Ill.
 Farris, James William, 197 Main St., Bourbonnais, Ill.
 Fawthrop, J. Norman, 1152 S. Elm Ave., Kankakee, Ill.
 Fearn, Daniel, 5331 Holcomb St., Detroit 13, Mich.
 Featherston, Ronald Russel, 5939 Park Ave., Indianapolis, Indiana.
 Fehr, John Fred, 256 S. Harrison St., Kankakee, Ill.
 Ferguson, Erle Harley, 204 Carlton Cysts, Prince Albert, Sask. Can.
 Ferguson, Esther Eleanor, 57 Brant Ave., Brantford, Ontario, Canada.
 Ferguson, E. Robert, 57 Brant Ave., Brantford, Ontario, Canada.
 Fiedler, Dean Allen, R. R. # 1, Charlevoix, Mich.
 Fiedler, Mark Raymond, R. R. # 1, Charlevoix, Mich.
 Fiedler, Robert Carroll, R. R. # 1, Charlevoix, Mich.
 Flaughner, Jewell Vivian, 1332 Center St., Portsmouth, O.
 Foote, William George, R. R. # 1, Baileys Harbor, Wis.
 Forinash, Laura Amelia, 1229 Hamlet St., Columbus, O.
 Forkel, Gladys, Merritt, Mich.
 Forkel, Robert Charles, 810 Vankirk St., Clairton, Pa.
 Foster, Alfred Daniel, 117 W. 14th St., Danville, Ill.
 Foster, Jay Emanuel, 993 S. Indiana St., Kankakee, Ill.
 Foust, Flora Bessie, Anderson, Indiana R. R. # 7.
 Foust, Kenneth Elmer, Anderson, Indiana, R. R. # 7.
 Fox, Charles L., Laurld, Ind.
 Fox, Donald, 1432 E. State St., Mason City, Ia.
 Fox, Peggy Lou, 423 6th N. W. Mason City, Ia.

Franklin, Mary Elizabeth, Greenbush, Ill.
 Frederick, Frances Verna, 1133 E. Market St., Apt. # 9, Indianapolis, Ind.
 Freeman, Grace LaVera, Clay City, Ind.
 Freise, Lucy, 1130 W. Merchant St., Kankakee, Ill.
 Frost, Earl Lewis, 405 Troy St., Troy, O.
 Fruehling, Betty Allen, Bourbonnais, Ill.
 Fruehling, Max Foust, Montrose, Ia.
 Fruehling, Robert Dale, Montrose, Ia.
 Fry, Clarence F., 42 Marsile Ave., Bourbonnais, Ill.
 Frye, Alva, Jr., R. R. # 2, Gosport, Ind.
 Frye, Joyce Daisy, 1015 Benton St., Rockford, Ill.
 Fugate, Harrison L., 412 Bell Brook Ave., Xenia, O.
 Fullen, Geneva Louise, Box 54, Olivet, Ill.
 Fullerton, Richard Lee, 613 S. Sheldon St., Charlotte, Michigan.
 Fulmer, Wanda Mae, 403 S. Water St., Loudonville, O.
 Fulton, Robert James, R. R. # 1, Box 32, Williamston, Michigan.

G

Gale, Esther Marie, Summit St., Alliance, O.
 Gale, Floyd David, 344 E. Summit St., Alliance, O.
 Gamertsfelder, Paul Wesley, 1119 Adams St., Coshocton, Ohio.
 Gardner, Earl Leroy, 3026 10th Ave., Rock Island, Ill.
 Gardner, Elaine Charlotte, 90 Marsile, Bourbonnais, Ill.
 Gardner, Raymond V., 1440 High St., Hamilton, O.
 Gardner, Sally, 1440 High St., Hamilton, O.
 Garner, Blanche Isabella, 99 Main St., Bourbonnais, Ill.
 Garvin, Bette Mae, 1007 Ross Ave., Hamilton, O.
 Gee, Ruby Jean, 510 N. Douglas St., Malden, Mo.
 Gelcan, Helen Irene, Walnut, Ill.
 Gennaro, Betty Jean, 5956 Columbia St., St. Louis, 9, Mo.
 Gennaro, Vincent Jr., 5956 Columbia St., St. Louis, Mo.
 Gennaro, Wauneta Maxine, Enders, Nebr.
 Gibson, Lois Laura, R. R. # 1, St. Charles Ill.
 Gierke, Irene A., 532 1/2 S. Poplar St., Kankakee, Ill.
 Gilbert, Don Clifford, 102 N. Grove St., Walbudge, O.
 Ginn, Lila Jean, 2063 N. Tacoma St., Indianapolis, Ind.
 Goble, Forrest Calvin, 5747 Erie Ave., Hammond, Ind.
 Godman, UB 937 Pallister St., Detroit, Mich.
 Goin, Hanson, 412 N. Blaine St., Bradley, Ill.
 Goodall, Gladys, Chesapeake, O.
 Goodall, Haven Lloyd, 1195 Wilson Dr., Kankakee, Ill.
 Goodwin, Betty E., 67 E. Dunedin Rd., Columbus, O.
 Goodwin, Jack H., 67 E. Dunedin Rd., Columbus, O.
 Gose, June Eileen, 85 N. Pine St., Newark, O.
 Gotschall, Ella, 134 N. Bronson St., Marion, Ind.
 Gough, Joseph Jeremiah, Center St., Freeport, Ill.
 Gould, Arland Dewey, 44 Bradley St., Concord, N. H.
 Gould, Jay Wilber, 712 Woonbridgest St., Saginaw, Mich.
 Grabill, Bonnie Jane, 1706 Lane Ave., Dayton 7, O.

COMPLIMENTS

Western Ohio
District

CONGRATULATIONS

CLASS OF

'47

ADVISORY BOARD

Rev. M. R. Fitch
Rev. H. C. Watson
Ira Jones
H. J. Bolander

DISTRICT TREASURER

Rev. M. R. Fitch

DISTRICT SECRETARY

Rev. C. L. Henderson



W. E. ALBEA
District Superintendent

STUDENT ROSTER

(Continued)

Gragg, Irene Annetta, 4029 Delahos Ave., Kankakee, Ill.
 Grasser, Robert Russel, 432 S. Poplar Ave., Kankakee, Ill.
 Gray, Marjorie Marian, 109 Main St., Bourbonnais, Ill.
 Gray, Pearl Imojean, 10430 Lippincott Blvd., Davison, Michigan.
 Gray, William Glen, 109 Main St., Bourbonnais, Ill.
 Greek, Carl Edwin, 23 W. 23rd St., Anderson, Ind.
 Green, Rae Les Vogine, 423 6th St., Mason City, Ia.
 Green, Raymond Earl, 331 N. 70th St., Wauwatosa, Wis.
 Gregory, Paul Wendell, Coldwater, Mo.
 Griffin, Dorothy Maxine, D-2 Burke St., Bourbonnais, Ill.
 Griffin, Robert Lewis, Bourbonnais, Ill.
 Griffith, Clarence Leroy, 430 S. Myra St., Worthington, Indiana.
 Griffith, Donald, 2912 S. 8th St., Shelbyville, Illinois.
 Grim, Earl Rulism, 412 S. Cleveland St., Bradley, Ill.
 Grimshaw, Eileen Wellman, Dorm Annex-Chef's Apt., Bourbonnais, Ill.
 Grimshaw, Harry Edwin, Bourbonnais, Ill.
 Grisa, Mildred Frances, 801 Center Ave., Merrill, Wis.
 Grisham, Hazel, 8 Shaw St., Harrisburg, Ill.
 Griswold, Margaret Ruth, Lansing, Mich.
 Gunnels, Mary Edna, 811 Birch Ave., Indianapolis, Ind.

H

Habegger, Mary E., R. R. # 1, Geneva, Ind.
 Hacker, Melba Joan, R. R. # 9, Huntington, Ind.
 Haffner, Margaret Madonna, 302 N. Hackley St., Muncie, Indiana.
 Haldaman, Mary, 925 E. Market St., Enid, Okla.
 Hall, Virgie Irene, S. Water St., Albany, Ind.
 Hammer, Ramon Joyce, Jr., 10122 S. Union Ave., Chicago, Ill.
 Hand, John, R. R. # 2, Akron, Ind.
 Hanesworth, Harold Hudson, 1329 N. Wabash St., Kokomo, Ind.
 Hankins, Leroy Johnson, R. R. # 2, Kankakee, Ill.
 Hard, Lela Mae, 743 S. Poplar Ave., Kankakee, Ill.
 Hard, Warren, 743 S. Poplar Ave., Kankakee, Ill.
 Hardin, Harry A., Bourbonnais, Ill.
 Harris, Mary Elizabeth, Spring St., Cincinnati, O.
 Harris, Naomi Elaine, 810 S. College St., Springfield, Ill.
 Harris, Ruth Helen, 186 Main, Bourbonnais, Ill.
 Harsh, Paul Eugene, 383 S. Market St., Galion, O.
 Harsha, Robert William, 680 N. Greenwood St., Kankakee, Illinois.
 Harshman, Avis Joy, Elk Mound, Wis.
 Harshman, Dona Marie, Griggsville, Ill.
 Harshman, May Elizabeth, R. R. # 2, Lynn, Ind.
 Harshman, Virginia Ann, Griggsville, Ill.
 Harvey, Dale Roger, 1226 Engle St., Detroit 14, Mich.
 Harvery, Paul Ozie, 405 E. Point St., East Point, Ga.
 Hasbargen, Arthur, Jr., 333 Winfield Ave., Kankakee, Ill.
 Hatfield, Glen Jr., 717 E. Jefferson St., Kokomo, Ind.

Hatton, James E., 719 Maule St., Columbus, Ind.
 Hausmann, Marie W., 632 N. Central St., Gilman, Ill.
 Hawkins, Marion D., 220 S. Greenwood Ave., Kankakee, Illinois.
 Hawkins, Priscilla Goult, 22 Lewis Ave., Billings, Mont.
 Hawkins, Ray John, 190 W. 26th St., Chicago Heights, Illinois.
 Hazzard, Charlotte Frances, Bourbonnais, Ill.
 Heldenbrand, Lucille Helen, 255 Remy Ave., Mansfield, O.
 Helopoulos, Sporo, 165 N. Greenwood St., Kankakee, Ill.
 Henderson, Charles L. Jr., 3441 Evanston St., Cincinnati 7, Ohio.
 Henderson, Paul Eugene, 485 Rosewood St., Pontiac 4, Michigan.
 Hendricker, Phyllis M., R. R. # 2, Arnzville, Ill.
 Hendricks, Robert Albert, 36 N. Randolph St., Indianapolis, Ind.
 Herman, Dean E., Marengo, Ia.
 Herrell, Noah Benjamin, 1514 Cass St., Ft. Wayne, Ind.
 Hershey, Jeanne Naomi, 508 E. Jefferson St., Valparaiso, Indiana.
 Hesler, Paul Adolph, 1442 Spring Lawn Ave., Cincinnati, Ohio.
 Hess, Charles William, 415 Robinson St., Danville, Ill.
 Hetzer, Alice G., 131 Farmside Drive, Dayton, O., Zone 10.
 Hieftje, James Louis, 2089 Addison St., Muskegon, Mich.
 Higgins, Hiram Wendell, R. R. # 1, Shelbyville, Ind.
 Higgins, Marjorie Marie, R. R. # 1, Shelbyville, Ind.
 Higgins, Nadine, Box 194, Morristown, Ind.
 Hill, Francis Ray, 981 S. 5th Ave., Kankakee, Ill.
 Hillman, Alice Evangeline, Ellsworth, Mich.
 Hines, Anna Margaret, 97 McMillen Ave., Columbus 1, O.
 Hock, Robert Ervie, 1308 W. Station St., Kankakee, Ill.
 Hodge, Paul Bresee, 417 Lawrence St., Benton, Ill.
 Hodge, Ralph Jr., 417 Lawrence St., Benton, Ill.
 Hodges, John Wesley, Kankakee, Ill.
 Holcomb, Warren Ellis, 454 E. Fair St., Kankakee, Ill.
 Holland, Eunice Darlene, Gilman, Ill.
 Holland, John Monty, 358 E. Locust St., Kankakee, Ill.
 Holle, George Joseph, R. R. # 1, Gary, Ind.
 Holley, Cleveland Donald, 308 N. Jasseur St., Bradley, Ill.
 Holly, Floyd E., R. R. # 1, Camden, Mich.
 Holstein, John Theodore, Ethel, W. Va.
 Holt, Grace O., 330 S. Rosewood, Kankakee, Ill.
 Holtzclaw, Paul Madison, Carmi, Ill.
 Honaker, James L., Kankakee, Ill.
 Honaker, Lora Wright, Wheelersburg, O.
 Hoopes, Rosalie Jeanette, 1509 11th Spt. 7, Des Moines, Ia.
 Hoots, Nellie Ruth, 1575 Florence Ave., Galesburg, Ill.
 Horner, Leone, R. R. # 3, Racine, Wis.
 Horner, Richard A., R. R. # 1, Box 21, Racine, Wis.
 Horton, Mary A., R. R. # 3, Winchester, Ky.
 Houck, Jerome S., 223½ S. Cleveland St., Bradley, Ill.
 Hough, Donald W., 435 S. Poplar St., Kankakee, Ill.
 Houghtaling, Ruth, Box 238 Cass City, Mich.



MARY GAMERTSFELDER
N.Y.P.S. President



CHURCH OF THE NAZARENE
Coshocton, Ohio



WILLIAM F. CLAY
Minister

Greetings To
The Class of '47'
AND THE STUDENT BODY
FROM COSHOCTON, OHIO

First Church of the Nazarene

Stone and Union Streets
SAGINAW, MICHIGAN

ALVIN H. KAUFFMAN, M.A., Pastor

When in our city, give us a visit.



Church of the Nazarene
Marshfield Avenue at 153rd Street
HARVEY, ILLINOIS
C. I. DeBOARD, Pastor

Valparaiso Nazarene Church

THE FRIENDLY CHURCH
IN INDIANA

Greetings to - - - -

Olivet Nazarene College
and

Class of "47"

Congratulations To
The Class of '47

MAY GOD BE WITH
YOU THROUGH LIFE

**N. Y. P. S. of the
Brazil Church
of the Nazarene**

REV. J. M. FARGO
Pastor



STUDENT ROSTER

(Continued)

Howald, John Jr., Olivet, Ill.
 Howard, Pauline, 125 Holland Court, Creve Coeur, Ill.
 Howie, Dale Talmadge, 309 E. Fairchild St., Danville, Ill.
 Hubartt, Leonard Grant, 338 N. 8th Ave., Kankakee, Ill.
 Hubartt, Paul Leroy, 176 W. Station St., Kankakee, Ill.
 Hubartt, Phyllis Hacker, 338 N. 8th Ave., Kankakee, Ill.
 Hubble, Robena Estella, 67 9th Ave., Beech Grove, Ind.
 Huffman, M. Katherine, 4 N. Walnut St., Colorado Springs, Colo.
 Hughes, Harry J., 247½ N. Forest St., Bradley, Ill.
 Hughes, Marjorie Marie, 1004 First St., Midland, Mich.
 Hunt, Byron Maurice, 411 West 11th St., Auburn, Ind.
 Hunt, Charles Edwin, R. R. # 1, Elyria, O.
 Hunt, Louise Lillian, R. R. # 1, Elyria, O.
 Hurt, William Franklin, R. R. # 4, Box 485, Indianapolis 44, Indiana.
 Huston, Maudie Isabella, Junction City, Ohio, R. R. # 1.

I

Ingalls, Adam M., 335 Forrest Ave., Bradley, Ill.
 Ingalls, John Eldon, 203 Astor St., Des Moines, Ia.
 Ingalls, Richard W., 203 Astor St., Des Moines, Ia.
 Ivy, Juanita, Montene, Ill.

J

Jackson, Dale Robert, 326 N. Sevope St., Greenfield, Ind.
 Jackson, Jessie Jean, R. R. # 4, Salem, Ill.
 Jackson, Marie Naomi, 1420 Wheeler St., Vincennes, Ind.
 Jackson, William Ross, 1111 Birlingame St., Detroit, Michigan.
 James, Robert Edward, 245 Main St., Bourbonnais, Ill.
 James, Robert George, 1834 Cobb Blvd., Kankakee, Ill.
 Jarnagin, John Robert, 502 S. Main St., Bicknell, Ind.
 Jaymes, Richard William, Burnt Cabins, Pa.
 Jeffries, Mary Linda, 46 N. 21st St., Newark, O.
 Jenkins, Gerald Edward, 4767 Thrush Ave., St. Louis, Mo.
 Jenkins, Veryl William, Springfield, Ohio, R. R. # 6.
 Jilbert, Kenneth Noble, 1105 N. California St., Burbank, California.
 Jilly, Ralph Fred, 419 Baltimore St., Wilmington, Ill.
 Johnson, Elda Louise, 512 Third Ave., Ottawa, Ill.
 Johnson, James Roemer, Box 255, Chebanse, Ill.
 Johnson, Louella Marie, 308 N. Vasseur St., Bradley, Ill.
 Johnson, Mary Elizabeth, Box 255 Chebanse, Ill.
 Johnson, Roberta Kay, 484 S. Elm Ave., Kankakee, Ill.
 Johnson, Phyllis Florence, 694½ N. Greenwood Ave., Kankakee, Ill.
 Johnson, Velma Eileen, R. R. # 2, Lynn, Ind.
 Jones, Clara Irene, 1522 Chapman Ave., Roanoke, Va.
 Jones, Dolores Bernice, 2326 Ida Drive, Toledo, O.
 Jones, Harold Paul, 1704 1st St., Moundsville, W. Va.
 Jones, John Y., 449 E. Division St., Decatur, Ill.
 Jones, Lanona Lee, Milford, Ill.
 Jones, Lyle Lestie, Richland Center, Wis.

Jones, Ruth Frances, 161 Westmount Ave., Toronto Ontario, Canada.
 Jones, Wayne Edward, 449 E. Division St., Decatur, Ill.
 Jorgensen, Bernice A., 3551 Lemoyne St., Chicago, Ill.
 Jory, Neta Jane, 6093 Brobeck St., Flint, Mich.

K

Kanmann, William John, 768 S. Osborn Ave., Kankakee, Illinois.
 Kauffman, Corinne Elizabeth, 915 Genesee, Saginaw, Mich.
 Kauffman, Joyce Marie, 833 W. Frank St., Caro, Mich.
 Keeler, Lulu Catherine, Willow Hill, Ill.
 Keene, Hazel Elizabeth, St. Clair, Mo.
 Keeslar, Beverly Elaine, R. R. # 1, 437 Sturgis Rd., Burr Oak, Mich.
 Keiser, Jay Harold, 235 N. Wildwood Ave., Kankakee, Illinois.
 Keller, Dwight DeWitt, 423 Livingston St., Grand Rapids, 3, Michigan.
 Keller, William C., 475 N. Cleveland, Bradley, Ill.
 Kelly, Harl G., 1016 Ash St., Lawrenceville, Ill.
 Kelly, Mary Louise, 3318 Hillcrest Ave., Alton, Ill.
 Kempen, Leonille, St. Anne, Ill.
 Kendall, Paul James, 1311 Huffman Ave., Dayton 3, O.
 Kennedy, Naomi Ruth, 110 Mechanic St., Fort Wayne, Indiana.
 Kerr, Maxine Boyd, 371 N. Center St., Bradley, Ill.
 Kerr, Theodore Martin, 371 N. Center St., Bradley, Ill.
 Ketteson, Madice L., 239 Minnie St., Crystal Lake, Ill.
 Ketterman, Edith Viola, R. R. # 5, Box 600, Valparaiso, Indiana.
 Keyes, Charles C., 1007 3rd St., S. W. Cedar Rapids, Ia.
 Keyes, Lillian, 1007 3rd St., S. W. Cedar Rapids, Ia.
 Keyes, Rosemary G., 1164 Neel Ave., Columbus, O.
 Keys, Samuel Robert, 2275 Walnut St., New Castle, Ind.
 King, David M., 2004 Kearns Ave., Pittsburgh, Pa.
 Kinsey, Mildred, 136 Main St., Bourbonnais, Ill.
 Kirkpatrick, Theora, R. R. # 1, Beloit, Wis.
 Kitt, Katherine Louise, 212 Second St., Smyrna Beach, Florida.
 Klink, Betsy Jean, Hotel Hanford, Mason City, Ia.
 Klink, Ida Mae, Hotel Hanford, Mason City, Ia.
 Klink, Virginia, Mt. Prospect, Ill.
 Knighton, Geraldine, 6645 S. Stewart Ave., Chicago, Ill.
 Knighton, John David, 6645 S. Stewart Ave., Chicago 21, Illinois.
 Knecht, Joseph Edward, 815 S. Poplar St., Kankakee, Ill.
 Knisely, Evabelle, R. R. # 1, Fayette, O.
 Knisley, Philip, R. R. # 1, Bainbridge, O.
 Kolstad, Virginia Dawn, 214 N. Michigan St., Eau Claire, Wisconsin.
 Kotek, Phyllis Charlotte, 201 W. Madison St., Danville, Illinois.
 Koth, Harlow, George, Ia.
 Knowles, Robert Elwood, 902 S. 28th St., Lafayette, Ind.



REV. E. ATKINSON
Pastor

First Church of the Nazarene

NORTH FIFTH STREET AT A.

RICHMOND, INDIANA

OLIVET NAZARENE COLLEGE

has the prayerful interest of our Church
for its continued progress.



FIRST CHURCH of the NAZARENE

ETNA AT HENRY

HUNTINGTON, INDIANA

PASTOR AND PEOPLE
EXTEND

SINCERE BEST WISHES
FOR THE CLASS OF '47

FRED J. HAWK, Pastor



CHAS. L. HENDERSON
Minister
3441 Evanston Ave.
Ph. WO-1890

STANTON AVENUE Church of the Nazarene

Stanton Ave. at Wm. H. Taft Rd.

WALNUT HILLS, CINCINNATI 6, OHIO

YOURS TO SERVE

■ ■ ■



BEST WISHES
FOR
THE CLASS OF
1947

WHEN IN CINCINNATI, WORSHIP WITH US

STUDENT ROSTER

(Continued)

Kraft, Virginia Mae, 5512 Nall Ave., Massion, Kans.
Kruse, Clemens George, Olivet College, Kankakee, Ill.

L

Ladman, Elsie Mae, Esther, Mo.
Ladman, George Clifford, Esther, Mo.
Lain, Charles Winfield, 666 N. Harrison Ave., Kankakee, Illinois.
Lain, Philip Jackson, 666 N. Harrison Ave., Kankakee, Illinois.
Langman, Sol Lawrence, 641 E. Chestnut St., Kankakee, Illinois.
LaPorte, James Arthur, 447 S. Fourth St., Kankakee, Ill.
Larson, Betty Lou, 2206 Sergeant St., Joplin, Mo.
Lash, Flora Ellen, R. R. # 2, New Berlin, Ill.
Laymon, James Riley, R. R. # 2, Arcola, Ill.
Leaming, LaVera J., 1210 Maple St., Marion, Ind.
Learned, Dale Martin, 476 N. Forest Ave., Bradley, Ill.
Lee, Jackie, 404 Dwight St., Kewanee, Ill.
Lefton, Richard Allan, R. R. # 2, Covington, Ind.
Leitsch, Margie, 1106 Grand Blvd., Hamilton, O.
Leitsch, Wilma Lee, 1106 Grand Blvd., Hamilton, O.
Leitzman, James Edward, R. R. # 2, Victor, Ia.
Leonard, James Edward, 702 E. Pembroke, Tuscola, Ill.
Lepley, Lola Burdette, 222 N. Evergreen St., Kankakee, Illinois.
Leppert, Charles William, 189 Main St., Bourbonnais, Ill.
Leppert, Y. Bernadine Riddle, 189 Main St., Bourbonnais, Illinois.
Lewis, Geraldine Ellen, R. R. # 1, Unionville, Mich.
Lewis, Harry Richard, 1115 University St., Burlington, Ia.
Lewis, Naomi L., 1559 N. Morgan St., Decatur 1, Ill.
Lewis, Warren Arthur, 664 Cannon St., Kankakee, Ill.
Liddell, Paul Lee, 917 W. Genesee St., Lansing, Mich.
Lindberg, Evelyn Joyce, Olivet College, Kankakee, Ill.
Lindsey, Francis Lynn, St. Louis, Mo.
Ling, Augusta Grace, 12631 Asbury Pk., Detroit, Mich.
Linton, Mildred Pauline, 211 E. Allen St., Farmer City, Illinois.
Lipp, Roberta Lee, 1843 Applegate St., Indianapolis, Ind.
Locker, Tweena, 501 Meredith St., Indianapolis, Ind.
Lochner, Edna Zylpha, St. Joe, Ind.
Logsdon, Mary Elizabeth, R. R. # 4, Ottawa, Ill.
Long, Catherine Lucille, Merritt, Mich.
Long, Naomi Ellen, Tappen, N. D.
Lott, Earle Sherwood, 210 S. 6th Ave., Kankakee, Ill.
Lowery, Opal Irene, 607 Henricks St., Mishawaka, Ind.
Lucas, James Houston, West Frankfort, Ill.
Ludwig, Martha, 6946 Paseo St., Kansas City 5, Mo.
Lund, Lillian, 255 N. Greenwood Ave., Kankakee, Ill.
Lunsford, David Allen, 183 N. Blaine St., Bradley, Ill.
Lutz, Ethel Jane, 207 Nash St., Dearborn, Mich.
Lynch, LaVerne Irvin, 1144 Oak St., Toledo, O.
Lyons, James Howard, 15313 Broadway, Harvey, Ill.

M

McAuly, Ruth Flora, 197 Main St., Bourbonnais, Ill.
McCann, William Bryan, 21 Lutz Ave., Dayton, O.
McCaulla, James Russell, 343 Elm St., Osborn, O.
McClatchey, Robert F., 368 Duane St., Kankakee, Ill.
McClellan, Dorothy Lois, 2301 S. Fifth St., Elkhart, Ind.
McClellan, Esther Marie, 2301 S. Fifth St., Elkhart, Ind.
McClore, Darl Borlin, Olivet College, Kankakee, Ill.
McCord, Betty Jean, 200 W. Tydeman Ave., Roxana, Ill.
McCormick, Elmer Emil, 9 Pearl St., Ext., Augusta, Me.
McCready, Edna June, 1017 Elm St., Ashland, O.
McDonald, Carolyn June, 540 W. Franklin St., Troy, O.
McElrath, Gerald Wilbur, 401 S. Center St., Charleston, Missouri.
McElvain, Ruth Maxine, 33 W. 65th St., Cincinnati, O.
McFarland, Albert Edwin, Box 322, Evart, Mich.
McGillvary, Ruth Lenna, R. R. # 1, Pleasant Hill, O.
McGough, Virginia Mae, R. R. # 1, Mt. Vernon, O.
McGuire, William Marshall, 401 W. Barnes St., Lansing 10, Michigan.
McGuire, Mildred June, 401 W. Barnes St., Lansing 10, Michigan.
McHolland, Geneva L., R. R. # 1, Cambridge City, Ind.
McKay, Betty Mae, Griggsville, Ill.
McKinley, Mildred Louise, 35 Convent St., Bourbonnais, Illinois.
McKnight, Clyde Milven, R. R. # 4, Muncie, Ind.
McQueary, Alfred Allen, 174 N. Washington St., Bradley, Illinois.
McReynolds, Eleanor Fay, 1025 W. 2nd St., Mt. Vernon, Indiana.
McReynolds, Wilma, Box 297, Mt. Vernon, Ind.
Mahan, James Porter, R. R. # 2, Vincennes, Ind.
Mains, Naome Beatrice, 810 Woodland Drive, Connersville, Indiana.
Malone, James Wesley, 616 Jefferson St., Rensselaer, Ind.
Manley, Orma J., 2020 Kentucky St., Racine, Wis.
Markins, Reuhama Ellen, Tile Station, Zanesville, O.
Manett, Allen Riley, Olivet College, Kankakee, Ill.
Manett, Ruth E., Olivet College, Kankakee, Ill.
Marrett, Allen R., 604 S. 4th St., Pekin, Ill.
Martin, Clifford Eugene, R. R. # 3, Worthington, Ind.
Martin, Jr. Howard Samuel, 11 S. 5th., Clinton, Ind.
Meadows, Kathryn Wood, R. R. # 1, Greensboro, N. C.
Measell, June Arlene, 344 Whittemore St., Pontiac 20, Michigan.
Medcalf, Robert, 314 E. 10th St., Bloomington, Ind.
Mellish, John William, 2134 Bowers Rd., Lapeer, Mich.
Mellish, George Allen, R. R. # 4, Lapeer, Mich.
Metas, Grace Ellyn, 528 W. Marquette Rd., Chicago, Ill.
Mewbourn, Joyce, 221 S. Pearl St., Spencerville, O.
Meyer, Ruth Elizabeth, Tefft, Ind.
Michaels, Lois Averil, 912 W. Maple St., Champaign, Ill.
Miller, Betty Hope, Brooktondale, N. Y.
Miller, Doris Ruth, 6115 Whiteford Rd., Sylvania, O.



T. T. LIDDELL, Minister
Parsonage Phone 5-6250

Residence 917 W. Genesee

First Church of the Nazarene

LANSING

Genesee at Butler

MICHIGAN



P. T. HAMMER
Sunday School
Superintendent

H. D. GIBBS
N.Y.P.S. Pres.



J. RAYMOND
KNIGHTON, JR.
Minister of Music

Church Office
Phone 5-0613

Dedicated to God and Holiness
Devoted in Ministry to All Humanity.

First Church of the Nazarene

Third and Brown Streets
PORTSMOUTH, OHIO



Congratulations
To The Class
of '47



MILES A. SIMMONS
Minister

When in Portsmouth, Ohio, you are cordially invited to worship with us.

STUDENT ROSTER

(Continued)

Miller, Delbert Eugene, 65 Roy St., Bourbonnais, Ill.
 Miller, Haldor Lee, 65 Roy St., Bourbonnais, Ill.
 Miller, Lowell Burdette, R. R. # 1, Spencerville, O.
 Miller, Meredith, 625 W. Adams St., Muncie, Ind.
 Miller, Joan, Georgetown, Ill.
 Miller, Thelma June, R. R. # 2, Marango, Ia.
 Miller, Violet Mae, 611 S. Whiteford Rd., Sylvania, O.
 Millikan, Dwight Paul, 557-23rd St., Rock Island, Ill.
 Millsbaugh, Arlene Faye, 11245 McKinley St., W. Dearborn, Mich.
 Milner, Wanda Pauline, R. R. # 8, Box 6, Indianapolis, Indiana.
 Mineo, Loretta Jean, Willowhill, Ill.
 Mingus, James Albert, R. R. # 1, Box 278, New Augusta, Indiana.
 Mitchell, Garnett Jackson, 246 N. Indiana Ave., Kankakee, Illinois.
 Mitten, Donald, 94 Marsile St., Bourbonnais, Ill.
 Moneymaker, Marcia Mae, 55 S. Ninth St., Beech Grove, Indiana.
 Monroe, Patsy Lou Maxine, 917 N. Cedar St., Lansing 6, Michigan.
 Moon, Erma Lucille, 213 N. Pearl St., Joplin, Mo.
 Moore, Gerald Hugh, 230 W. Warren St., Gelina, C.
 Moore, Marianne, R. R. # 2, Dora, Ind.
 Morre, Richard Arnold, 136-140 N. Clinton St., Bradley, Illinois.
 Morford, Myron C., 435 S. Poplar St., Kankakee, Ill.
 Morgan, Bonita Blanche, Box 114, Plainville, Kans.
 Morgan, Earl Lorraine, 26346 Towley St., Royal Oak, Michigan.
 Morgan, Martella Yvonne, 344 N. Bradley St., Indianapolis Indiana.
 Moriarity, Ruth Ellen, 1238 Parker St., Indianapolis, Ind.
 Morris, Rex G., R. R. # 3, Manton, Mich.
 Morris, Robert Franklin, 504 Bloomington St., Iowa City, Iowa.
 Morris, Meredith, Clay City, Ind.
 Morris, Thomas Joseph, 1453 E. Clinton St., Frankfort, Indiana.
 Moss, Betty Jane, 1331 Grogan Pl., St. Louis, Mo.
 Moss, Udell Gene, 1331 Grogan Pl., St. Louis, Mo.
 Mounts, Dewey, Lockland, O.
 Moyer, Emery Arthur, 348½ W. Stone St., Kankakee, Ill.
 Munger, Ardis Muriel, 9189 Mt. Mondis Rd., Otisville, Mich.
 Munn, Samuel V., 8 Stewart St., Athens, O.
 Myers, Margaret Ann, R. R. # 1, Eaton, O.

N

Nation, Herbert, 212 N. Prairie St., Bradley, Ill.
 Neill, Snowden A., 646 S. Indiana Ave., Kankakee, Ill.
 Nelson, Lloyd Ernest, 393 S. Fraser Ave., Kankakee, Ill.
 Nenstiel, Wanda, 330 E. Center St., Dunkirk, Ind.
 Neumann, Robert E., 434 N. Union St., Kankakee, Ill.
 Newman, Robert Edwin, 1211 E. Fox St., South Bend 14, Indiana.

Nicholson, M. Joan, 219 W. Miller Ave., West Terre Haute, Ind.
 Nichwander, Glenn Arthur, Manteno, Ill.
 Nielson, David Emanuel, 1187 Lenox St., Detroit 15, Michigan.
 Niclson, Joseph Finley, 23 William St., Cambridge, Mass.
 Niece, Perry Earl, 35 Convent St., Bourbonnais, Ill.
 Nohden, Maybelle Ann, 4333 Flora St., Kansas City, Mo.
 Nutt, Naydine Maxine, 717 W. Washington St., Bloomington, Ill.
 Nutt, Virgil V., 931 E. Locust St., Kankakee, Ill.

O

Oliver, Gerald David, 503 N. Industrial St., Kankakee, Ill.
 Olsen, Daryl D., Britt, Ia.
 Olsen, Herman, 296 S. Myrtle Ave., Kankakee, Ill.
 Orvis, Barbara, 76 Ellenton Ave., New Rochelle, N. Y.
 Ostrander, Wilma E., 508 C. Avenue, N. W. Cedar Rapids, Iowa.
 Oswalt, Charles Earl, 216 Main St., Bourbonnais, Ill.
 Overton, Maxine, Odon, Ind.
 Overton, A. Mozelle, Odon, Ind.
 Owen, Helen Marie, 710 Bird St., Hannibal, Mo.

P

Page, Luther Edward, Box 43 Acton, Ind.
 Paisley, Richard, 1041 Michigan Ave., Adrian, Mich.
 Pannier, Elmer W., Franksville, Wis.
 Park, Glen Cecil, Trinway, O.
 Parker, Donald LeRoy, 620 S. Sheldon St., Charlotte, Michigan.
 Parrott, John, Kankakee, Ill.
 Pasko, Audrey M., 332½ S. Schuyler Ave., Bradley, Ill.
 Pasko, Chester F., R. R. # 4, Huntington, Ind.
 Pasko, LaMar, 33½ S. Schuyler Ave., Bradley, Ill.
 Pate, Juanita Lee, 900 School St., Charleston, Mo.
 Patterson, Violet Marie, R. R. # 6, Brown's Addition, Danville, Ill.
 Payne, Frank E., 271 N. Blaine St., Bradley, Ill.
 Peacock, Minnie, 7 E. Front St., Cambridge City, Ind.
 Pfeffer, Paul E. 3397 W. 46th St., Cleveland, O.
 Pelletier, Wanda, 253 S. Greenwood Ave., Kankakee, Ill.
 Perkins, Beulah Andras, R. R. # 6, Box 132, Dayton, O.
 Perry, Charles Wayne, Box 203 Grafton, O.
 Pester, Clara Elizabeth, 407 N. Blackhoof St., Wapakoneta, Ohio.
 Peterson, Gordon Matthew, 109939 State St., Chicago, Ill.
 Philebaums, Violet Jeanne, 120 E. Floral Ave., Portland, Indiana.
 Phillips, Faye W., Olivet Hill, Ky.
 Phillips, Marie Ellen, 451 N. Wolcott St., Indianapolis, Indiana.
 Phillips, Thomas Everett, Olivet Hill, Ky.



W. TIPPITT, Chorister

GEORGE H. HARMON, Pastor

West Side Church of the Nazarene

West Eldorado at Momoe

DECATUR, ILLINOIS

Congratulations to the Entire Student Body,
Dr. and Mrs. Van Duyn and Faculty

WHEN IN DECATUR WORSHIP WITH US

Yours for a Great Olivet Nazarene College

STUDENT ROSTER

(Continued)

Pierce, Darwin M., DeSoto, Wis.
 Pierce, Lysle Addison, Moweaqua, Illinois, R. R. # 3.
 Pierson, Paul, 1127 N. Alton Ave., Indianapolis, Ind.
 Piner, Lewis Allen, R. R. # 1, Muncie, Ind.
 Pittam, Robert Earl, Box 22 Star Route, Hemet, Calif.
 Pitts, Jesse E., Stineaville, Ind.
 Plankael, Betty Jean, 7½ Lincoln Parkway, Crystal Lake, Illinois.
 Polmounter, Joseph, 13292 W. Saginaw St., Clio, Mich.
 Pombert, Margaret Corkhill, 671 N. Indiana Ave., Kankakee, Ill.
 Potter, David Henry, Aronia Park, Ill.
 Potts, Clifford Albert, 290 N. Rosewood Ave., Kankakee, Illinois.
 Potts, Lenna Jean, 227 Lynn St., Flushing, Mich.
 Powers, Garfield, Nevisdale, Ky.
 Powers, Hardy John, 4311 Ashby Ave., Des Moines, Ia.
 Powers, Joseph Dudley, 4311 Ashby Ave., Des Moines, Ia.
 Powers, Nona Jane, 4311 Ashby Ave., Des Moines, Ia.
 Powers, Rosa M., R. R. # 2, Newburgh, Ind.
 Price, Elwin Hugh, 115 E. Alberta St., Sidney, Mont.
 Prong, Harold Carl, 424 Potter St., Wauseon, O.
 Pryor, Robert Dean, 1128 W. Prairie St., Taylorville, Ill.
 Psaute, George Pierce, 602 N. 5th St., Auburn, Ill.
 Psaute, Marian Jean, 602 N. 5th St., Auburn, Ill.
 Purdy, Winnifred Louise, Box 196, Clarence, Mo.

Q

Quanstrom, Robert R., 272 Bridge St., Gary, Ind.

R

Raah, Ruby Imogene, R. R. # 5, Brazil, Ind.
 Rafsnider, Charlotte Audrey, 508 Rawson Ave., Fremont, Ohio.
 Rafsnider, Elvah Rachel, 508 Rawson Ave., Fremont, O.
 Rahrar, James Lee, 1017 Bayard Pk. Dr., Evansville, Ind.
 Randall, Gerald A., 383 N. Forest St., Bradley, Ill.
 Randolph, Madona E., Fredericktown, Mo.
 Rarick, Joyce, 1922 Howard Ave., Flint 3, Mich.
 Ray, Bonnie, 447 S. Schuyler Ave., Kankakee, Ill.
 Ray, Wilbur Lee, 171 N. Taylor Ave., Kankakee, Ill.
 Ream, Marian Frances, 531 Broad St., Wasworth, O.
 Redman, Allen, 503 N. 3rd St., Watseka, Ill.
 Reed, Grover C. Jr., Elkhart, Ind.
 Reedy, Edna Mae, 926 Wabash St., Wilmington, Ill.
 Reedy, Leroy H., 926 Wabash St., Wilmington, Ill.
 Reece, H. Norwood, 7811 W. 66 Pl., Argo, Ill.
 Reese, Dessie Carolyn, R. R. # 3, Lima, O.
 Reeves, Francis, Box 142, Wellston, O.
 Reeves, Joyce Louise, R. R. # 4, Bloomington, Ind.
 Reidel, Maynard Harold, Altoona, Wis.
 Replogle, Carol Jeanne, 2455 Pontiac Dr., Pontiac, Mich.

Rice, Ernest Ladeaw, 914 S. Osborn Ave., Kankakee, Ill.
 Rice, Martha Jane, 914 S. Osborn Ave., Kankakee, Ill.
 Rice, William Allen, 24 Convent St., Bourbonnais, Ill.
 Richcreek, Mary Ruth, R. R. # 1, Coshocton, O.
 Richey, Pauline, 519 Evergreen Ave., Dayton, O.
 Ricker, Faith, 4814 University Ave., Des Moines, Ia.
 Riddle, Effie Marie, 101 N. Merrimac St., Pontiac, Mich.
 Riddle, Melvin Lee, 101 N. Merrimac St., Pontiac, Mich.
 Ridenour, William Wayne, 1021 State St., Saginaw, Mich.
 Riley, Henry Thomas, 22 E. Beverly St., Pontiac 17, Mich.
 Rinebarger, William Huff, 10203 Driver St., Overland 14, Missouri.
 Ringhiser, Harold Lester, R. R. # 2, Logan, O.
 Ringhiser, Leota Margurete, R. R. # 2, Logan, O.
 Ripperdam, Wanda J., 2784 Willow Creek Rd., Gary, Ind.
 Robbins, Frances Ann, 301 S. Third St., Gary, Ind.
 Robbins, Omer D., 619 Cedar St., Mt. Carmel, Ill.
 Robinson, Don, 1308 S. Wangs St., Kokomo, Ind.
 Roby, Cecil LeRoy, 122 S. 11th St., Centerville, Ia.
 Rodgers, Paul Matthews, R. R. # 1, Enon Valley, Pa.
 Rogers, James William, R. R. # 2, Fresno, O.
 Rohrer, Norman James, R. R. # 2, Nappanee, Ind.
 Rose, Gladys, 2609 Elmo Place, Middletown, O.
 Rose, Mabel Clotine, 1728 Jackson Ave., Portsmouth, O.
 Ross, Samuel Edward, 336 N. Kenton St., Urbana, O.
 Rowe, Doris Lillian, 3410 Agnes St., Kansas City, Mo.
 Rowe, Richard Emmett, 30 S. 10th St., Richmond, Ind.
 Royal, F. David, R. R. # 3, Mason, Mich.
 Rucker, Robert Lee, 439 N. Walnut St., Danville, Ill.
 Ryan, Kathleen Ann, 904 Cobb Boulevard, Kankakee, Ill.
 Rylander, Eleanore, 15560 Normandy Ave., Detroit, Mich.

S

Sapp, John, 1213 E. Long St., Hamilton, O.
 Savage, Curtis, 1419 S. Main St., Kokomo, Ind.
 Savage, R. T., 1419 S. Main St., Kokomo, Ind.
 Scarborough, Rosa, R. R. # 3, Bethel, O.
 Schafer, Patricia Joanne, 1082 Bellows Ave., Columbus, O.
 Schisler, Barbara Ellen, Troy St., Troy, O.
 Schmidt, Irene Josephine, 338 E. Jamieson St., Flint, Mich.
 Schnell, Jess David, 816 Navarrrd St., Toledo, O.
 Schoonover, Moody M., 121 E. Lagrane St., Morence, Michigan.
 Schramm, Audrey Jane, 362 Cunnings Winona, Minn.
 Schultz, Hermenia, 801 McCracken Ave., Hoopeston, Ill.
 Schultz, Reuben Verne, R. R. # 1, Ackley, Ia.
 Schwob, Wayne Edward, R. R. # 8, Huntington, Ind.
 Scott, Charles Melvin, R. R. # 1, Bicknell, Ind.
 Seal, Ruby Rac, Farmington, Mo.
 Seitz, Dorothy Mae, Piedmont, Mo.
 Selix, Hazel, Osseo, Minn.
 Servies, Edith F., 408 Sheridan Ave., Crawfordsville, Ind.
 Seybert, Elizabeth Jean, 117 N. Divic St., Momence, Ill.

COMPLIMENTS OF
The Church of The Nazarene
SCOTT AND TROTTER
Sikeston, Missouri

Pastor
J. W. HOFFERT
Phone 751

CONGRATULATIONS
TO THE CLASS OF "47"
Pastor
REV. CLYDE AMMONS
N.Y.P.S. Pres.
H. B. SOUTHERLAND

Church of the Nazarene
SIOUX CITY, IOWA

With Heartfelt Appreciation
for
O. N. C. Achievements

C. W. PERRY
Minister

First Church of the Nazarene
310 West First Street MARION, INDIANA

"In the Heart of the Northeastern Indiana District"



**LAFAYETTE PARK CHURCH
OF THE NAZARENE**
2800 St. Vincent Ave. ST. LOUIS, MISSOURI

*Northside Church
of the Nazarene*
EUGENE ST. AT BAMES AVE.

A Live, Aggressive
Church, true to the stand-
ards of Holiness in all
services.



VISIT US. YOU WILL BE
GLAD YOU DID.

REV. E. SHORT
Minister

THE ROSEVILLE CHURCH OF THE
NAZARENE . . . EXTENDS A HEARTY
CONGRATULATION AND
BEST WISHES
TO THE CLASS OF "47"

Pastor
REV. CECIL HAYES
S. S. Superintendent N.Y.P.S. President
MR. THEO. STRAHL MR. CHAS. GRANNON

STUDENT ROSTER

(Continued)

- Shaffer, Louis Eugene, R. R. # 1, Marengo, O.
 Shaffer, Mary Louise, 1344 E. Main St., Muncie, Ind.
 Shanks, Robert, 301 N. Third St., Watseka, Ill.
 Sharp, Robert H. W. 6th St., Rock Falls, Ill.
 Shearer, Jean, 657 Cleveland St., Marion, O.
 Sheldon, Newman Howard, R. R. # 1, Churubusco, Ind.
 Shelton, George Louis, 3111 Chicago Rd., Steger, Ill.
 Shipley, Leroy E., 6615 W. 28 St., Gary, Ind.
 Shockley, Dolly M., 235 N. Walcott St., Indianapolis, Ind.
 Shrider, Betty Lucille, 723 E. High St., Lima, O.
 Shults, Eldon Raymond, 2646 Willowdale Rd., Gary, Ind.
 Shroll, Beverly, 3833 S. 52nd St., Milwaukee, Wis.
 Shuman, Marguerette, R. R. # 1, Kankakee, Ill.
 Sievers, Dale Lewis, 1421 Fletcher Ave., Fort Wayne 4, Indiana.
 Sigler, Gilda Rae, Olivet College, Kankakee, Ill.
 Sigler, Carrie Mae, Olivet College, Kankakee, Ill.
 Sigler, Jerry Loy, Olivet College, Kankakee, Ill.
 Sigler, Ray O., Olivet College, Kankakee, Ill.
 Sigler, Shirley May, Olivet College, Kankakee, Ill.
 Silvernail, Pauline H., 40 S. Moore St., Cass City, Mich.
 Sinders, Naomi Josephine, R. R. # 1, Centerpoint, Ind.
 Sirrinc, Norma Louise, 613 Gordon St., Midland, Mich.
 Sisson, Mildred Perdine, 669 Murray Ave., S. E. Roanoke, Virginia.
 Skaggs, Ahleida Madine, 2733 Geyer Ave., St. Louis 4, Mo.
 Sledd, Geneve Irene, Justus, O.
 Small, Edith G., 1417 Monon Dr., Bloomington, Ind.
 Small, Howard, Ray & Holmes St., Indianapolis, Ind.
 Smith, Bernie, 180 N. Main St., Bourbonnais, Ill.
 Smith, Brodis Thomas, Colfax, Ill.
 Smith, Elizabeth Allison, 76½ Marsile St., Bourbonnais, Illinois.
 Smith, Henry James, Mason, Mich.
 Smith, Henry Louis, Stockbridge, Mich.
 Smith, Ivan L., 511 Grand St., Ligonier, Ind.
 Smith, Janis Gail, Mason, Mich.
 Smith, Mabel Irene, Obetz Sta., Columbus 7, O.
 Smith, Margaret Clare, 76½ Marsile St., Bourbonnais, Ill.
 Smith, Ronald Lee, 156 Main St., Bourbonnais, Ill.
 Snodgrass, Mary, R. R. # 3, Clinton, Ind.
 Snow, Farrell Dean, 38322 Prospect St., Kansas City, Mo.
 Snow, Ferne D., 243 Duane St., Kankakee, Ill.
 Snow, Naomi Welsh, 3643 Winnebino St., St. Louis, Mo.
 Snyder, Esther Bauerle, 136½ Main St., Bourbonnais, Ill.
 Snyder, George Arthur, 136½ Main St., Bourbonnais, Ill.
 Somerville, Kathryn, 315 Castlen St., Owensboro, Ky.
 Sonju, Solveig Myrtle, 4249 W. Wrightwood Ave., Chicago 39, Illinois.
 Sonju, M. Christine, 2230 N. Spaulding, Chicago, Ill.
 Soule, B. Linn, R. R. # 2, Spring Lake, Mich.
 Sparks, Lorraine, 4232 Oak St., New Boston, O.
 Sparks, Lowell H., Olivet College, Kankakee, Ill.
 Sparks, Margie Mae, Olivet College, Kankakee, Ill.
 Sparks, Robert Ervin, 709 E. 3rd St., Seymour, Ind.
 Sprang, Lester C., R. R. # 1, Shaeve, O.
 Stacy, Doris Maxine, Moorland, Ia.
 Stacy, Lucy Jennette, 206 N. Church St., Bowling Green, O.
 Stark, Dean V., Beaver, Ia.
 Stark, Robert, 3 Maple St., Norwalk, O.
 Starr, Lois Beverly, 2130 W. Van Buren St., Phoenix, Arizona.
 Steinegger, Mary Louise, 921 W. Matthews St., Jonesboro, Arkansas.
 Stentz, Mary, 466 S. Wildwood Ave., Kankakee, Ill.
 Stephens, Ida Alberta, 711 Matthews St., Sikeston, Mo.
 Stevens, Mary Ann, 100 Maysville Pike, So. Zanes, O.
 St. John, Clare Duane, Highland, Mich.
 St. John, Gladys Perry, Olivet College, Kankakee, Ill.
 Stoops, Wesley Philson, Olivet College, Kankakee, Ill.
 Strahl, John Milton, R. R. # 2, Roseville, O.
 Street, Pearl Mae, 316 W. Washington St., Howell, Mich.
 Strickland, Lorraine, 924 W. Oklahoma St., Enid, Okla.
 Strickler, Lois Joan, 323 N. Center St., Bradley, Ill.
 Strickler, Shirley Ann, 323 N. Center St., Bradley, Ill.
 Strickland, Wildean Louise, 1120 Esthner St., Wichita, Kansas.
 Stroble, Howard G., 912 Brice Ave., Lima, O.
 Studebaker, Paul David, 655 N. Mulberry St., Muncie, Indiana.
 Sturgeon, Geneva, 35 Ray St., Bourbonnais, Ill.
 Sturgeon, Theodore, 35 Ray St., Bourbonnais, Ill.
 Suderman, Patricia, 1035 Sanford Rd., Midland, Mich.
 Sumwalt, James, R. R. # 1, Hartford City, Ind.
 Supernois, Alice Louise, 130 King St., Highland, Mich.
 Swan, Dixie Lee, Olivet College, Kankakee, Ill.
 Swan, Kenneth C., 101 N. Merrimac St., Pontiac, Mich.
 Swan, Kenneth Dale, Olivet College, Kankakee, Ill.
 Swank, Dwan Alice, Second St., Charleston, Mo.
 Swanson, Robert Lee, R. R. # 3, Ottamwa, Ia.
 Swisher, Darl Vernon, 420 E. Water St., Kankakee, Ill.
 Switzer, Lorraine Elizabeth Gleason, Tenn.
- T
- Tassler, Levi August, 617 Osage St., Fort Wayne, Ind.
 Tate, Eva Bernice, 138 S. Franklin St., Delaware, O.
 Taylor, Clara May, 329 S. Harrison Ave., Kankakee, Ill.
 Taylor, Jeanne May, 1811 N. A. A. Richmond, Ind.
 Taylor, Louie L., 533 Prairie Rd., Kalamazoo, Mich.
 Taylor, Nellie, 914 E. Caramillo, Colorado Springs, Colo.
 Taylor, Perry Lee, 1068 S. Wildwood Ave., Kankakee, Ill.
 Taylor, Robert Eddy, R. R. # 1, Brookville, Pa.
 Taylor, Robert H., R. R. # 3, Kalamazoo, Mich.
 Terrell, Claude, 121 Main St., Bourbonnais, Ill.
 Terrell, Claude Conway, Jr., 121 Main St., Bourbonnais, Ill.
 Thacker, Lillian Agnes, R. R. # 2, Williamsburg, O.
 Thiesfeld, Hattie M., Peotone, Ill.
 Thompson, Warren Clifford, 2407 Thompson St., Terre Haute, Ind.

"The Singing Church of Columbus"

First Church of the Nazarene

King and Hunter Avenues . . . Columbus, Ohio



ROY F. STEVENS
Pastor

- SERMONS THAT INSPIRE
- SONGS THAT BLESS
- MUSIC THAT THRILLS
- FELLOWSHIP THAT LIFTS



CHARLES E. HIGGINS
Director of Music

THIRTY-THREE YEARS A SPIRITUAL HEART IN THE HEART OF COLUMBUS

Church of the Nazarene

Washington at 7th St.

BURLINGTON, IOWA

The Church of "The Nazarene Hour"

Broadcasting the Morning Worship Service over KBUR
each Sunday from 11-12 A. M.

CRAIG MILLER
Sunday School Supt.

MRS. W. C. ALLSHOUSE
Director of Music

WALTER GIESELMAN
N.Y.P.S. President



REV. WILLIAM C. ALLSHOUSE
Pastor

"BURLINGTON'S DOWNTOWN EVANGELISTIC CENTER"

STUDENT ROSTER

(Continued)

Thornton, Collins Elsworth, 468 N. Cleveland Ave.,
Bradley, Ill.
Tingson, Gregorio Juarez, Box 112 Salem, Ill.
Tohill, Edith, 1104 E. Main St., Robinson, Ill.
Tompkins, Charles, 505 N. Grand Ave., Bradley, Ill.
Tonk, Berdella Arlene, Olivet College, Kankakee, Ill.
Tooley, Carol Evangeline, R. R. # 2, Princeton, Ind.
Trapp, Lillie Bell, R. R. # 2, Orient, O.
Treece, Evelyn Louise, R. R. # 1, West Salem, O.
Trimble, James Harlan, R. R. # 6, Greenfield, Ind.
Tripp, Dorothy Lowman, 168 Campbell St., New Bedford,
Massachusetts.
Trotter, Doris Elaine, Berea St., St. Louis, Mo.
Trudeau, Bonnie, 254 S. Nelson St., Kankakee, Ill.
Turner, Dorothy Eileen, R. R. # 1, Fredericktown, O.

U

Uhrig, Pauline Mae, 625 Westwood Ave., Dayton, O.
Ullom, Helen Jean, 181 N. Main St., Mt. Gilead, O.
Ullom, Robert Clark, 396 S. Wabash Ave., Bradley, Ill.
Ulveling, Gwen Sue, 440 S. Dearborn St., Kankakee, Ill.
Ummel, Paul Ray, R. R. # 1, Wakarusa, Ind.
Ummel, Pauline Mae, R. R. # 1, Wakarusa, Ind.
Underwood, Shirley Jeanne, 124 E. Park St., Silman, Ill.
Unger, Hazel Viola, 539 Church St., Logan, O.
Vance, Ardis George, R. R., Lake City, Mich.
Vangunten, David Lee, Olivet College, Kankakee, Ill.
Vangunten, Richard Verl, 3871 Northampton Rd.,
Cleveland Hts., O.

V

Vanhook, Geneva, 248 Avalon St., Cincinnati, O.
Von Seggen, Donita, Bondparte, Ia.
Von Seggen, Wilma Lois, Farmington, Ia.
Voyles, Thomas Lyle, 323 W. Broadway, Bradley, Ill.

W

Wagner, Thelma Louise, R. R. # 2, Cambridge, O.
Walker, James Warren, R. R. # 1, Edwardsville, Ill.
Walls, Lyndon A., Olivet College, Kankakee, Ill.
Walter, Lois Emma, Bonfield, Ill.
Ward, Clarence Waldo, Box 429, Murphysboro, Ill.
Warford, Donald Maurice, 833 Woodrow St.,
Indianapolis, Ind.
Warnecke, Genevieve Olive, Peotone, Ill.
Warner, Barbara Ellen, 551 Jessop St., Lansing, Mich.
Warnen, Byron, Essex, Ill.
Warner, William O., 138 9th St., Dunbar, W. Va.
Warstler, Glenn C., Waterloo, Ind.
Water, Bernice Phipippe, 1143 S. Osborn St., Kankakee,
Illinois.
Watson, Juanita Beatrice, 329 Taft Ave., Urbana, O.

Watson, Luther Stanley, 102 N. Grove St., Walbridge, O.
Watson, Roy O., 1005 Miami St., Urbana, O.
Watson, Ruth Emma, 1005 Miami St., Urbana, O.
Watts, Donald Ray, 617 Howard St., Findley, O.
Watts, Goldie May, 518 Hull Ave., Findley, O.
Wayland, Donald Lee, Trading Post, Bradley, Ill.
Weaver, Kathleen, 214 Main St., Bourbonnais, Ill.
Weaver, Pershing Carroll, R. R. # 2, Havana, Ill.
Webb, Floyd Eugene, 376 Reed Ave., Marion, O.
Weeks, James A., Tefft, Ind.
Welch, Frances Weaver, 25 S. Harbine Ave., Dayton, O.
Weller, Flora Mae, 148 S. Harrison St., Kankakee, Ill.
Wellman, Walter Donald, Olivet College, Kankakee, Ill.
Wellman, Sherrill Wayne, Olivet College, Kankakee, Ill.
Wells, Alberta Ellen, 522 Chandler St., Flint 3, Mich.
Wells, Paul Eugene, 439 Chestnut St., Newcomerstown, O.
Wells, Roy, R. R. # 8, Hamilton, O.
Welsh, Naomi Ruth, 3643 Winnebozo St., St. Louis, Mo.
Welton, Wayne E., 366 W. Ann Ardore Td. Plymouth,
Michigan.
Wentworth, Wilfred J., 2060 Columbia Rd., Berkley, Mich.
West, Frances Irene, 4109 Harrison St., Kansas City, Mo.
Whalen, William Patrick, 536 S. Harrison St., Kankakee,
Illinois.
Wheeldon, Calvin Clinton, 1612 W. 2nd St., Marion, Ind.
Wheelock, Daniel Eugene, 309 Division St., Mendota, Ill.
Whipple, Edwin Elsworth, Mt. Gilead, O.
White, George Wendell, R. R. # 3, Linton, Ind.
White, Helen Lee, 1417 Brabyn St., Flint 3, Mich.
White, John Lawson, 1132 Haven St., Mt. Morris, Mich.
White, Martha Mae, R. R. # 1, St. Louis, Mich.
Whitehead, Margaret Needles, 505 Brush Creek, Kansas
City 4, Missouri.
Whitteberry, Irene Lucile, R. R. # 5, Lafayette, Ind.
Whitteberry, Paul Nathan, R. R. # 5, Lafayette, Ind.
Wickersham, Gordon Clement, 104 Crestmont Road,
Binghamton, N. Y.
Wicks, Carl Richard, R. R. # 2, Athens, O.
Widger, Francis Willard, 196 N. Vasseur St., Bradley,
Illinois.
Wilcox, A. Ruth, 2641 Fairbanks Ave., Gary, Ind.
Wilde, Arlene Elizabeth, 138 N. 12th St., Coshocton, O.
Wilde, Thomas Wilbur, 138 N. 12th St., Coshocton, O.
Wilkinson, Gwendolyn Joyce, 612 Lingle Ave., Owosso,
Michigan.
Wilkinson, Melvin Leon, 340 S. 6th St., New Castle, Ind.
Willfong, Ruth Leona, University Park, Ia.
Williams, Goldie Marie, Columbus, Ind.
Williams, June Leona, Woodland, Ill.
Williams, Marjorie Joyce, 1107 Greenwood Ave., Jackson,
Michigan.
Williams, Roy Kenneth, 334 N. Randolph St., Indianapolis,
Indiana.
Willingham, Charles Alexander, 5330 Paseo St., Junser
City, Missouri.

FIRST CHURCH OF THE NAZARENE

Corner of West Washington and Mason Streets
BLOOMINGTON, ILLINOIS



"THE FRIENDLY CHURCH"

WHEN IN BLOOMINGTON VISIT US

"... Worship the Lord in the Beauty of
Holiness."—I Chron. 16:29.

CONGRATULATIONS TO THE CLASS OF 1947

Olivet Nazarene College Students of 1946-47

Virgil Nutt
Selden Nutt
Naydine Nutt
Robert Swanson
Brodie Smith



REVS. ARTHUR
AND MINA NUTT
Pastors

First Church of the Nazarene

ELM AT WEST ST., LIMA, OHIO

Minister

REV. J. E. DAVIDSON



"YOU ARE
NEVER
A STRANGER
HERE"



812 WEST MARKET ST.
TELEPHONE 9-3671

THE EVANGELISTIC CHURCH
IN THE CENTER OF LIMA

STUDENT ROSTER

- Wilson, Clayton Paul, 195 S. Schuyler Ave., Bradley, Ill.
 Wilson, Esther Irene, 912 W. Wabash Ave.,
 Crawfordsville, Ind.
 Wilson, Helen Frances, R. R. # 1, Manchester, O.
 Wilson, Jeanne Berkley, 3431 Clubview Dr., Columbus,
 Georgia.
 Wilson, Jeanne Muriel, R. R. # 2, Springfield, O.
 Wilson, Laura Ann, R. R. # 2, Lagrange, Ind.
 Wilson, Laurena, Laona, Wis.
 Wilson, Merton H., 2529 Thatcher St., Saginaw, Mich.
 Wilson, Mildred Irene, 195 S. Schuyler Ave., Bradley, Ill.
 Wilson, Milton Stephen, Viroqua, Wis.
 Wilson, Otho J., 606 Drexel Ave., Detroit 15, Mich.
 Wilson, A. Pauline, 4226 Maple St., New Boston, O.
 Wilson, Winifred Mae, 5762 16th St., Detroit, Mich.
 Wind, Barbara Jean, 1115 University Place, Burlington,
 Iowa.
 Wind, James Wesley, 1115 University Place, Burlington,
 Iowa.
 Wine, John Carl, 534 Richmond St., Winchester, Ind.
 Winters, Estalene Mae, 430 Wall Ave., Cambridge, O.
 Winters, Phyllis Leah, 430 Wall Ave., Cambridge, O.
 Wiseman Edward Leo, Olivet College, Kankakee, Ill.
 Wiseman, Jean Sigler, Olivet College, Kankakee, Ill.
 Witt, Forrest Edward, 578 S. Poplar Ave., Kankakee, Ill.
 Wolf, Mary Louise, 1285 E. Merchant St., Kankakee, Ill.
 Wood, Alfred Frank, R. R. # 1, Greensboro, N. C.
 Wood, Bertha, 10741 Normal Ave., Chicago, Ill.
 Woods, Leah Ruth, 5063 Delaware St., Gary, Ind.
 Worgul, Henrietta Marie, 600 Baker St., Lansing, Mich.
 Worley, Joe David, 734 Poplar St., Poplar Bluff, Mo.
 Wright, Evan Ralph, 1741 Wabash Ave., Ft. Wayne, Ind.
 Wright, James Edward, 742 W. Stone St., Kankakee, Ill.
 Wright, Laura Ann, R. R. # 2, Lagrange, Ind.
 Wright, Melvin Reford, 555 E. Birch St., Kankakee, Ill.
 Wright, Orvil T., R. R. # 1, Eldon, Mo.
- Y
- York, Naomi, Valley Station, Ky.
 York, William Russel, Windchester, Ind.
 Young, John Warren, 918 31st St., South Bend, Ind.
 Young, Raymond Marton, 3752 W. 138 St., Cleveland 11,
 Ohio.
- Z
- Zachary, Dorothy Hope, R. R. # 1, Shelbyville, Ill.
 Zachgo, Elmer H., 550 S. Poplar Ave., Kankakee, Ill.
 Zachmire, Lois F., R. R. # 1, Chicago Heights, Ill.
 Zook, Ruth Charlene, 1913 Federal Ave., Kansas City 3,
 Kansas.
 Zurcher, Laverne Floyd, R. R. # 2, Berne, Ind.

CONGRATULATIONS TO THE CLASS OF '47



REV. REMISS REHFELDT
District Superintendent



CLAYTON BAILEY
President Olivet Iowa Club



REV. ALECK ULMET
District N.Y.P.S. President

I O W A

"WHERE THERE'S A MARKET FOR SERVICE"

COMPLIMENTS OF

First Church of the Nazarene

H. DALE MITCHELL

Pastor

"Christian Corner"

64th at Eggleston
CHICAGO, ILLINOIS

CONGRATULATIONS
Class of '47



REV. AND MRS. L. J. DUNHAM AND
LORELLA
Pastors

Church of the Nazarene

501 South Third Street PEKIN, ILLINOIS

WHEN IN PEKIN WORSHIP WITH US

Olivet Nazarene College Students of 1946-47
RUTH MARRETT ALLEN MARRETT

COMPLIMENTS

OF

First Church of the Nazarene

ANDERSON, IND.

W. B. GREEK
Pastor

Greetings
to
The Students
Of
Olivet College

Church of the Nazarene

WINCHESTER, INDIANA

REV. EARL VAN HOUGHTON, Pastor

THE CHURCH WHERE YOU ALWAYS FEEL AT HOME



C. E. STANLEY, Pastor
KEN BURBRINK, S. S. Supt.

SEYMOUR, INDIANA

Church of the Nazarene

CONGRATULATES

THE CLASS OF '47, STUDENTS AND
FRIENDS OF A GREAT COLLEGE

"Let Us Keep the Glory Down"

The Aurora and Olivet Nazarene College

You Have Our
Cooperation
Appreciation
Good-Will and
Prayers for

Greater usefulness and Christian success
in your responsibility of spreading
BIBLE HOLINESS
IN LIFE AND PRECEPT AROUND THE WORLD

The Indianapolis District

GENE E. PHILLIPS
District Superintendent



Congratulations

**Dr. Van Duyn
and
Class of '47**

From the
Michigan District

N. Y. P. S.

* Hi-N. Y. Scholarship

* Michigan Olivet Alumni Club

* MOAC Scholarship



C. EDWIN HARWOOD
District President

INSPIRATIONAL

AGGRESSIVE

"Your Church Home While Away From Home"

Olivet Nazarene College Church

*Dedicated to the Propagation of
Scriptural Holiness*

ROSS E. PRICE, Minister

"A CHRISTIAN CENTER
FOR
COLLEGE YOUTH"

FRIENDLY

SPIRITUAL



Your Publishing House . . .

is an institution of the church. It is controlled by the church. It is operated for the sole purpose of serving the church as a denominational press and supply house and to assist the church in its program of giving the full gospel to the whole world. Its particular part of that program is of course the ministry of the printed page.

To give you an idea of the part the Nazarene Publishing House is privileged to have in the work of the church we give you the following facts:

The Nazarene Publishing House

—has assets totaling more than one million dollars—every dollar dedicated to the task of spreading the gospel over the entire world.

—is literally "girdling the globe with salvation." If the periodicals published since 1912 were placed end to end they would completely encircle the earth and cover more than 20,000 miles on the second circuit. More than 23,500,000 periodicals are now being published annually.

—is filling a vital place in the field of religious book publishing. During the calendar year closing December 31, 1946 more than 156,400 books and booklets have been printed.

—is a substantial contributor to the general interests of the church. Since 1940, more than \$174,000 has been given to various departments of general church activity.

—is equipped and ready to fill orders for anything in the religious field needed for personal, Sunday school or church use. Your patronage is urged for any and all items of a religious nature needed by yourself, your church or your Sunday school.

NAZARENE PUBLISHING HOUSE
2923 Troost Avenue, Box 527
Kansas City 10, Mo.

Future Students

**IN THIS
1947 AURORA**

Is A Preview Of

Olivet Nazarene College

A fully accredited school

We Maintain the Following Departments

- SCHOOL OF RELIGION
- COLLEGE OF LIBERAL ARTS
- SCHOOL OF MUSIC
- BIBLE SCHOOL
- HIGH SCHOOL

For Literature, Address

Olivet Nazarene College

KANKAKEE, ILLINOIS



DR. C. A. GIBSON
District Superintendent

WISCONSIN DISTRICT

Stands Back of

**Olivet Nazarene
College**



REV. WM. ALLEN
N.Y.P.S. President

*"Always in quest of preachers with
a passion for souls"*



REV. ROY MUMAU
Chairman Church School

N
E
I

Congratulations to Seniors of '47

★ ★ ★

BEST WISHES TO OLIVET

Northeastern Indiana District

SUPERINTENDENT



REV. PAUL UPDIKE

N.Y.P.S. PRESIDENT



REV. H. E. PRIDDY

Portsmouth New Boston Church of the Nazarene

Rhodes Avenue at Center
New Boston, Ohio



REV. C. L. WOOTEN
Pastor



LORRAIN SPARKS
Student

"Congratulations to the Class of 1947"

CHURCH OF THE NAZARENE

South and Walnut Streets
WOOSTER, OHIO



Our New Church Building Soon to be
Completed

—♦—
"A MODERN CHURCH
THAT STANDS FOR
OLD FASHIONED SALVATION"
—♦—



ROSS W. HAYSLIP
Minister
214 W. South St.

Congratulations to the
Class of 1947

**ALWAYS
BOOSTING
O. N. C.**
EVANGELIST
C. T. CORBETT



CONGRATULATIONS
from
W. W. WEDDINGTON
Evangelist
1905 Chillicothe St.
PORTSMOUTH, OHIO

KANKAKEE COUNTY

YOUTH FOR CHRIST

Congratulates
the World's Largest Holiness College



OLIVET NAZARENE
COLLEGE

GREETINGS
TO THE STUDENTS
OF
OLIVET NAZARENE COLLEGE



REV. HARVEY S. GALLOWAY
District Superintendent

CENTRAL OHIO DISTRICT
and
CENTRAL OHIO DISTRICT
N. Y. P. S.



REV. W. F. CLAY
District N.Y.P.S. President

CHURCH SERVICES

Sunday School
9:45 A. M.

Worship Services
11:00 A. M.

6:30 P. M.—N.Y.P.S.
(Groups for all ages)
7:30 P. M.—Evangelistic

Prayer Services

9:00 A. M. Sunday
6:30 P. M. Sunday
7:30 P. M. Wednesday
7:30 P. M. Friday

THE DETROIT BIBLE TRAINING SCHOOL

Every Monday 7-10

Teachers—

Rev. A. L. Leach—Dear
Rev. Selden Dee Kelley
Rev. O. D. Faulkner
Rev. W. O. Welton
Mary Frances Euler
Robert and Madge Killion
Lois Williams



MADGE KILLION
Organist



ROBERT KILLION
Choir Director



IRENE MOTLEY
W.F.M.S. Pres.



LOUIS F. HALL
Sunday School
Superintendent

MISSIONARY MEETINGS

Monday night
Tuesday night
Thursday—all day

WOMEN'S FOREIGN MISSIONARY SOCIETY

Esther Carson Winans Chapter
Maude Chapman Chapter
Morrison Memorial Chapter
McKay Chapter
Evelyn Whitthoff Chapter
Junior Chapter
Juniorette Chapter
Home Missionary President Mrs. Arthur Gross

HOLINESS YOUTH CRUSADE ART INSTITUTE AUDITORIUM

First Saturday of each month
GREGOR EULER

H.Y.C. President, N.Y.P.S. President
Fellowship Group Junior Hi-N-Y
Seniors Juniors
Senior Hi-N-Y Juniorettes

Page 205



REV. W. W. MCGUIRE
District Superintendent

Michigan District

— Commends —

DR. VAN DUYN AND FACULTY

for

A Year of Outstanding Achievement

CONGRATULATIONS!

CLASS OF 1947

On Your Many Scholastic Accomplishments

"The path of the just is as the shining light, that shineth more and more unto the perfect day."—Prov. 4:18.



Rollins Grain and Lumber Company

A Good Place to Buy Lumber

Corner Court Street and East Avenue

Kankakee, Illinois

PHONE MAIN 3

*“The Foundation of Every State Is
The Education of Its Youth”*

DIOGENES

... and may the education and training you
have received at Olivet Nazarene College
be your foundation for a life of service to
state and nation.



GIFTS

TOYS

Kankakee Book Store

OFFICE SUPPLIES . . GREETING CARDS
DENNISON GOODS

229 EAST COURT STREET

KANKAKEE, ILLINOIS

HERTZ FUNERAL SERVICE

PRIVATE AMBULANCE

PHONE 41



COMPLETE REPAIR SERVICE



KANKAKEE, ILLINOIS

THE HOME OF



**Snowwhite Laundry
Company**

LAUNDRY AND CLEANER

430 S. Schuyler Phone 143
Kankakee, Illinois

WILKINS RADIO SERVICE

A Complete Line of
HOUSEHOLD ELECTRICAL APPLIANCES

CLAUDE O. WILKINS
Phone 4599

307 East Court St.
Kankakee, Illinois

GARDEN CRAFT FLORAL SHOP

FLOWERS - - ALL OCCASIONS

559 East Court Street
Main 246

Mrs. W. R. Palenskee

Kankakee, Ill.

ADELMAN'S

Shoes for the Family

135 SOUTH SCHUYLER AVENUE

X-RAY FITTED!

VANDERWATER'S

Store for Men



HART-SCHAFFNER AND MARX CLOTHING
NUNN-BUSCH SHOES DOBBS HATS
ENRO SHIRTS INTERWOVEN SOX

*Leading brands such as these
make our stock exclusive*

LASSERS FURNITURE CO.

KANKAKEE, ILLINOIS

-
-
- FURNITURE
 - FLOOR COVERINGS
 - APPLIANCES
-

Swannell Hardware, Inc.

Kankakee, Ill.

- Home Appliances
 - Hardware
 - Sport Goods
 - Paint

Kankakee's Leading Hardware Store

PLANT KERGER CO.

KANKAKEE, ILLINOIS



The Best Known Brands in MEN'S CLOTHING

- ARROW SHIRTS
- KUPPENHEIMER SUITS
- BOSTONIAN SHOES
- HOLEPROOF SOCKS
- MUNSINGWEAR

KANKAKEE MOTOR COACH COMPANY

LOCAL FARE

4 Adult Tokens 25c

Cash Fare 8c

End Parking Worries and Delays

"RIDE THE BUSES"

■ ■ ■

Phone 629 253 N. Schuyler Ave.
Kankakee, Illinois

Compliments
of

SEARS-ROEBUCK & CO.

McBROOM'S CAFE

A Good Place to Eat



153 North Schuyler Kankakee, Illinois

DOMESTIC SERVICES, INC.

Kankakee's Leading

LAUNDERER

and

CLEANER

Phone 900

196 N. DEARBORN AVE.

COMPLIMENTS

— OF —

RADIO DOCTORS
SUPPLY HOUSE

FABER FLORAL COMPANY

Florists to Kankakee for over 75 Years

STORE	GREENHOUSES
336 East Court Street	869 W. Jeffrey Street
Phone 696	Phone 1128

ARCADE SHOP

Arcade Bldg. . . Main 1359

SMART APPAREL FOR WOMEN

Corner Merchant and Schuyler
KANKAKEE, ILLINOIS

ROYAL BLUE

STORE

BOURBONNAIS, ILLINOIS

- GROCERIES
- MEATS
- FRUITS
- VEGETABLES

ARMAND LECUYER

Phone 1267

Diamonds . . . Watches

Silverware . . . Clocks

Set Rings

Costume Jewelry

Watch Repairing

When your watch stops
running bring it to us and
we will put it in first class
shape.

Huff and Wolf's

127 S. Schuyler

Phone 89

KANKAKEE, ILLINOIS

GRADE "A"

Meadow Gold Dairy Products

Beatrice Foods Co.

ICE CREAM DIV.

MILK DIV.

PHONE 152

PHONE 1600

Jaffe and Sons

MEN'S WEAR

Corner Court and Schuyler

Featuring All Brands
of

Nationally Advertised Brands

- Knox Hats
- Timely Clothes
- Crosby Square Shoes

H. H. Troup & Co.

Established 1852

- Lumber
- Millwork
- Building Materials

202 N. East Ave.

Phone 1400



THE COLLEGE BOOK STORE

Invites You to
BROWSE AND BUY

B. BURTON
MANAGER

New Boston Cafe

"THE BEST HEALTH INSURANCE"

is

"PURE FOOD"

It's The Taste That Tells

111 E. Court St.

Ph. 7375

COMPLIMENTS

— OF —

Bradley State and Savings Bank

205 W. Broadway

Phone 619

COMPLIMENTS OF

Bradley Department Store

423 W. Broadway

Phone 4600

COMPLIMENTS

OF

Longtin's.. Sporting Goods

435 W. Broadway

Phone 7039

MINER BUSINESS MACHINE COMPANY

EVERYTHING FOR THE OFFICE

Office & Sales Room
251 E. Oak St.

Ph. 1305

Thos. Baird & Son, Inc.

245 N. DEARBORN AVE.

Everything in Plumbing, Heating and Sheet Metal

EQUIPMENT AND SUPPLIES

R. J. CHAMBERLAIN MOTOR CO.

"DODGE AND PLYMOUTH"

Passenger Cars and Trucks
Dependable Used Cars

354 S. Schuyler Ave.—Ph. 5700

344 S. Schuyler Ave.—Ph. 580

KANKAKEE, ILLINOIS



SMITH-ALSOP PAINT STORE

THE PAINTERS' LINE SINCE 1909

253 East Court

PHONE 704

Tolson's

CLEANER SINCE 1886

Hats Cleaned and Blocked . . . Berlou Mothproofing

379 South Schuyler Avenue

C. C. ENGEL

H. L. RAMIEN



Marty, Jane and Doris, like many other Olivet students, enjoy meeting their friends at Kankakee's leading hotel.

Hotel Kankakee

CLOSE MOTOR SALES
AUTHORIZED PONTIAC DEALER
Station St. and Schuyler Ave.

Phone 356

THE ART FLORAL SHOP

168 E. Merchant Street
Toots Gagnier, Prop.
KANKAKEE, ILL.

"Flowers For All Occasions"

COMPLIMENTS
... OF ...
F. O. SAVOIE AND COMPANY
WHOLESALE GROCERS
KANKAKEE, ILLINOIS

COMPLIMENTS
OF
GRAVELINE'S
CASH AND CARRY MARKET

Featuring—

- Monarch Finer Foods
 - Wilson and Armour
Meat Products
-

OWNED AND OPERATED BY
DAN GRAVELINE
and
CATHRINE GRAVELINE

THE FRANKLIN PRESS COMPANY

Printers and Stationers

SCHOOL AND OFFICE SUPPLIES TYPEWRITERS
GREETING CARDS PARTY GOODS SELECT GIFTS

264 East Merchant Street

Kankakee, Illinois

COMPLIMENTS

OF

THE J. C. PENNEY CO.

THE
C-K-P JEWELERS

#

159 EAST COURT ST.

Phone 440

Kankakee, Illinois

Agatone Music Center

346 E. Court St.

MUSICAL INSTRUMENTS, SUPPLIES,
TOYS, and REPAIRS

HECHT'S

"For the Best"

HEADQUARTERS FOR JUNIOR AND
COLLEGE FASHIONS

171 South Schuyler
KANKAKEE, ILLINOIS



PRONGER'S ... Cafeteria ...

Serving Kankakee the Finest of
Foods. Offering a Delightful Place
to Entertain Your Visiting Friends.

**COMPLIMENTS
OF**

TURK

FURNITURE CO.

KANKAKEE, ILL.

CHRISTENSEN'S

THE SHOP THAT IS DIFFERENT

122 N. Schuyler Ave.
KANKAKEE, ILLINOIS

Jaffe Drug Store

UPTOWN
217 E. Court St.
PHONE 184 - 205

Prescriptions Soda Fountain
SUNDRIES

Kibbon's Appliance Store

175 N. Dearborn
KANKAKEE, ILLINOIS
PHONE 1275

EDWARD'S CREDIT JEWELERS

Headquarters
for
Nationally Advertised
Watches—Diamonds
Jewelry

278 E. Court

Main 1108

Keys Made While U Wait

L. F. RAICHE

SAFES—FOR MONEY AND RECORDS
SPORTING GOODS
OUTBOARD MOTORS BOATS

326 S. Schuyler
Phone: Day, 315; Night, 3156

Stetson Hats

Walkover Shoes

Lueth & Cooley

HOME OF SOCIETY BRAND CLOTHES

Skipper Sportswear

Wilson Shirts

Quality

Guaranteed

LOUIS Shoe Rebuilder

509 E. Court St.

SAMUELS

EVERYTHING FOR WOMEN

148 E. Court St.

COMPLIMENTS

. . . OF . . .

CHRISTIANSEN AUTO PARTS

151 E. Court St.

Phone 592

Liberty Laundry

73 Main Street

BOURBONNAIS

Yours For Service



Congratulations,
Class of "47"



Blinds that beautify and endure, for the home or commercial use. A product backed by years of experience.

Mackin Venetian Blind Company

BRADLEY, ILLINOIS

Lecour's

LADIES READY-TO-WEAR . . SHOES
MILLINERY AND ACCESSORIES

KANKAKEE, ILLINOIS

COMPLIMENTS OF
YOUR

OPTOMETRISTS

DR. RUSH HUFF
DR. RUSSELL ROGERS

163 N. Schuyler Ave.

Phone 940

T and R Supply

Commercial Refrigeration
For
Every Known Purpose

COMPLIMENTS

Kankakee Federal Savings and Loan Association

190 East Merchant St.
KANKAKEE, ILLINOIS

BOURBONNAIS CLEANERS

EXCELLENT CARE
BETTER WEAR

Pickup and Delivery

PHONE 6450


McBROOM'S DONUT HOUSE



Tops with everything!

Phone 6584

261 E. Oak St.



City National Bank

OF KANKAKEE

EDUCATION
IS THE APPRENTICESHIP
OF LIFE . . .



Wilmott

The city's leading bank for 57 years

1890 — 1947

MEMBER OF FEDERAL RESERVE
MEMBER OF FEDERAL DEPOSIT INSURANCE CORPORATION

The Nook



GOOD FUN
FOOD
FRIENDS

Mrs. R. C. Wellman, Manager

First Trust & Savings Bank OF KANKAKEE

- Commercial Accounts
- Savings Accounts
- Loans and Discounts
- Collection and Transfers
- Trust Department
- Real Estate Loans
- Safe Deposit Boxes

MEMBER FEDERAL DEPOSIT INSURANCE CORPORATION

COMPLIMENTS OF

Your Music Office and Bookstore

"What Everybody Is Singing About"

WENDELL H. ARNOLD
Manager

RUTH HARRIS
Bookkeeper

Mike and Ollies

*"Where there is Good Food
and lots of Fun"*

BOURBONNAIS

ILLINOIS

THANK YOU FOR YOUR
PATRONAGE
OF THE

ATHLETIC EQUIPMENT STORE
Olivet Gymnasium Office

PROF. JONES
Athletic Director

PARIS CAFE

DON PALMER, Prop.

"We Serve The
Best In Foods"

STEAKS — FRIED CHICKEN
— PORK CHOPS —
CHICKEN CHOP SUEY

KANKAKEE, ILLINOIS

COVER

Kingskraft

PHOTOGRAPHY

Blankenburg

PRINTING

Interstate Printing Company

ENGRAVING

G. R. Grubb & Company

and

Stafford Engraving Company





